

# THE CARD – Vol. 22, No. 7, Issue 249, June 2011

A Publication of the Lancaster County Postcard Club, Lancaster, PA

*Enjoying postcards through education and entertainment.*

**Picnic-Meeting: July 17, 2011. Mowrer's Home. Buy, Sell and Trade from 1 PM. Picnic Meal 4 PM.**

Yearly membership is \$10 (\$5 for each additional member at the same address.)

Membership chairman: Richard Pendergrast, 950 Willow Valley Lakes Dr., I-506, Willow Street, PA 17584.

Club website: [www.playle.com/clubs/lancaster](http://www.playle.com/clubs/lancaster) or Google search: Lancaster County Postcard Club.

**UNDER COST – You can buy our Vol. II book of local postcard views for just \$15. Give one to a friend.**

## JUNE MEETING

In attendance were 36 members including a guest or two. With set-ups happening as early as 4 PM there's plenty of shopping time for those so inclined. Set up and selling were Vince Peterson, Al Schaub, Ruth and Harold Moyer, Ray Dennis, Jim Ward, Aaron and Lynn Heckler, Dede Schaeffer and Bill Buckwalter. Table rental is \$3 so that's a pretty good deal, \$3 for 3 hours (if customers come early).

We need someone at the Club Table to greet guests and members, hand out Door Prize tickets, and have members sign the roster, a request by the Farm & Home Center. The new "someone" need not be present at 4 PM, but 5:30 to 6 PM would be a big help, and preferably someone who's not an avid PC buyer. Sharon will continue selling 50/50 tickets and take charge of the 10¢ boxes of cards.

Jere Greider, LCPC's Expo General Chairman, reported that plans for our **Annual Expo** are on schedule. He can use more volunteers to help set up tables and chairs the evening before, Friday, Aug. 19, from 6 to 7 PM. Volunteers are also needed to set up the exhibit easels at the same time as well to help bag poster board entries for those who wish to cover their exhibits. Jere also needs a few "sitters" at the lobby table during the show from 9 AM until 5 PM, to hand out souvenir programs, to sell our *Windows, Volume II*, and to answer questions about the club. Your help can be in 2 or 3 hour shifts - makes it easy for *everyone*, if *everyone* offers to help! Contact Jere at 717-285-5872. Jere also reminds us to put our yellow Expo PC on bulletin boards where available in grocery, hardware and other stores. If the card disappears, replace it, since someone took the first one as a reminder.

Dick Pendergrast reported that he and Tom Beck answered a call for a program about postcards to 15-20 Elizabethtown Seniors. By-passing a problematic projector, Dick proceeded with his section of the program and Tom followed on a PowerPoint. They were treated to a luncheon. Jim Ward reported that our club's third president, **Dot Fry** is quite alert and ready for company at anytime. She's at Fairmount Homes, between Ephrata and Farmersville. She doesn't use the phone but it's OK to stop without calling. Besides her general welfare, Jim was tweaking her 96-year old grey cells for information about the village of Clay, subject for a future story in *The Card*.

A previously announced **amendment to the club's by-laws** resulted in a near-unanimous vote. In essence, the Board of Directors may expend money less than \$100 without the consent of the membership. It's understood the Board will then report these expenditures to the club. Also, following a protracted discussion (from the May meeting), the members in attendance voted to **continue meeting in the same room we've used for years** rather than a second choice off the F&H Center lobby where we gathered for two recent meetings at the Center's request due to a double-booking.

## Program

Members were entertained with a second round of Columbia and Susquehanna River PCs by **Bud Heim** for which we thank him for his efforts and for Jere Greider's assistance with the Elmo projector.

## JULY MEETING

**Sunday, July 17th**

It will be their first club picnic at **Barabra and Walter Mowrer's home**, so let's thank them for their hospitality with a good turnout. They welcome us to their recently built home at **4614 Marietta Avenue**, Columbia, PA. Phone 717-684-5331. The Columbia address is a bit deceiving. Their home, with a beautiful setting, is just east of Marietta. You can reach it easily by taking Route #30 to the #441 Exit; go north over Chickies Rock to #23 (Marietta Pike), then east to their home. For a leisurely trip from Lancaster, pick up #23 West, Marietta Avenue. Continue until you see the Village of Florinel\* sign, then look for their home on the left (south) side.

### Rain or Shine!

You're welcome any time after 1 PM. Bring cards or albums of postcards you like to show around. You may wish to bring a small table to set up to sell if you wish. In any case, bring your own chair and a covered dish (hot or cold) for the picnic meal which will commence at 4 PM. LCPC will provide beverages and paper place settings as it has always done in the past. There is no planned program.

\*Bring along all of your Florinel postcards. Any member with more than five (5) PCs gets an amazing prize!!

## June Exhibit Competition

Nine entries were something of a surprise for the subject of **Weddings**. It's not an easy subject to find on postcards. As you might suspect, several members resorted to comics and others to real photos – all very acceptable! It was a single card, so that helped in the search. Here are the results –

<b>FIRST</b>	Jim Ward	Life's Little Tragedies
<b>SECOND</b>	Dick Pendergrast	Doggie Bride and Groom
<b>THIRD</b>	Don Tribit	Heartiest Congratulations

### Honorable Mentions (all near-identical votes)

Jere Greider	Bride
Walt Mowrer	The Wedding
Harold Moyer	Wedding – 6/24/29
Ruth Moyer	I was Waiting
Sandra Shaub	Fri. the 13 <sup>th</sup>
Gisela Withers	Oh, Happy Day!

Congratulations to all winners. It's too bad we always seem so rushed after a program, and we don't take a few minutes to ask members about their entries. It could be a learning experience.

**July's subject is National Parks (a board)**. Gisela reminds us that the parks can be anywhere in the world!

There will be no meeting in August but it's time to work on your boards for the Expo. Categories are:

**Holidays, Children, Transportation, and Vacation Spots.**



# Mount Hope

When Harold Moyer and Jim Ward start out on a postcarding adventure, they're generally familiar with the territory - at least to a degree. In the case of Mount Hope this wasn't the case. Only a 10-minute conversation with Harold Galebach (the Squire of Penryn) would give them some solace.

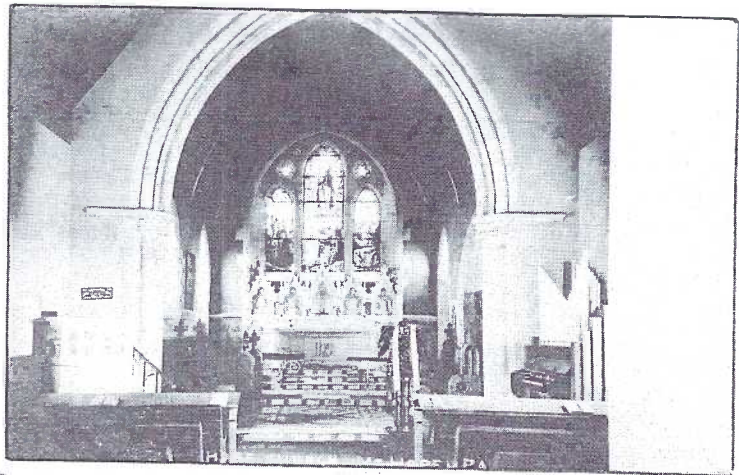
## Church, Depot and Charcoal

The Protestant Episcopal Church was an easy find - at the corner of Mountain Rd. and Mt. Hope Rd. An addition has been made and the churchyard expanded, but not as much as a view Jim had marked "Mount Hope Cemetery." So we're calling that another locale. (Even that church has a different profile.) We didn't get to see the interior of the church labeled "Hope Church, Mr. Hope, Pa." but reckon there is little change.

The Railway Station was barely more than 200 ft. north of the church, on Mt. Hope Rd. And now, we'll turn our story over to the Squire of Penryn, Harold Galebach, LCPC #273. "The Cornwall & Mt. Hope RR was completed in 1884. At this point it met the Reading & Columbia RR which was extended from Manheim through White Oak. Passenger train service between Manheim & Lebanon ended on Jan. 23, 1929. Freight service from Lebanon ended before 1974, but continued from Manheim for several more years and now ends at the Ferrel Gas Co. outside Manheim in Penn Twp.

the RP view of a "Charcoal Burner's Hut, Mt. Hope, Pa." Where it was, and still might be under years of growth - or under the Turnpike, is anybody's guess.

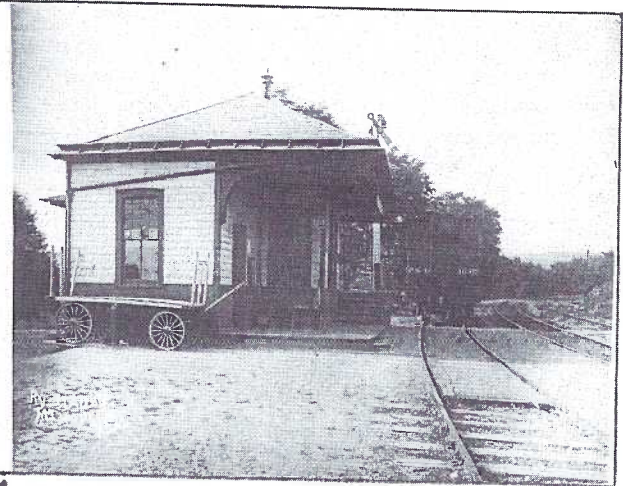
On Oct. 31, 1886 it was merged with the Cornwall RR. The station at Mt. Hope was abandoned in 1947. On Aug. 26, 1964, the 6.4 mile line from Cornwall was abandoned and the RR Bridge over the PA Turnpike was removed. Penryn Park (it spread across the Lancaster-Lebanon county line) was served by Excursion Trains from Lebanon, Lancaster, Reading and other cities for church groups, employee picnics, and lodge groups. According to *Railroads of Lebanon County*, 'The Cornwall Railroad hauled more than 5,000,000 passengers during its approximately 46 years of existence'. Thanks so much, Harold for this information.



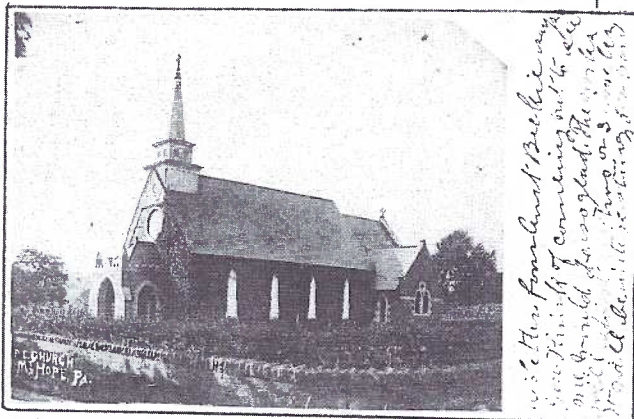
**Hope Church, Mt. Hope, Pa.**



**Mount Hope Cemetery (But not Lancaster County)**



**Ry. Station, Mt. Hope, Pa.**

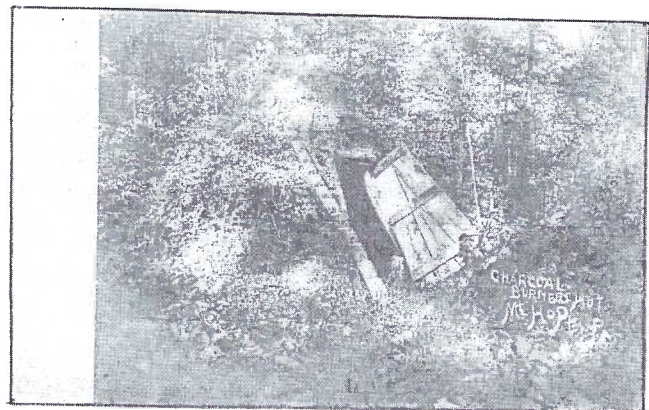


**Episcopal Church view**

Message side of card - Dear Bro. There is a depot about 1/2 mile from the town. You can leave Hbg. at 6:10 AM on Reading RR for Lebanon, change there I think for the Lebanon and Cornwall. I am not sure. There is a close connection for Mt. Hope. Arrive here at 7:30 AM. Can go back in the evening.

Let me know when you come and I will meet you at depot.

Ida. Am well.



**Charcoal Burner's Hut, Mt. Hope, Pa. Caption lettering for this card, the church and the RR depot are alike.**

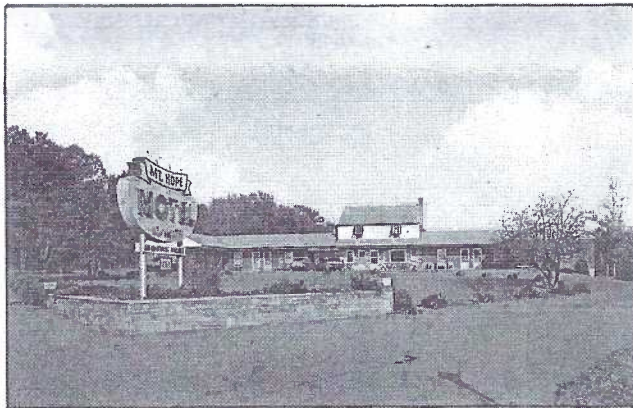
Where it was, and still might be under years of growth - or under the Turnpike, is anybody's guess.



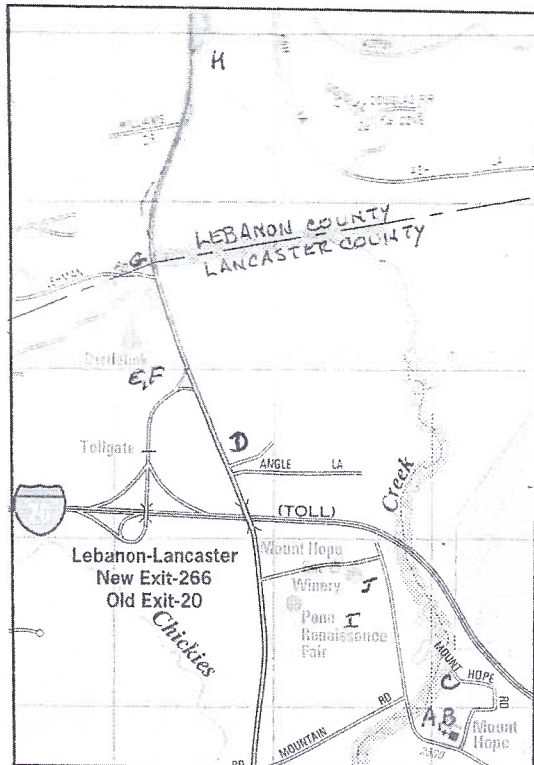
### Motel and Springs

West of Mt. Hope is the well-traveled Manheim Pike (Rte. #72). South of the Lebanon-Lancaster Exit on the east side of #72, the Mt. Hope Motel hosted thousands of travelers over the years. Our view, #84900B, is a photo by Jim Hess, printed by Dexter, and is likely from the 1960s. The Daniel Wert family offered a "Christian Home Atmosphere." The address on the postcard is R.D. #3, Manheim.

Just north, but on the west side of #72 within spitting distance of the Turnpike, is a stone drive. Harold and Jim ventured past Wissahicken Water Co. signs (the place was disserted) and proceeded to an expanded area next to the water company's warehouse. This, according to Harold Galebach, had been Tshudy's Water Company and before that the Hiawatha Spring Water Company. This we have on a RP card published by Ensminger of Manheim, as well as an advertising PC printed by Lititz Print Company.



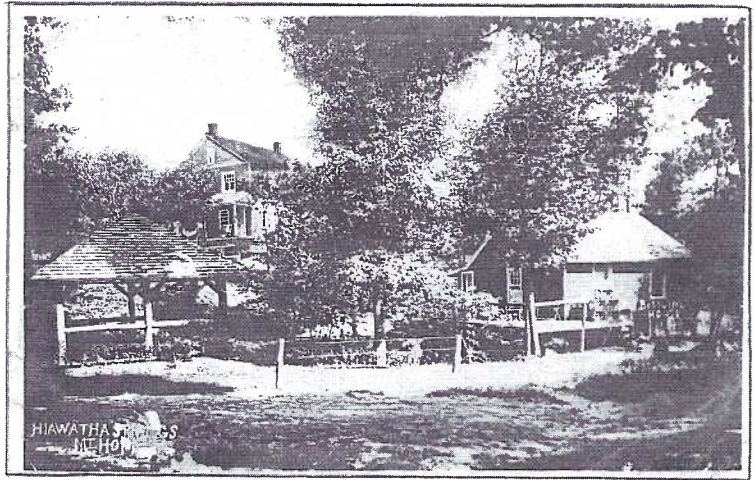
D Mt. Hope Motel



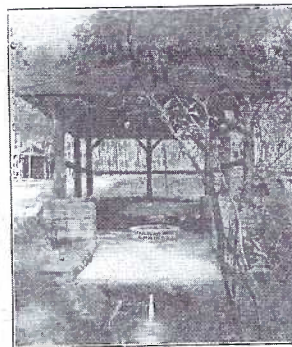
### Future Shows

**July 16** Allentown Antique Advertising and Paper Show,  
Allentown Fairgrounds,

**August 20 LCPC ANNUAL EXPO** Where we meet  
every month - Farm and Home Center.



E Hiawatha Springs, Mt. Hope, Pa.



Hiawatha Springs

DRINK

### Hiawatha Spring Water

Proved the purest by analysis  
Endorsed by leading physicians  
Bottled and sealed at the Springs  
Analysis sent on application

Hiawatha Spring Water Co.

Mount Hope, Pa.

F

### Hotel and Inn

Farther north, still on the west side of Rte. #72, is a very old stone hotel now called the Farmer's Hope Inn. Tim and Terri Brown are the present owners. Our PC calls it Mountain House, Mt. Hope, Pa with W. F. Hull, proprietor. The reverse uses the message area to advertise Wm. Hull's Hotel with "beer license and gas and oil station, R. 3, Manheim, Pa." He offers home sites for sale "in the timber. Save big tax. On easy terms, Look them over." Hull (or someone) has inked next to the hotel name "For Sale or Exchange." If you'd like an exact location, Tim told Jim "if your pick-up's in the parking lot, it's in Lancaster County and the hotel is (now) in Lebanon County."

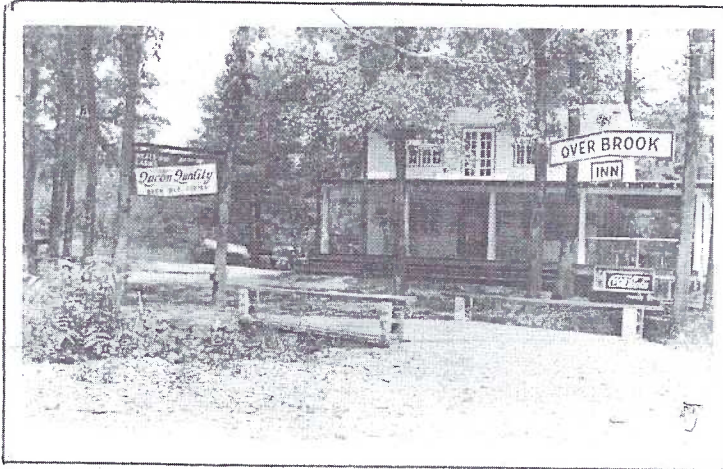


G Mountain House, Mt. Hope, Pa. - W. F. Hull, Prop.

Continued on next page.



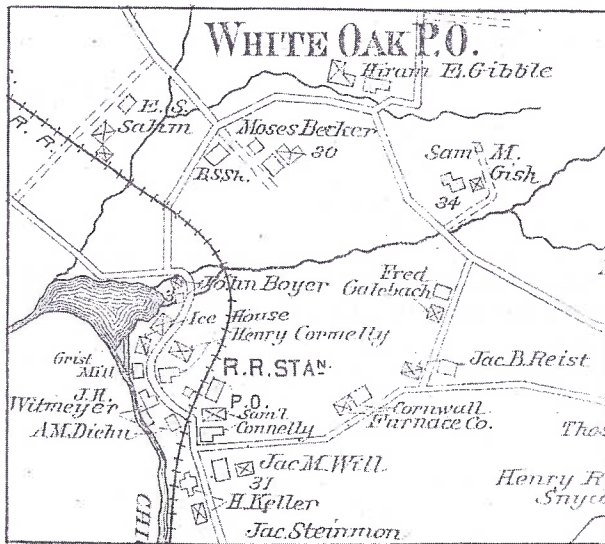
Not too much farther north, now on the east side of Rte. #72, is Appalachian Trailer Sales (opposite the Mt. Gretna Springs Retirement Homes). Much has been altered on the building, but you can see the original outline of Overbrook Inn, as seen on the RP view described as being on "Route 72, Lanc. & Leb. Hwy." In addition to a large Coca Cola sign on the card, you can see "Deppen's Queen Quality Beer, Ale, Porter" as well as "Meals, Cabins and Drive-In." (So we've fudged a bit to include a Lebanon PC in our story.)



H Overbrook Inn, Route 72, Lanc. - Leb. Hwy.

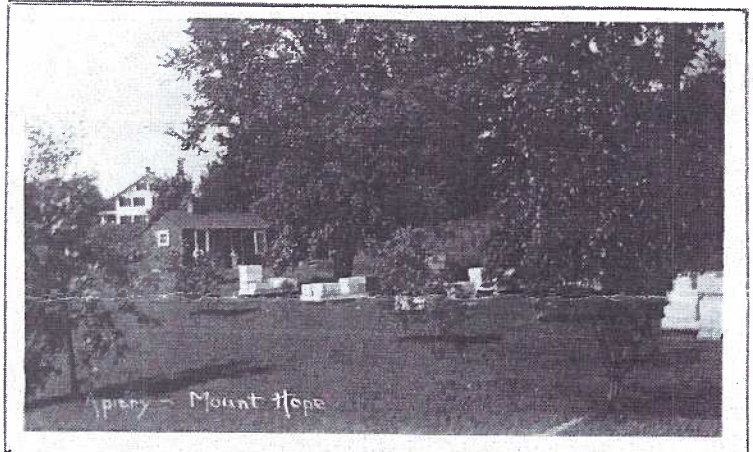
## White Oak

Rounding out their Mt. Hope area journey, Harold Moyer and Jim meandered south from Mt. Hope generally following the route of the old Lancaster-Lebanon Railroad that connected Mount Hope to Manheim. Where the now abandoned RR crossed Newport Road was the bustling little village of White Oak. The single PC we have (printed by Lititz Print Co.) shows the major portion of White Oak. The photographer stood on the railroad bank and looked north (see dot on 1899 map). He was able to include Aaron M. Diehm's\* Hotel, right foreground, the Jerry Witmeyer farm on the left, and between the barn and hotel, the old stone mill. Our card was mailed from White Oak in 1908 so it shows the old mill before it was destroyed by a fire in 1925 when a steam engine in the adjacent saw mill exploded. A home still sits across from the site of the old mill with a date stone of 1765 and the name Johannes Stauffer. Township records show Jacob Stauffer was a mill owner in 1758. He was possibly the original settler of the area. Note the railroad ties, lower right corner. \*Diehm's name is misspelled on the map.



## Apiary, Faire and Winery

Another "Where's It?" subject is "Apiary, Mount Hope." Harold G.'s guess is that the handsome home setting on a hill, with its out-buildings and bee hives, might be in the neighborhood of the Renaissance Faire. We'll end this excursion to the Mt. Hope area then, with a knight charging on his steed, as seen at the annual Faire each summer, along with a PC sketch done by Jos. A. Galantino. of the Mount Hope Estate and Winery, a half mile south of Exit #20 of the PA Turnpike.



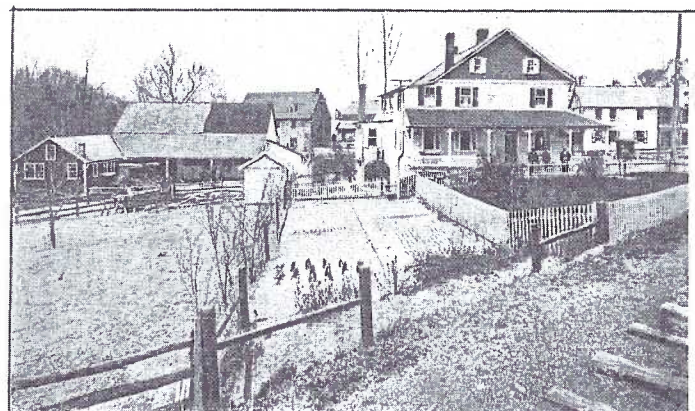
Apiary - Mount Hope



I A charging knight on his steed at the Renaissance Faire.



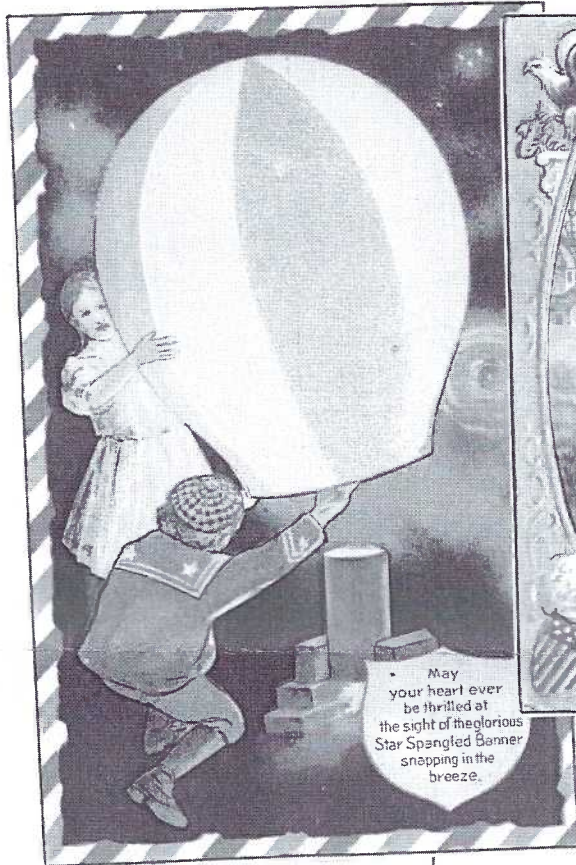
J Mount Hope Estate and Winery.



White Oak Hotel, Aaron M. Diehm, Proprietor. Opposite P. & R. R. R. Depot, White Oak, Pa. First Class Accommodations. Reasonable Rates. All Conveniences. Stock Yards Connected

White Oak Hotel, Aaron M. Diehm, Proprietor. Opposite the P. & R. R.R. (Philadelphia & Reading Railroad).





## Old Time Fourth of Julys

You have to wonder if our July Fourth celebrations these days are as much fun as they were 100 years ago. These kids seem to be enjoying the day just fine including artist Gene Carr's nearly toothless, slightly battered boy in the center on Rotograph card #219/5.

**Top row, left to right** – from Langsdorf's Fourth of July Series #2, "May your heart ever be thrilled at the sight of the glorious Star Spangled Banner snapping in the breeze." Two cards from Nash's Fourth of July Series #3 with silver background.

**Bottom row, left to right** – International Art card #51668 with art of Cyrus Durand Chapman. This particular card has a printed ad in the message column "Compliments of The Pennsylvania Trust Co., 536 Penn St., Reading, PA." Rotograph PC (see above), and finally a unique July Fourth scene by C. Bunnell on a card by Paul Finkenrath of Berlin.



## Bethany Home Postcards

Coming across postcards of Berks County is not unusual since it's our next-door neighbor to the northeast and collectible views of Berks will often include some of the Bethany Children's Home at Womelsdorf. Among those you'll find of the Home are dozens of the buildings that house the children and staff.

By far the most popular views however, are those of the children, at work and at play. In this and succeeding issues of *The Card* we'll show you views from Harold and Ruth Moyer's and Jim Ward's collections. These are certainly not *all* that were published, so LCPC members are urged to submit views we've not shown.

Seldom are the publishers identified, so we'll also include the reverse "Post Card" logo to help ID each group.

To be continued.

## POST CARD

PLACE  
STAMP

Bethany Harvesting

The Bean Pickers

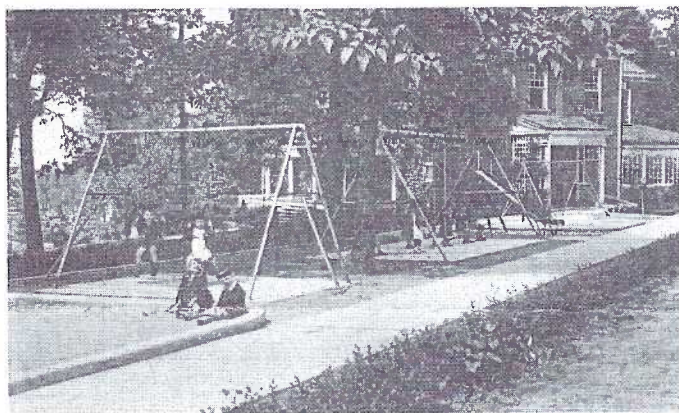
The Frick Cottagers and Their Sand Box in the Jubilee Year

The Sewing Class in the Jubilee Year

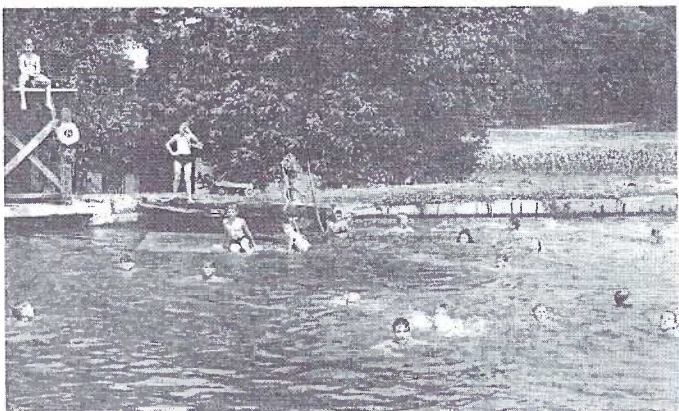
## POST CARD



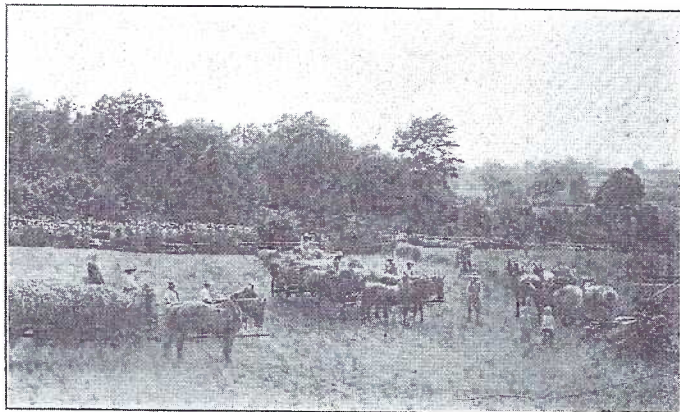
Leinbach-Frick Playground  
Swimming Hole



Leinbach-Frick Playground  
BETHANY ORPHANS' HOME, WOMELSDORF, PA.



Swimming Hole  
BETHANY ORPHANS' HOME, WOMELSDORF, PA.



BETHANY HARVESTING—BETHANY ORPHANS' HOME, WOMELSDORF, PA.



THE BEAN PICKERS—BETHANY ORPHANS' HOME, WOMELSDORF, PA.



THE FRICK COTTAGERS AND THEIR SAND BOX IN THE JUBILEE YEAR



THE SEWING CLASS IN THE JUBILEE YEAR