

THE CARD - Vol. 20, No. 11. Issue 239. November 2009.

Monthly Publication of the Lancaster County Postcard Club, Lancaster, PA.

Enjoying postcards through education and entertainment.

Next Meeting: Nov. 16, 2009. Farm & Home Center. Buy, Sell Trade from 4:30. Meeting - 7:00 pm.

Yearly membership is \$10 (\$5 for each additional member at the same address.)

Membership chairman: Richard Pendergrast, 950 Willow Valley Lakes Dr., I-506, Willow Street, PA 17584.

LCPC c/o 2009 Editor: Jim Ward 1795 Kleinfeltersville Rd. Stevens, PA 17578-9669

Club website: www.playle.com/clubs/lancaster or Google search: Lancaster County Postcard Club

October Program Follow Up

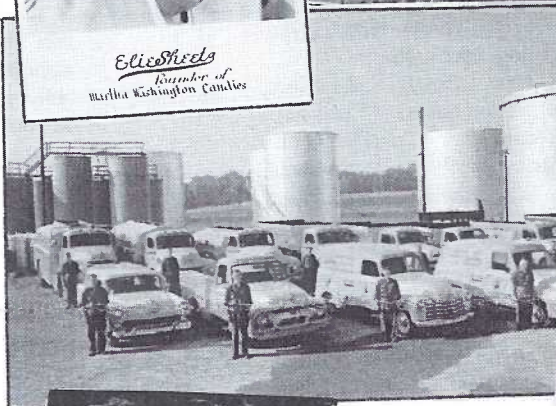
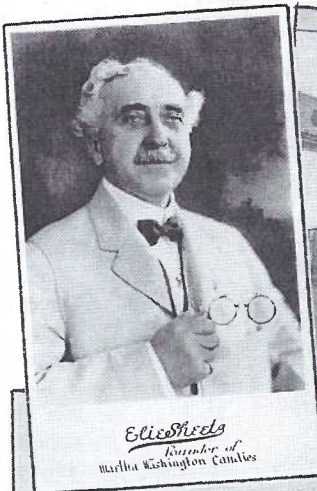
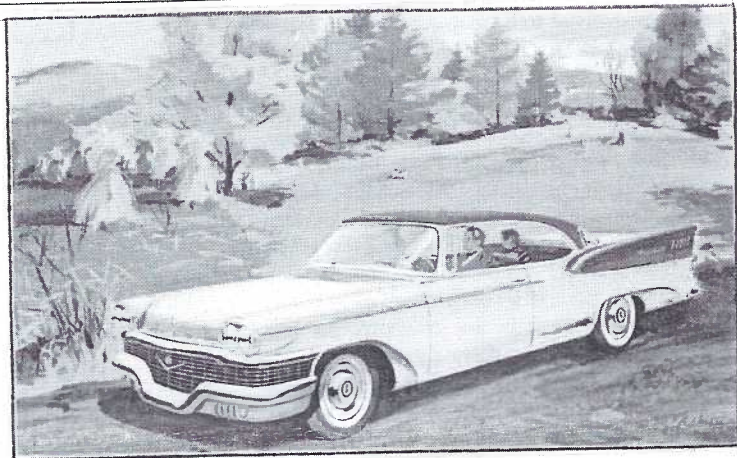
Part IV of **Lancaster Businesses That Used Postcards** by Jim Ward was met with some success. Jim asked for and received participation from members on a number of PCs but the one that received the most attention was the Studebaker President Starlight (shown) on a Packard Lancaster Co. card mailed May 1958. Auto aficionados including Bill Seigford weren't convinced it was a Studebaker. With a magnifier, Bill was able to see the Packard logo on the grill. He and others (sorry I didn't record your names) knew there was a company take-over during that era.

A compressed Wiki story reads like this - The Studebaker-Packard Corp. was the entity created by the purchase of Studebaker by Packard in 1954. Packard's balance sheet was good; Studebaker's dealership was larger. There was even a deal to merge with Nash and Hudson to form American Motors Corp. but that fell through. By 1956 S-P sales had dropped so that by 1957 and 58 the Packards were Studebaker-Presidents with "large amounts of bright work." The last auto rolled off the assembly line in July 1958.

November Program

With the illness of the Blanche Nevin impersonator (intended for November's program), Jim Ward offered to relieve Pres. Dede of an unnecessary headache by filling in with his presentation of **Lancaster Businesses That Used Postcards - Part V**. He will continue from Frank A. Reiker to Zook's Jewelry Store.

We show several samples of the cards to be shown with the Elmo/PowerPoint System.



October Meeting

Great fall weather brought us all together, with an attendance of 58 (minus the few who come to buy and then leave early). Speaking of which, though LCPC rents the room from 6 to 9, the Farm & Home Center has been lenient about us arriving a bit early. It started at 5:30 and has evolved to 5, then 4:30 and in recent months early bird set-ups have been just after 4. It remains to be seen if F&H continues to allow this.

Set up and selling by 6 pm were Ray Dennis, Kelly Fasnacht, Aaron Heckler, Karl Hellman, Bob Kramer, Mike Middleton, Walter Mowrer, Ruth Moyer, Vincent Peterson, Dede Schaeffer, Al Schaub, Marie Schurz, Dale Shaub, and Jim Ward. Whoa! Fourteen sellers. Aside from our Free-for-All, that's a record!

Carol Dennis was the substitute librarian for Jan Weitzel. The club's library has been active of late.

Carol and Sharon Gromis are co-chairs for our social events. The Christmas party details will be included in the December CARD. At this point we can report it will be on Dec. 21 (meeting night) at 6 pm. At the November meeting there will be a Sign-Up Sheet. Please think ahead and let the committee know then.

The 50/20 (\$24.50) was won by V-P Doug Miliken; due to a lack of LCPC Credit Cards (who's hoarding them?) an array of door prizes went to Steve Mummert (a Glass Wizard kit), Elmer Fry (Fix It & Forget It cookbook), Bob Kramer (3 Halloween repro PCs) and Gisela Withers (a DVD of the new TMI generator traveling along the Susquehanna recorded and donated by Bud Heim).

Monthly Card Competition

We saw the debut of what could prove to be a successful successor to the 8 ft. easel we used in the past. It took time and effort to erect and dissemble that and there was a lack of volunteers. Gisela Withers created giant board backings, complete with clips and sandbags, that sit on chairs. Thanks, Gisela. Now maybe we can have board competition more often.

To the subject at hand – SPORTS. As might be expected, RP cards claimed top honors (#1 and #2).

First	Brian Frankhouser	Local Baseball
Second	Walter Mowrer	Baseball
Third	Jim Ward	Invitation to the Hunt

Honorable Mentions

Susan Glass	Cats at Play
Harold Moyer	Take Me Out to the Ballgame
Ruth Moyer	Football Season
Gisela Withers	Olympic Sports

Thanks to all for your time and effort. November's topic (single card) is **Smiles/Laughter** and we'll round out 2009 in December with **New Years Greetings** (also a single card).

Postcard Postage Rates

for the last 135+ years – clues to help in dating PCs when the cancellation is not decipherable.

1¢ May 1873	12¢ Mar. 1981
2¢ Nov. 1917	13¢ Nov. 1981
1¢* July 1919	14¢ Feb. 1985
2¢ Jan. 1952	15¢ Apr. 1988
3¢ Aug. 1958	19¢ Feb. 1991
4¢ Jan. 1963	20¢ Jan. 1995
5¢ Jan. 1968	21¢ July 2001
6¢ May 1971	23¢ June 2002
8¢ Mar. 1974	24¢ Jan. 2006
7¢* Sep. 1975	26¢ May 2007
9¢ Dec. 1975	27¢ May 2008
10¢ May 1978	28¢ May 2009

*These price rollbacks are not typo errors. Remember, too, the denomination of the stamp tells you when the card was mailed, not necessarily when the card was published since some people use old postcards for current mailings.

Future Shows

Nov. 20-21 York International Postcard Show York Fairgrounds. 9 to 7 and 9 to 5. \$5 adm. for 2 days.

Nov. 27-28 34th Morlatton Postcard Show, Farm & Home Center, Lancaster. 10 to 6 and 10 to 4. \$2 adm. for 2 days. (See paid ad on Page 6.)

Now for the Bad News, or the Sad News.

In December, LCPC will be ending 20 enjoyable years of card collecting for fans from near and far. And is this to be where it all ends?

Do you know some of our members make the meetings, on a regular basis, and travel 125 miles to do so? How far do you travel?

Do you know some members get here as early as 5 pm to take care of club business – and leave after 9 pm?

When do you stroll in – sit on your hands – and leave?

Do you know some members have been volunteering for the same jobs for five, ten, fifteen yrs? When is the last time you volunteered to do anything for LCPC?

Here's what must be done if LCPC is to survive.

We must have someone step forward to be vice president. That job entails taking charge of the programs (most of which have already been filled for 2010). You are to contact F&H Center on the room set-up a week early (F&H does the work), and have necessary equipment (in our storage cage) in the room. The VP subs for the president which rarely occurs.

Three members have volunteered to be Directors. Directors meet quarterly (or nearly so) and keep the wheels of the club running smoothly. Three are elected for alternate 2-year terms.

We need someone to edit *The Card* for 2010 a job that should not fall to the President. It's our understanding that several stories are on tap, but more are welcomed – a few short paragraphs, or several pages, as you're inclined. (Jim has done it for 17 of the club's 20 years. That's enough.) Step forward!

Initial steps have been taken for a *20-Year History of LCPC*. Facts have been gleaned from the minutes (the tough work is done) by Dick Pendergrast, Shirley Summers, Gisela Withers, and Gwyn Fulmer under a dozen subjects, each of which can be written as a short page, such as Expos, Picnics and Parties, NPW Cards, Club Locations, Officers and Directors (done), Competition Subjects, etc. Jim began this project. Some one else is welcomed to take it over. There are 100's of photos taken by Mary Darrenkamp, Earl Carver, Barb Mowrer and Jim Ward to accompany the text.

One or two members are needed conduct the monthly card competition. Ruth Moyer ably handled the job for many years following Dot Fry's tenure in the earliest years of the club. Gisela and Jim need replacements. A list of subjects (being solicited at meetings right now) will be posted in *The Card*. Ballots are counted; winners announced and award cards (already printed) are filled in and given at the next meeting or mailed with the next issue of *The Card* along with the cash prizes. The 3-sectioned board now in use will be donated to the club at the December meeting.

Here's your chance to keep our club energized and successful. Don't just think about it. Do it! Please.

An Alphabetical Sampling of Postcard Artists

By Dede Schaeffer

Clarence Underwood was an illustrator and painter born in Jamestown, NY in 1879. He studied art both in the United States and Paris. His work included illustrations for books, magazines, calendars and postcards depicting ladies by themselves or in romantic scenes. He died in 1929.



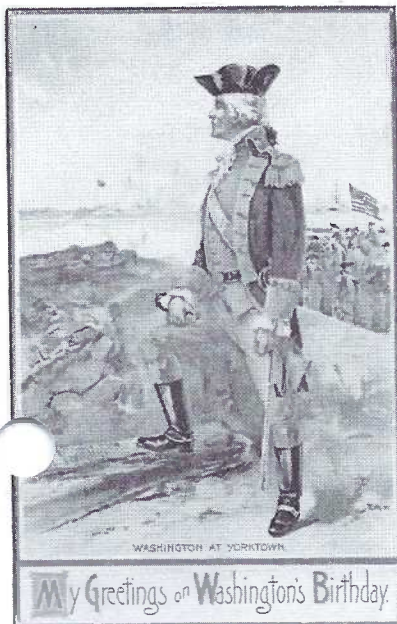
A PROBLEM OF TROUBLE

"Goliwogg" taken to prison.



*Wishing you a Merry Xmas
& A Happy New Year*

Florence Upton was born in New York in 1873. She came from English parents and visited there many times. She did not like America and longed for England. When her father died suddenly, she turned to illustrating. She illustrated a book with two Dutch dolls, but needed a main character. From her childhood she was reminded of the black cloth doll that she loved. This started the series of books written by her mother and illustrated by Florence. They were very successful and thirteen were published. Tuck saw the books and contracted for 17 sets of six cards each plus various greeting cards and paper toys. She passed away in 1922.



WASHINGTON AT YORKTOWN

My Greetings on Washington's Birthday

Richard Veenfliet was born in Germany in 1843. His family moved to New York in 1849. He worked for the S. Garr, Detroit, and International Art publishing companies. He portrayed patriotic scenes and did series of greetings and the US Presidents. Veenfliet died in 1922.



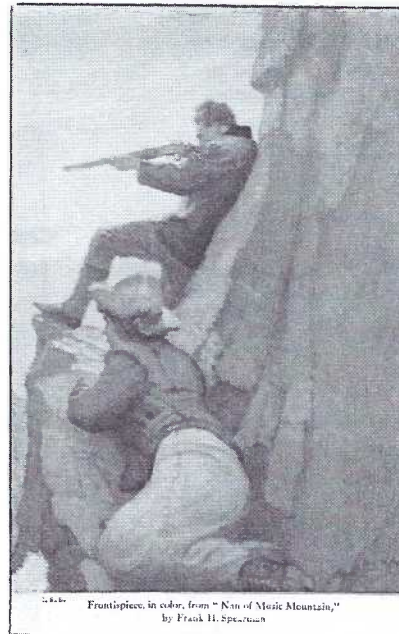
Louis Wain

Louis Wain was a noted and gifted cat artist, born in England in 1860. He had five sisters. Soon after marrying, his wife became ill. He amused her with drawings of a cat named Peter. (These eventually brought him both fame and fortune, enough so he was able to support his sisters as well as his family.) His wife died three years later. He continued to draw, illustrating books, comic strips, greeting cards, paper toys, calendars, and postcards, working with at least 30 companies. After being declared insane in 1924 he was taken to the asylum at Tooting. Sadly, he died in poverty in 1939. There is so much more to be said of his wonderful art works. Many books have been written about him, but our space here is limited.

Alan Wright was another English artist, born in 1864, surrounded by books. His father was a publisher, printer, and book seller. He was sent to boarding school and his holidays influenced his love of art with rural settings, love of nature, and animals in the wild. He married Anne Anderson in 1912 (see Jan. CARD) and collaborated on many books with her. His illustrations were published as postcards. The two of them were very successful but lived a modest eco-friendly and self-sufficient life with Alan passing away in 1959.



The Bunnykins keep their chimneys swept clean.
Keep your heart open, your thoughts bright and keen.
S.H.



Frontispiece, in color, from "Son of Mount Main,"
by Frank H. Spearman

Newell Convers (N. C.) Wyeth, born in 1882, was the founding father of the great Wyeth-Brandywine dynasty. He was born in Mass. but studied from 1902 to 1911 under Howard Pyle (Aug. CARD). He created over 3,000 illustrations appearing as ads, books, magazines, posters, and postcards. In his lifetime he was better known than his son, Andrew, and in my personal opinion, N. C.'s work is more vibrant and commanding of respect than his son Andrew's. This is documented by paintings and murals in numerous public buildings. N. C. died in 1945 along with his 4-year old grandson when his car, stuck on railroad tracks, was struck by a train.

Anna and John

By Jim Ward

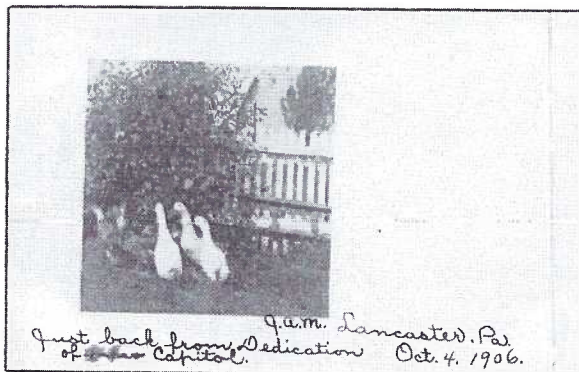
With immense help from
Anne Steinberg.

Anna Wade's grandparents settled in Eden Twp. in the early 1800's, raising ten children including her father, Harry. Sometime prior to Mar.30, 1907, Anna Wade met John A. Myers. She later married "The Squire" as he was known in the community. Some of us knew his son, Bruce, who had a wagon museum on the Lincoln Hwy. and later The Ponderosa Museum on Route #222 north of Quarryville.

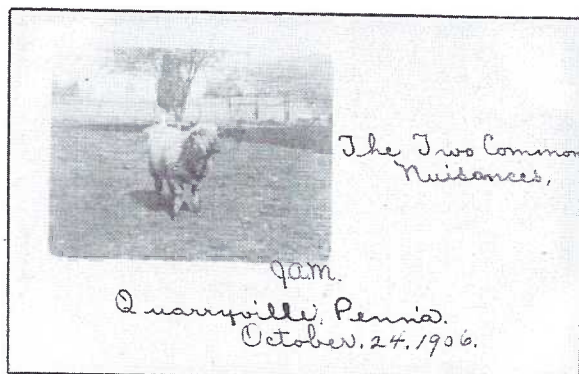
A few years ago a raft of PCs showed up neatly initialed "J.A.M." JAM's neat penmanship, the variety of postcard images, and the similar addressees all caught my eye. JAM (John A. Myers) merely initialed his cards, allowing most of the images to speak for themselves. Those dated from July 4, 1905 to Oct. 4, 1906 are sent to Harry Wade. Also on Oct. 4, and for the next several years, cards are addressed to his daughter, Anna, John's future wife as well as to her father. The 50+ cards I have (there are no doubt more) are dated from July 1905 to August 1910.

Views in the summer of 1905 are of Elmira, Corning, and Owego, NY as well as Niagara Falls, Ontario. The 1906 cards are of Phila, Reading, and Camden, NJ. Intermixed are real photos of domestic animals, Anna and local views. A few 1910 PCs are of Allentown and Harrisburg.

Included here are nine postcards mailed between John and Anna along with a Christmas card from Anna.



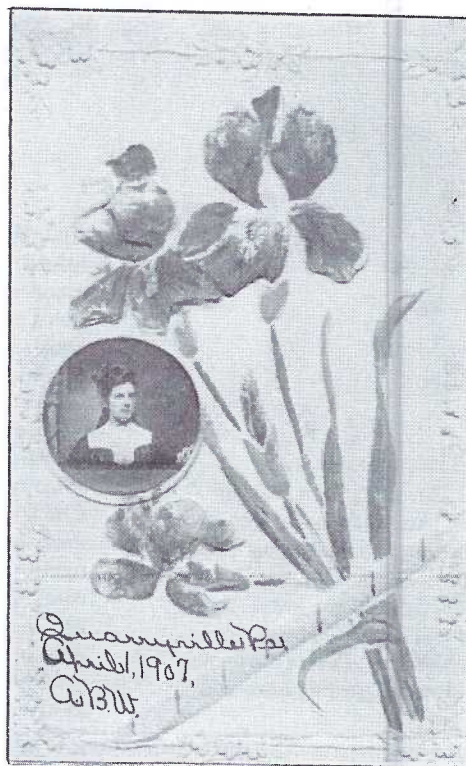
To Anna, Oct. 4, 1906 – A RP of a half dozen geese with the historic note "Just back from Dedication of the Capitol." That would have been the new building in Harrisburg.



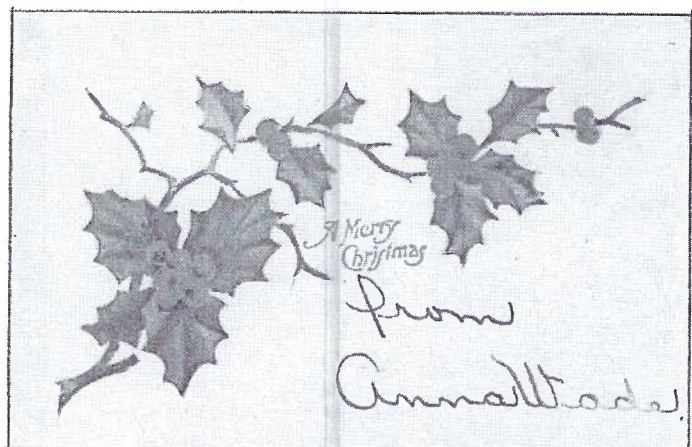
To Anna, Oct. 24, 1906 – "The Two Common Nuisances." (A white goose can barely be seen behind the cooperative sheep).



To John from A.B.W. (Anna B. Wade) - A real photo PC of Anna on which she pens "Phila, May 30, '06." It's mailed from Quarryville on Mar. 12, 1907. Note Anna's left-sloping (left-handed?) penmanship. Is there any doubt they learned their good penmanship at the same school – from the same teacher?

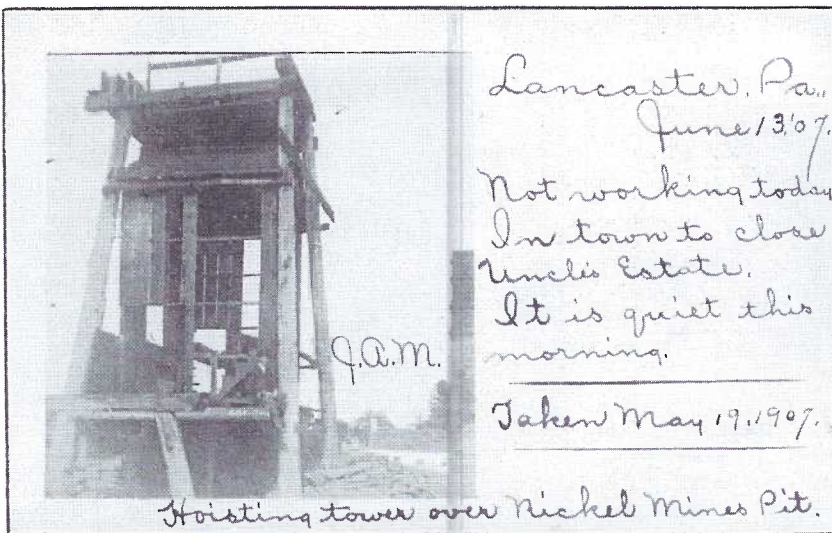


A month later, on April 1907, Anna sends John an embossed floral with her photo inserted. Her cryptic message, "If you get the P—, the beginning of this week, send it to me."



Anna and John

Continued

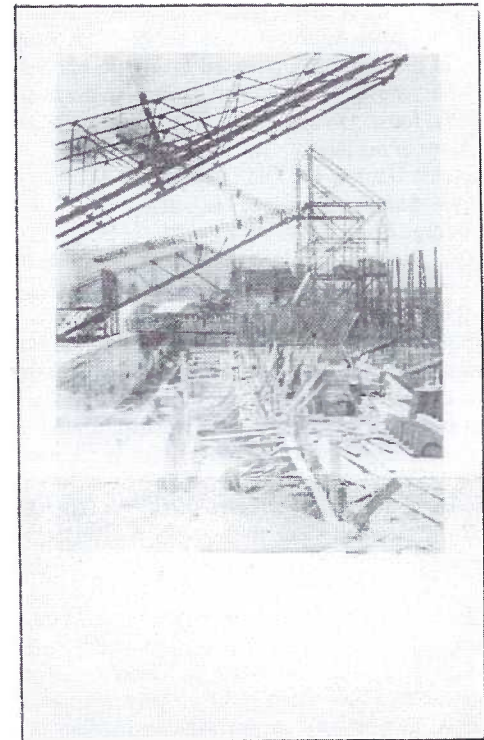


On June 13, 1907 John sent this historically valuable real photo postcard, "Taken May 19, 1907 - Hoisting tower over Nickel Mines Pit." By comparison, the remainder of his message is of little value to history buffs, "Not working today. In town [Lancaster] to close Uncle's Estate. It is quiet this morning."

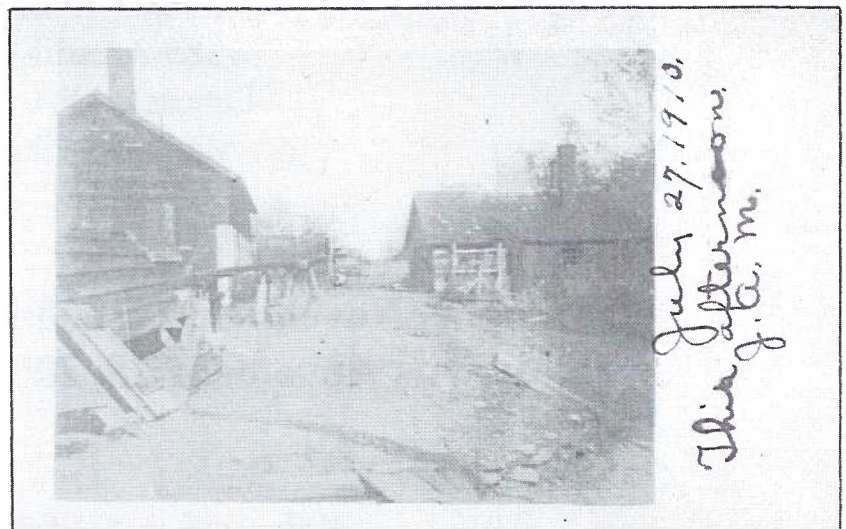


Two days later, June 15, 1907, John sends another RP card from Lititz, "Anna, While waiting here for the train to go to Millway, I am in seeing the trout. They are as fine as ever. There is a picnic in the park today from Lancaster. Rev. J. W. Menninger is among them. I was home last night. H--- I'll be there too on Thurs. night if not before." Along the margin of the view he adds, "Ruins of The Old Washing and Sorting House at Nickel Mines, Pa. Taken May 19, 1907."

"Putting on a shingle roof today near Mt. Pleasant" is John's brief message on another RP sheep portrait.



Two similar RP views were mailed to John from Anna (the second one she dates, Nov. 22, 1907). They show the construction of the dam at McCall's Ferry, later renamed Holtwood Dam.



The final entry in our story is this July 27, 1910 real photo card. It offers no reference to the several frame buildings or what may be a long sluice (at the Nickel Mines?). JAM simply notes, "This afternoon."

Follow-Up –

Fantastic Find

In the August *CARD* we featured the only Lancaster barbershop we've ever found on a postcard. Rupert Danz's shop, when he retired, was at 242 ½ W. King St. He had published the postcard to inform his customers of his move from the prior location in the nearby Stevens House. On the reverse Rupert had included the locations of his family's previous shops:

1881 – Adam Danz at 106 Old Dorwart St.

(1884 – Son George joined his father.)

1898 – George Danz at 235 W. King St.

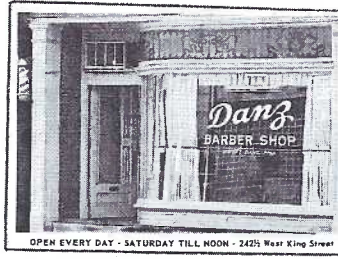
(1926 – Son Rupert joined his father.)

1944 – Rupert in Stevens House, King and Prince Sts.

1963 – Rupert opens at 242 ½ W. King St.

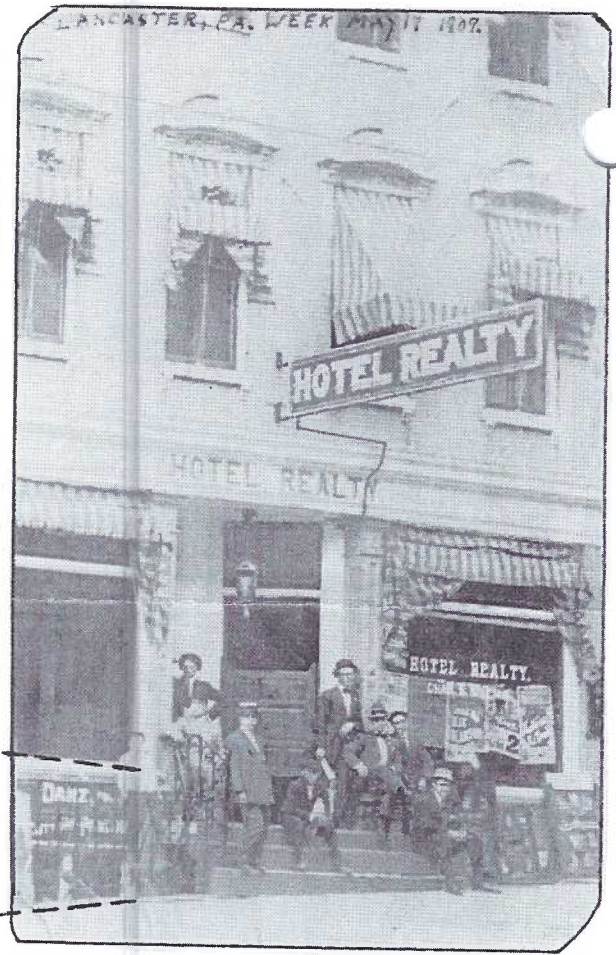
Since August, a very good postcard friend steered your editor to a local RP card. The postcard (shown 90%) barely survived its 100 years – two corners are missing, two are creased, and someone had printed *in ink* across the upper edge "Lancaster, Pa. Week May 17, 1907." On the back (also in blue ink) Celia wrote, "This is one of the ones I had taken off" (That removal left globs of glue still stuck to the surface.) Evidently Celia was stripping a photo album – and the missing corners are still in the album!

The Lancaster note fortunately helped in getting the card back home. Early city directories show the Hotel Realty was at 33-35 West King St. (Hager's Dept. Store was at 25-31 W. King.) The proprietor's name, Chas. S. Killian, is seen in the window beneath the hotel name to the right of the entrance. Theater posters are glued across the window. Nine men and boys decorate the hotel's steps.



Now to the Danz connection.

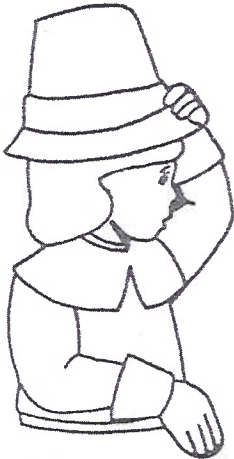
Through the iron rail that the boy sits on (left) can be seen "Danz Cutting Parlor" indicating the barber shop in the basement. Is it possible that in compiling his family's barbering history Rupert was mistaken, or mis-read notations that his dad's first shop was not at 235 W. King St. but rather at 35 W. King St. as the directories confirm?



MORLATTON POST CARD CLUB INC.

34th Fall Postcard Show

Farm and Home Center
1383 Arcadia Road
Lancaster, PA 17603
(off Manheim Pike Rte. 72)



Friday, November 27, 2009 - 10 A.M. to 6 P.M.
Saturday, November 28, 2009 - 10 A.M. to 4 P.M.

No Pre-Show Buying

Admission \$2.00
(50 cents off with ad)

For more information call
Kay Feight, (717) 263-1638
Leon Rowe, (610) 444-0641