

THE CARD - Vol. 20, No. 9. Issue 237. September 2009.

Monthly Publication of the Lancaster County Postcard Club, Lancaster, PA.

Enjoying postcards through education and entertainment.

Next Meeting: Sept. 21, 2009. Farm & Home Center. Buy, Sell Trade from 5:30. Meeting – 7:00 pm.

Yearly membership is \$10 (\$5 for each additional member at the same address.)

Membership chairman: Richard Pendergrast, 950 Willow Valley Lakes Dr., I-506, Willow Street, PA 17584.

LCPC c/o 2009 Editor: Jim Ward 1795 Kleinfeltersville Rd. Stevens, PA 17578-9669

Club website: www.playle.com/clubs/lancaster or Google search: Lancaster County Postcard Club



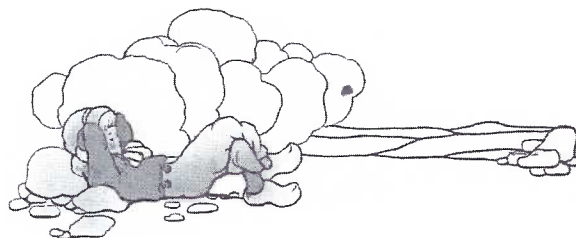
This little Dutch pair try blowing a tune over the mouth of their large delft jug; PFB series #6523.



Always keep der tulips vet before der can runs dry.



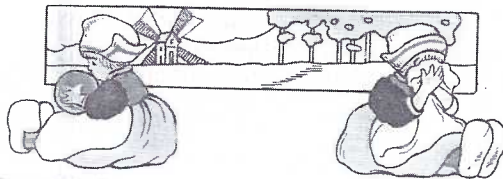
It's always goot fishin' weather ven der weather is goot for fishin'!



Vot's der use in vishing for some-ding you ain't got ven you got to get up und go get it?



Von stitch in der time is voith two in der side!



Ven der feelings is hurt don't cry – for den dey are vet also!



Ven der vetter is vet, de bigger der umbrella der less vetter der vetter.



Ven I pull der trigger dey fly away und ven I don't dey stay sittin; so vot's der use?



No von cen luf you haf so much
As I now luf mine dear old Dutch

Local collectors remember this Dutch girl (Tuck series #108) was a favorite of Elaine Buck Levin, a Renninger dealer from whom many of us bought cards back in the 1970s.

Expo Recap

Expo Chair, Jere Greider wishes to extend a very big THANK YOU to all members who gave a hand in the 2009 Expo; from Friday night's set-up of tables, chairs, and giant easels (along with competition boards) to the all-day greeters at the club table in the vestibule to the final tear-down after the show. 'Seems like every year we're fearful there'll be a lack of help, but every year the LCPC membership comes through.

Pres. Dede Schaeffer dittoes Jere's comments and adds that "Jere did a super job" heading the Expo's myriad facets.

Attendance this year was barely 200 – no different from most shows nationwide, but we can be proud of the fine turnout of competitive boards, no a record, but still a great representation. And a novice to Expo entries won Best of Show! Congratulations!

Expo Competition Boards

Walter Mowrer chaired this year's board competition. He was ably assisted by his wife, Barb along with Barbara and Bud Heim. "Thanks" go to all of these folks. Judges, chosen from among the dealers included Doris Kay Feight, Lee Dixon and Daniel Allen. They had time before the show began to carefully check the many entries.

Best of Show James Tanis Art Deco Kids
People's Choice Jim Ward World War I Propaganda

ANIMALS (13)

First Cheryl Edwards Dalmatians
Second Sandra Shaub Africa
Third Barb Heim Spring Tails

Honorable Mentions

Don Brown Pa. Grand Canyon Animals
Barb Heim Birds of a Feather
Barb Heim The Tall Tail Story
Barb Heim The World of Molly Brett (2 boards)
Bob Kramer Endangered Species
Walter Mowrer Domestic Animals by Tuck
Harold Moyer Animals at Work
Ruth Moyer Animals' World
Dolores Rowe Froggie Follies
Jim Ward "B" is for Bears

CHILDREN (10)

First James Tanis Art Deco Kids
Second Walter Mowrer Children's Toys
Third Ruth Moyer The Future of the 20th Century

Honorable Mentions

Don Brown Children Duos from Yesterday
Cheryl Edwards Jesus Loves the Little Children
Barb Heim Embossed Children of Christmas
Bob Kramer Real Children
Harold Moyer Little People
Dolores Rowe Down the Shore
Jim Ward Exploitation

FOREIGN (7)

First Dolores Rowe Japanese Miniature Works of Art
Second Jim Ward World War One Propaganda
Third Jas. Tanis Greetings Professors Shumway

Honorable Mentions

Don Brown Reformation Leaders
Bob Kramer 19th Century Europe
Harold Moyer Switzerland
Ruth Moyer Oberammegau

HOLIDAYS (9)

First Jim Ward Those Other Holidays
Second Dolores Rowe Here's to the Glorious 4th
Third Barb Heim Santa's Transportation

Honorable Mentions

Don Brown Halloween
Cheryl Edwards Easter Rabbits and Children
Walter Mowrer A Child's Christmas
Harold Moyer A Glorious 4th
Ruth Moyer Cats in October
Sandra Shaub Pilgrims Pride

Thanks go to all of the participants for the time, effort and expense in composing exhibit boards.

Future Show

Oct. 3 – The Great Eastern Allentown Advertising and Paper Show. \$7 adm., \$6 w/adv. card. 9 am to 6 pm.

Gifts of Windows Two

These details went by the board during a recent meeting and the members involved deserve a major commendation for their job in delivering our Vol. II postcard books - gratis - to these nursing facilities:

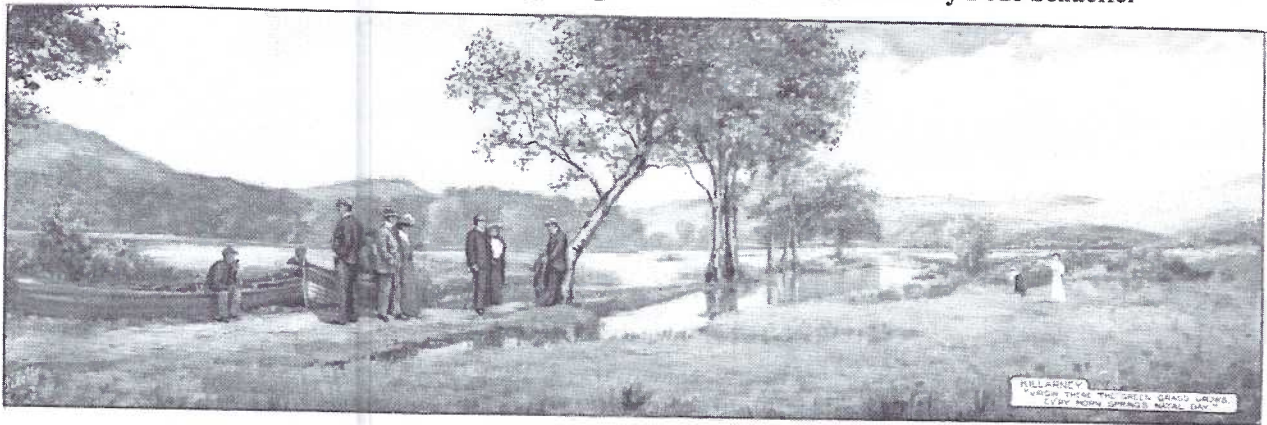
B = Betty and Tom Beck; G = Jere Greider

Audubon Villa	B
Brethren Village	B
Calvary Fellowship Homes	B
Conestoga View	B
Denver Nursing Home	B
Ephrata Manor	B
Fairmont Homes	B
Garden Spot Village	G
The Glen, Willow Valley	G
Golden Living Ctr., Lancaster	G
Hamilton Arms Center	G
Harrison Senior Living, Christiana	G
Homestead Village	G
Lancashire Hall	B
Landis Homes	B
Lakeside at Willow Valley	G
Luther Acres Manor	B
ManorCare Health Services, Elizabethtown	G
ManorCare Health Services, Lancaster	G
Maple Farms Nursing Center	B
Masonic Village, Elizabethtown	G
The Mennonite Home	G
Moravian Manor	B
Mt. Hope Nazarene Retirement Comm.	B
Pleasant View Retirement Community	B
Quarryville Presbyterian Ret. Comm.	G
Rheems Nursing and Rehab. Center	G
St. Anne's Retirement Community	G
Susquehanna Valley Nurs. & Rehab. Ctr.	G
United Zion Retirement Community	B
Village Vista Manor	G
Zerbe Sisters Nursing Center	G

Thanks, folks, very much!

Local Covered Bridges

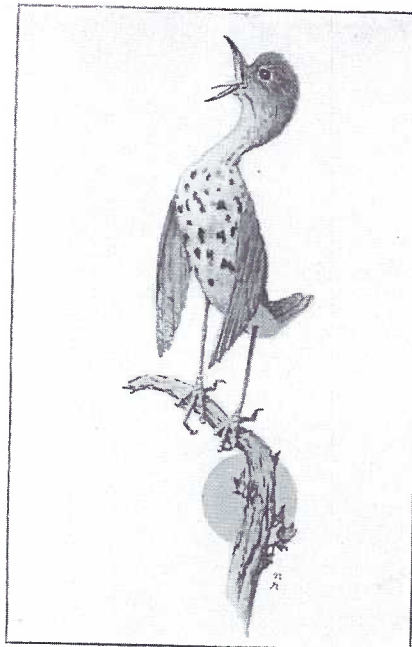
In 2002, Bob Shirk, a former LCPC member, photographed and published a set of 40 full-color PCs of identified covered bridges of Lancaster County. The set was \$10. The next year Bob continued the coverage, plus a few in Chester County, for a total of 50 more different views that sold for \$17.50. Jim Ward has these sets – a total of 90 views – available at the next few meetings. The double set (90 postcards) is now priced at \$10 total.



William W. Quatremain, 1857-1930, was an English watercolor artist whose work was reproduced on postcards. He worked from 1906 to 1919 in the postcard field, mostly Stratford-upon-Avon, Shakespeare's Country, castle, towns and the Isle of Wight. **Alfred Robert Quinton**, born in England in 1853, was a very well known artist of post-cards. Between 1912 and his death in 1934 he painted over 2,000 scenes of the Southern Coast, and southern counties reflecting rural life. He worked for Salmon, Faulkner, McKenzie, and Tuck publishers. There is even a society to collate information about this artist. This double-size unsigned image is typical of their work, though its identity cannot be attributed to either artist.



Winold Reiss was born in Germany in 1888. He moved to America in 1913 with a dream of painting Indians (Native Americans). He is best known for his portrayals of the Blackfoot Indians in Montana and Alberta used on calendars, menus and post-cards for the Burlington Northern Railway. Due to anti-German sentiment during the 1940s, his works fell from favor. He died from a stroke in 1953.

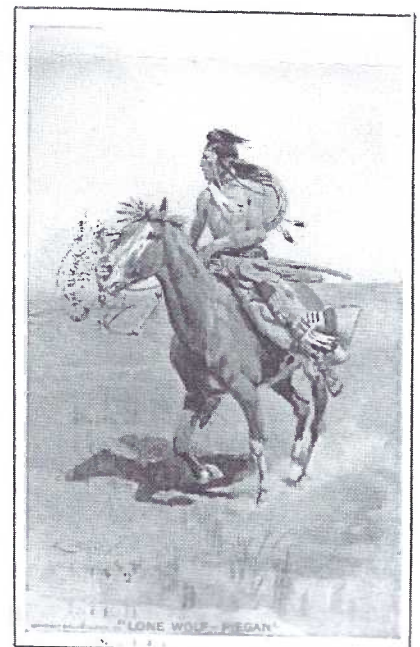


Born in NYC in 1894 **Norman Rockwell** was one of the most well known American illustrators. He is best known for his *Saturday Evening Post* covers and his famous Four Freedoms paintings – Speech, Worship, Want and Fear. Over 500 of his works can be seen in his hometown studio, a custodianship in Stockbridge, MA. He passed away in 1978.

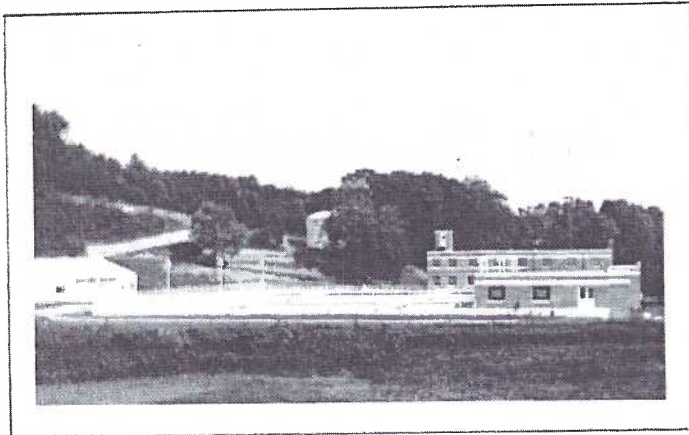


Frederick Remington, born in Canton, NY in 1861, was a sculptor, painter, etcher, and illustrator. Aside from a year at the Yale Art School, he was self-taught. Having bad health, he went west, clerked in a general store, became a cowboy, and later was ranch stockman. He drew from these experiences and became renowned for portraying life on the western plains. He died in Ridgefield, CN in 1909.

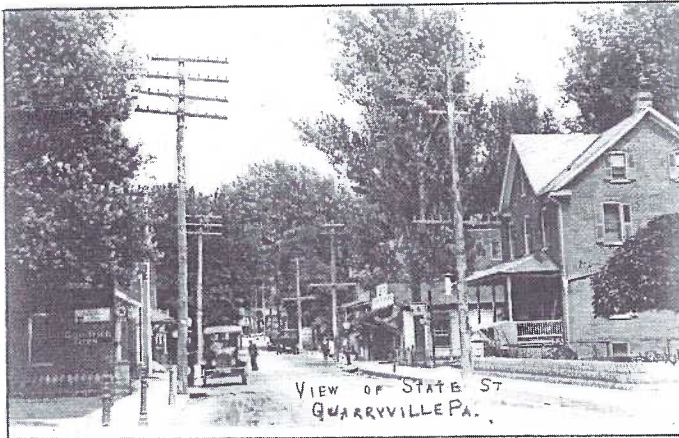
Charles Marion Russell was born in St. Louis, MO in 1864. He was the epitome of a cowboy artist. He came from a well-to-do family and traveled to Montana to work as a sheep herder (which didn't last long) and then took up hunting and trapping. In 1888 he began sketching and painting scenes from his life in the West for *Harper's Weekly*. By 1904 he was sculpting in bronze his favorite subjects - Native Americans. He died in Great Falls, MT in 1926.



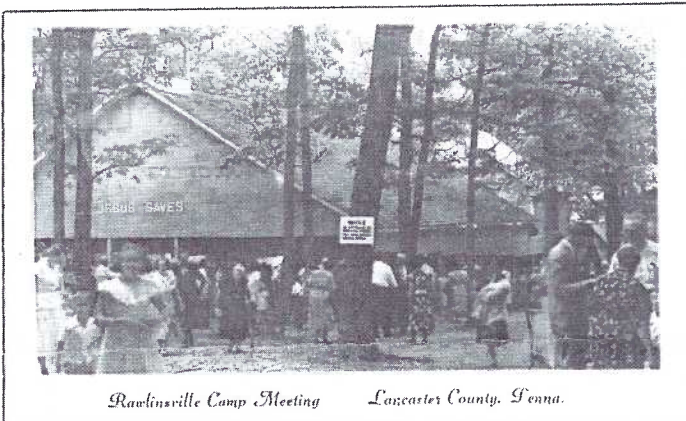
An alphabetical tour of locations found on postcards in Lancaster County by Jim Ward.



Pine Grove RP('40s)Octoraro Water Treatment Plant.

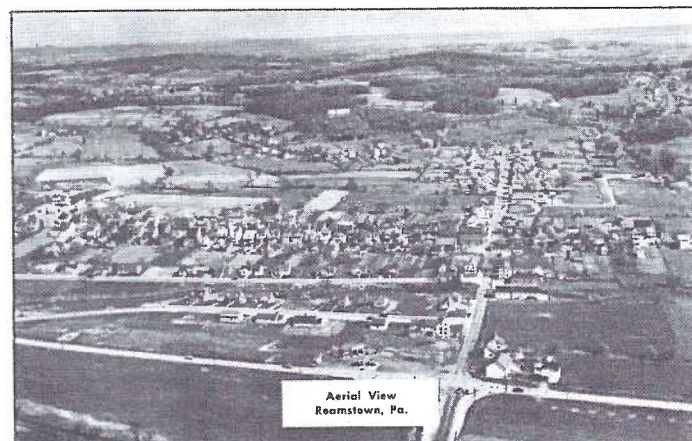


Quarryville RP (1918-30) East State St.

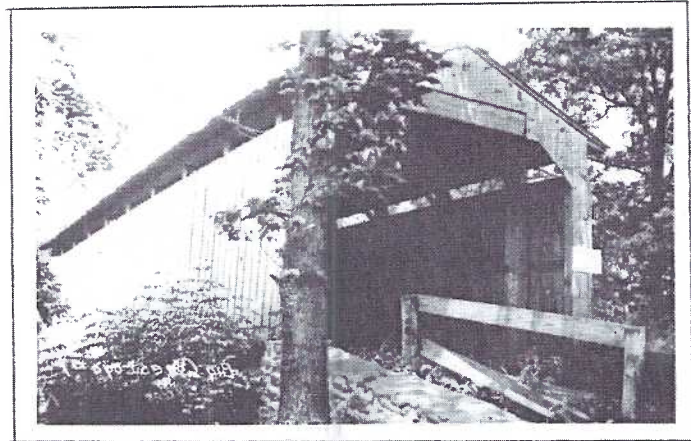


Rawlinsville Camp Meeting Lancaster County, Penna.

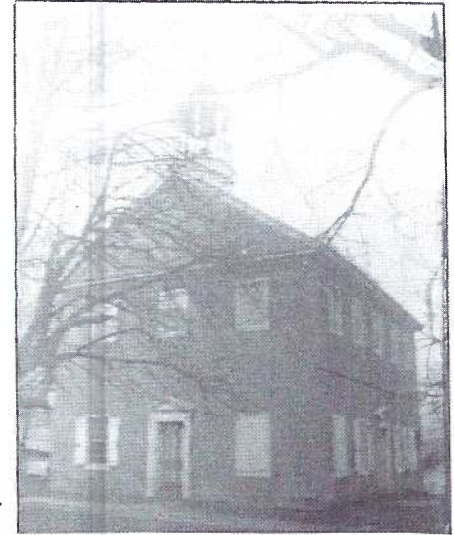
Rawlinsville RP Rawlinsville Camp Meeting, '57 PM.



Reamstown Aerial view by Nyce Mfg. Co.



Refton RP Miller's Mill Covered Bridge, 1950s.



Reinholds RP (1904-18) Swamp Church.

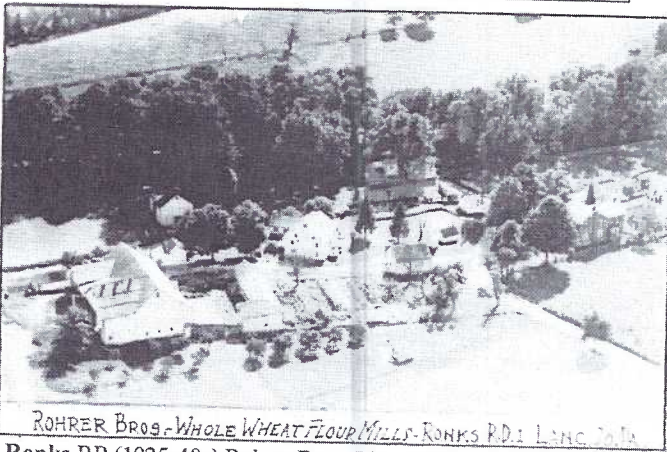


Rheems RP (1904-18) 100 block Main Street.

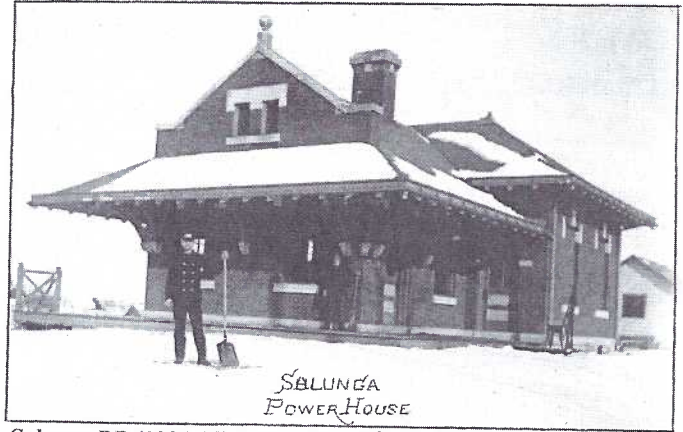


Rohrerstown RP Hotel Rohrerstown. Undated, u/b.

An alphabetical tour of locations found on postcards in Lancaster County by Jim Ward.



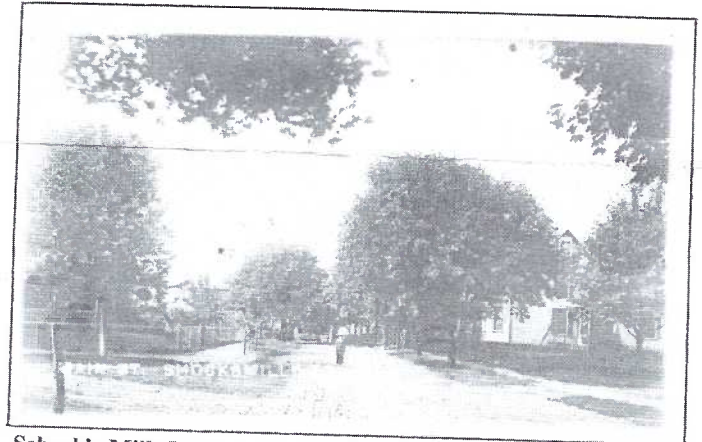
ROHRER BROS. WHOLE WHEAT FLOUR MILLS - RONKS RD. 1 LANC. CO. PA.
Ronks RP (1925-40s) Rohrer Bros. Flour Mills.



SALUNGA POWER HOUSE
Salunga RP (1904-18) Power House for trolley line.



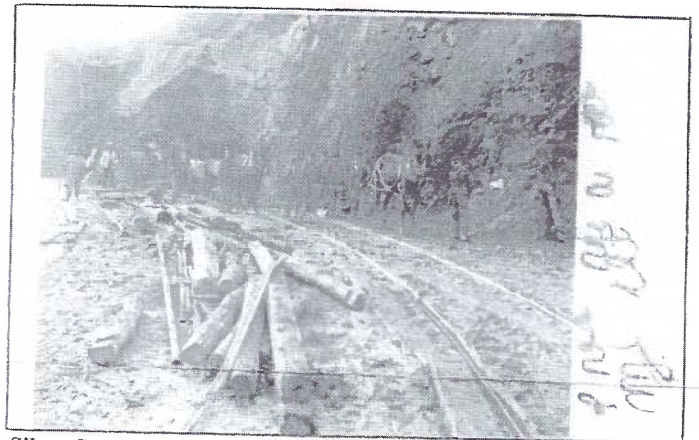
SCHOOL HOUSE
ROTHSVILLE, PA.
Rothsville RP (1904-18) School House (still standing).



Schock's Mills RP Main Street. 1929 P.M.



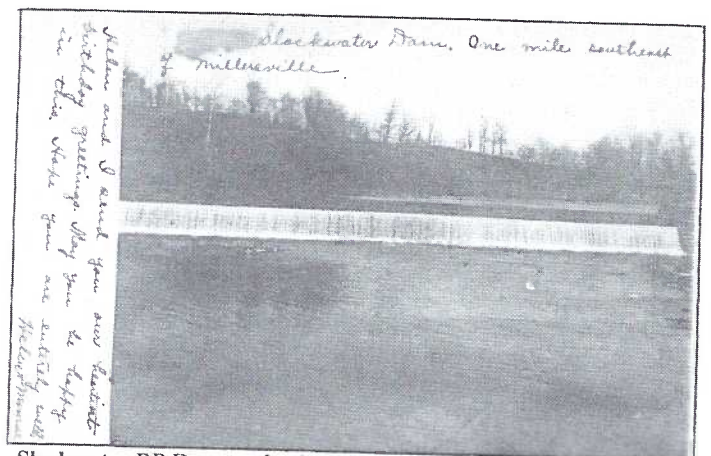
Rowenna RP (1904-18) School teachers and 51 pupils.



Silver Springs RP Grubb Ore Mine. u/b, not dated.



Safe Harbor RP Safe Harbor and river ice. 1911 PM.



Slackwater RP Dam south of Millersville. 1907 P.M.

RHEEMS

A Few Notes and Postcard Checklist

H. M. J. Klein's 4-volume history of Lancaster County (1924) is a time-honored and respected source for local information. But on the origin of Rheems, Klein has let us down. He describes it as "an active little village southeast of Elizabethtown, developed around the Rheems school-house." Will someone kindly explain, why build a schoolhouse in the middle of nowhere? Weren't there homes for the children? Didn't those families choose to live there for other reasons than educating their children?

Another source tells us the "tiny hamlet of less than 70 families started gallantly in 1891 with the name "Avata," in honor of a racehorse, which, although we know nothing of its ownership, or possible achievements, throws an aura of romance over the origin of our town." We *do* know the first post office was established on Oct. 3, 1891 as Avata with W. L. Heisey as postmaster. Feb. 5, 1894 the name was changed to Rheems, "in honor of the original landowners, when a member of the Ream family returned from Kansas." (More questions and no answers!)

Our article centers on the postcards we've seen and so we'll leave the romance, etc. to others.

Printed Views (not identified)

It's possible the following cards were published by The Centennial Publishing Company. The CPC's manager and treasurer was W. D. Chandler, druggist and publisher of numerous postcard views of Strasburg where he had lived previously. Chandler's biography is prominent in the *Centennial Souvenir Book of Mt. Joy and Florin* (1912). In addition, his drug store address, as well as the Centennial Publ. Co. address, are both given as West Main Street in Mount Joy. A *fair assumption* is that, with Chandler's interest in PCs and his role on the centennial committee, the cards were published by CPC. (Note – many collectors agree that the quality of the views is poor.)

Coalyard (sic) and Grain Warehouse, Rheems, Pa.
High C* Lime and Stone Co, Quarry No. 1, Rheems, Pa.
Lime Kilns and Railroad Culvert, Rheems, Pa.
Looking West from Post Office, Rheems, Pa.
Old Railroad Bridge, West of Rheems, Pa.
Post Office and Express Office, Rheems, Pa.
Warehouse/Coal Yards/Academy/Conservatory/Music
*did the "C" stand for Calcium?

Real Photo Views by Ed. Herbener, Newark, DE.

8370 Main St., P.O., Rheems, Pa.

8372 East Main Street, Rheems, Pa.

8376 P.O., Res. & Store of L.M. Kraybill, Rheems, Pa.

Real Photo Views, no publisher ID, but captions are in square capital letters and all read "Rheems, Pa."

School house, second bldg. (now part of nursing home)

Kraybill's General Store and P.O. (diff. from above)

Main St., homes w/wire fencing at #106, 108, and 120

Main St. homes, picket fences (#130 to #138)

Enterling Garage, homes at #108 and #110

Railroad Station (left), train and crew on right

Misc. Real Photo Views, no publ. ID, no captions

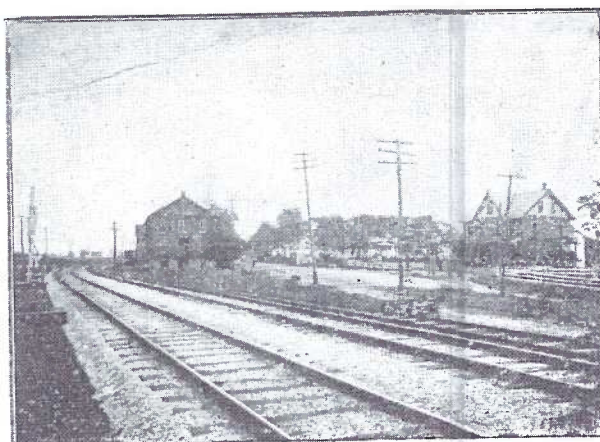
Brick bldg. that housed trolley station and rotary

Landis Bros./Col. gas engines and Studebaker agency

Three Studebakers, carriage at Landis Bros. agency

Rheems school children with four teachers (1908)

Additional views may be submitted to share in a future issue of The Card. Please incl. complete description.



COALYARD AND GRAIN WAREHOUSE, RHEEMS, PA.

Coal Yard and Grain Warehouse, Rheems, Pa.



#8376 P. O. Res. & Store of L. M. Kraybill, Rheems, Pa. It has a May 1, 1915 cancellation at Rheems.



Rev. reads "Rheems School, 1908, Ella E. Heisey"