

# THE CARD - Vol. 20, No. 1. Issue 229. January 2009.

Monthly Publication of the Lancaster County Postcard Club, Lancaster, PA.

*Enjoying postcards through education and entertainment.*


Next Meeting: Jan. 19, 2009, Farm & Home Center. Buy, Sell, Trade from 5:30 pm. Meeting – 7:00 pm.

Yearly membership is \$10 (\$5 for each additional member at the same address.)

Membership chairman: Richard Pendergrast, 950 Willow Valley Lakes Dr., Willow Street, PA 17584.

LCPC c/o 2009 Editor: Jim Ward 1795 Kleinfeltersville Rd. Stevens, PA 17578-9669

Club website: [www.playle.com/clubs/lancaster](http://www.playle.com/clubs/lancaster) or Google search: Lancaster County Postcard Club



**AVE MARIA**

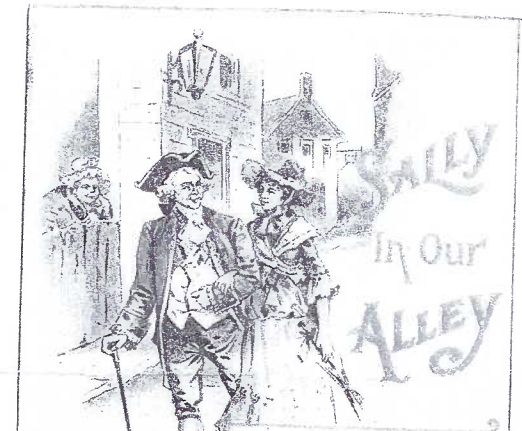
32

Mighty love is pure and sweet  
Heavenly love is pure and sweet  
Heavenly love is pure and sweet  
Heavenly love is pure and sweet  
Heavenly love is pure and sweet  
Heavenly love is pure and sweet



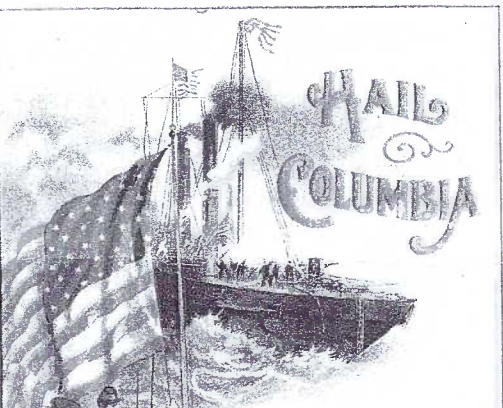
**The Wedding March**

Friends at your side  
Wedding and bride  
To the church for there they wait to kneel  
Vows and kisses, truly in  
Bright bride and groom together in joy and care



**Sally in Our Alley**

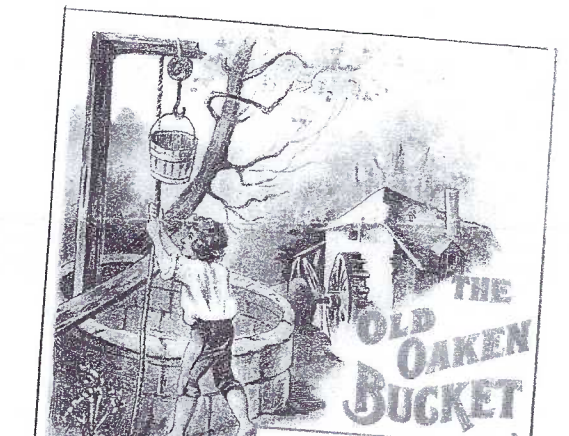
Oh Sally in our Alley  
Many live pretty Sally in the  
Jewelry of the world and live in  
Sally in our Alley  
Half so sweet as Sally in our Alley  
Sally in our Alley



**HAIL COLUMBIA**

Hail! Columbia, land of the free  
Hail! Columbia, land of the brave  
Fought and died in freedom's cause, who  
Fought and died in freedom's cause, and  
When the storm of war is gone, let  
Joyful the peace your val - or war, let

## Music or Making Music Is the Theme For January's Single Card Competition



**THE OLD OAKEN BUCKET**

How dear to this heart are the  
Words of my childhood, when I was a  
See - you are - when I was a  
Or - chard, the forest, the deep - sea - glad  
Wild - wood, and as - 'ry loved you watch my  
In - fan - cy knew the water - spread - long



## Christmas Party

**Set-up** Thanks go to Carol and Ray Dennis and Dede Schaeffer for supplying table decorations and setting up the tables with the help of Jere and Cookie Greider, Steven Mummert and Charlie Schiefer.

**Card Competition** The subject of a single card was the letter "S." It offered a variety of seasonal images – as well as others and that's what appeared among the twelve entries. The votes were very close including the Hon-orable Mentions. The winners are:  
Tom Beck **FIRST** Sloshed (a holiday celebrant)  
Shirley Summers **SECOND** Raccoon in an open mailbox in the snow  
Sandra Shaub **THIRD** A beautiful flora "S" by popular artist, Catherine Klein.

### Honorable Mentions

Betty Beck Snowman with broom and wreath  
Cheryl Edwards Shepherds, sheep, stars, and seraphims  
Susan Glass Santa and auto filled with toys  
Jere Greider Sinclair Service Station, East Petersburg  
Harold Moyer Santa with his pipe  
Maria Schurz Santa and Christmas Child in auto  
Jim Ward Snowman chimney sweep  
Jan Weitzel Smoochin' under the mistletoe  
Gisel Withers Santa sleeping on the job

**Participants** – We will send your award card (and cash if applicable) with your next issue of *The Card*. Please look carefully through your mail. Thanks to all 12 participants and the nearly 60 voters!

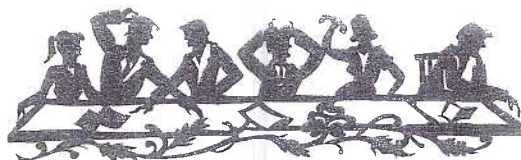
February's single card competition is LOVE.

**Door Prizes** We always seem to have dozens and dozens of nice holiday items donated by members and this year was no exception. Thank you, everyone!

**Program** The subject was a Favorite Holiday Postcard and the following offered images of Christmas along with brief explanation of why the card was a favorite - Gisela Withers, Jim Ward, Shirley Summers, Dick Pendergrast, Cheryl Edwards, Tom Beck and Betty Beck. Betty operated the Elmo Visual Presenter – our second use of the projector.



**January Program** The subject is the number 9. Let's have a couple dozen members participate. There are so many subjects – 2009, a 9<sup>th</sup> birthday, September (the 9<sup>th</sup> mo.), 9 team members, 9<sup>th</sup> symphony, a cat's 9 lives, the 9<sup>th</sup> President, 9 choirs of angels, etc.



### LCPC Slate of Officers and Directors for 2009

President - **Dede Schaeffer**

Vice-President - **Doug Milligan**

Secretary - **Gisela Withers**

Treasurer - **Barabra Mowrer**

Directors for 2008-2009

**Jim Brodt, Gwyn Fulmer, Bob Kramer**

Directors for 2009-2010

**Tom Beck, Ray Dennis, Walter Mowrer**

### Inclement Weather Numbers

In the event of bad weather or a forecast for bad weather on the day of our meeting, you can phone one of the members listed below, between noon and 1 PM, to confirm whether or not if there will be a meeting – Dede Schaeffer 392-3955, Jere Greider 285-5872 Jim Ward 721-9273, Anne Steinberg 786-2362

## The Card for 2009

### Preface

By Jim Ward

Before our new president took office, I offered to help Dede Schaeffer with this year's Club Page in *The Card*, since she has no computer and this information has, in recent years, been the job of the president. Page One - the cover - is a simple matter, so I offered to throw that in for the same price (\$0).

### Two Series for Our Members

Not long after this, Dede suggested that she might compose an illustrated alphabetical sampling of artists (one of her interests) to run as a single page each month. She wondered if I might consider a similar alphabetical series of local town views.

I did. It appealed to me.

I consciously avoided duplication of any views that appeared in *Windows to Our Past, Volumes I and II*. Since real photo views seem to be the present rage, I concentrated on them. In some cases I used a printed card when I had no real photo of the town.

This month's double page entry begins with Lancaster City. Succeeding months will be an alphabetical listing of 144 towns and villages in the county. The views are either dated by the type of stamp box used for the card stock\* or by a postmark.

Thanks go to Harold Moyer for his help in proof reading the series.

\*Our library has several books explaining how stamp boxes help date the card stock. Read them.

### *Windows to Our Past, Volume Two Presented to Retirement Homes*

Early Christmas presents were being presented to retirement homes throughout the county last month by Jere Greider and the Becks. A copy of our *Vol. 2, Windows to Our Past*, is a gift to each home's library. Inside the cover are the phone numbers of Jere, Betty and Tom Beck and Carol and Ray Dennis, so requests for purchases can be filled. By Christmas 32 books had been delivered to the homes listed in a recent newspaper article. This is a thoughtful gift we should have considered earlier.



## An Alphabetical Sampling Of Postcard Artists

By Dede Schaeffer

### ANDERSON, ANNE

She was a British illustrator of children's books and images of children on postcards. Her work was produced from 1917 to 1937.



**BOILEAU, PHILLIP** (pronounced like "swallow" but with a B). Born in Quebec, Boileau moved to New York at age 1. He was known for images of beautiful women, images he drew long before he met his second wife, Emily. Upon viewing his work, she was amazed to see her image staring back at her throughout the stages of her life.



### ASTI, ANGELO

Born in Paris, Asti lived from 1847 to 1903. Known for his portraits of women; many were published as calendars by Brown & Bigelow.



### BOWLEY, SOPHIA MAY (1864-1960) and BOWLEY, ADA LEONORA (1866-1943).

These British sisters worked for Valentine publishers but then were chosen by Tuck as senior artists. They designed all sorts of paper items for the company — mechanical books, illustrations, postcards, punch-outs, and cut-outs. Images ranged from birds and animals to children, Santa's and nursery rhymes.



### ATWELL, MABEL LUCY

Born in England in 1879, Mabel Lucy wrote stories and verse for children and illustrated them as well. She was very well known for pottery and advertising tins; even hankies can be found with illustrations similar to her postcard work. She also drew fairies. Mabel Lucy married another illustrator, Harold Earnshaw. She died in 1962.



**BURD, CLARA M.** An American artist. Not much is known about her. Dr. Victor Christie of Ephrata, hoped at some point, to publish information about Clara. She is well known for her artwork of children and nursery rhymes published in books and on postcards, mostly in the '20s.

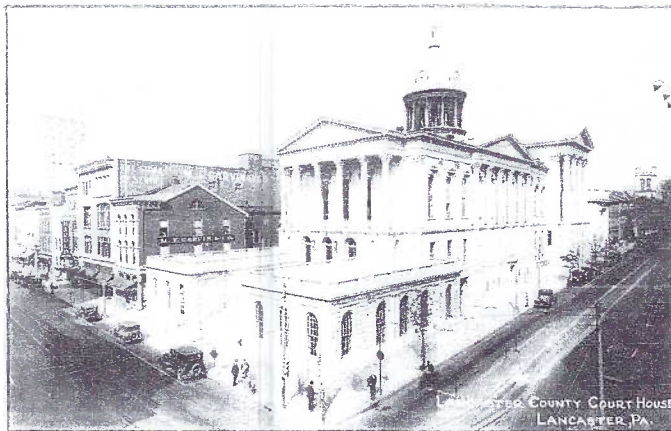




Lancaster City - part of the tour of locations found on postcards in Lancaster County by Jim Ward.



RP NE corner of Penn Square; Xmas tree sales. 6/09 PM (post mark)



RP (1925-40s) Court House at Duke and King Sts.



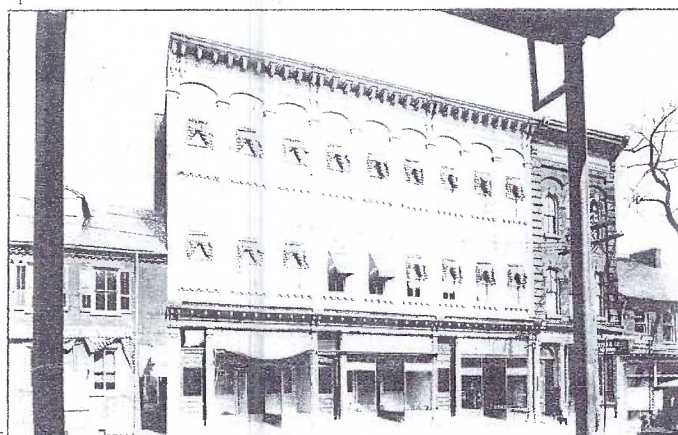
RP (1904-18) Photo from trolley window at President & Marietta Aves.



RP (1904-20s) SW corner Penn Sq.; patriotic bunting on CW monument.



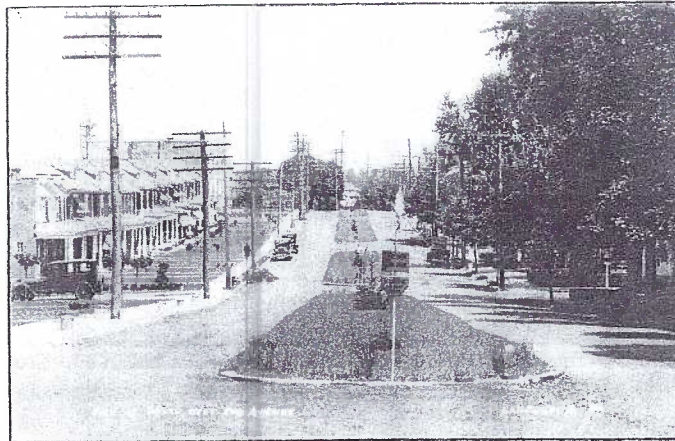
RP (1904-20s) Looking up N. Queen St. with trolley patrons.



RP (1918-30) Shops and apts., 300 block of N. Queen St., east side.

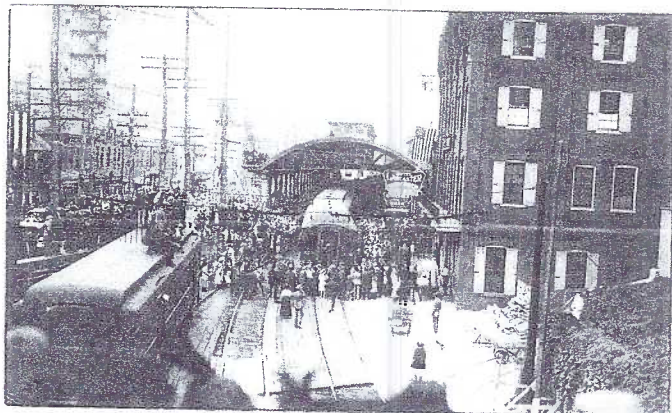


RP (1950s) W. King stores on ground floor of Masonic Hall.



RP (No date) Looking north to Hamilton Watch on South West End Ave.





RP (1904-18) Chestnut St. Railroad Station and Hotel Lancaster.



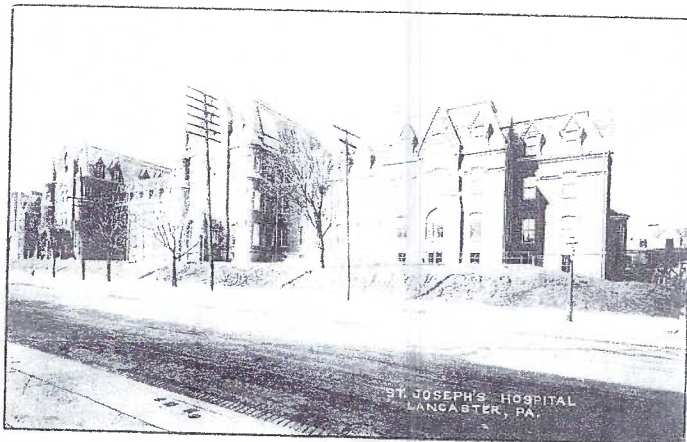
RP (1904-18) P.O. carrier poses outside Darmstaetter photo lab.



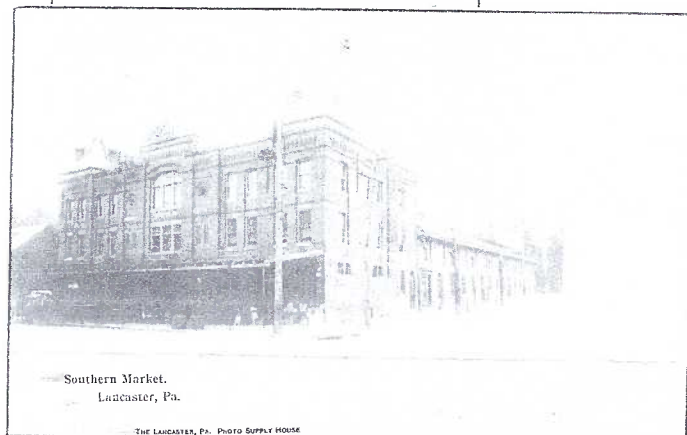
RP (1950s) PRR Station at north end of N. Queen St.



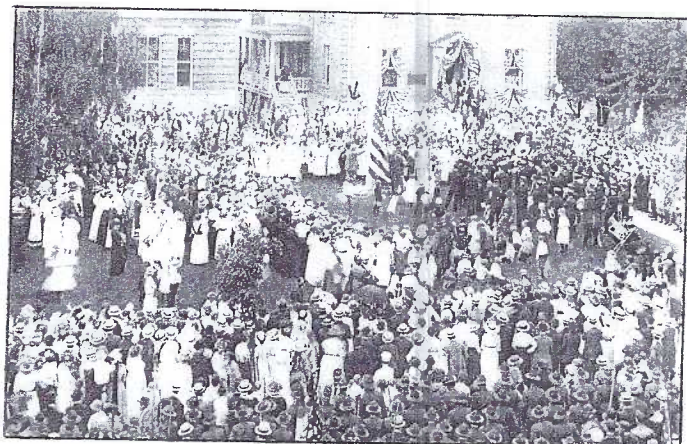
RP (1904-18) Looking east on W. Orange St. at YMCA bldg.



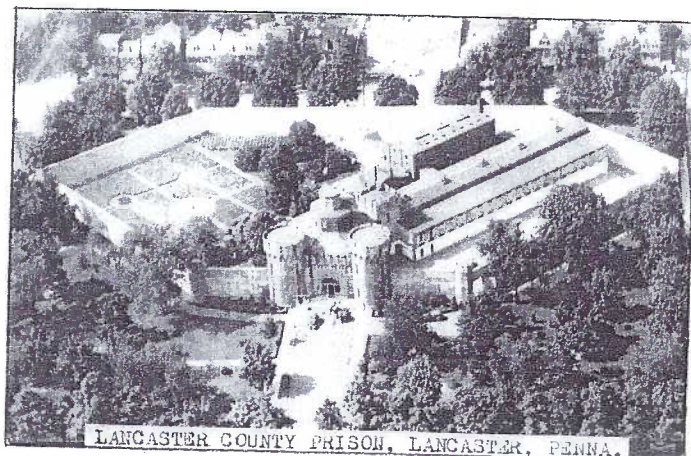
RP (1925-40s) St. Joseph's Hospital, trolley tracks on College Ave.



RP (c. 1910) Looking west on Vine towards Southern Market House.



RP (1904-18) Memorial Day celebration at General Hospital.



RP (1925-40s) Aerial photo of County Prison with inmates' gardens.



## Messages...ailments — Part 1.

Over the last 20 years, I've read messages on about 1,000 local postcards. From that number I gleaned fewer than 20 where the primary subject was sickness. Were local folks extra healthy or didn't they pamper themselves like we do today? Caution — If you're presently suffering, or "just under the weather," you may wish to skip this article. It won't help you feel any better. Parts of the PC message, unrelated to ailments, have been excluded.

Jan 1908, Lanc. to Phila. — Dear Emma, Baby is better. They give her 20 drops meat juice every 3 hours and a tablespoon of peptomized milk every hour with a powder in it. I went to Columbia yesterday afternoon. Aunts both are better. Linnie has not been out yet. Mamie's back is doing nicely but very painfull. Clyde was very sick. She feared she would have to go home. They want her to stay until her back is healed. Must get envelopes tomorrow, then will write. Affect., Mama.

Aug. 1908, within New Holland — Dear Lizzie, I thought I would let you know that Howard is better. He expects to get up tomorrow. He has kidney trouble instead of rheumatism as Harry had told you. Father & Mother were down yesterday, Try and come to see us sometime. Lillie.

Nov. 1908, E-town to Middletown — My school is closed this week on account of the pupils (that is some of them) and myself having eczema. Mine is almost cured but I don't think I'll have school anymore this week. If it is cured by Sat. I expected going to Steelton. So I will meet you at Middletown and go with you to Aunts Sara & Susan. Let you know later what train.

Jun 1909, Strasburg to Norristown — Will is better, getting along nicely but still suffers much. Hervey has measles instead of the other, they are out on him thick, but he is very good, but Manda is quite alone, but I think now all will do right if they do not take it; are using every precaution.

Aug. 1909, within Lanc. — I was coming over to see you but I had a fierce cold. I will be over sometime this week. Auntie won't forget her little friend Frank. On the other side (Woolworth store) is where Aunt Dora buys the grand candy. Be a good little boy until I get over. Aunt Dora.

Feb. 1910, New Holland to Terre Hill — Charles is getting along nicely. He was out a little, but he will not go to school for a good while as there is scarlet fever and measles in town.

Apr. 1910, Millersville to Mountville — Hello Clinger, Yes, the mumps are using me fine just now. But can't chew the chewing gum yet. Ha, ha.

Oct. 1910, Lapps to Lanc. — Dear Miss Anna, How are you getting along? The one side of Mamma's face is sore yet. The other side she can chew on. From Edna.

1910, Lanc. to Harrisburg — We had a dreadful time with Mom. The Doc stopped those tablets and she didn't close one eye for a night and a day. It was all we could do to keep her in bed. She is very weak. Clara.



### Ailment Postcards

These postcards (and more to appear in a future issue of *The Card*) are from the set of six, "Ailments of Childhood" Series published by Edward Gross. Art is by Katharine Gassaway.



2008

## A Good Year for LCPC

By Dede Schaeffer

Thanks to Jere Greider for his job as president of the club. During his tenure several improvements have been made to LCPC.

We have a new member, Elmo, a visual presenter that makes it much easier for anyone to volunteer for a program.

We now have everything stored at the Farm & Home Center and that makes it a lot easier for Sharon Gromis. She did a fine job in getting all the supplies to the meeting every month for several years.

Also, due to Jim Ward's contribution of the heavy duty cart, we have a mobile library that makes it easier for Jan Weitzel.

So, thanks to all for their work and their contributions.

### Future Postcard Shows

Jan 31, 2009 — The Elkton Md. Postcard Show will be at the Singerly Fire Co. building. Location is on Rte. #279 close to the 279/313 intersection. Hours are 10 to 4.