

**THE CARD VOL.19, NO.9, ISSUE 225 SEPTEMBER, 2008**  
MONTHLY PUBLICATION OF THE LANCASTER COUNTY POSTCARD CLUB, LANCASTER, PA  
ENJOYING POSTCARDS THROUGH EDUCATION AND ENTERTAINMENT.  
NEXT MEETING SEPT. 15, 2008 FARM & HOME CENTER. BUY, SELL, TRADE FROM 5:30 PM MEETING 7:00 PM.  
YEARLY MEMBERSHIP IS \$10.00 (\$5.00 FOR EACH ADDITIONAL MEMBER AT SAME ADDRESS.)  
MEMBERSHIP CHAIRMAN RICHARD PENDERGRAST 950 WILLOW LAKES DR., WILLOW STREET, PA 17584  
CLUB/TEMPORARY EDITOR'S ADDRESS C/O JERE GREIDER 3724 KENNEL AVE., COLUMBIA, PA 17512  
WEBSITE: [WWW.PLAYLE.COM/CLUBS/LANCASTER](http://WWW.PLAYLE.COM/CLUBS/LANCASTER) OR GOOGLE SEARCH: LANCASTER COUNTY POSTCARD CLUB.

## 16<sup>th</sup> ANNUAL EXPO. AUGUST 16, 2008





Our 16<sup>th</sup> Annual Postcard Exposition is now history. The pictures on the cover show an overview of the activity. I tried to show dealers, buyers, and workers. I would like to thank everyone that helped setup, sell tickets, cleanup and especially the members that worked all day doing whatever was needed. I would also like to thank the dealers that volunteered to be board judges. Last but not least thanks to all our quality dealers, without them we would not have the great shows year after year. I have only heard positive comments from all the dealers.

We had great response 38 display boards were presented in four categories. The winners are listed below.

### HOLIDAYS

1 <sup>st</sup> Place:	Cheryl Edwards	Thanksgiving Traditions
2 <sup>nd</sup> Place:	Walter Mowrer	Early Santas
3 <sup>rd</sup> Place:	Harold Moyer	Halloween

### OCCUPATIONS

1 <sup>ST</sup> Place	Dolores Rowe	Working 9-5 and Beyond
2 <sup>nd</sup> Place	Walter Mowrer	Poultry Farming
3 <sup>rd</sup> Place	Jim Ward	Katherine Griel (2boards)

### SMALL TOWNS

1 <sup>st</sup> Place:	Richard Edwards	Tioga Co. Small Towns
2 <sup>nd</sup> Place:	Donald R. Brown	Wisconsin Small Towns Mid 20 <sup>th</sup> Century
3 <sup>rd</sup> Place	Bob Kramer	Good Times, Bad Times

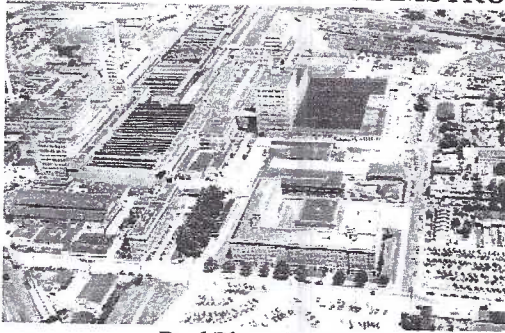
### TRANSPORTATION

1 <sup>st</sup> Place	Jere Greider	Coca-Cola Trucks
2 <sup>nd</sup> Place	Dolores Rowe	Era of Gracious Travel: Take the Train
3 <sup>rd</sup> Place	Donald R. Brown	Aviation: Tuck series #406

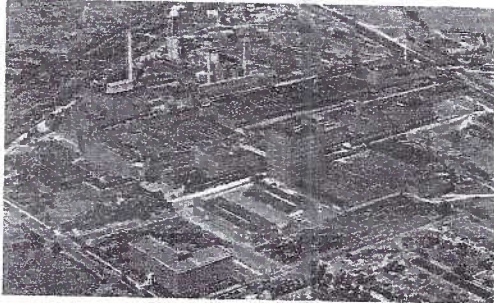
Best of Show:      Dolores Rowe      Working 9-5 and Beyond

People's Choice:   Walter Mowrer      Early Santas

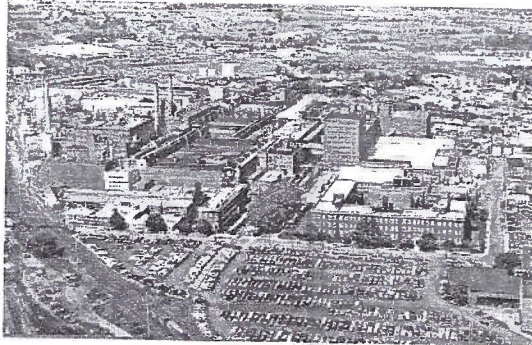
## ARMSTRONG CORK COMPANY



Real Photo Postcard



Linen Era Postcard



Chrome Era Postcard



Linen Era Postcard. Court of Honor for employees serving in W W 2

Many of us that have grown up in Lancaster County have had friend's and relatives that worked for Armstrong Cork Co. The aerial view postcards on the left show how much area the Lancaster Armstrong factory covered. Some of the buildings shown have recently been torn down. Armstrong still has offices and Research and Development on Columbia Avenue. They also have manufacturing plants in Marietta, PA. and other locations worldwide.

Armstrong started in a one room shop in Pittsburg, PA in 1860. Thomas Armstrong and John Glass carved bottle stoppers from cork and made their first deliveries in a wheelbarrow. By 1890 they grew to be the largest cork supplier in the world.

Cork began to be replaced by other closures so the company introduced insulating corkboard and brick in 1906. The Lancaster plant was constructed in a cornfield in 1909. The new plant manufactured corkboard the logical move was to fiberboard, then to ceiling board, cork tile and linoleum. This led to vinyl flooring, then ceramic tile, laminate flooring and carpeting. In 1938 Armstrong started making glass insulators for utility poles and that business was sold in 1969 to Kerr Glass. During WW2 Armstrong made 50 caliber round ammunition and wing tips for airplanes.

In 2000 Armstrong filed for bankruptcy because of about 173,000 asbestos personal injury claims. Today Armstrong is still in business but the one time largest Lancaster County employer has only a small fraction of their original employees.



## SEPTEMBER 2008 LCPC NEWS

Thirty members signed in at the August meeting. Gisela Withers read the minutes of the July meeting and they were approved. Gesila also read the treasurer's report. The August balance was \$5256.99.

In member news it was learned that Ruth Frankhouser was recovering from sinus surgery. Betty & Tom Beck were vacationing in Africa. Jim Ward read two very interesting emails he received from them. Sounds like Tom & Betty could present a program sometime in the future.

Jan Weitzel our librarian announced that all the club's books will be available from the library cart. Please make sure that you do not borrow a book without signing the library card.

Berean Bookstores formerly Provident Bookstores has been selling our Volume 2 Windows to Our Past books. If you shop in their store be sure to thank the staff.

Jim Ward announced that Palmyra, Pa Lebanon County will be celebrating 100 years in 2010. They will be issuing sets of postcards in six-month intervals showing the appearance of the borough through time starting in 1910.

Volunteers are needed to fill offices for 2009. A vice president and 3 board members are needed. If interested please see any current board member.

The September meeting is the deadline for items to be consigned for the November auction. Walt Mowrer is the auction chairman.

The program for the evening was Expo highlights. Some of the boards made for the Expo were on display. Everybody had a chance to take a leisurely view of the boards.

15 members took part in the single card competition. Subject was "Pets".

1<sup>st</sup> Dick Pendergrast "Dackel's Birthday"

2<sup>nd</sup> Shirley Summers "Sunshine News"

3<sup>rd</sup> Al Schaub "Hey, Segregation is illegal"

Honorable Mention Susan Glass, Jere Greider, Carl Haffley, Dorothy Haffley, Bob Kramer, Walter Mowrer, Harold Moyer, Ruth Moyer, James Tanis, Don Tribit, Jim Ward, Jan Weitzel.

The following people won a variety of door prizes. Mary Darrenkamp, Susan Glass, Carl Haffley, Kathy Kreider, Walter Mowrer, Al Schaub and Steve Wiker. The 50/50 \$17.50 was won by James Tanis.

I would like to thank Sandra Schaub for agreeing to be interviewed this Month.

One new member joined at our Expo.



Annetta Buettner lives in Pequea, PA. Her main collecting interest is Roller Skating.

**Next meeting: Sept. 15, 2008**

**Program: Bud Heim Trolleys to Marietta**

**Competition: Board, Children**



Sandra Eckman Shaub

Sandra was born at her grandparents farm in Drumore Township. She lived in Lancaster city for five years and then moved back to the farm for five years. After graduating from high school she became a homemaker and auction worker and in later years a nanny for her grandchildren. Sandra is the mother of six children and grandmother to twenty five grandchildren.

Sandra's postcard interest is mostly holidays, best wishes, several artists, blacks, patriotic advertising flowers. She has a interest in local history but does not collect local postcards.

Sandra joined LCPC in it's first year, 1990 and is member number 49. Sandra has served on many committees and offices. Decorating committee, refreshment committee, vice president, membership chairman, board card chairman, and board member.

When not collecting postcards Sandra enjoys looking for antiques, sewing, knitting, and reading non fiction books. Sandra likes to volunteer at the book store at Quarryville library and attend flea markets, antique shows and museums.

Sandra says her most exciting vacation was to Paris, France. Fishing, boating, camping, shooting, games and picnics at the family lake "forever" are some of her favorite things to do.





# Ephemera Sale

Saturday, October 4, 2008

4:00 PM

At

## RockMeyer Auction Parke

RockMeyer Auction Parke, 9 Brooks Avenue, Willow Street, Pequea Township,  
Lancaster County, PA 17584

Directions: Along Rt 272 south of Willow Street and north of Buck. Between  
EMiller and Frey's.

Preview Friday, October 3, 5:00-7:00 PM  
and

Saturday October 4, 2:00 - 4:00 PM

Over 1,800 old postcards from the early 1900's

Christmas  
Birthday  
Thanksgiving  
Pequea  
Lebanon  
Halloween

Valentine's Day  
Greeting  
Lancaster  
Millersville  
York

Easter  
New Year's Day  
Quarryville  
Marie Forge  
Gettysburg

Many other towns in PA and the USA

### Magazines

Post  
Farm Journal  
Life  
Reader's Digest (1930's-1950's)  
Ideals

Old Lancaster Advertising  
Old Books  
Old TV guides

Baseball Cards/Baseball Photos  
Stamp Collection (1950's-?)  
Coins  
Other miscellaneous items

## POSTCARD TERMS # 5

**Text** - Any message, poem, advertisement or title printed on the picture side of the postcard.

**Timbre Cote Vue** - A fad which placed the postage stamp on the picture side of the postcard. The term told authorities that the stamp is placed upon the view side. Sometimes these words were hand printed or applied with rubber stamps, can also be omitted.

**Topic or Theme** - Themes and subjects such as Dogs, Airplanes and Flowers. Not scenes or views.

**Tradecards** - Advertising cards issued before 1900. Often given away in products or with the purchase of a product.

**Undivided Back** - Postcards with no dividing line to separate the message area from the address. These cards were printed before March 1907 and help in dating a particular card.

**View Card** - Postcards that show views of cities including bridges, parks, store fronts and main streets. These cards were printed from plates that were prepared from actual photos.

**Vinegar Verse** - Usually found on Valentine Postcards, these curt and sometimes very hurtful messages offered an alternative to the overly sweet sentiments. Definitely not politically correct by modern standards.

**Vignette** - Postcard where the picture fades away into white background. Popular early style which left writing space on the picture side of the card.

**White Border** - These postcards followed the Golden Age and have a white border around the card. There are many stories about how this practice saved ink but I tend to believe it was just the "new look" for the era.