

THE CARD - Vol. 19, No. 3. Issue 219. March 2008.

Monthly Publication of the Lancaster County Postcard Club, Lancaster, PA.

Enjoying postcards through education and entertainment.

Next Meeting: March 17, 2008, Farm & Home Center. Buy, Sell, Trade from 5:30 pm Meeting – 7:00 pm.

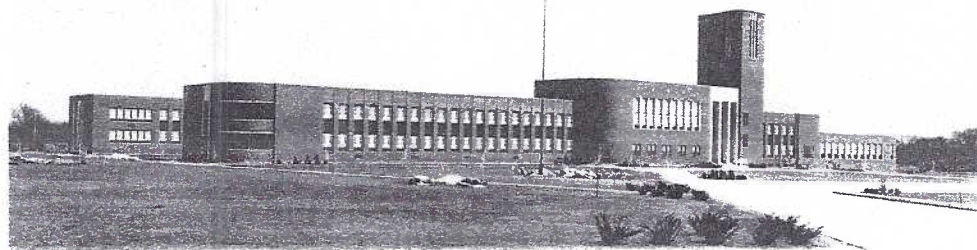
Yearly membership is \$10 (\$5 for each additional member at the same address.)

Membership chair: Richard Pendergrast, 950 Willow Valley Lakes Dr., Willow Street, PA 17584.

Club/editor's address: LCPC c/o Jere Greider, 3724 Kennel Ave. Columbia, PA 17512.

Club website: www.playle.com/clubs/lanaster or Google search: Lancaster County Postcard Club

Happy 70th Birthday McCaskey High School!



Lancaster's seventh high school.

*Boys' High School
Lancaster, Penna.*



Lancaster's fourth high school.



High School, Lancaster, Pa.

Lancaster's Seven
High Schools Pgs. 2 and 3

New 1887. Architect: Art View - Co. N. Y. City.

Lancaster's second high school.

1938 building is 7th City High School*

Happy 70th Birthday, McCaskey High School!

By Jim Ward

*Here's a brief recap of the seven Lancaster high schools gleaned from directories and local histories.

#1 – A stone building on N. Grant St., at the rear of the First Presbyterian Church, served as the first high school. (Specific dates unavailable.)

No postcard view is known of this building.

#2 – Ellis & Evans – “On Jan. 21, 1823, the (school) directors...they stated that they had purchased a lot on the corner of N. Prince and W. Chestnut Streets...for \$1,000 and that proposals were received and contract entered for the erection of a building with Alexander Miller of this city...for the sum of \$4,500. The house is 85 ft. deep by 35 ft. wide, roofed with slate, furnished with a nice cupola, and accommodating to the instruction of 500 children on the Lancaster plan*, and is nearly finished.” The school faced N. Prince St. and extended along Chestnut St. to N. Market St.

Gen. Lafayette visited the school in 1825.

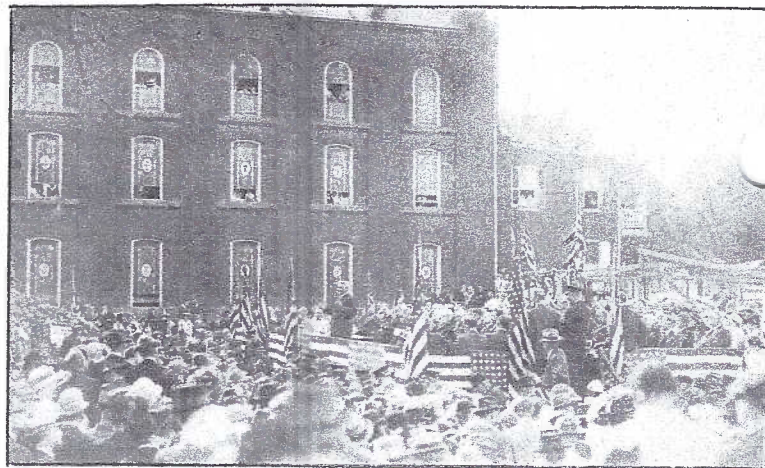
*Schools under the unique Lancaster Plan were financed by families of children who were able to pay *some* tuition. Nearly half of the pupils were still considered paupers or from indigent families and were also asked to (and did) attend free until Sept. 3, 1838 when *all* pupils attended free of cost, moneys being appropriated from city funds under the Pa. Common School System.

At least two postcard views are known. The b/w view on our cover is #2687 by National Art View Co., NYC. A second view (possibly copied) is printed in a pinkish shade, is also captioned, Old High School, Lancaster, Pa. but has the number A 2687. Along the bottom edge is “compliments of Hall & Salsburg, Credit Clothiers.” It was published by A. M. Deichler, Lancaster, Pa., firm notorious for using other publishers' views (with or without permissions?)

#3 – In 1869 a new high school was erected on N. Mulberry St. between W. Orange and W. Chestnut Sts. It was attended by boys only. The girls continued to use the older school at N. Prince and Chestnut Sts. The school faced N. Mulberry St. along Marion St., across from Shreiner's Cemetery.

Barnes' directories through the 1870s list the two buildings as Male High School (Mulberry St.) and Female High School (Prince St.)

There are no known postcard views of this school.

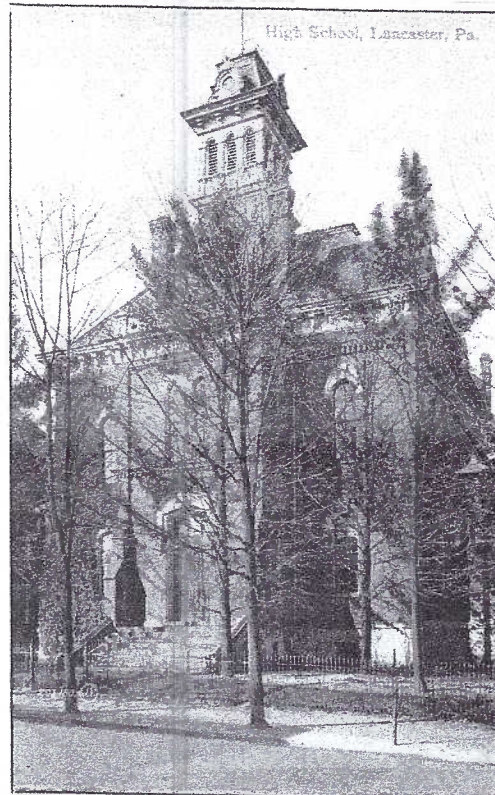


Cornerstone laying for the fourth high school.

This fourth city high school is represented on at least two postcards. A RP view is shown on our cover. This unused PC has a Velox stamp box, earliest known date being June 27, 1912. A second view seen more often is #203,150 - a full color PC by Valentine & Sons.

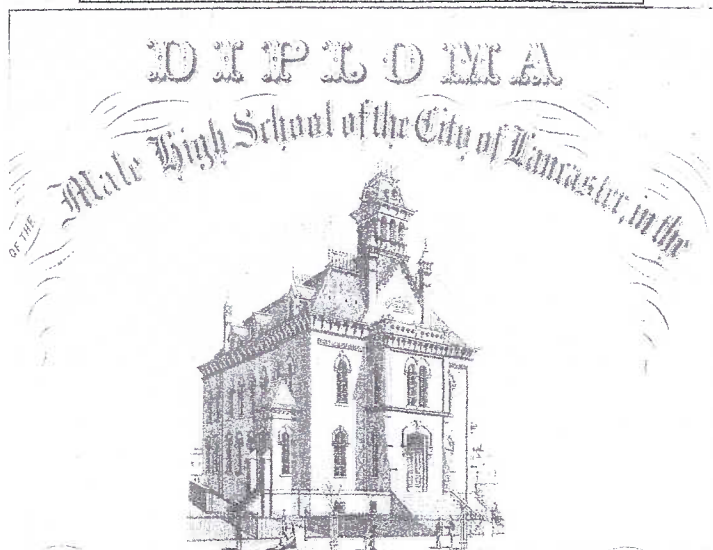
#4 – Ellis & Evans – “A new high school on W. Orange St. near Mulberry is 92 ft. by 52 ft. in dimensions and 92 ft. high from base to top of tower. It was designed by C. L. Stiles of Chicago.”

On Jan. 3, 1876 teachers and pupils of *all* city public schools met at the old high school at N. Prince and W. Chestnut Sts. and marched to the new high school along with representatives of Franklin & Marshall College, State Normal School at Millersville, judges of the county court, the mayor, and city council members for the formal dedication.

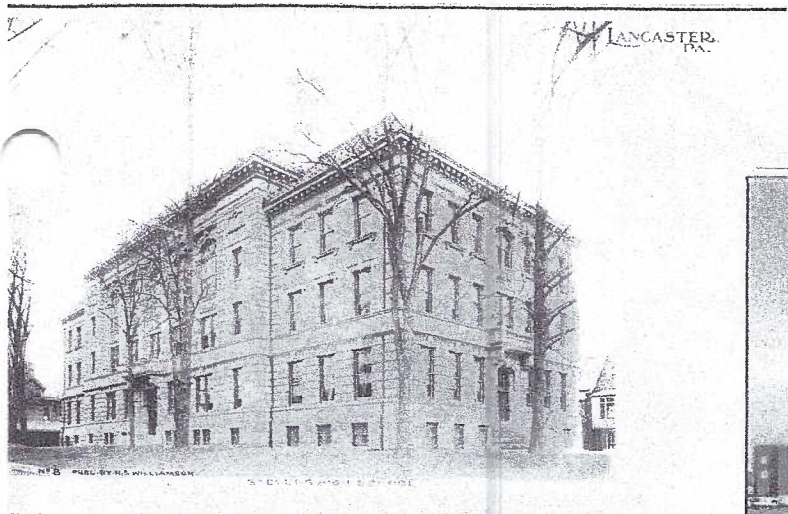


This building faced West Orange Street with N. Arch St. to the east side and St. John's Reformed Church on the west side, at the corner of Orange and Mulberry Streets.

Polk's 1898 Directory lists a “Boys H.S. Annex” on N. Ann St., corner of Grant. Was this a temporary need for over-crowded conditions? The site is also listed as an elementary school.



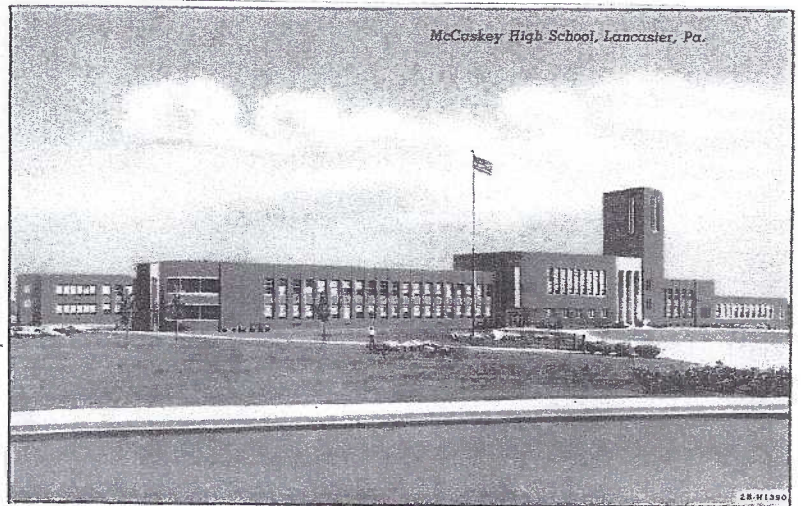
A diploma for Lancaster's fourth high school.
(Note – It's called the Male High School.)



Lancaster's fifth high school.

#5 - Stevens High School was dedicated May 27, 1904, architect was C. Emlen Urban; contractor was George Gesell. The 3-story building cost \$215,000 (an extravagant amount in 1904), including \$23,000 to purchase the site formerly housing the Kramph mansion on N. Charlotte St. between W. Chestnut and W. Walnut Sts. A unique feature of Stevens was the third floor auditorium with stage. It seated 600 people and was painted entirely in white with French Renaissance plasterwork and fancy chandeliers with gas and electric lights.

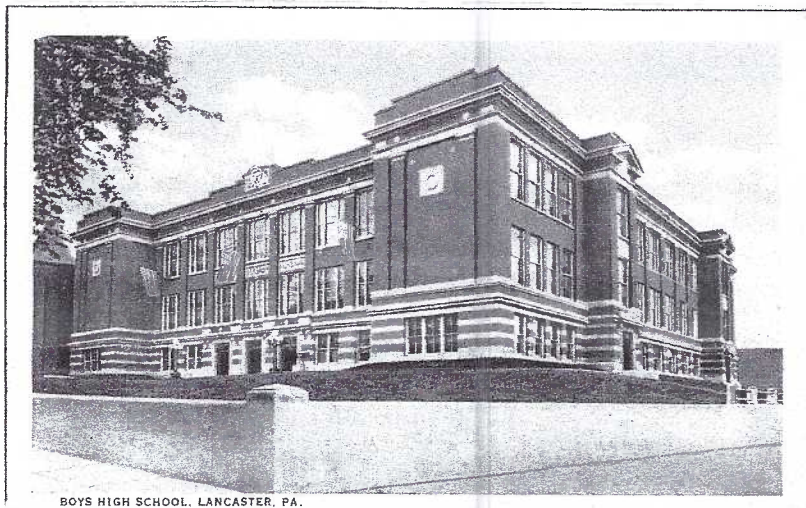
Dozens of views (divided, undivided backs and real photos) can be found of Stevens, some with local advertisements. We show #8, hand tinted and published by H. S. Williamson,



Linen view of Lancaster's seventh high school

#7 - On Feb. 7, 1938 the J. P. McCaskey High School opened its doors as "the city's first co-educational public high school" at 445 N. Reservoir St. Official dedication of the building was on May 3, 1938.. Many LCPC members attended the school and several were teachers there.

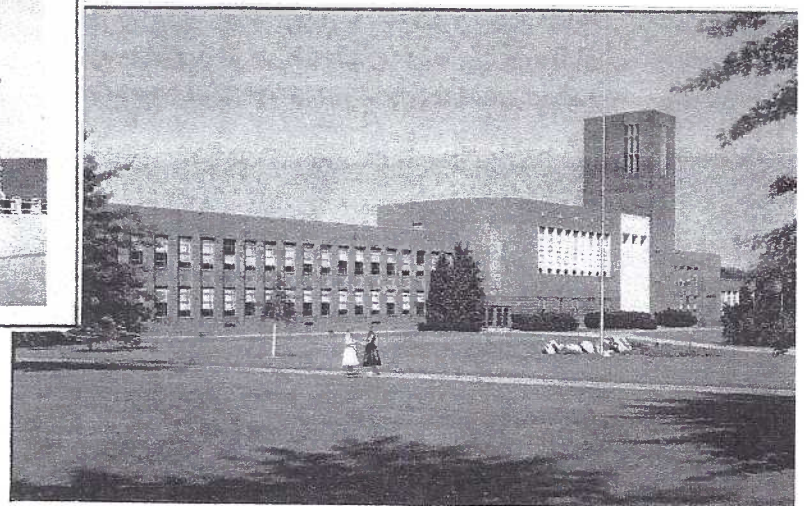
Three postcards we've seen are: #2B-H1390, a linen published by Curt Teich in 1941; #P12150, a chrome published by Mehl Advertising, York and printed by Colourpicture, and the real photo on our cover. Difficult to read in the upper left is the caption - John Piersol McCaskey High School, Lancaster, Pennsylvania, Henry V. Shaub, Architect.



Lancaster's sixth high school.

#6 - Corner stone laying for the new Boys High was Sept. 22, 1916, with Gov. Martin Brumbaugh presiding. The RP postcard shows the ceremony. In the background is St. John's Reformed Church which was later razed. Dedication was 9/26/19. The school's address was 237-239 W. Orange St., basically the same as the Old Boys High School (#4). Today the bldg. is the Fulton Elementary School.

The completed school building appears on only one postcard we've seen - white border card #A-79461 published by Curt Teich in 1919.



Chrome view of Lancaster's seventh high school

MARCH 2008 LCPC NEWSLETTER



FEBRUARY MEETING

The mild weather helped to make our annual "free for all" a success. Many members commented that it was the best one we ever had. The following members were set up and selling. Dick Bishop, Ray Bubb, The Buckwalter's, Mary Darrenkamp, The Dennis's, The Feight's, Aaron Heckler, Karl Hellman, Kerry Mohn, The Moyer's, The Rowe's, Dede Schaeffer, Al Schaub, The Schaum's, The Schurz's, Bill Seigford, Dale Schaub, Jim Ward and Merv Wenger. The room was full so hope I didn't miss any sellers. It was good to see some members that had not attended meetings for some time.

A very short business meeting was held and everyone was eager to get back to buying and selling.

The pictures above were taken by our roving photographer Doug Milliken.

DOOR PRIZES

Aaron Heckler Repro Lititz postcards
Sandra Shaub NPW postcards
Merv Wenger Booklet about postcards
Mark Arbogast \$2.00 Certificate
Barbara Heim \$2.00 Certificate
Kay Feight \$3.00 Certificate
Tom Schaum 50/50 \$28.00

**IF YOU RECEIVE A \$1.00, \$2.00 or
\$3.00 CERTIFICATE PLEASE CASH
THEM SO THEY CAN BE USED
AGAIN**

MONTHLY POSTCARD COMPETITION

TRAVELING ON WHEELS

Bryan Benner	1st	Boy and Coal Wagon
Kay Feight	2nd	3 Dachshunds on Roller Skates
Walt Mowrer	3rd	Horse drawn wagon with Cattle

HONORABLE MENTION

<i>Betty Beck</i>	<i>Cupid on Roller Skates</i>
<i>Steven Mumpert</i>	<i>Log House on Wheels</i>
<i>Dede Schaeffer</i>	<i>Bunny and chick race</i>
<i>Brian Frankhouser</i>	<i>Mennonite Couple with Ostrich Wagon</i>
<i>Jim Ward</i>	<i>Rampant Bicyclist</i>
<i>Tom Beck</i>	<i>Car Pulled by Mule</i>
<i>Ruth Moyer</i>	<i>Man Made of Wheels</i>
<i>Harold Moyer</i>	<i>My Valentine (Roadster)</i>
<i>Richard Pendergrast</i>	<i>German Tour Group</i>
<i>Sandra Shaub</i>	<i>Fulton's Paddlewheel Steamer</i>
<i>Dolores Rowe</i>	<i>Hillary says, "Get in the Back, Bill"</i>
<i>Barbara Heim</i>	<i>Bruder Organ on Tractor Trailer</i>
<i>Bud Heim</i>	<i>Band Organ on Flatbed Truck</i>
<i>Maria Schurz</i>	<i>The "Best" Transportation</i>
<i>Jere Greider</i>	<i>Modern Transportation</i>
<i>Win Schurz</i>	<i>Farmer's Transportation</i>

March Single Card Competition	A Favorite Linen Postcard
April BOARD Competition	Just for Laughs

MARCH MEETING

March 17, 2008

3 Mini Programs

Jim Brodt-Washington, NJ
Bill Buckwalter- Unidentified Real Photo Postcards
Jim Ward- Generic "Greetings from Lancaster"

MEMBER NEWS

Barbara Mowrer's father and Leighton Stover's mother passed away in the last month. Our sympathy is extended to both families. Please let me know member news so I can mention it at meetings and print it in the newsletter.

NEW MEMBERS



Anita Benner, Manheim, PA Collects Easter, Pansy and General . She is Bryan Benner's mother. Cole Nissley Hummelstown, PA. Collects Buildings and Landscapes. He is Kathy Kreider's great nephew.

Back Issues of the "Card" wanted
A member is missing the following 2007 issues. July, Sept., Oct., Nov., Dec. If you have extra copies of these issues please let me know.

2008 DUES

Annual dues must be paid by March 31, 2008. You can send payment to Richard Pendergrast 950 Willow Lakes Dr. Apt. 1-506 Willow Street, Pa 17584. Dick will also be available on meeting night to collect your dues. Please make sure you pay your dues.

SHOW & TELL

Starting with the March meeting there will be some time for members to share a postcard story. ???What was a recent exciting postcard experience???

THANKS

Thank you To Jim Ward for cover and McCaskey story. Karl Hellmann for part one of K.L.S.S. Thanks also to members that have submitted articles for future issues.

AUGUST EXPO. BOARD TOPICS

Members make the display boards for our annual Postcard Expo. We want the members to decide the topics. Enter a favorite topic and we will vote on them at the April meeting.

AUGUST EXPO. UPDATE

The Expo advertising cards have been printed. Pick up a few on meeting nights and place them in Antique shops, local store bulletin boards, etc. The dealer contracts were sent March 1st. They must be returned by April 30, 2008.

SHOW SCHEDULE

Harrisburg Postcard Show
March 15, 9-5
American Legion Hall
505 North Mountain Rd.
Linglestown, PA

MORLATTON POST CARD CLUB INC.

33rd Spring Postcard Show



Farm and Home Center
1383 Arcadia Road
Lancaster, PA 17603
(off Manheim Pike Rte. 72)



Friday, March 28, 2008 - 10 A.M. to 6 P.M.
Saturday, March 29, 2008 - 10 A.M. to 4 P.M.

No Pre-Show Buying

Admission \$2.00
(50 cents off with ad)

For more information call
Kay Feight, (717) 263-1638
Leon Rowe, (610) 444-0641

Havre De Grace, MD
April 4 & 5
10-7 & 10-4
Havre De Grace Community Bld.6

Pittsburgh, PA, April 12

Ocean Grove, NJ April 12

Allentown, PA
April 26 & 27
9-5 & 10-3
17th and Chew Streets

Hagerstown, MD May 23 & 24

Landisville, PA Flea Market
May 26

York Club Show
July 12

LCPC Postcard Expo
August 16

NEXT MEETING
MARCH 17, 2008

The auction lot of postcards looked great during the preview session. There were a few local cards, holidays, military and some real photo postcards that were looking for a new home in somebody's collection. The cards were displayed in a binder filled with clear archival pages. Each page contained only four cards, so you could take a quick look at the back to see if the card was postally used or not. If it was used, a quick glance over to the upper right corner revealed several DPO (Discontinued Post Offices) cancels. A number of the cards had prices written in pencil from several dealers. It looked like a great lot, and I decided to place a bid.

I decided upon my bid pain threshold of what I would be willing to pay for the lot. I jumped into the bidding early with an opening bid of \$10.00 for the 200+ vintage postcards. There were blissful thoughts and hopes running through my head that no one else was interested in an auction lot of old postcards at this Lancaster County auction house. BOOM! The battle was on. It was a bloody fight against several other bidders, including some "so-called friends" from the LCPC. When the gavel sounded, I was the winner of this postcard lot. et. As Jim McKay used to say during the opening segment of *ABC's Wide World of Sports* years ago "The Thrill of Victory . . ."

That evening, I took my newly purchased treasure home to reap the spoils of the battle. I planned to keep a few postcards for my collection and prepare the rest for my resale sales inventory. When tearing down any postcard collection, I have this personal sorting system:

1. Postcards for my collection - Usually about 5 out of 100 cards.
2. Postcards for the trash can - About 3 to 10 cards per 100 depending on a number of condition factors. There is no sense in my mind to corrupt my inventory with severely damaged cards that 99.9% of my customers would never consider adding to their collections. All of us have looked through too many boxes of damaged cards.
3. Postcards for my 25¢ box. Many of the cards in this lot that were destined for this box had higher prices written in pencil on them, but I was not going to take the time to erase the former dealer prices off the backs of these postcards.
4. Postcards for my regular resale inventory. The non-priced cards were quickly priced, placed in archival sleeves and sorted into their proper category. When I started on the pile of previously priced cards from assorted dealers, the rest of Jim McKay's famous words began to echo in my head. "... and the Agony of Defeat". Just like Slovenian ski jumper Vinko Bogataj, my profit from this purchase was going to come down real hard in the final landing.

Little did I know that many of the priced cards (and ALWAYS the best cards) were etched in pencil with the delicate hand of Soviet Olympic weightlifter Vasili Alexeyev. When I started erasing the prices off the back of these cards, they revealed grooved trenches that would have hidden most WWI soldiers at the Somme Battlefield. The now erased and exposed marks of \$1.00 on dealer priced cards that I was going to sell for \$5.00 and up were impossible to cover up with a new price. Valuable DPO postmarks and cancels were rendered worthless with a few hard strokes of a pencil by a previous dealer. *Caveat Emptor*. In my next article, I will discuss proper writing pencils and types of erasers to use or not to use on postcards. Until then K.I.S.S. – Keep It Soft Stupid.

POSTCARD TERMS # 2

Divided Back - A divided back postcard has a center line drawn to separate the message area from the address side. Some early divided backs have a 2/3 and 1/3 division with the larger area for the address.

Double Backed - An additional layer of backing usually found on heavily embossed postcards which helped the sender in writing their message.

Embossed - A popular decorative process which raised and highlighted the postcard area. Mainly used in greeting type cards

Embroidered - Postcards which embroidery is added.

Exaggerations - Tall tale type scenes, many include giant fruits or animals.

Ephemera - items designed to be useful or important for only a short time, postcards, calendars, pamphlets, notices, tickets, etc.

Face or Front - For most postcard collectors this refers to the picture side of the postcard. As in the back definition many philatelic collectors consider the front the address side.

Fake Scenery - A View card of a scene which usually has wordings such as "A Scene Near _____" or "Greetings From _____".

Franked - A mark or signature placed on a piece of mail to indicate the right to send it free of charge.

Foxing - Spots on paper surface caused by mildew.

Gelatin Finish - A colorless or slightly yellow, transparent, brittle protein formed by boiling the specially prepared skin, bones, and connective tissue of animals. This finish leaves a shiny attractive surface although very delicate and usually seen with cracks.

Folder - Sometimes called Vacation Folders these were souvenir mailers with postcard views in an accordion pleated arrangement.

Golden Age - Postcards from 1898 to 1918.

Government Postal - Postcards that have a preprinted stamp on the back. These were very popular with early advertisers as the cards were purchased for the cost of the stamp value.

Greeting Cards - Most collectors refer to this term when describing birthday and holiday type postcards.

Grus Aus - German term for "Greeting from".

Hand Painted - This refers to postcards which the color has been added by hand.

Hold to Light - These postcards when held up to a light create a different view, such as a day view of a building to a night scene with the windows lit up. Highly popular and collectible.

Installment - A series of postcards with bits of the picture meant to be sent consecutively until the entire scene or topic is complete.

Large Letter - This covers many time periods. Early cards usually are names, widely popular linen period are locations.

Lenticular - This type of post card shows one scene than another when viewed at a different angle or moved.

Linen Postcards - Postcards of the 1930's to 1950's which have a linen embossed texture and usually bright vibrant colors.