

THE CARD – Vol. 17, No. 12 Issue 204 December 2006

Monthly Publication of the Lancaster County Postcard Club, Lancaster, PA.

Next Meeting: Mon., December 18, 2006. Farm & Home Center. Holiday Party, Potluck Dinner, Program- 6 p.m.

Yearly membership is \$10 (\$5 for each additional member at the same address.)

Membership chair: Betty Beck 11 Cinder Hill Rd. Lititz, PA 17543

Club/editors address: LCPC c/o Bryan Benner 127 E. Clay St. Lancaster, PA 17602

Club website: www.playle.com/clubs/lancaster or Google search: Lancaster County Postcard Club



Happy Holidays!

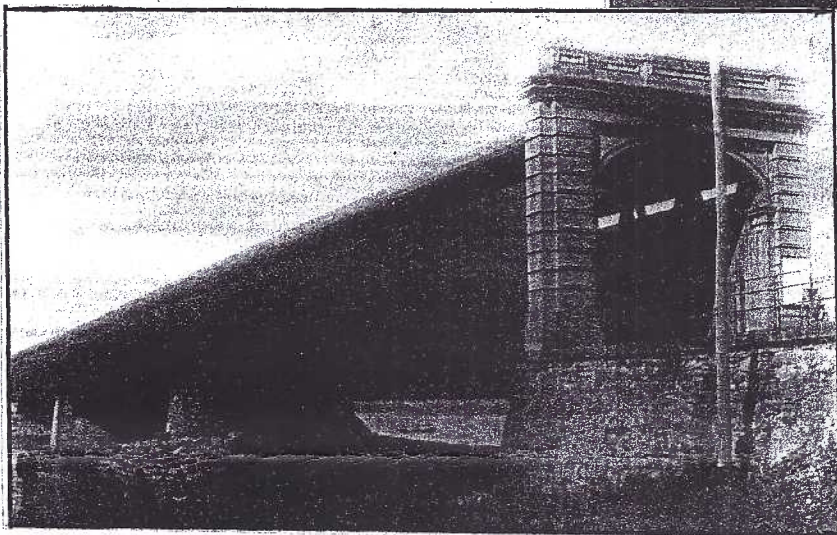
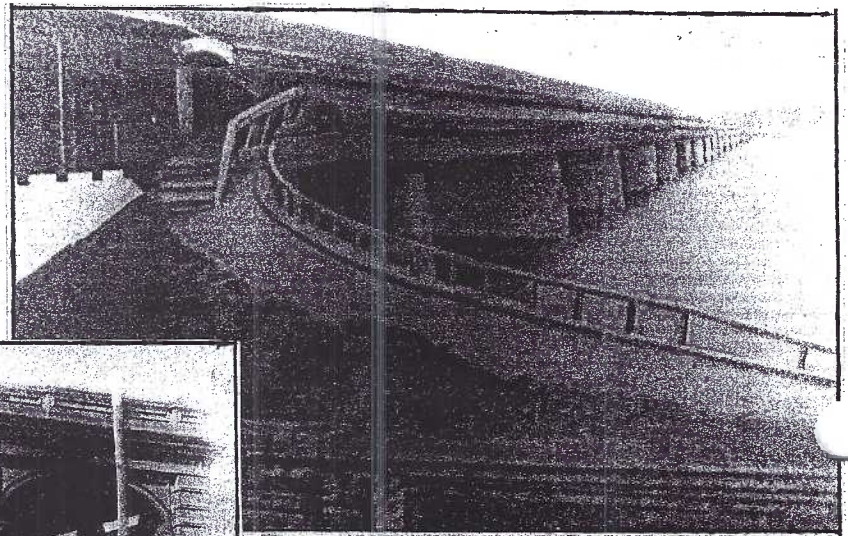
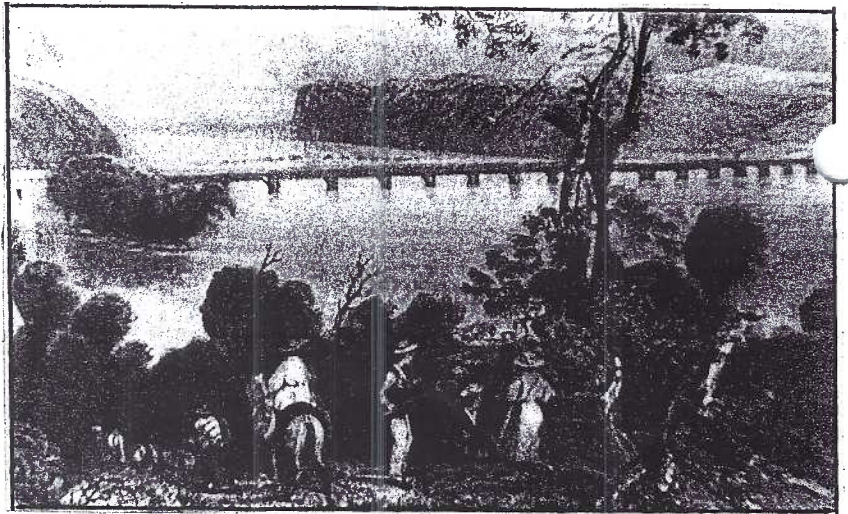
These Christmas postcards are from two sets featuring our four-legged friends and wishing us Christmas greetings. They have gold borders with holly and mistletoe framing the animals. They are marked 'Printed in the United States of America, Xmas Dog Series' (or Cat for that series) They are simply marked with a stylized 'B. Co.' with no further indication of publisher or printer. Only one of these cards was postmarked, and it was December 23, 1911.

The Six Bridges Crossing the Susquehanna River Between Columbia & Wrightsville, Pennsylvania

By Bryan Benner

There have been six bridges built between Lancaster Co. and York Co. between Columbia, PA on the Lancaster side and Wrightsville, PA on the York side. There is a new set of postcards depicting all six of the bridges. The set is black and white and on perforated paper which is accordion folded, coming in a plastic sleeve. They were made by a company which identifies itself on the back of each card as 'A Time Forgotten Photos, Vintage B&W Photos Created From Negatives.' I picked up my set at the Burning Bridge Antique Shop in Columbia, PA. Each card gives a brief historical fact about the bridge depicted on the front.

The first card, which is from a painting shows the first bridge to cross the Susquehanna in Lancaster Co. It was built in 1814 of wood and was destroyed by mammoth chunks of ice from a bad ice flow in 1832.



This resulted in the construction of new piers and a new wood-covered bridge that is shown on the second card. These piers are the same stone piers you see today in the river with nothing on them. This bridge is the bridge which was famously burned down to prevent the Confederate Army from crossing the river and getting to Harrisburg, the state capital, as was their plan. It was burned June 28, 1863, and the Confederate Army went west to the battle at Gettysburg in early July.

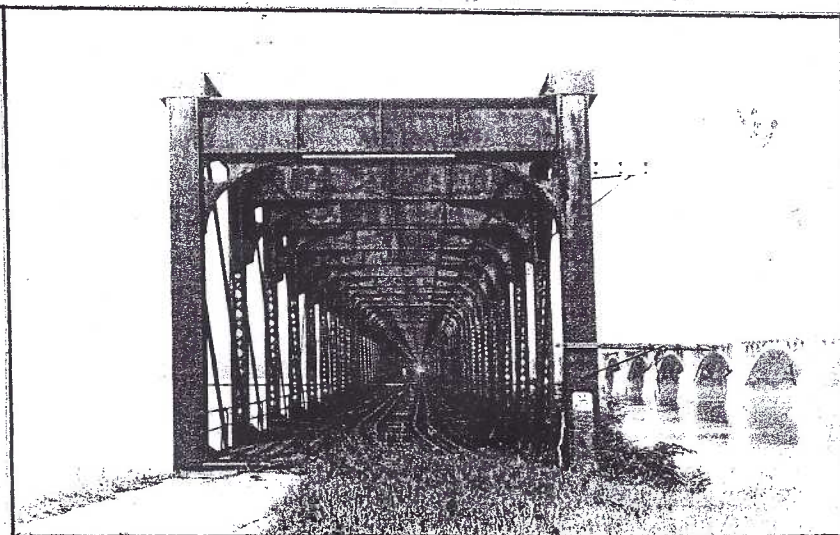
About the cards

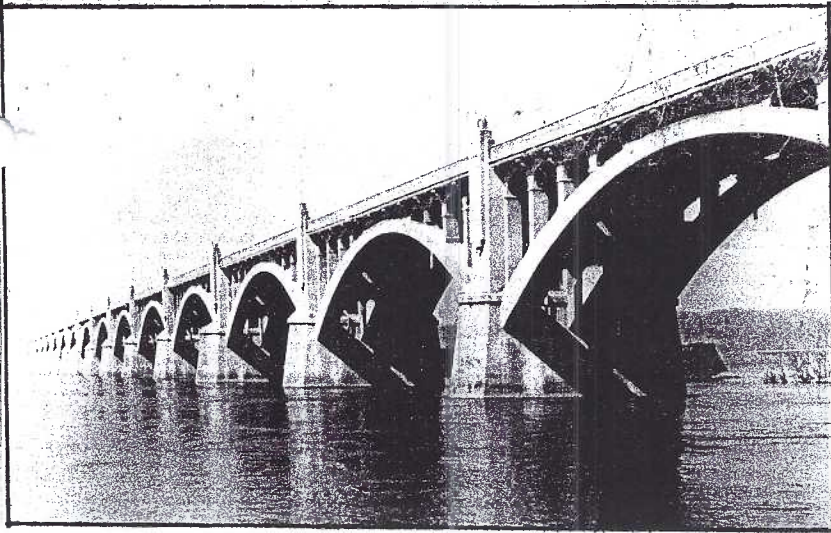
Top right: Bridge # 1, caption reads, 'The first bridge that spanned the Susquehanna between Wrightsville and Columbia, PA was completed in 1814.'

Bottom right: Bridge # 2, caption reads, 'Columbia/Wrightsville, PA bridge across the Susquehanna River was burned down during the Civil War on June 28, 1863.'

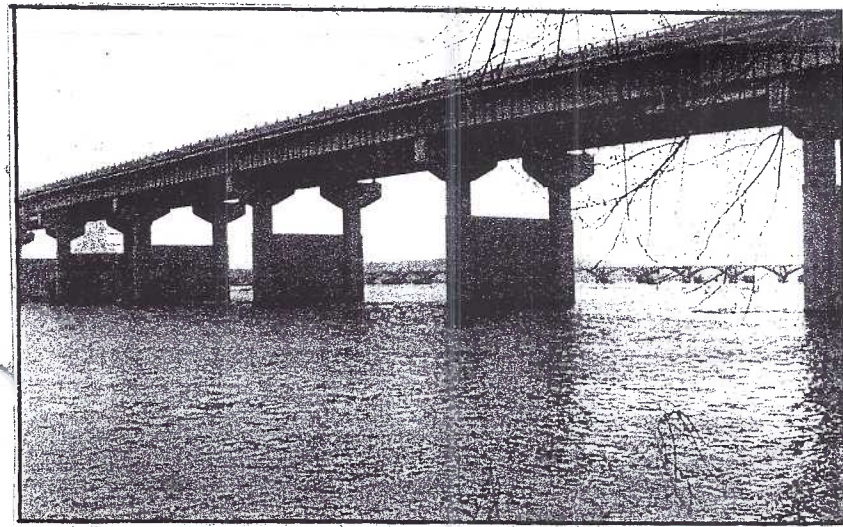
Top left: Bridge # 3, caption reads, 'Columbia/Wrightsville, PA bridge across the Susquehanna River was destroyed by a hurricane on September 30, 1896.'

Bottom left: Bridge #4, caption reads, 'Old railroad bridge between Wrightsville and Columbia, PA was opened for regular traffic on June 7, 1897.'





The car traffic increased to the point that another bridge was needed. The bridge pictured on the fifth card is known as the 'Veterans Memorial Bridge' and was once called the 'Lancaster-York Inter-county Bridge.' It now carries Route 462, but was originally Route 30 that crossed on this bridge. It is a reinforced concrete arch bridge designed by James B. Long. Its construction began in 1929 at the cost of 2.5 million dollars and was opened on September 30, 1930. It is 7,374 feet long and is known as the longest concrete arch bridge in the world. A toll of \$0.25 was charged per car until 1943 when the bridge was paid off. The bridge is on the National Register of Historic Places and is also a Historic Civil Engineering Landmark.



The iron bridge (#4) previously used was also used for a number of years but was then dismantled in 1963 leaving the stone piers we see today.

Traffic on Route 30 continued to increase and in 1972 the sixth bridge was built across the Susquehanna. This steel and concrete bridge is on the sixth card in this set and is the bridge that currently carries Route 30 across the river. Route 30 is limited access in this section and so the new bridge is the thru highway bridge and the old bridge is for local traffic. This bridge is known as the Wright's Ferry Bridge.

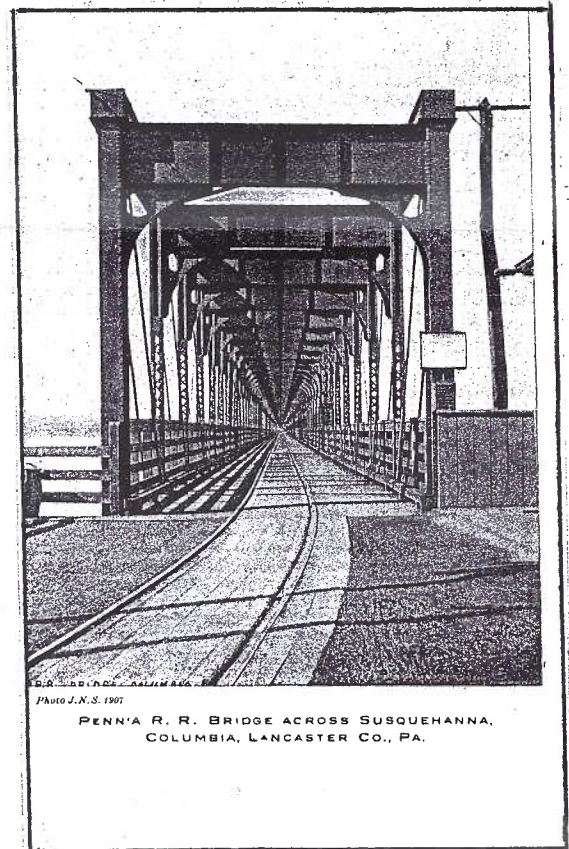
The bridge was replaced on the same piers with another wood-covered bridge that you see on the third postcard which is an actual photograph. It has a grand entrance compared to most of the local smaller covered bridges. This bridge was destroyed by a hurricane on September 30, 1896 and so yet another bridge was needed.

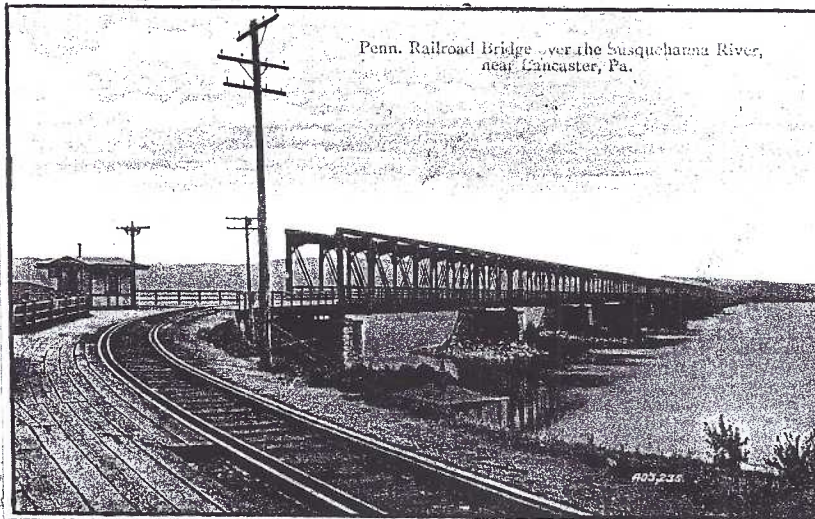
The new bridge was made of iron and is on the fourth postcard in this set. It jointly carried the Pennsylvania Railroad tracks and a roadway for horse-drawn vehicles and later cars. It was built on the same stone piers, making it the third bridge to use them. It opened on June 7, 1897.

Top left: Bridge # 5, caption reads, 'Route 462 Memorial Bridge across the Susquehanna River between Wrightsville and Columbia, PA was opened for regular traffic on September 30, 1930.'

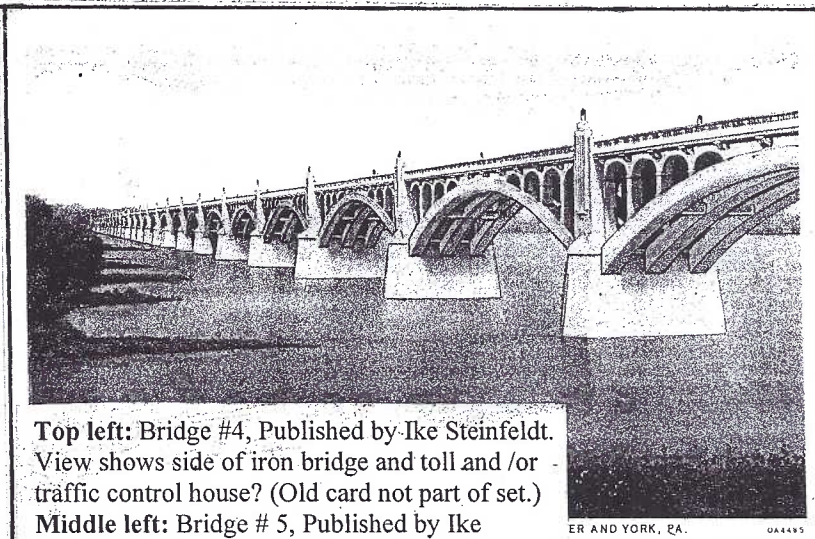
Bottom left: Bridge # 6, caption reads, 'Route 30 Wrights Ferry Bridge across the Susquehanna River between Columbia and Wrightsville, PA.'

Bottom right: Bridge # 4. D.B. Landis Pub., from 1907, Landis Art Press. Kind of neat how the bridge is so long you can't really see the end in this view. (Old card not part of new set.)





Penn. Railroad Bridge over the Susquehanna River, near Lancaster, Pa.



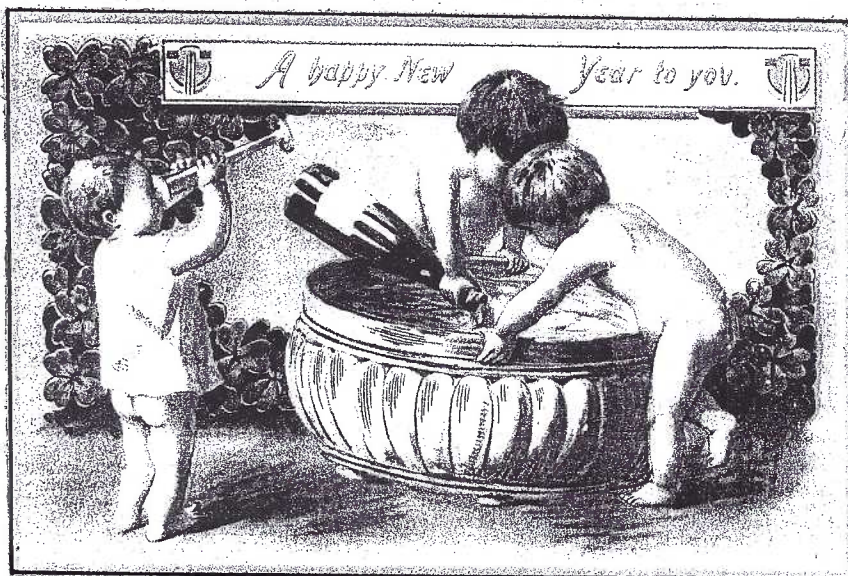
Top left: Bridge #4, Published by Ike Steinfeldt. View shows side of iron bridge and toll and/or traffic control house? (Old card not part of set.)

Middle left: Bridge #5, Published by Ike Steinfeldt, Printed by Curt-Teich Co., postmarked 1934, informative caption reads, 'The Longest Multiple Arch Concrete Highway Bridge in the World, Total overall length 7374 ft., Approach girder spans 20 ft., Width of roadway 38 ft., Width of sidewalk 6 ft., Estimate cost \$ 2,500,000, Constructed by The Lancaster-York Inter-county Bridge Commission.' (Old card not part of set)

ER AND YORK, PA. 04445

Bottom left: Tuck # 133, is one of the many colorful illustrations in Postmarked Yesteryear.

Bottom right: Max Ettlinger Series 5226, circa 1907, Signed by Louis Wain. Santa Cat sits on a London chimney top in a card that illustrates Postmarked Yesteryear.



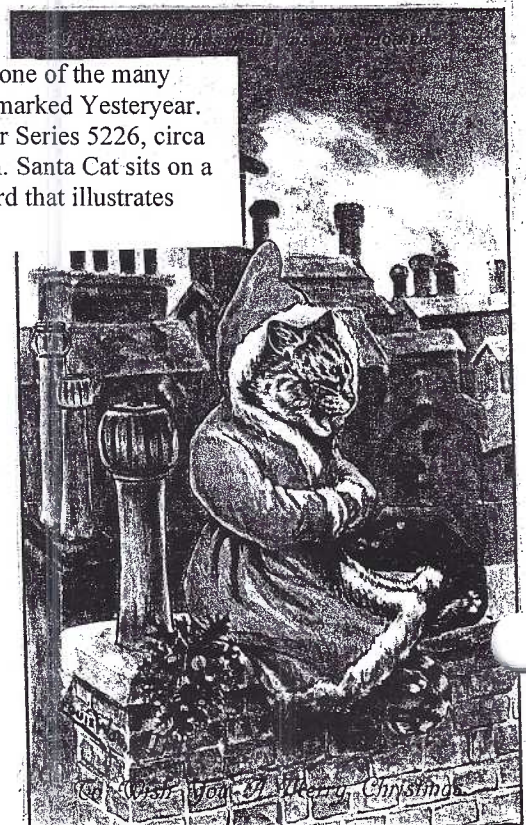
Library Highlight

POSTMARKED YESTERYEAR – ART OF THE HOLIDAY POSTCARD by Pamela E. Apkarian-Russell

From naughty gnomes and dancing pumpkins to rabbits driving cars, postcards have had a unique visual appeal like no other art form. Before the telegraph and telephone, postcards were the primary form of social communication. Selected by senders for their charm and attraction, greetings were received from far away celebrating every major holiday. Today these postcards are treasured artifacts as well as important historical documents from around the world.

The author memorializes the artists while tracking the progression of time of this simple but elegant form of communication. Her research of the artists and wide array of subject matter produce a compelling and unique art history told here for the first time.

Please call Carol Giona if you would like to borrow this delightful book.



Merry Christmas Mystery Solved

By Jim Ward

Horse-drawn vehicles on postcards are popular collector items and snow adds that extra touch to the scene. For me the Merry Christmas greeting across the upper face of the view rang a bell. Many mounted letter carriers gave postcards to their route customers. and even though his wagon lacks the U. S. Mail that emblazoned so many wagons, this might just be one.

On the reverse, penned in the Address column is "For J. E. Musser & Family, From" followed by a large rubber stamp that reads "Arthur A. Offner." Whoa! Now here could be a problem - not with Musser, that's a common Lancaster County name, but Offner, I don't think so.

To the directories.

A J. E. Musser lived at RD #5, Lancaster. In 1910 this included Route #23 and the village of Eden, a pleasant trot from Lancaster City.

The 1919 directory *did* list three Offners, all living at 538 W. Lemon St. Arthur boarded there, and so did Frederick. Kate had a grocery at the address and Geo. Smithgall ran a drug store at 536, across Pine St. from Kate's grocery. This should locate the neighborhood for our readers familiar with the city. It also reminds us that there's no way a large building like we see behind Arthur's wagon was ever at the intersection of Lemon and Pine Sts., neighborhood of Victorian row homes.

More study necessary.

With a strong magnifier we can see a tall narrow sign behind the steel lattice screen in the left hand window. It says "Picture Framing." Now we're getting somewhere!

As Hercule Perot was apt to say "Let the little grey cells go to work." Think picture taking, picture developing, and picture framing in Lancaster and there can be only one answer - Darmstaetter.



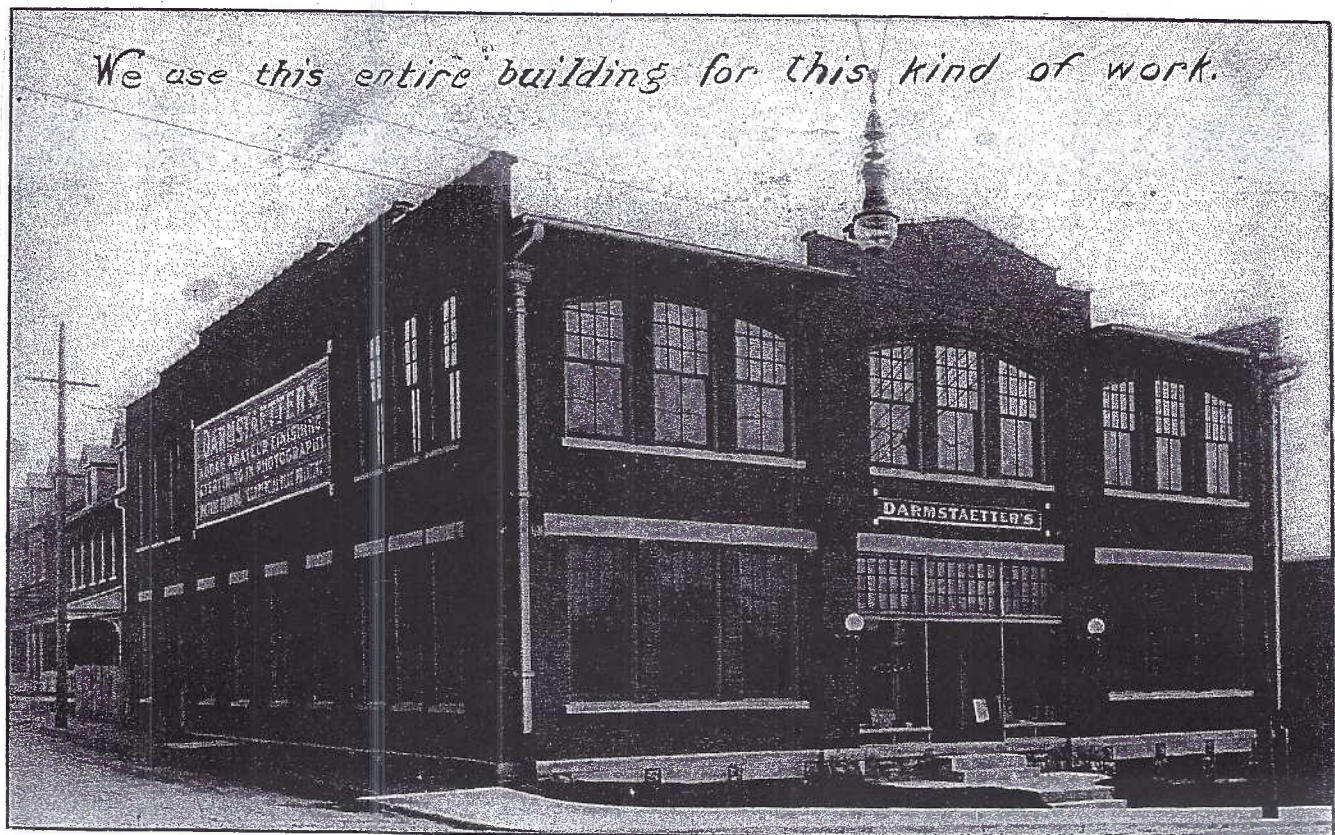
Under "D" in my City Business section are a few postcards that Darmstaetter's produced to advertise their retail sales. Also (I considered a great find at the time) is a view of their large photo developing plant and warehouse on S. Lime St. at Green St.

Counting the panes of glass above the entrance on each card and...they match! So does the stone foundation to the left of the entrance steps.

Arthur's Christmas card order is filled.

Can we conclude then that, after requesting a Christmas postcard order, Darmstaetter's told Arthur to stop by some day (on the way to work?) and have him and his rig photographed in front of their plant. "And why not come when there's snow on the ground, it'll lend Christmas spirit to your card - and remind them that you get the mail to them through all kinds of weather!"

Merry Christmas for Arthur and me and everyone associated with *The Card*.



CLUB PAGE

NOVEMBER MEETING

by Dick Pendergrast

A good number of members participated in the program on "Hometown Views" Bryan Benner showed an early view of the hospital where he was born. Ruth Moyer had a view of her own grandmother's house. Other cards ranged from Lancaster County to Pasadena, California. As this program seemed so well received we will try a similar program next year with another subject.

Subject of the competition was "Harvest", a board. The winners were:

1. Jim Ward – "Harvest Beauties" – cards by Winsch
2. Harold Moyer – "A Huge Harvest"
3. Ruth Moyer – "Harvest Scenes Around the World"
(She says she can never beat Harold!)

Walter Mowrer won the door prize for the night and Mike Middleton won the 50-50

The nominations for officers for the year 2007 were also presented at the meeting. They are:

President – Al Schaub

Vice President – Jere Greider

Secretary – Gisela Withers

Treasurer – Barabra Mowrer

Board Members for 2007-2008 – Betty Beck, Joseph Myers, Dick Pendergrast

Voting will be held at the December meeting.

DECEMBER MEETING

Our regular December meeting night will be the annual Christmas party. Dinner will be served at 6:00 PM on December 18 in the Farm and Home Center. Everyone should bring a pot luck dish – meat, vegetable, salad or dessert and a serving utensil. The club will provide drinks and place settings. If you wish, bring some small items also for door prizes. DeDe Schaeffer will do the program entitled "Images of Christmas". The competition will be a single card with the subject "Christmas Transportation".

If you did not sign up to attend the dinner, please contact Sharon Gromis at 717-892-6864 so we may have an accurate head count

VOLUNTEER POSITIONS AVAILABLE

As indicated in our last newsletter, three volunteer positions shortly will become available. We still need someone to assume these positions. Won't you volunteer for one of them? They are:

Librarian and Competition Chairperson. These two positions become available the beginning of the year. See the November Card for the duties of these jobs.

Membership Chairperson. This job also was described in the November Card. It is scheduled to turn over in June 2007, giving a new volunteer time to learn the duties during the membership renewal period of March to June

BOOKS FOR SALE

Information on two new books for sale was presented at the November meeting.

Illustrated Historical Atlas of Lancaster County – contains a reproduction of the 1899 Atlas of Lancaster County and is illustrated with more than a dozen pages featuring old postcards of the county. This book is available for \$49.95 until 12/31/06 from Fox Chapel Publishing, 1970 Broad Street, East Petersburg, Pa. 17520 or by calling them at 1-800-457-9112.

A Postcard Tour of the Cocalico Valley, Volume 1 Ephrata – a hardbound 100 page book with 282 postcard views of the sights of Ephrata will be available in time for Christmas for \$27.50 plus \$5.00 shipping cost from the Historical Society of the Cocalico Valley, c/o Jim Brodt, 1203 Lincoln Heights Avenue, Ephrata, Pa. 17522. Books may also be picked up when ready from the Society library, 237 W. Main Street, Ephrata, saving on the shipping cost.