

THE CARD – Vol. 17, No. 11 Issue 203 November 2006

Monthly Publication of the Lancaster County Postcard Club, Lancaster, PA.

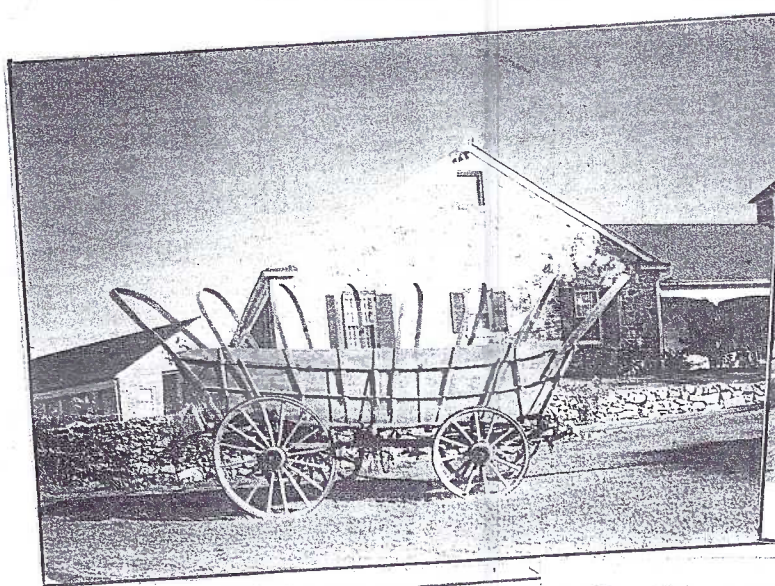
Next Meeting: Mon., November 20, 2006. Farm & Home Center. Buy, sell, trade from 5:30. Meeting at 7pm.

Yearly membership is \$10 (\$5 for each additional member at the same address.)

Membership chair: Betty Beck 11 Cinder Hill Rd. Lititz, PA 17543

Club/editors address: LCPC c/o Bryan Benner 127 E. Clay St. Lancaster, PA 17602

Club website: www.playle.com/clubs/lanaster or Google search: Lancaster County Postcard Club



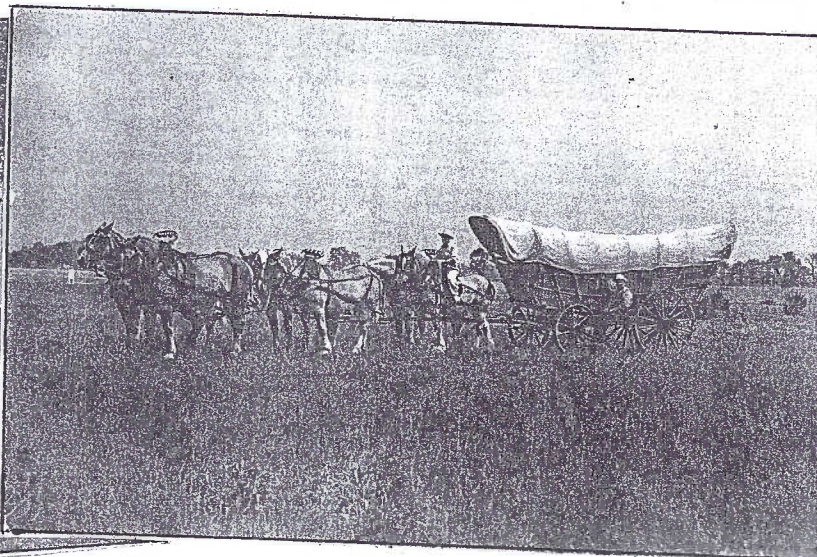
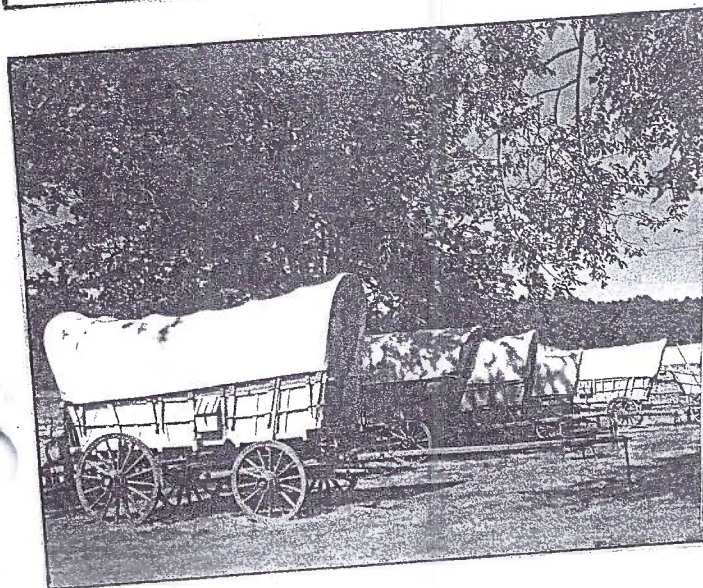
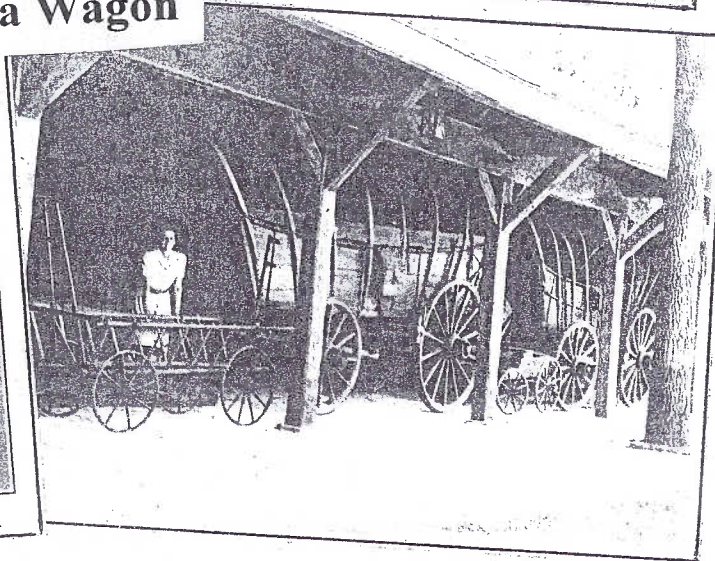
OLD CONESTOGA WAGON OF LANCASTER, PA.

The Conestoga Wagon



CONESTOGA FREIGHT TEAM.

J. G. WITMER, LANCASTER, PA.



The Conestoga Wagon

By Bryan S. Benner

The earliest history of the Conestoga Wagon is unknown. They are thought to have been built by Mennonite German settlers in the Conestoga Valley. The first known reference to a Conestoga Wagon was in 1717 in a notebook belonging to James Logan, William Penn's secretary. He bought a wagon from James Hendricks of Conestoga, PA. He later notes purchasing canvas to cover his wagon so it must have been at least similar to what we know as the Conestoga Wagon of later years.

The Conestoga Wagon was the tractor trailer of its day and was used for hauling freight. It was used to open up commerce from the East to the newly settled West, which in those days was Pittsburgh, Ohio and the Midwest. The Conestoga Wagon wasn't used much in the westward expansion over the Rocky Mountains because of its weight and size. Smaller wagons were used for the mountainous terrain. The large Conestogas were so heavy that their teams would die in the attempts to cross mountainous areas. In 1820 rates for shipping goods in a Conestoga Wagon were on average one dollar per 100 pounds per 100 miles, covering about 15 miles per day. They often traveled in wagon trains and till the railroads were developed they were the primary overland freight vehicle over the Appalachians.

About the cards:

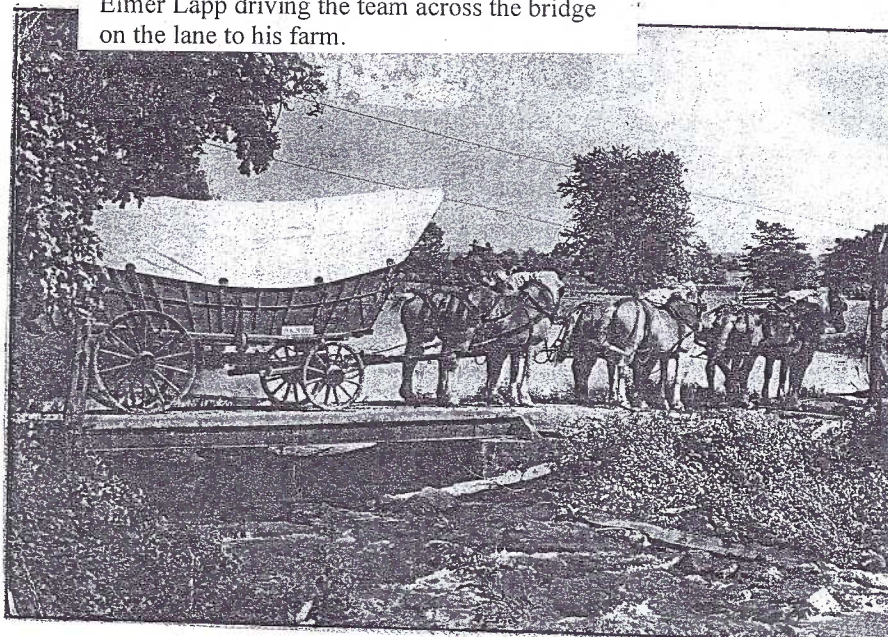
Top right: The Conestoga Wagon. This card shows Elmer Lapp driving the team with his son Evan walking beside. The lead pair of horses are Lady and Barb!

Below: This is a blotter card which is from the mid 1950's. The photo is by Edgar Sachs (Lancaster Newspaper Photographer) and was used on a Stel-Mar postcard as well. It shows Elmer Lapp driving the team across the bridge on the lane to his farm.



The Conestoga Wagon has a distinctive design. Of course, no two are exactly alike because they were all handmade in the days before standardization. The common elements for these wagons are their graceful curved lines. The bed was curved to the center to keep barrels and other freight from shifting on hills. The curved staves on the top to hold the canvas swung out to keep the goods inside dry. The Conestogas have a common color scheme of Prussian blue for the body and vermillion for the running gear and wheels.

There are a number of Lancaster County postcards which feature Conestoga Wagons. Conestoga Publishing Co., Landis Art Press and L.B. Herr all published early 20th century cards along with others. James Hess, Stel-Mar (Marshall Dussinger) and others published the mid-20th-century chromes of the wagons. All the photographs that I've seen from this period that have the wagons hitched up have featured Elmer D. Lapp of Pequea Valley Farm and his teams of Belgian horses.



Picture of the Month

Above line is set in 18.pt. Karnak

CONESTOGA WAGON

This wagon was recently reconstructed and with a matched team of horses made a memorable trip to Wheeling, W. Va. Early travelers used this kind of vehicle as a "freight train."

APRIL						
SUN	MON	TUE	WED	THU	FRI	SAT
-	-	-	-	-	1	2
3	4	5	6	7	8	9
10	11	12	13	14	15	16
17	18	19	20	21	22	23
24	25	26	27	28	29	30

INTELLIGENCER PRINTING CO.

Established 1794 — Telephone 5251

8 WEST KING ST. • LANCASTER, PA.

Elmer didn't own a Conestoga Wagon; he just used one from the Landis Brothers' collection. He kept it at his farm which is near Kinzer, PA, and would use it for parades and other public functions. His daughter Lillie Martin recounted the story that he got into Belgian horses and then in 1954 was approached by Mail Pouch Tobacco and the U.S. Post Office about driving a team of his Belgian horses for a promotional (She thought it was a postal anniversary of some sort?) from Pittsburgh, PA to Wheeling, WV. He drove his team hitched to a Conestoga Wagon, which took three weeks. He delivered mail that got a special commemorative cancellation along the way.

Elmer had a 'never used' old harness for the six Belgians that pulled a wagon. The bells that you see on all the postcards with hitched wagons were also old and were a gift. The bells were used so that on the road you could hear a wagon coming at hills and curves or wherever you couldn't see well. Each set has a different tone for a melodious sound.

The horses are very well trained. The lead horse would respond mostly to voice commands. There is a single line or jerk line to the lead horse. For right you say, 'gee' and for left 'haw.' There is no seat on a Conestoga Wagon and so the driver either walks or rides one of the horses. There is a board mid-wagon which is called the 'Lazy Board', where the brakeman sits and can brake the wagon if needed.

Elmer raised Belgians and drove them on Conestoga Wagons as well as at Rough and Tumble for horse-powered machinery all his life. He passed away last year though his sons still raise Belgians and operate Pequea Valley Farm.

About the cover cards:

Left side top to bottom:

1. Conestoga Motor Inn, Route 222, Lanc. PA By Dexter Press Inc. Pub. By Mellinger Studios
2. Early 20th Century view of a hitched Conestoga Wagon (J.G. Witmer, Lanc. PA- owner depicted?) no Pub. or Printer marks.
3. Caption doesn't say where this wagon train took place (Landis Valley Farm Museum probably?) Pub. By Stel-Mar, Photo Marshall Dussinger

Right side top to bottom:

1. 'Old Conestoga Wagon of Lanc. PA' is how this Landis Art Press card is marked. Pub. By Elvin G. Landis
2. 'Landis Valley Museum' marked card shows the wagon display sheds with Conestoga Wagons. Says 'Genuine Photo- The Garraway Co.'
3. Conestoga Wagon at the Pennsylvania Farm Museum. This card shows Elmer Lapp driving the team with Elmer Landis (a relative of the Landis Bros.) on the lazy board. Pub. By Joseph F. Morsello, Phila. PA.



L. B. HERR PRINT

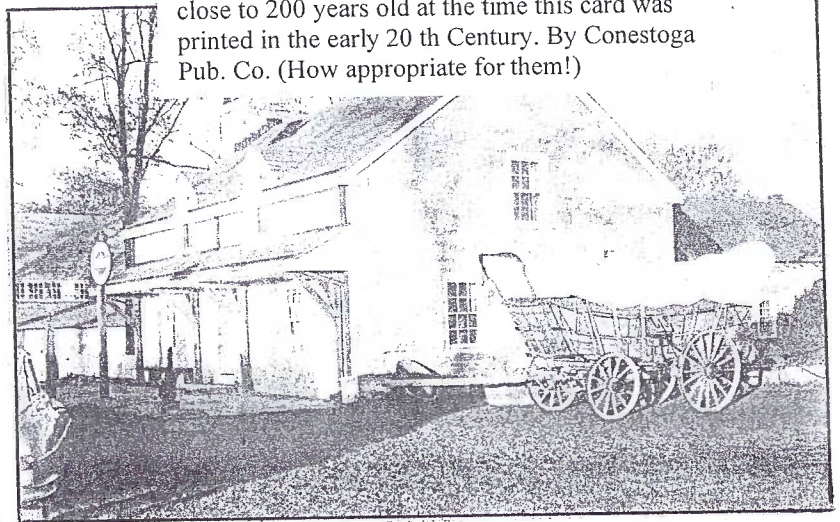
OLD CONESTOGA WAGON, LANCASTER, PA.

About the cards:

Above: Old Conestoga Wagon, Lanc. PA, shows a Conestoga Wagon on Penn Square, it is a L.B. Herr Print.

Below top: Landis Valley Farm Museum, shows wagon on grounds of museum, pub. By PA Historical and Museum Com.

Below bottom: Advertising Card showing a Conestoga Wagon, It says 'Ladies and Gentlemen for your outfit go to Star Department Store.' Some Conestoga Wagons were already close to 200 years old at the time this card was printed in the early 20th Century. By Conestoga Pub. Co. (How appropriate for them!)



Conestoga Wagon used for early traffic between Philadelphia and Pittsburgh



Ike Steinfeldt published The Pennsylvania Business College on this d/b postcard. In the late 1940s the impressive brick building was home to the Thrift Corner and then the Gas Company (UGI). What first occupied the building on the southwest corner of Duke and Orange Streets?

Local History Revealed

by Jim Ward

As Jim Rudisill is apt to do when he visits me and the phone rings or I'm finishing a small job on the computer, he leafs through PCs within reach. This visit the pile was a handful of local to-be-filed views.

Jim claims membership #66 in our club. He can modestly claim the title "Mr. York County Historian" as well. But now he can extend his history title to the Lancaster side of the Susquehanna.

Hardly had he glanced at *The Pennsylvania Business College* postcard (shown) when he asked, "Where was this grand building in Lancaster?" followed by, "It must have been a church or meeting house of some kind." Too quick to answer (as I'm prone to do) I replied, "I doubt it. I never read anything like that before."

I knew that in the last ten years the county courthouse had expanded from its location at Duke and King Street, along the second half of the block, up to Orange Street. I also recalled that before the building in question was razed it was home to the Thrift Corner in the late '40s and the gas company through the 1950s.



A search of my city directories came next. The whole way back to the 1857, the directories list St. Paul's Reformed Church at East Orange and N. Duke St. The 1857 directory also mentioned "Erected 1850." My 1843 directory (I've none for the intermittent years) lists only the "German Reformed Church, East Orange St." (later named First Reformed Ch.). This is the oldest Lancaster directory and it goes on to say that the Ger. Reformed Church "was consecrated on the 10th of June, 1736 and was the first church built in the New Town of Lancaster." (It preceded St. James Episcopal, 1744, and Trinity Lutheran, 1761).

It was time to drag out the 1899 county atlas (currently in the process of being reprinted). Here we found the answer. The map of the intersection of Orange and Duke Streets proved Rudisill right and taught me something I never knew - St. Paul's Reformed Church was *originally* on the SW corner of the intersection.

The stone edifice with its impressive Gothic tower that most of us remember was built later on the northwest corner. So old St. James (Episcopal) on the northeast corner since 1744 had parochial company for much longer than most of us realized. This old St. Paul's Reformed Church was built in 1850 on the SW corner of Duke and Orange Streets, the building later becoming the PA Business College building.

Thank you, JR, for your architectural mind and intellectual curiosity.

OWNERS OF THE
PENNSYLVANIA BUSINESS COLLEGE
LANCASTER, PA.



W. J. WADE J. M. WADE R. M. WADE

PROMOTERS OF MEN AND WOMEN

A non-postcard adv. for the Pennsylvania Business College.

CLUB PAGE

by Dick Pendergrast

OFFICERS 2007

A slate of proposed officers for 2007 will be presented at the November meeting. Positions that need to be filled are Vice President and three Board members who serve a term of two years but nominations also will be accepted from the floor for any position. Voting for officers for 2007 will be conducted at the December meeting.

VOLUNTEER POSITIONS AVAILABLE

Volunteers also are needed for the following positions in 2007.

Librarian – Manage the club's library holdings. Sign in/out books at the monthly meetings. Present occasional book reports at the club meeting or in the newsletter. The librarian has a staff who keep books at home and they bring some books to the meeting each month.

Competition Chairperson – Select a list of topics to be used for the competitions for the year. Conduct the competition each month, count the votes with the club secretary and distribute awards to the participants. All exhibitors should sign in with this volunteer when they arrive.

Membership Chairperson – Keep the membership records. Record all dues payments and information on new members. Publish the membership list. Provide info on new members for publication in the newsletter. This position will become available in June 2007 but will require some training during the period from March to June 2007.

If you are interested in volunteering for any of these positions, please contact Al Schaub at 717-560-6278 or Dick Pendergrast at 717-464-5199.

CLUB PROPERTY INVENTORY

It seems appropriate that we conduct an inventory of all physical property belonging to the club and being held by individual members. If you have projectors, screens, microphones or similar club assets in your possession, please provide a list of these items to Jim Ward at the November meeting. (This request does not include any library books or Windows II books you may have, these will be inventoried at a later date).



L & E Series 2273
By HBG(riggs)

NOVEMBER SHOWS

York International Postcard Show
York Fairgrounds
November 17, 9-7
November 18, 9-5

Morlatton Fall Postcard Show
Farm and Home Center
November 24, 10-6
November 25, 10-4

CLUB PAGE

by Dick Pendergrast

OCTOBER MEETING

Our thanks to Al Schaub for his fine presentation on Bermuda postcards.

The subject of the competitive exhibit was "Animals" on a board and the winners were:

First – Harold Moyer – "Cats in Oct."

Second – Barb Heim – "The Animals of Molly Brett"

Third – Sandra Schaub – "Africa"

Thanks also Ruth Moyer and Jim Ward.

Door prizes were won by Sharon Gromis, Harriet Snyder and Eugene Sauers. 50-50 was won by Ray Dennis.



Winter scene of Hellam Street in Wrightsville, Pa.

Publisher: Unknown

This is a member participation meeting.

Subject "Hometown Views". Bring one card to display on the projector and be prepared to describe briefly or the card will melt. If you have additional hometown cards, we will show them also if time permits. The competitive exhibit for the month is "Harvest", a board.

DECEMBER MEETING

Our annual Christmas dinner will be held on the regular meeting night, December 18, at the Farm and Home Center. Dinner will be served at 6:00 PM. Everyone should bring a pot luck dish – meat, vegetable, salad or dessert and a serving utensil. The club will provide drinks and place settings. If you wish, bring some small items also for door prizes. DeDe Schaeffer will provide the program entitled "Images of Christmas". The competition will be a single card "Christmas Transportation". Members may bring a guest to this meeting.

Please sign up for the Christmas dinner at the November meeting or call Sharon Gromis at 717-892-6864 so we may have an accurate attendance count.

NEW MEMBERS

#763 **KATE QUIGLEY**, 47 Gibney Road, Lancaster, Pa. 17602. Tel 717-464-7258 benkate@infionline.net

Collects – Cats, Niagara Falls, Stinson airplanes, Bell 47 helicopters

#764 **MARY M. HERR**, 84 W. Main Street, PO Box 612, Brownstown, Pa. 17508. Tel 717-656-2990

mherr@mennonitehome.org. Collects Lancaster City, Cats, Christmas

#765 **MARY ANN GERBER**, 12 Circle Road, Millersville, Pa. 17552. Tel 717-872-8837, MGe8597@aol.com

#766 **WILLIAM HEINAMAN**, 200 Swarthmore Drive, Lititz, Pa. 17543. Tel 717-626-4326

#767 **MARY SCHMITT**, 601 Redwood Drive, Lancaster, Pa. 17602.

REINSTATED

#9 **MERV WENGER**, 1024 Log Cabin Road, Leola, Pa. 17552

#377 **JIM KEEBLER**, 1746 Billview Drive, Lancaster, Pa. 17601

#378 **EMILY KEEBLER**, 1746 Billview Drive, Lancaster, Pa. 17601