

THE CARD - Vol. 15, No. 6. Issue 174. June 2004.

Monthly Publication of the Lancaster County Postcard Club, Lancaster, PA.

Enjoying postcards through education and entertainment.

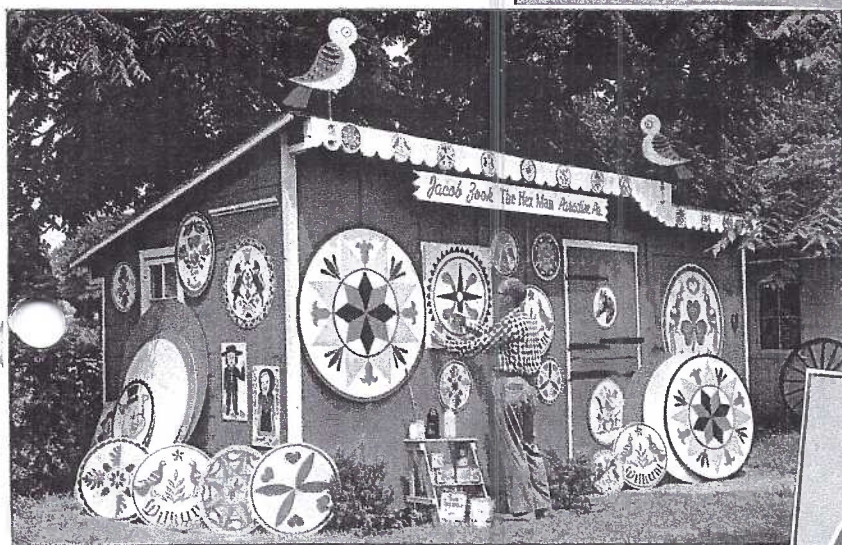
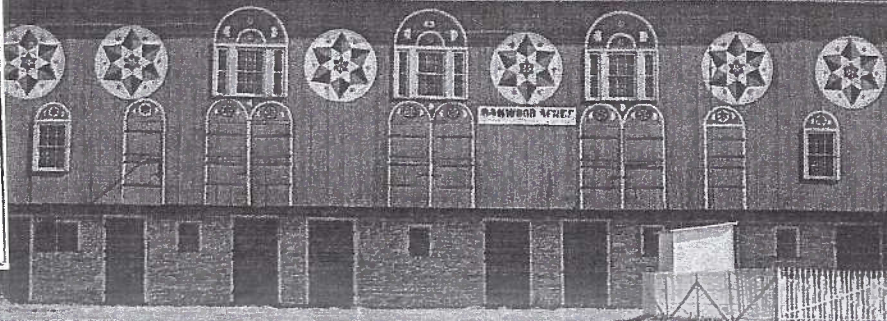
Next Meeting: Mon., June 21, 2004. Farm & Home Center. Buy, sell, trade from 5:30. Meeting at 7 p.m.

Club and Editor's address: LCPC c/o Jim Ward, 1795 Kleinfeltersville Rd., Stevens, PA. 17578-9669 or midcreek@ptd.net.

Club website: www.playle.com/clubs/lanaster or Google search: lancaster county postcard club

GREETINGS
FROM THE
Pennsylvania
Dutch Country

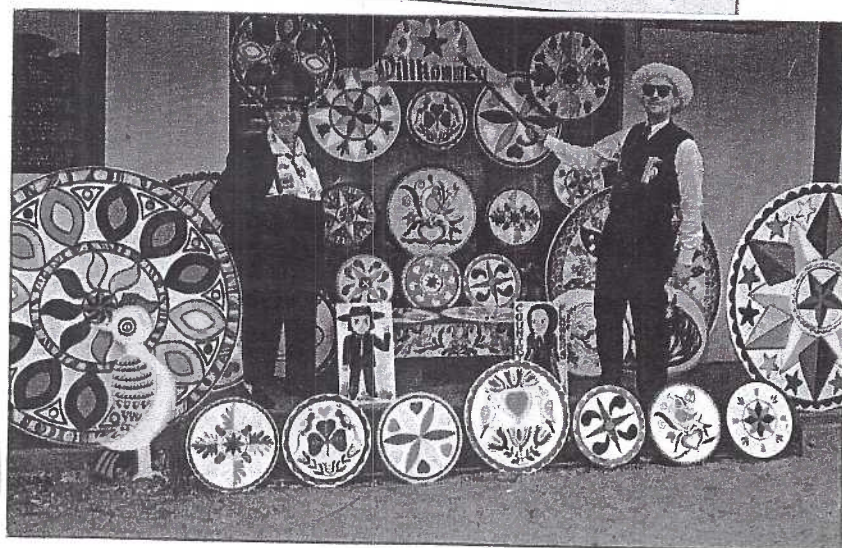
109



HEX SIGN POSTCARDS

By

Bryan Benner, LCPC #576
Story in This Issue of *The Card*



HEX SIGN POSTCARDS

By Bryan Benner

The word 'Hexe' is German for witch. Journalists and those writers of tourist literature in the 1920s gave the name to the Pennsylvania German barn decorations. The historian and entrepreneur Wallace Nutting, in his 1924 book *Pennsylvania Beautiful*, referred to them as 'Hexafoos' meaning literally witch's foot. He further declared the barn art to be symbols used to protect from evil the barn and its owner. It is from this time on that the now widely accepted stories and meanings seem to have begun circulating. Little evidence suggests that this was or wasn't the reason these symbols were used by the Pa. Germans on their barns.

The hex sign contains many of the elements often found in Pa. German folk art. The most traditional symbols have a stylized star or flower motif. Many variations now exist. Others evolved using local design elements like distelfinks and hearts among others. There are also many hex sign designs that have developed for the tourist trade with American eagles, Irish symbols and pineapples on them to name a few.

May Meeting

The Free-for-All program in May seemed to be a success, though we lacked our usual compliment of 70-75 members who regularly attend. Except for an abbreviated 25-minute business meeting conducted by Pres. Doug Milliken, the 45 members who *did* attend were buying and selling from 4:30 until 8:30 PM.

Buyers, in addition to selling postcards, offered valentines, trade cards, books and misc. paper items. The free table space was used by **Tom Schaum, Al Schaub, Jim Ward, Sandra Schaub, Ruth Frankhouser, Maria Schurz, Bob Kramer, Ruth and Harold Moyer, Leighton Stover, and Dick Bishop.**

Carol Dennis brought *Volume II of Windows to Our Past*. A list on page three includes additional members who soon will have the books available at their homes. Bernie Heisey also has books at his stand in Roots Farm Market on Tuesdays. If you have a business and would like to promote our club and our hobby, contact Ray Dennis at 290-7948.

Past President Susan Glass won \$22 in the 20/20 drawing. Carol Dennis won the door prize.

May Board Competition

Your editor must apologize for an error in April's prize listings. Sandra Schaub, not Carol Giona, was the First Place winner in the April Fool single card competition. My apology to both ladies.

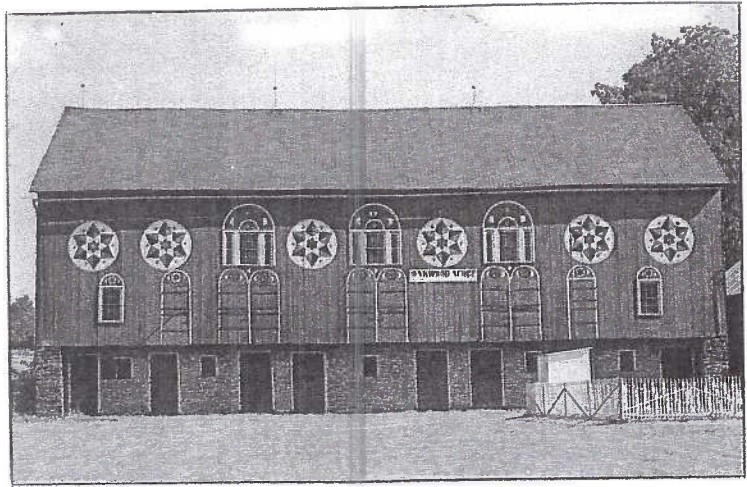
It was May FLOWERS time and six boards presented an array of color. Participants were -

Jim Ward FIRST Dad's Favorite - Edelweiss
Walter Mowrer SECOND Spring Flowers
Gisela Withers THIRD A Riot of Reds

HONORABLE MENTIONS

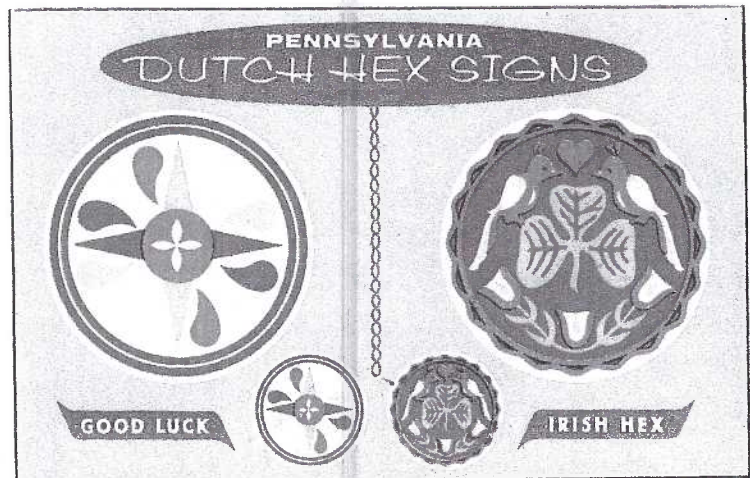
Harold Moyer Hershey Rose Gardens
Ruth Moyer Language of Flowers
Sandra Schaub Forget-Me-Not

June's competition remembers Flag Day.
Bring in a single postcard of the **American Flag**.



The designs on traditional signs are also found on fractur, furniture and other handwork of the Pa. Germans. These designs are at the midst of some controversy among scholars of the Pa. Germans, as to whether they attributed protective powers or were merely decorations painted on barns. It seems that there are those supporting each side of the controversy - either they have specific meanings, or they have only decorative purpose and meanings concocted to attract tourism.

Continued on page 3.



New and Old Lancaster PRR Stations

Railroad buff, **Bill Seigford**, LCPC #48, submitted an item to the *Harrisburg Rail Review*. An important excerpt is reprinted here-

"J. B. Phelan, Supt., on behalf of the PRR, Eastern Region, Phila. Division, Harrisburg, PA issued the following 'Notice' on April 8, 1929: Old Lancaster Passenger Station will be abandoned Sunday, April 28, 1929, after departure of the following trains: No. 18, eastward, at 12:41 AM and No. 577, westward, at 12:55 AM. All trains thereafter will arrive at and depart from the New Lancaster Passenger Station."

Thanks, Bill for your continued interest in both historical hobbies = postcards and railroads.

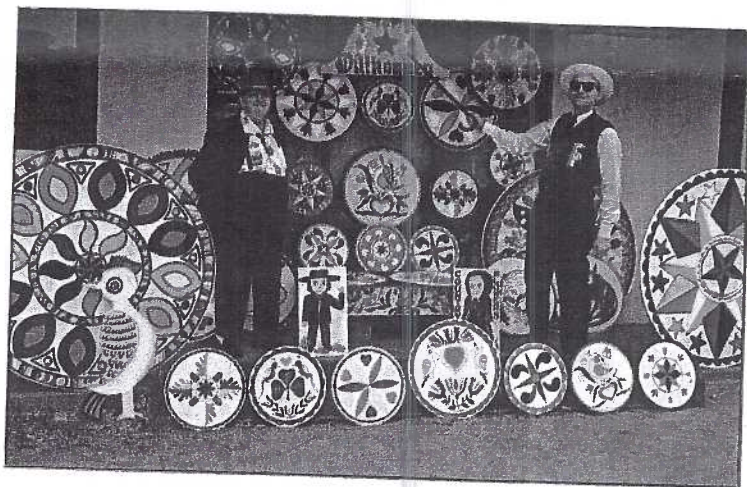
Expo Exhibit Categories

Ruth Moyer and her Exhibit Committee announce the following four categories for **Expo 2004**:
ANIMAL DRAWN (as in horse-drawn, goat carts, etc.)
HISTORICAL (events, places, people, things)
REAL PHOTO (any subject)
PUBLISHER or PRINTER (one company or person)

Details will follow in the July *Card*. Ruth will have applications at the July meeting. You can contact her at 717-336-6644 or at rsm@dejazzd.com.

What is known about hex signs is that they weren't used on barns until the 1860s when paint became readily available for barn use. The segment of the Pa. German population that painted them on their barns were the Lutherans and Reformed church members, rather than the Anabaptists, known as 'plain people'. Geographically, the main area of use was Berks, Schuylkill and Lehigh Counties with some spillage into surrounding counties, in our case, hex signs only being seen in the northeastern areas of Lancaster County.

The advent of tourism has changed what the hex sign might or might not have meant. All you need do is drive down Route #330 in Lancaster and the hex signs are everywhere. The hex sign has become a symbol that everyone recognizes to mean Pa. German. This came about from their being used on souvenirs, painted discs and a myriad of other products including postcards.



The hex sign postcards most commonly seen are photochromes from the late 1950s to the present. (Does anyone have an older postcard with a hex sign?) There are PCs with hex signs that have specific meanings for each design. Postcards of local tourist stores are often hex sign covered. There are PCs of the revivalist hex sign painters Jacob Zook and Johnny Ott who made a business from their sales of hex signs. Johnny Ott, particularly, has used the legend of meanings to the hex signs in his business and calls himself a Professor of Hexology.

Local photographer and postcard publisher, James Hess of Lancaster, issued many PCs showing hex signs. Other publishers still produce hex sign PCs. A recent visit to 'The Hex Place' in Paradise, PA turned up a number of hex sign PCs, and almost any other object you can imagine decorated with a hex sign. This use of hex signs on PCs as well as other Pa. German giftware, has perpetuated the association of the hex sign as a cultural symbol of the Pa. German.

If you are interested in hex signs, the recently published *Hex Signs, Pennsylvania Dutch Barn Symbols & Their Meaning* revised and expanded 2nd edition by Don Yoder and Thomas Graves, 2000, is a scholarly and cultural look at the hex signs. It has an interesting introduction by Alistair Cooke. Another book still found at tourist attractions, is *Hex Signs and Other Barn Decorations* by Elmer Smith with photographs by Mel Horst, 1965. It has undergone numerous reprint editions. It includes interviews with barn painters and gives you 'how to paint your own hex sign' instructions. Lots of Mel Horst's photos are included.

Cover Cards

Top Row -

Greetings from the Pennsylvania Dutch Country is #103 by Stetz Photo-Process Advertising, Allentown, PA. The PC is described as "a silk screened Penna-Dutch card."

Hex-Decorated Barn is in a series of "Heart of Dutchland" cards by Melvin J. Horst, Witmer, PA. #16132 shows hex signs on the Oakwood Acres barn.

Middle Row -

Jacob and Jane Zook - House of Crafts, Paradise, PA is #3253-C by Jim E. Hess, Lancaster. The caption reads, Jacob Zook, "The Hex Man" finishing a large 'rain' sign soon to be placed on a Penna. Dutch barn with its promise for rain during a recent dry spell. Zook's 'hexes' have traveled to the fifty states and many foreign countries.

Another Jim Hess PC, #43741-B with photo by Vincent Torora of Photo Arts, shows "a display of the styles of hex signs...used in Pa. Dutch country on houses and barns. Their present purpose is confined to the decorative."

L. E. Smith Wholesale Dist., Gettysburg, PA published *Pennsylvania Dutch Hex Signs*. The unnumbered PC features double droplets of rain, titled Good Luck and an Irish Hex, symbol of good fortune.

Bottom Row -

This Jim Hess PC, #9648C, shows five different 'hex signs' (including an eagle). It also acknowledges that the signs are for decorative purposes.

Stel-Mar (Marshall Dussinger, Lancaster, PA) published card #59689/SM-250. "Prof. Johnny Ott, Hexologist from Lenhartsville, PA and Jacob Zook, The Hex Man of Paradise, PA bring you "Good Luck Signs" for every situation from 'sore feet' to the 'farmer with unhappy pigs' to 'mother-in-law troubles'.

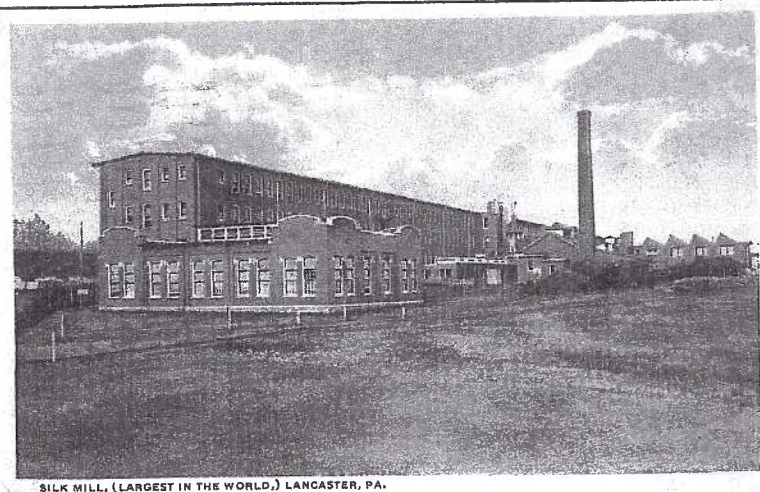
Wider Distribution of LCPC's Books

At the May 17 meeting, eighteen members volunteered to hold boxes of 15 books each in their homes. Their phone numbers and towns are included. Should you like to buy a copy of *Windows to Our Past, Volume II*, call one of these members and they'll provide their address and make arrangements for you to get the books you need.

The public pays \$30, incl. PA sales tax, for each book. LCPC members may have them for \$25 or they can return the full \$30. Pay these members for the books you need. They are responsible for each one they hold. Phone numbers are area 717 unless noted.

Betty Beck	Lititz	627-7732
Bryan Benner	Lancaster (east)	391-8127
Dick Bishop	York	854-4605
Mary Darrenkamp	Lancaster (west)	397-0556
Carol Giona	Willow Street	464-1410
Sharon Gromis	Landisville	892-6864
Bud Heim	Columbia	684-6533
Doug Milliken	Lancaster (central)	295-3135
Walter Mowrer	Columbia	684-5331
Joe Myers	East Petersburg	569-1419
Shirley Neidermyer	Lititz	626-4880
Sam Nolt	Lancaster (west)	397-1155
John Rodkey	Columbia	684-7873
Dede Schaeffer	Lancaster (west)	392-3955
Al Schaub	Lititz	560-6278
Leighton Stover	Lititz	626-4937
Jim Ward	Ephrata	721-9273
Gisela Withers	Geigertown	610-582-2131

It pays to Read the Back... Local Messages on Postcards.



SILK MILL, (LARGEST IN THE WORLD,) LANCASTER, PA.

Aug. 1921. Lanc. to Phila., PA.
My Dear Baron, It takes a lot of silk worms to keep this mill going. Your Daddy.

Sept. 1909. Lanc. to Erhart, PA.
Dear Mabel, I hope you won't disappoint me this week because I am very anxious to see you. We will go out to take pictures on Sun. From B.B. Do not disappoint me.

Jan. 1913. McSparren to State College, PA.
It's very foggy here this morning. Papa sold the pigs to Fite, took them to Eldorado last Thurs. Tommy is walking all over the desk so cannot write much. Mamma and Pap are at the barn milking. Had reviews yesterday at school.

Mar. 1911. Lititz to Monroe Lehn in Manheim,
Dear Uncle, Pop said you should bring your drawing knife along to peel those grape posts. Maybe Pop will be up on Thursday. Eva.

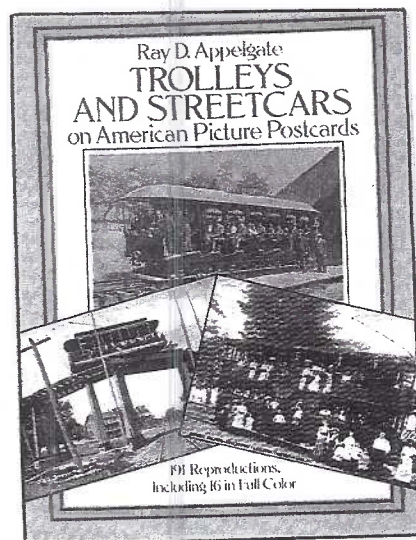
May 1910. Within Lancaster.
Dearest Ira _____, I hope to see you Thursday night and hope to have a good time. Please don't be backward that evening. Your sincere friend, Ellen _____.

SUPPLIES for YOUR POSTCARDS

New Item - Flexible Dividers with 2-tab spacing for your Postcard Boxes 25/\$4.50, 100/\$15
Sleeves (no PVC) 100/\$1.50, 300/\$4, 1,000/\$12
Semi-rigid Sleeves 50/ \$8, 100/\$15 (new, lower price)
Rigid Sleeves 25/\$9, 100/\$34
Postcard Pages (mix/match sizes) 25/\$4.50, 100/\$15
Postcards from your photos - Peelable Backs 20/\$5
At York Post Card Club Show and LCPC Expo 2004
Jim Ward 1-717-721-9273 or midcreek@ptd.net

Future Shows

July 2 -10 Brimfield, MA
July 10 York PC Club, Aldersgate Church off S. George St. near exit of Rte. #83.
July 17 -18 Allentown Great Eastern Show
August 21 Lancaster County Postcard Club's EXPO
Start your exhibit boards! Volunteer for a few hours committee work! It's YOUR show!



Editor's Note: Carol Giona heads our club's Library Team this year. She has offered to write a column about books in the LCPC library for *The Card*.

Library Highlight

Trolleys and Street Cars on American Picture Postcards By Ray D. Applegate

At the turn of the 20th Century, trolley car lines were springing up in hundreds of towns and cities across the country. They provided transportation in downtown, connected city centers with suburbs, and even competed with railroads on many interurban runs. Proud of their new trolleys and their progress, many cities seized upon another recent development – the picture postcard – to depict themselves and their vaunted new transportation networks. Postcards with pictures of trolley cars soon became very popular.

This collection comprises 191 views of trolleys and streetcars on American picture postcards. Spanning 162 different localities in all 50 states except Alaska, plus the District of Columbia and San Juan, it pictures a wide range of cars and lines.

Until the automobile rose to dominance in the 1920s, trolley lines provided an extensive network of public transportation with an efficiency that may have been taken for granted then, but envied today. Postcard collectors, trolley enthusiasts, and urban-transportation buffs will get the true flavor of the postcard and trolley era. And, since the photographs often give an interesting glimpse of Main Street, USA, this book will appeal to anyone who enjoys seeing small-town and urban America as they really were.

Please call Carol Giona at 464-1410 if you are interested in borrowing this book.

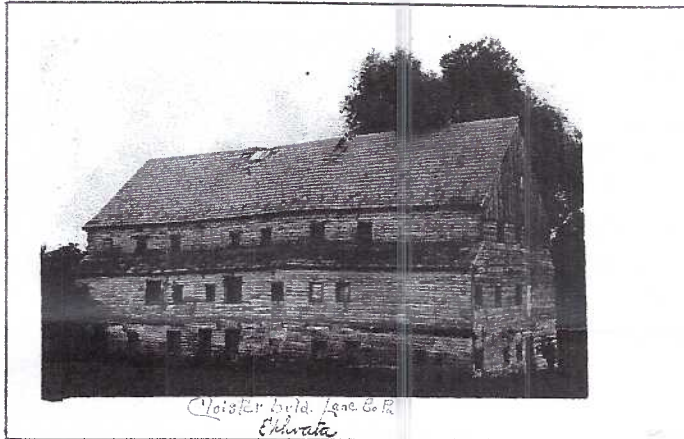
New Members

#731 Lee Dixon 2400 Basic Church Rd., Marydel, MD 21649. Ph. 410-438-3536. Dealer. This will appear to be a duplicate entry, but Lee's incorrect town was listed last month as Marigold. (Someone must have had gardening on her/his mind.)
#732 Mimi Fridie 84 Douglas Dr., Jackson, NJ 08527. Mimi is also a dealer. She attends the Morlatton shows.

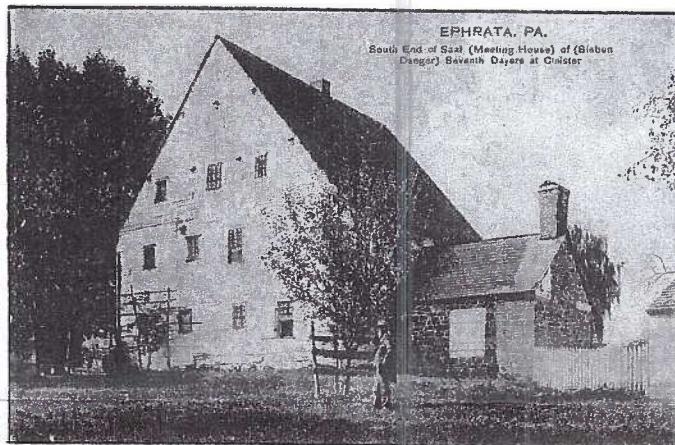
June Program

No one will deny that the **Ephrata Cloisters** is one of Lancaster County's premier historic sites. Our June program will be a presentation by Mike Middleton using several dozen postcards selected from his extensive Cloister collection. Mike will scan the history of the community showing us selected views. He'll offer his opinion, based on ten years of searching, as to which views are scarcer.

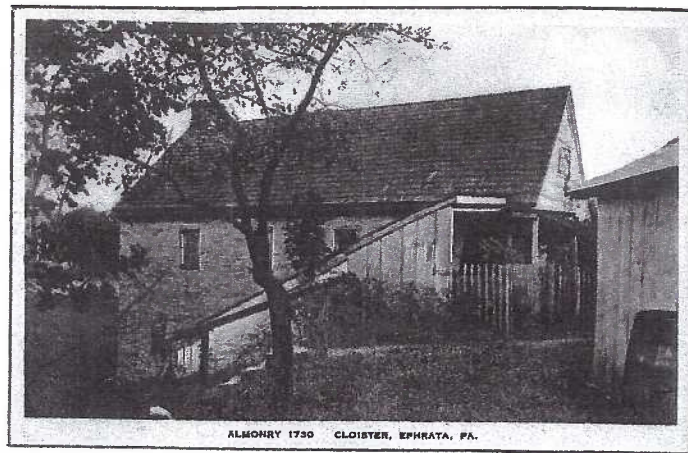
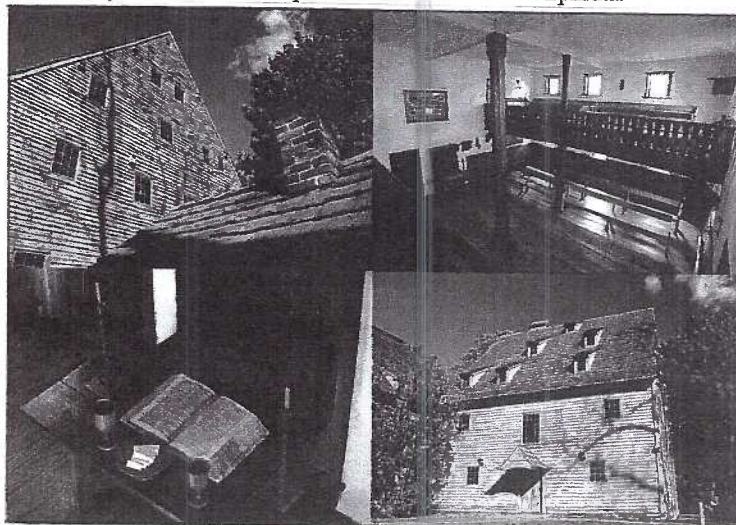
Here we offer (reduced 35%) a selection of Ephrata Cloister cards.



A real photo card, u/b with a Cyko stamp box, shows the Brother House. The caption, Cloister build. Lanc. Co. Pa., is hand printed in red. Several of us find the style enigmatic and are anxious to know the author and was he also the photographer? Most captioned views printed like this PC are from the western part of Lancaster County.



The south end of Saal (Meeting House) of (Sieben Daeger) Seventh Dayers at Cloister. Paul C.Koeber Co. printed #10419 for publisher R. H. Garver of Ephrata.



An early d/b black and white view by The Albortype Co., Brooklyn, shows the Almonry 1730.



Our final two views are by Commercialcolortype Co. They are b/w but with blue sky and white clouds (Sky-tint). Above is #49291 Rev. S. G. Zerfass and parsonage at the old Cloister built 1768. Below is #49299 Conrad Beisel house at the Cloister built 1760.



American Souvenirs & Gifts, Gettysburg, PA is one of several present day publishers of Cloister views. Exterior and interior views are seen of the 1741 Meeting House on card #HEC-3/CP9434.

The American Flag

As an inducement, an incentive, an enticement, encouragement, for you to bring along an American Flag postcard to the June meeting, we present an array of flags. Their staffs are all proudly held high by a troupe of gorgeous girls. All are images from older cards except for the girl in the middle left. In fact, that majorette-type is on a Muto-scope card, not a postcard. The older images, though not labeled as such, were known in their day as Columbia or Miss Liberty.

Help us celebrate Flag Day at the June meeting with your single postcard of an American Flag.

