

THE CARD - Vol. 14, No. 10. Issue 166. October 2003.

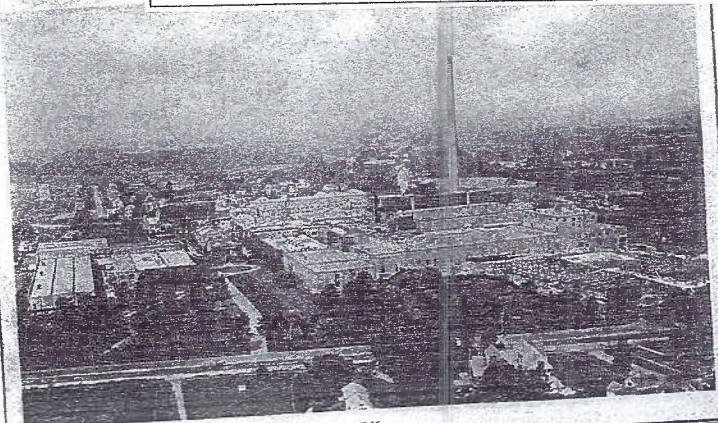
Monthly Publication of the Lancaster County Postcard Club, Lancaster, PA.

Enjoying postcards through education and entertainment.

Next Meeting: Mon., Oct. 20, 2003. Farm & Home Center. Buy, sell, trade from 5:30. Meeting at 7 p.m.

Club and Editor's address: LCPC c/o Jim Ward, 1795 Kleinfeltersville Rd., Stevens, PA. 17578-9669 or midcreek@ptd.net.

Club website: www.playle.com/clubs/lancaster or Google search: lancaster county postcard club



KITE PHOTOGRAPH OF KODAK PARK.

For No. 2 Hawk-Eye
PACK CAMERAS

50¢
POSTPAID

Kodak Film Pack

GET OUT
YOUR
CAMERA

ALL OUTDOORS IS FULL OF PICTURES

TO BE
SURE
you
get
FRESH
FILMS

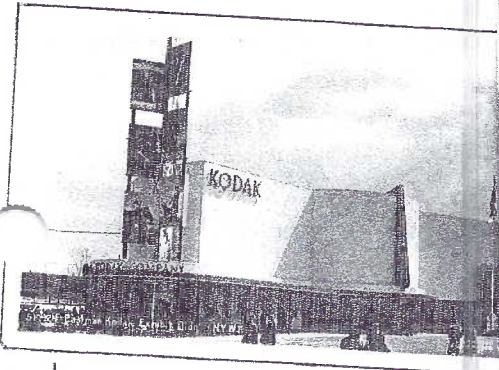
ORDER
FROM

FOX'S
San Antonio, Texas

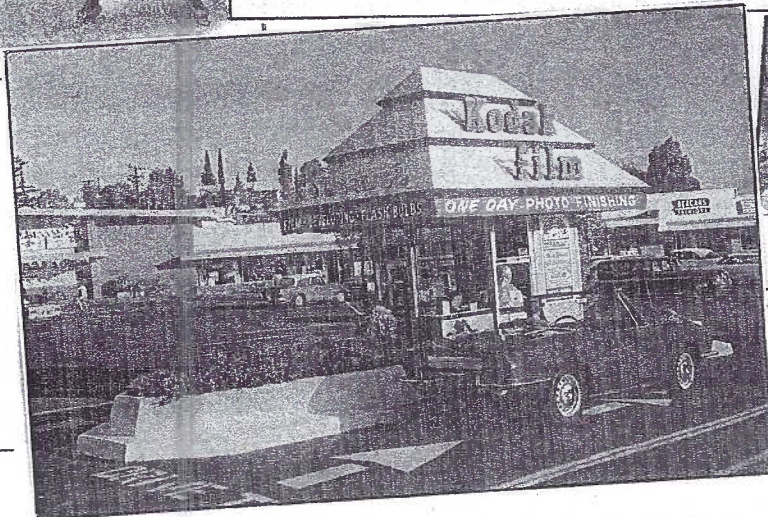
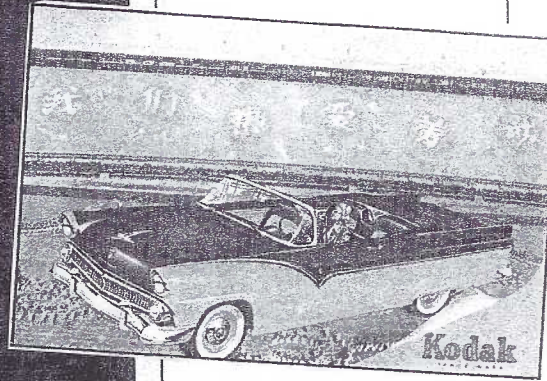
We Pay Postage
on Films

When
Money
Is Sent
With
Order

SEE
OTHER
SIDE FOR
PRICES ON
ROLL FILMS



THE KIND OF POSTCARDS YOU CAN MAKE IF YOU HAVE
A 3a FOLDING POCKET KODAK.



Visit the Kodak World's Fair Pavilion and explore the exciting world of photography!

- See the world's largest outdoor color prints
- Watch the prize-winning movie "The Starchap Eyes"
- Visit 3 theatres — over 20 exhibits
- Get general tips on how to take good pictures

Kodak Kover Kards on Page 5.



The left side of this panoramic photo of Penn Square, c. 1910, shows West King Street. On the extreme left is the Locher Building with a sign noting the Young Republicans on the second floor. Midway down the street on the south side (left) of West King Street you can see the white façade of the tall Kirk Johnson piano store. Across from it is the newly erected 5-story Hager Department Store, also with a white facade.

We all recognize two buildings that have barely changed, the old City Hall and the Central Market building. A dramatic difference in the northwest corner of the square is Hirsh & Brother, Penn Hall Clothing House on the corner occupied today by the 13-story Griest Building. *This panoramic postcard view is continued on the next page.*

A RARE POSTCARD VIEW of LANCASTER

Those of us who've been collecting postcards of Lancaster agree there are few rare views of the city more unique than this one of Penn Square during the Christmas season of (probably) 1910. Jack Loose in his excellent "Heritage of Lancaster" labels the scene as 1905, but he concedes that, on closer examination, it's probably a few years later. The original of this postcard measures exactly $3\frac{1}{2} \times 21$ ". There is no border on the original.

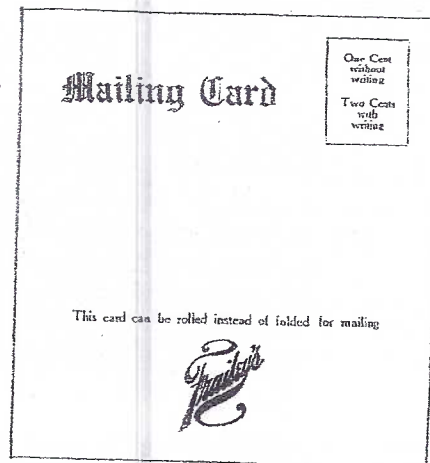
The reverse of the card, shown below, is titled Mailing Card and the name Frailey's is its only identification. Search through Lancaster City directories reveals no local photography studio or even an individual professional photographer named Frailey. For several generations there was a Frailey drug store in center city. The N. Queen Street store closed many years ago; the East King Street just a few years back. It's quite possible this might be the source of the postcard. More research is needed on the matter.

Of special note is the line above the Frailey name, "This card can be rolled instead of folded for mailing." It's hard to imagine this view on photo stock would make it though the mail today. Of course, 80 years ago fragile materials like balsa, peat, mother-of-pearl and sachet made it through the mails, so a rolled photo stock might have been a snap. Also, you'll note in the stamp box, the postage rate was 1¢ without writing (a written message, the address was obviously needed) and 2¢ should a message be added – and what a long message that could have been!

No single local collector has seen more than two or three of these postcards at the most; proof-positive the card is rare. Your editor purchased his card at LCPC member #23, Robert Vaux Roop's sale last winter. A copy of that card is used for this article. More than 20 years ago, Charlie Griffiths, LCPC member #4, knew a man, formerly from Lancaster,

who had several hundred copies made from an original. That original (which has since disappeared) had massive foxing on the surface. The stock of those copies was bought by Charlie Griffiths. It then went to Dan Good and finally to your editor who had the remaining stock of about 100 specimens until this year.

I studied the downtown stores carefully (through the heavy foxing on that first card) and concluded it was a winter scene made between 1908 and 1914. Since studying the Roop specimen, I've narrowed that span of years to 1909 or 1910 and during the Christmas season.



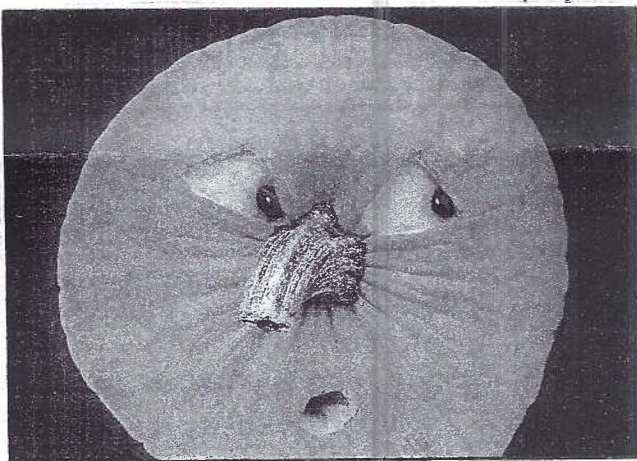


Laurel and lights decorate the Hirsh & Brother store, indicating the Christmas season. North Queen Street is nearly vacant of vehicular traffic, save for one or two autos and a half dozen wagon teams all near the curbs, a common practice, with the trolley passing down the center of the street. (A more distant trolley was in the W. King Street view.) On the east side (right) of North Queen Street is the easily recognized Woolworth Building with its twin towers.

A policeman in an overcoat can be seen near the right side of the crosswalk. Looking at the photographer in the foreground is a boy, no doubt selling newspapers as they were apt to do around the Civil War monument where crowds congregated waiting for a trolley to take them home. The man with the uniform and flat cap (right foreground), is likely a Conestoga Traction Company dispatcher. He regulated trolley traffic through the square.

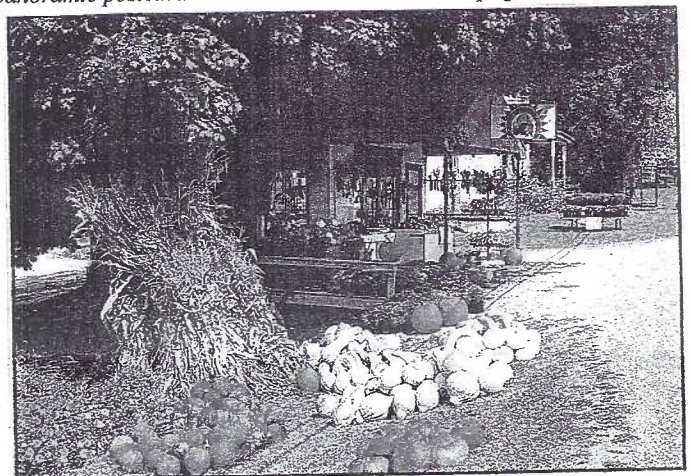
Zahm's Corner is the building topped with the Breneman Special (cigar) sign. This northeast corner has been occupied by the Fulton Bank for the last eighty years. *This panoramic postcard view is continued on the next page.*

"Ooh, boy! Everyone's getting into the act! Now I must compete with Caspers and Baby Boos!"
(From the *Play With Your Food* postcards series by Stewart, Tabori and Chang.)



Postcard Panorama View

The Mailing Card featured in this issue of *The Card* has been professionally reproduced on Kodak photo stock, full size, with a 3/8" white border added to accommodate a mat and frame. A paper copy of the reverse is included. Available at the meetings for \$6 or it can be mailed for \$7; however, it must be folded once to fit an 8 1/2" x 11" envelope. Make check to Jim Ward. Address is on *The Card* masthead.



HALLOWE'EN'S NEW FACE

Call it evolution. Call it change. But for better or worse our Halloweens will never be the same. The reduced illustration above (published by Americana Souvenirs & Gifts, Gettysburg, PA) shows a familiar site along a local back road. At least half of the Halloween pumpkins are white (even on this black and white photo the center pile is very white).

The white pumpkins come in several sizes. One grower gives them appropriate holiday names: Baby Boos - 3"x2" with a ribbed skin. Caspers - 8"x10" smooth skinned, about 10-15 lbs. Luminas - similar to Caspers, but more flattened and an ivory white.

So, enjoy your Hallowed Eve this year, with Baby Boos in your centerpiece and a big Casper at the door, but leave some room for the old fashioned big orange cow pumpkin, our favorite Jack-o-Lantern.



The little 2-story building behind Zahm's building has a billboard on the roof. It reads, "Electrical Xmas Gifts." For a few years, fresh produce could be bought at this site. In the northeast corner, facing west is Hall's Delmonico Café, then Grove's Liquor Store, Hendren's Cigar Store and finally Dr. McCaskey's dentist parlor with the Western Union office at the corner entrance. Familiar trade names adorn the billboards - Gold Medal Flour, Gunzenhauser Bakery, Hartman Hats and the Fulton Opera House (over the entrance to the Hendren building).

On East King Street an auto is parked along the north (left) curb and several horse and wagons move east toward Duke Street. The huge crowds lining the pavements from Zahm's to Western Union are most likely waiting for their trolley ride. The monument curbs in the center of the square accommodated a limited number of people. Two-story signs designate the stores of Chas. Frey Shoes and Herr & Co. on the left. On the extreme right of our panorama is the familiar Watt & Shand building. The dark "box" in the lower right corner is the CTC dispatcher's office. It was a sturdy wooden structure standing 12-15 feet high, giving him ample view of the trolleys entering and leaving the square in all four directions.

September Meeting

Sixty-one members including five guests (two became members) heard a thorough presentation of *The Wildwoods* by Jim Ristine. We very much appreciate Jim's coming the whole way from East Berlin, Adams County, after a day of teaching school.

Set up and selling were Bob Kramer, Gary Hawbecker Al Schaub, Dede Schaeffer, The Moyers, Mike Middleton, and Jim Ward.

Door prizes were won by Joe Myers and Samuel Rolon. Barbara Heim won the 50/50.

Postcard Competition

There were six boards on the subject of School and as Ruth Moyer noted, all were exceptional.

Brian Frankhouser FIRST Lancaster School Houses
Bryan Benner SECOND Lancaster City Schools
Joe Myers THIRD Cambridge University

Honorable Mentions

Norman Zimmerman Schule
Harold Moyer School Days
Jim Ward Lancaster's High Schools

Oops! Your editor mixed up the Moyers and Mowrers in listing winners of the Expo and August meeting in the Sept. *Card*. By using the first name, you have the winners. (It's not the first time a 'senior moment' is the claimed offender - nor the last.)

For October - FARMING, on a single card.

NEW MEMBERS

#710 Margaret Claire 37 Ridge Ave., Telford, PA 18969. No phone or e-mail offered. Interests are Telford, Quakertown, Perkasio, Scranton, Wilkes-Barre, Pottstown, Reading, Lansdale, Richlandtown PA, Ocean City and Ocean View, NJ.

#711 and #712 Russell and Judy Eaton P.O.Box 217, Mount Joy, PA 17552, Ph. 717-653-4709. Russell collects Great Lakes shipping, harbors, resorts, Sp-Am ships and scenes. Judy likes Indiana, Western and Colorado subjects.

The Eatons became acquainted with LCPC at Jim Morrison's postcard booth last year and just fulfilled a promise to join us after moving from Colorado. Welcome to all. **These three new members bring LCPC's active membership to 350.**

In The Journal

The autumn copy of *The Journal of the Postcard History Society* has something for everyone: chromolithographs - the first and finest postcards; pun-pal art on PCs; an early S. Dakota multi-view; comic politician and baby sitters; vacation silhouettes, an aluminum PC; roadside attractions; novelty suitcase PC; naval history and comic PCs; rebus PCs; WWII and home-mades. In addition, there are 100's of cards for sale including most of those featured in the stories. A single copy is \$2 ppd or \$7 for the year. Make check to Jim Ward (address on cover of *The Card*).

Earl Carver

1919 – 2003

Our club had a very, very active member in Earl Carver. We'll miss him. Earl was a doer and a shaker. A Methodist minister after his World War II service in the navy, Earl continued to find so many facets of life enjoyable. And he became a part of them. He spent leisure hours playing his trombone for the Columbia VFW, the Rohrerstown band, and the Mountville St. Paul's UM Church orchestra. His appointment book was a continuous line of speaking engagements and talking about postcards was one of his favorite topics. Above all, regardless of where he was, or with whom he was engaged at the moment, Rev. Earl C. Carver was a master of wit. His appreciation of humor was contagious.

Earl came to the club through an acquaintance he made with Charlie Griffiths, member #4 and co-founder of LCPC. Earl was well-known for trading churches on PCs - not just here in the county - but worldwide. Charlie made the contact that brought Earl to us, and by the second year Earl had volunteered to be our president. In those fledgling days we were a small group of several dozen collectors looking for guidance and Earl proved up to the job.

There was seldom a month passed by that he didn't participate in the postcard competition and of course, the Expo exhibits were his cup of tea. In fact, he served as the committee chair for several years.

No one in the club published as many homemade PCs as Earl. It didn't have to be a special occasion - just whenever the mood or instance came along, he made a card (and in very limited editions).

Earl recently had heart problems but appeared to be on his way to recovery. He and Helen were making plans to sell their Columbia home and move to a retirement village in Lancaster. He passed on Sept. 3, 2003.

Our condolences go to Helen and their children and grandchildren.

The silhouette was done by Jim Rudisill, member #66, when Earl was LCPC president in 1991. We've included a sampling of the hundreds of homemade cards Earl made. If he drew them himself, he signed them "E.C.C." The reverse dividing line reads, "A Carver Card."

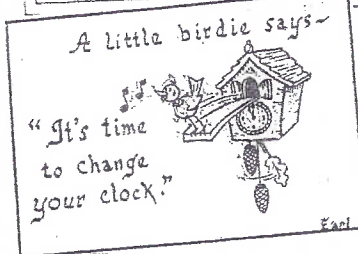
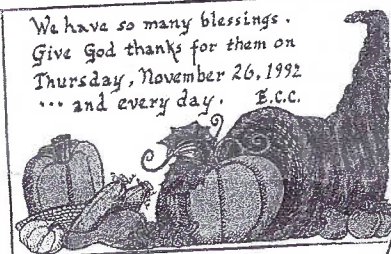
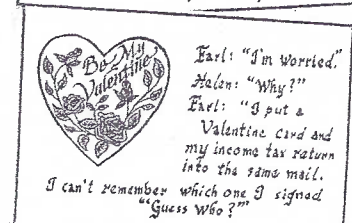
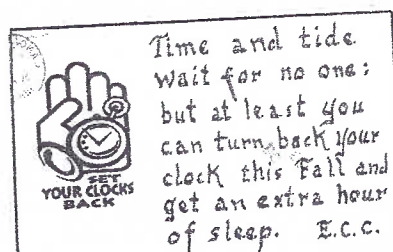
Kodak Kover Kards

Collectors are often asked, "How many cards make a 'collection'?" The answer is on this month's cover - sometimes just a handful of postcards. *Cameras on Postcards* is a popular subject to collect. Much harder to find are specific types of cameras. Combine a specific camera subject and inject a few hard-to-find *Advertisements* and you have a dandy, but small, **Kodak Kamera Kollektion** - our October Cover Cards.

Full sized center card: A shoemaker serves as the subject for the amateur photographer who might use a 3a folding pocket Kodak. The card reads on the reverse, "The No. 3a Folding Pocket Kodak. Price £4 10 0. May be obtained from all Dealers or Kodak, Ltd., at 57-61 Clerkenwell Road, London, E.C." Unused.

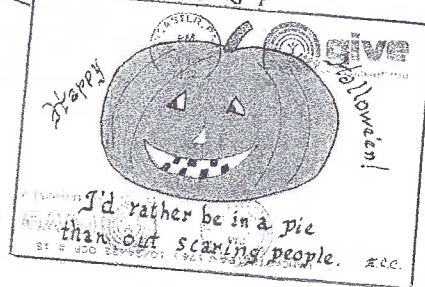
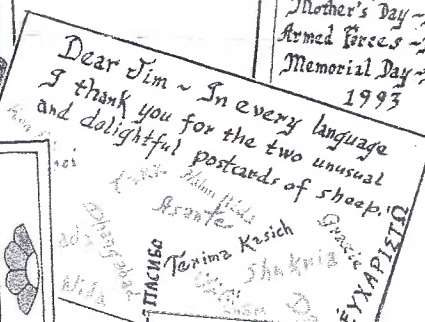
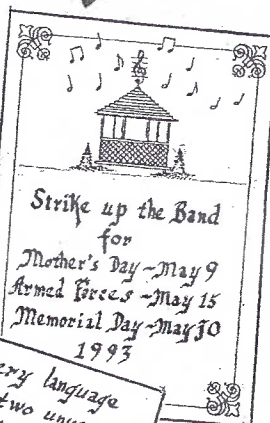
Left column: Kite photograph of Kodak Park. Eastman Kodak Co. Exhibit, Rochester Industrial Exposition, 1910. Used, no PM. Was a kite actually used??

B/W photo PC of the Eastman Kodak Exhibit Bldg., New York World's Fair. (1939) #5F-24. Unused.



THE CARD October 2003 pg 5

ST. PATRICK'S DAY
MARCH 17



"See the Kodak maiden, See the silly chap; He has lots of money, So she has "a snap!" From the Embossed Comics series by Julius Bien. PM Mt. Gretna, July '08.

"Dear Fotomat Customer, Your movie is ready and you may pick it up at your convenience. Your Friendly Fotomate, Linda." PM in Levittown, PA, Feb. 1970.

Right column: The front of this colorful (predominately Kodak yellow) postcard can easily be read. The reverse has a pre-printed address - "Rush to The Fox Co., San Antonio, Texas." The message portion is an order blank for choosing different size film rolls - #120, 116, 127, 122, 124 and 130. These numbers should conjure up memories for those old enough to remember how we'd buy the wrong size film and a trip back for the right size. Films were "finished in 3 hours." You could also request fast COD delivery.

The Carioca Novelty Co., SF, Calif. featured a rag top Ford Fairlane on this colorful 1978 issue. Unused.

A huge Kodak World's Fair Pavilion was featured on this 1964 card published by Fascolor, Inc. of Rochester, NY. Dexter Press printed #96384-B. Unused.

LCPC AUCTION #33

Monday, Oct. 20, 2003

It's unusual for us to sell so many non-postcard items, but we were approached recently by a long-time member to do just that. Bill Wolfersberger, #256, a faithful member for many years, is cleaning his Virginia residence and has found a number of items related to our area. He wants to give LCPC the receipts that these items will attract. We thank Bill for his kindness. **Look over the lots below marked "BW" and bid high. LCPC will benefit 100%.**

- BW-1 A white china cup marked "Lancaster, Pa.", 2 1/4" high and 3 1/4" in diameter. Marked "Made in Germany."
- BW-2 A pink and white china basket marked "Lancaster, Pa.", approx. 3 1/2" x 4". Marked "Made in Germany."
- BW-3 1891 Lititz Bed Spring Co. adv. for their Excelsior Bed Spring. The Express Print item includes testimonials.
- BW-4 1896 F&M Commencement Program includes the names of all 25 members of the Class of 1896.
- BW-5 1940 Lancaster General Hospital history, hospital procedures, personnel and financial report. 32 pages.
- BW-6 World War II - War Conservation Recipes by Women's Committee, Sixth Ward, Lancaster, Pa. 8 pages.
- BW-7 1953 Open House brochure for Armstrong's Idea House, one mile west of Lancaster on the Lincoln Hwy.
- BW-8 1950's (?) Blotter by Intell Printing Co. featuring the Picture of the Month (April) - A Conestoga Wagon.
- BW-9 1971 Five Share Certificate for Manheim Veterans Memorial Park Covered Bridge.
- BW-10 1980 Mount Hope Collectors Society. Includes five (5) different paper items.

BW-11 This lot contains 30 local newspapers - New Era, Intelligencer Journal and Sunday News, dated from Sept. 1, 1939 through Feb. 5, 1987. Each is carefully packed in a large vinyl bag with cardboard backing, but can easily be removed for examination. *Please handle with care.* In most cases, the value probably lies in the headline, some of which we include here. Most are of national significance. High bidder will have a choice of one or all thirty (30) items. For instance, a \$7 high bid can buy one paper for \$7, six for \$42, or all 30 for \$210. After that bidder makes a choice, the remaining papers will then be resold for the next high bid until all are sold. Some headlines (in no special order): War! Bombs Fall On Poland; Enemy Airplanes Over Calif.; Pope John Paul Shot; Glenn Orbits Earth 3 Times; City to Beautify 3 More Downtown Blocks; Carter Captures Nomination; Ford Nominates Rockefeller; MacArthur Urges China Blockade; Reagan Victorious in Landslide; Nation Paying Tribute to Ike; President Wounded by Assassin.

All lots below are postcards unless noted. Descriptions are the sellers'. Potential buyers should arrive early and examine the lots carefully. Non-members may buy but must register with the clerk before the auction begins. Sellers must wait until the auction is over to collect their receipts less 10% for the club. No checks will be mailed. We have volunteers, so please make their jobs as easy as possible. Un=unused. U=used. C=continental size.

This next consignment is from an out-of-the county member who wants to dispose of many PCs and to keep them in large lots. Where there are 100s, the highest bidder takes as many groups in the lot as he wishes; then we'll re-sell the lot once more.

- 1 California, 100s
- 2 More of the Far West incl. Yellowstone Park, 100s
- 3 Mid-western states, 100s
- 4 Williamsburg and southern states, 100s
- 5 Florida, nearly 1,000 cards
- 6 DE, NJ, DC, MD and many Baltimore
- 7 Pennsylvania, 100+
- 8 PA Turnpike

- 9 York and Lancaster
- 10 Philadelphia, 100s
- 11 New York, city and state, 100s
- 12 New England states, 100s
- 13 Canada and Niagara Falls, 100s
- 14 Indians, '64 NY Worlds Fair, Bahamas, Rally Day
- 15 Miscellaneous photo booklets and PC folders
- 16 Foreign, about 1,000
- 17 125+ Different Amish, cc size, u/un
- 18 19 Local views, from Tuck series #5600/56119
- 19 6 Patriotic unsigned Clapsaddles u/un
- 20 2 sets - USPS postal w/stamps: Classic Monsters and Legends of Baseball, 20 cards in each set. un

MORLATTON POST CARD CLUB INC.



28th Fall Postcard Show

Farm and Home Center
1383 Arcadia Road
Lancaster, PA 17603
(off Manheim Pike Rte. 72)



Friday, November 28, 2003 - 10 A.M. to 6 P.M.
Saturday, November 29, 2003 - 10 A.M. to 4 P.M.

No Pre-Show Buying

Admission \$1.50
(25 cents off with ad)

For more information call
Kay Feight, (717) 263-1638
Leon Rowe, (610) 444-0641