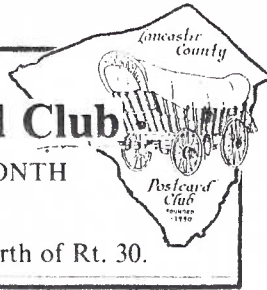


YOU ARE INVITED TO JOIN THE Lancaster County Post Card Club

MEETINGS - THIRD MONDAY EACH MONTH

1821 Municipal Drive, Lancaster, PA

Manheim Twp. Municipal Bldg., Rt. 272 half mile north of Rt. 30.



LCPC NEWSLETTER

January 1991

Vol. 2 No. 1

Next Meeting

Monday 7p.m.

Jan. 21, 1991

CHRISTMAS PARTY/MEETING TERRIFIC SUCCESS!

It was a wonderful way to celebrate the end of our FIRST YEAR! More than 60 members and their families enjoyed a super covered dish feast topped off with Dan Good's delicious hot chicken!

A great big THANK YOU to all who helped make it such a success!! And especially to Anne and Howard Steinberg and Peg Hanna who coordinated the fine meal.

New Officers Elected

The membership was VERY pleasantly surprised when it was announced that Earl Carver would accept the nomination for next year's presidency. With a quick nomination to fill his director's chair, secretary Elizabeth Graver cast a ballot for the following 1991 officers of the Lancaster County Postcard Club (LCPC):

President: Earl Carver

Vice-President: Sandra Shaub

Secretary: Shirley Neidermyer

Treasurer: Howard Steinberg

Directors (1991-92): Jere Greider, Jerry Kotek and Walter Mowrer

Directors (1990-91): Don Davis, Dan Good and Dorothy Fry (who completes Earl Carver's term)

These are all fine people who will add new ideas and direction to our Club. Please give them your support. Remember, it's YOUR club!



Peg Hanna(#11) serves hot chicken. In line are Lee Fry (#52), Connie Fry, Boots Kestenbaum(#113), Jim Kauffman(#111 behind tree) and Don Davis(#19)

HAPPY FIRST BIRTHDAY!

Story on page three.



G.E.Co. postcard

"Smile Messenger" series.

Presentations

Dede Schaeffer presented to all members who exhibited this year our own full-color postcard-size LCPC Exhibit Board Awards. Thanks go to Jim Rudisill for the beautiful calligraphy.

Jim Ward presented members who gave programs postcard-size Educational Awards. He also surprised 32 members by presenting them with postcard-size Certificates of Appreciation. (See separate story.)

Santa Postcards

Daisy Schaeffer's wonderful Postcard Santas brought the evening to a spectacular finale. We thank her and Dede for sharing a small portion of their collection with us.

Peg Hanna's beautiful poinsettia, Charlie Heim's hand-carved Santa, Dede Schaeffer's big Christmas Tree and Santa decorations and Jim Ward's array of Santa centerpieces rounded out a fun night.

EXHIBIT WINNERS

DEC. 17 EXHIBIT BOARDS

It was a record-breaking display of pulchritudinous posters that greeted the sixty-plus members and guests at our Christmas Party/Meeting. Dede Schaeffer, Exhibit Board Chairlady, was kept busy!

Jerry Kotek's Scenes of Winter was the sole entry in the **Winter Time** category and so took the honored First Prize.

Christmas entries and prizes were:

Walter Mowrer's Red Bow (First)

Jim Ward's Christmas Toys (Second)

Lorraine Singer's 'Tis the Season (Third)

Earl Carver's Christmas Tree (Honorable Mention)

New Years entries and prizes:

Jim Ward's New Year Pigs (First)

Roy Cox's Rose Parade (Second)

Jerry Kotek's New Year Greetings from the Past (Third)

Don Davis's Tempus Fugit (Honorable Mention)

Roy Cox's Weather Forecast (Hon. Mention)

A special Honorable Mention went to an electric display of Jim Ward's die-cast Hold-to-Light Christmas.

President-Elect Earl Carver announced (with Dede Schaeffer concurring) that January's Boards should feature **My Favorite Home Town Postcards**. This was also chosen to be the first program of 1991: a one minute show-n-tell of each member's favorite home town postcard.

EDUCATIONAL AWARDS

Recipients of the Lancaster County Postcard Club **EDUCATIONAL AWARDS FOR 1990** are:

Feb. 26- **Jim Ward** Let's Go Shopping in Old Lancaster County

Mar. 26- **Anne Steinberg** Easter Traditions

Apr. 16- **Mary Darrenkamp** Covered Bridges in Lancaster County

May 21- **Gordon McKinzie** Kirchner's Art Nouveau Ladies

Aug. 20- **Charlie Griffiths** My Show 'n Tell Album

Oct. 15- **Anne Steinberg** Traditions of Hallowe'en

Nov. 19- **Jose Rodriguez** Mail Carriers on Postcards

Dec. 17- **Daisy Schaeffer** Santas on Post Cards

Note: June and September's meetings were 100-lot auctions; July was membership participation, "A Postcard Which is Special to Me". January was our first/organizational meeting.

Not bad for OUR FIRST YEAR. CONGRATULATIONS!

THANK YOU



CERTIFICATES OF APPRECIATION

One of the better kept secrets of the LCPC Christmas Party/Meeting was the surprise presentation by out-going president Jim Ward of homemade postcard size **Certificates of Appreciation**.

In introducing the 32 members who received them, Jim listed the various reasons supporting his choices: contribution to the Club Library or Club Newsletter, committee or volunteer work, promoting club membership and offering encouragement and support to a first-year president (who needed all he could get).

To the following goes a huge Club THANKS-
Tom Beck, Carl Campbell, Earl Carver, Mary Darrenkamp, Don Davis, Nancy Gambler, Alice Goddard, Dan Good, Elizabeth Graver, Jere Greider, Charlie Griffiths, Peg Hanna, Bernie Heisey, Helen Hellinger, Gerald Hostetter, Elaine Levin, Bob Lieberher, Harry Lines, John Long, John McClintock, Gordon McKinzie, Shirley Neidermyer, Jose Rodriguez, Robert Roop, Jim Rudisill, Daisy Schaeffer, Dede Schaeffer, Bill Seigford, Paul Smoker, Anne Steinberg, Howard Steinberg and Merv Wenger.

WARD SCHAEFFER GRIFITHS GOOD HOSTETTER HEISEY LONG WENGER NEIDERMYER HELLINGER STEINBERG GRAYER

LANCASTER COUNTY POSTCARD CLUB

LANCASTER, PA.

FOUNDED 1990

CERTIFICATE OF APPRECIATION

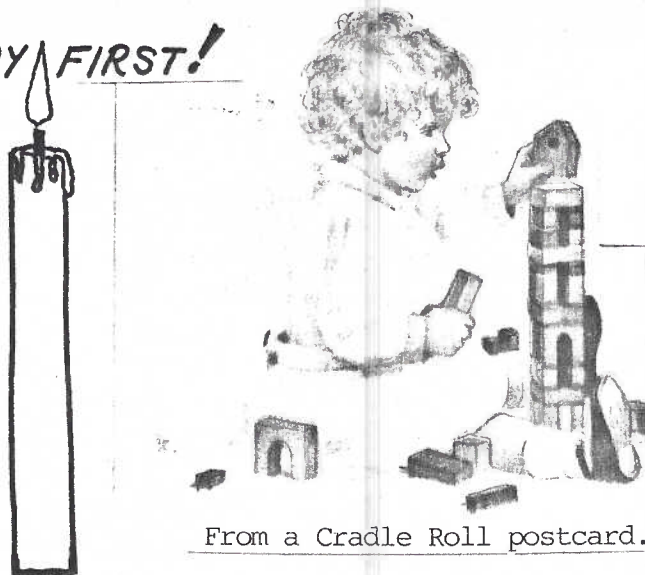
MARY DARRENKAMP

REIDER CARVER DAVIS MC MULLIN MC MULLIN MU MMERT ROOP VINEIDMAN MCCLIN

HAS CONTRIBUTED TO THE LANCASTER COUNTY POSTCARD CLUB TIME, MATERIAL AND INTEREST TO A DEGREE THAT HE/SHE DESERVES THE COMMENDATION OF THE CLUB'S OFFICERS AND MEMBERSHIP IN THE YEAR 1990. A HEARTY "THANK YOU" FROM YOUR FELLOW MEMBERS.

Jim Ward, Pres.
 CLUB OFFICER AND TITLE

This is the postcard CERTIFICATE OF APPRECIATION awarded 32 LCPC members. A similar EDUCATIONAL AWARD went to 8 members (see story). The 'scroll border' consists of the Club's 51 Charter Members listed in chronological order.

HAPPY FIRST!

From a Cradle Roll postcard.

FIRST YEAR ACCOMPLISHMENTS

Happy Birthday Lancaster County Postcard Club (LCPC). You're a year old this month. And you've come a long way, BABY!

A few of your accomplishments:

Organized Jan.22,1990 with 21 members;closed Charter Membership March 26 (51 members) ended year(Dec. 22) with **115 members!**
 Published 4 pg. **monthly Newsletter** in Feb., expanded to 5 pgs. in May, 6 pgs. in July
 First member-conducted **Educational Program** in Feb. + 8 more incl. one full-club participation program
 Published Club 'advertising' **postcard** plus member application **postcard** in March
Library of 12 donated books in April, 18 in Aug. and 27 in Dec. plus \$20 Library Fund
 Published hand-colored National Postcard Week **postcard**;exchanged with 50 clubs,collectors
Exhibit boards began in May and continue every month with cash and **postcard**(size)awards
Auctions conducted at 2 meetings with complete lot descriptions in prior Newsletters
 Membership **badges** used successfully by regular attendees at all meetings
 Published **postcard** **check lists** for Tuck cards of Lancaster City; Hershey 'bar-size' pcs's, Rocky Springs pc's;D.B.Landis publisher pc's
 Published full-color standard size **postcard** (3,300 quantity)for sale to general public
 Published **postcard Exhibit Board Awards**,as well as **postcard Educational Awards** and **postcard Certificates of Appreciation** for Club use
 Completed first year with \$655.18 in **Treasury**

YORK COUNTY**STAMP EXHIBITION**

100 Frame Exhibit - 27 Dealers

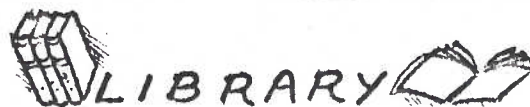
HORTICULTURE HALL

York Fair Grounds - 334 Carlisle Ave.

FEBRUARY 1 & 2,1991 Fri.12-8,Sat.10-5

For more information write: P.O.Box 85

Glen Rock,Pa. 17327



In the Spirit of Giving Dick Kestenbaum donated a copy of Forrest Lyons' The Artist Signed Postcard(1975) and Patriotic Postcards by John Kaduck (1974), the latter is our second copy but still appreciated.Artist Signed is a picture-packed overview of a popular subject. Try it!

Walter Mowrer added a second copy of Wood's Collector's Guide to Postcards (1987).It's a very popular book in our Library.

Sandy Shaub graciously paid for the new (1990) Philadelphia in Picture Postcards 1900-1930 as a Club addition. This 115 pg. heavily illustrated book was briefly reviewed at the Nov. meeting. (Ed.note: members who made advance payments on their own copy may pick them up in Jan. or call Jim Ward. There's an additional \$2 rebate due them.)

Thank you, donors, for your thoughtfulness!

**HOW CAN I GET A HEAD??**

...Don Davis screams to all corners of the world. Don has 3 parts of the Franz Hultz installment set of Uncle Sam. Please call Don at 872-8630 if you can help him with the missing 'topper'. He'll perform the surgery. If you don't complete it by July 4th, Don, you can always show Uncle Sam as an ostrich with his head in the sand.

BRING YOUR UNWANTED HERSHEY pc's to the Jan meeting for me to look at. Russell Mull #79
CHECK MY TABLE:local views,adv(trade)cards; topical pc's;discount pc supplies.Jim Ward.

COCA COLA WANTED Postcards,photos showing bottling plants, coolers, dispensers,signs, trucks,etc. Also,any other items used to advertise Coca Cola or other soft drinks.
 Jere Greider, 3724 Kennel Ave.,Columbia,Pa. 17512.Phone 717-285-5872.

POSTCARD MAIL AUCTIONS(John H.McClintock, #25)I have issued illustrated mail auction sales since 1968. If you would like to receive the next one, send a 45¢ stamped/addressed return envelope to: Virginia Mail Auction,P.O.Box 1765,Manassas,Va.,22110.
 (Ed.note:mention LCPC,so John knows these ads really work!Thanks)

PHONOGRAPHS WANTED Any postcard showing the olde hand-cranked phonograph (except the old couple listening). Also, cards of Thomas A. Edison or any of his inventions. I have several 'feather' cards for trade.
 Joan Lehman #68.



ST. PAUL'S UNITED METHODIST CHURCH
100 W. Main St., Mountville, PA 17554

REV. EARL C. CARVER

MINISTER OF OUTREACH

212 Pheasant Drive
Columbia, PA 17512

Church
717-285-5020

Home
717-684-3069

Earl Carver - 1991 ICPC President

This doesn't quite tell it all but you can see our new President is well qualified to lead a group. Earl lived in Marietta but spent a major part of his life ministering away from home.

Now he's retired(?), back in Lancaster County, but still substituting as well as serving in the Outreach Program.

Offer to help him where you feel you can be of help in our Club. Or let him know you have time to offer. He will appreciate it. We all will appreciate it.

You'll do a fine job, Earl. We're with you!



Howard Steinberg is seeking the location of this real photo parade scene. The best clue might be the sign: EXCHANGE HOTEL/S. BROOME KILLINGER. Is it WVI?



January's EDUCATIONAL PROGRAM is one in which we all 'educate' each other. Each member is invited to participate by bringing one postcard which he or she will show 'n tell for one minute. The THEME is "MY HOME TOWN". Remember, some of us may have several towns to choose from - the one or more where we grew up or the one where we now live.

The tough part will be keeping this bit of nostalgia down to 60 seconds!

EXHIBIT THEME



The program theme for January, "MY HOME TOWN" is extended to this month's Exhibit Boards as well. December's eleven exhibits were beautiful results of labor and love and VERY much appreciated by all.

Exhibitors know the satisfaction of sharing their postcards and they invite those who haven't tried it to do so. Most of us have collected even a few postcards of our home town. So...

Now's the time for beginners to join the fun. Remember, it's neatness and eye appeal that count most. Condition and rarity carry some weight, but with a little originality and a title even a novice can do a great job!

Use a 22x28" poster board (vertical preferred but not absolute). Colored boards can sometimes enhance an exhibit. Clear corner tabs (2 in alternate corners are often enough for each card) and don't rely on sight - use a ruler! An hour or two and you're finished!

APOLOGIES TO TWO FINE LADIES

Elizabeth Graver was asked by the editor to share her Christmas Postcard story and she consented. She had not initiated the offer as was implied.

Elaine Levin was unintentionally slighted when the editor described Daisy Schaeffer as the Lady of Quality Paper(Items) in last month's Newsletter. Anyone who visits Elaine at Renninger's knows the excellent quality of her postcard and other paper inventory.

TRANSITION

The Newsletter masthead is absent this issue but will reappear in Feb. after all committee assignments are completed. I thank Jim Rudisill, our new staff artist, for his column heading embellishments. JFW.

FEAGLEYVILLE, LANCASTER CITY

David Bachman Landis is a name that recurs often with local post-cards. Aside from his occasional misspelling, he was a great local publisher of unique scenes, especially in Lancaster City and west of the City.

A divided back 1908 card (shown) is part of a short-lived neighborhood in north Lancaster City. In the 1870's John Feagley began constructing frame houses in the area bounded by North Queen and Prince Sts. and Old Clay and Liberty Sts. The Landis card shows a frame church as well.

The 1898 City Directory lists an African Methodist Episcopal Zion Church, as does the 1903-4 Directory, at 38-40 Clay Street. In 1906 it became St. John's Union African M.E. Church.

Marked on the 1897 map is where the children stood in front of the church as Landis faced east and took their picture. The brick house at the far end of Old Clay Street on the p.c. is #811 North Queen Street.

The 1912 map shows why the church moved to the north side (at #37 Old Clay Street). Gunzenhauser Bakery bought the major portion of the Feagley tract on the south. Old Clay St. between Market and Queen is now the Harold E. Smith Co. parking lot. #811 N. Queen is still intact! Join the DBL'ers. We've compiled a checklist to get you started.

Read a POSTCARD story?
Have a FEATURE or NEWS item? Your in-put to the LCPC NEWSLETTER is welcomed. Write: Box 300 Lititz, Pa., 17543-0300.

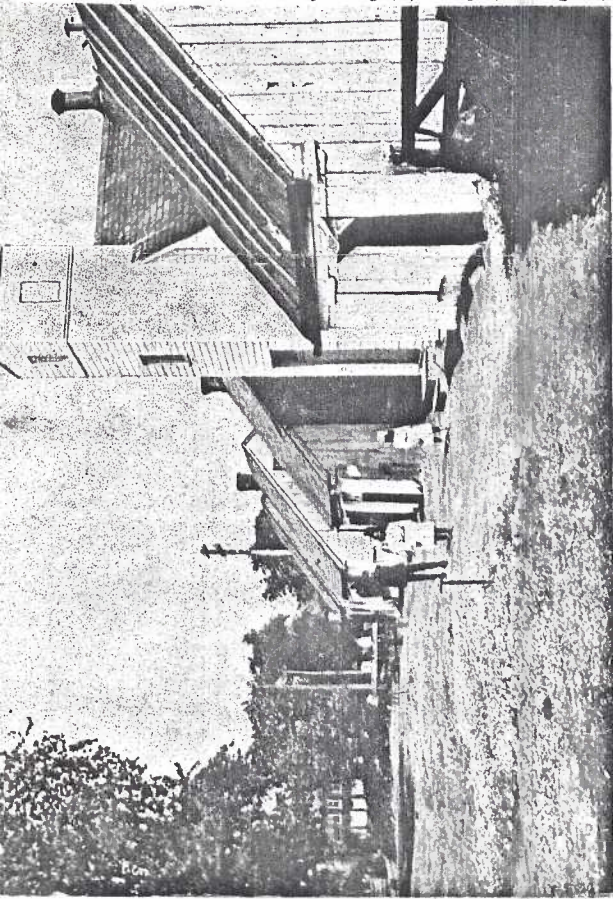
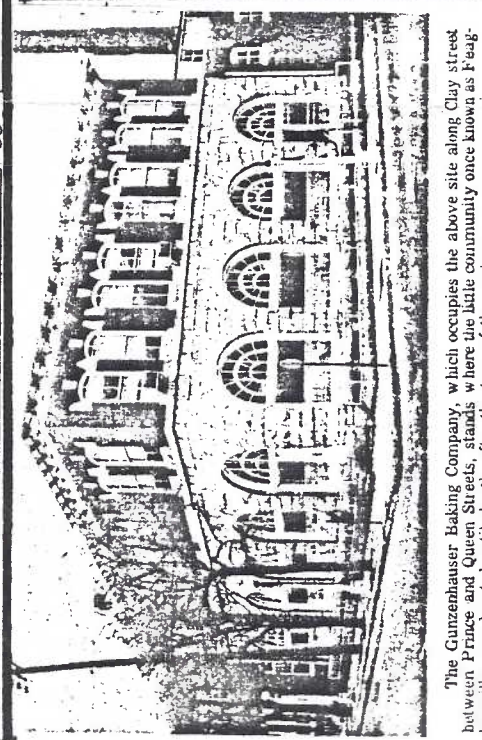
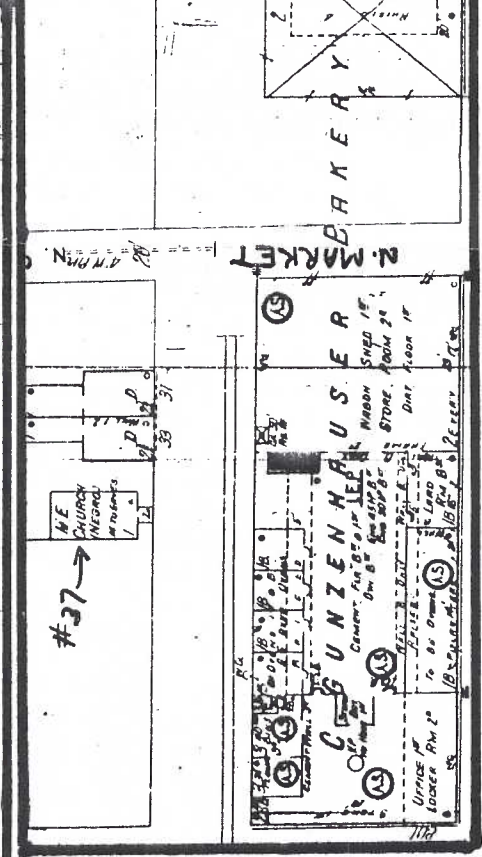
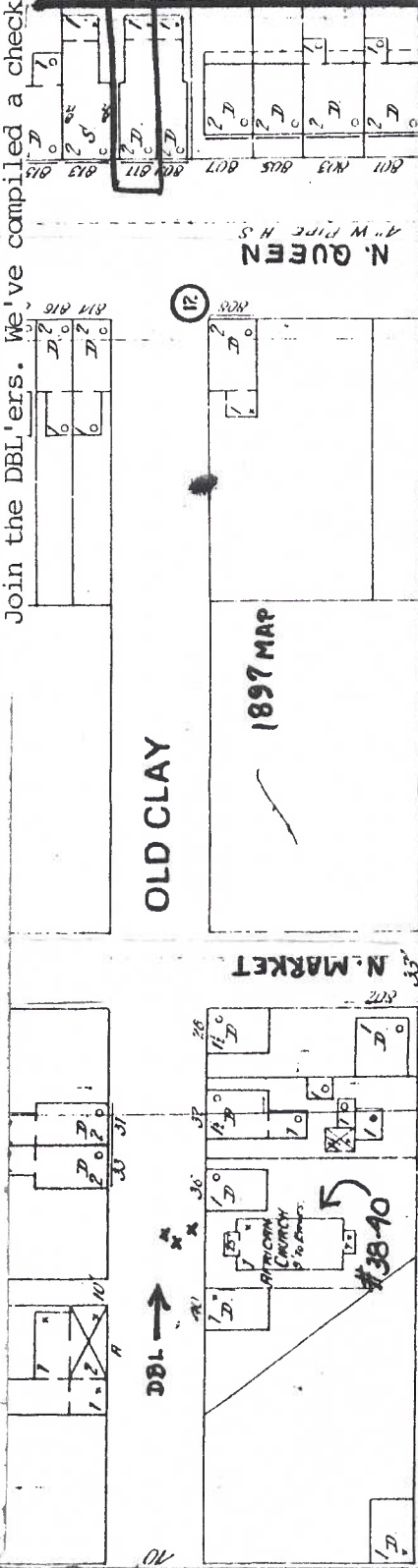


Photo D.B.L. 1905 FEAGLEYVILLE CHURCH AND STREET SCENE, NORTH LANCASTER, PA.



The Gunzenhauser Baking Company, which occupies the above site along Clay Street between Prince and Queen Streets, stands where the little community once known as Feagleyville, was located until shortly after the turn of the century.

NEW MEMBERS

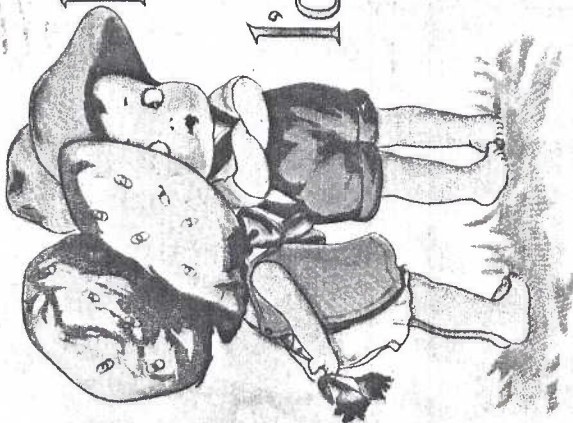
We end our first year, 1990, with 115 members on the roster. Welcome to:

- #112 **JAMES R. GALLAGHER** who collects art, Paris and boxing on postcards
and these wives join us as well:
#113 **BERTHENA (BOOTS) KESTENBAUM** a dealer with husband Richard
#114 **RUTH M. LINES** who shares collecting Lancaster County and esp. Millersville with husband Harry
#115 **BETTY BECK** who joins husband Tom (who collects Lancaster, especially Thaddeus Stevens and Rocky Springs)

PENN HILL MEETING HOUSE POSTCARD

Anne Steinberg reminds us that a member of the Penn Hill Meeting issued a chrome pc of that Friends Meeting House at Wakefield (Fulton Twp.) a few months ago. Jeremiah Brown built it in 1823. If you don't have a representative postcard from this small Lanc. County hamlet, this would be an opportunity. Only a small quantity were printed. The lady is selling them at her cost - 50¢. Contact Anne.

If I could get my
face inside
I'd kiss the "tulips"
that you hide.



A reminder - if you're looking for Valentine postcards to 'recycle' our February 18th meeting comes after Valentines Day this year.

AUCTION!



Our first AUCTION for 1991 will follow the January program and exhibit board display. Auction Committee chairman Walter Mowrer has lined up an auctioneer and a new stream-lined clerical system. So **bring along the descriptive list (enclosed)** and check carefully the lots which will be displayed before the meeting.

Consignors are Club members but any one is welcomed to bid and buy. Treasurer Howard Steinberg has opened a checking account so the cashier can now accept good checks as well as cash. Consignors will be paid after receipts are collected the same evening.

With the limited number of tables, regular bourse (trading and selling) members should bring their own card table.



Fair one, if I thy lips might taste,
No time on other sweets I'd waste.

One of the Five Senses pc's in Fairman Co.'s The Pink of Perfection series #1027.

WE DON'T LIKE TO SAY "GOOD-BYE"



IF THIS SAD FACE APPEARS ON YOUR ENVELOPE, it means we haven't recorded your 1991 dues. Send check to: 645 Robt. Fulton Hwy., Quarryville, 17566. Or call Howard Steinberg at 786-2362 THIS WILL BE YOUR LAST NEWSLETTER unless we hear from you. Stay with us!

LANCASTER COUNTY POSTCARD CLUB AUCTION

Following 7 p.m. Meeting - Monday, January 21,1991

No reserve bids. 10% commission goes to Club. Payment(cash or check)same night,please.
Abbreviations used: u=used, un=unused, pc=postcard, rp=real photo postcard,
(12)= 12 pieces in lot. All are postcards unless designated otherwise.

- 1 Lebanon (12) including 1 Palmyra u/un 50¢
- 2 Lebanon (12) including railroad and interior u/un 25.00
- 3 Lititz (9) including 1 Neffsville u/un 11.00
- 4 Mt. Gretna (12) u/un 5.00
- 5 Mixed Penna. (12) u/un 5.00
- 6 Mixed Penna. (12) u/un 1.00
- 7 Mixed Penna. (10) incl. 1 Hershey u 4.00
- 8 Lanc. city & county (11) u/un 7.00
- 9 Lanc. city & county (9) u/u 2.00
- 10 Lanc. city & county (9) u/un 4.00
- 11 Expositions (28) misc. incl. rp's and Columbian Expo. ticket 12.00
- 12 Rp three-ton steam roller u 10.00
- 13 Rp dog sled (7 dogs) un 1.00
- 14 Misc. (24) comics, battleships,etc. 3.00
- 15 Lanc. advertising pc's (9) incl. 1 Strasburg 7.00
- 16 Lanc. trade card, postcard, blotter adv. (9) incl. 1 Manheim 7.00
- 17 Lanc.,Leola,Ephrata adv. pc's and postal cards (11) 15.00
- 18 Little Art Shop pcs's (7, 3 w/pc backs) 10.00
- 19 Little Art Shop pcs's (7, 3 w/pc backs) 11.00
- 20 Lancaster (4) incl. 2 pc's, 1 trolley (blank back), 1 folder 32.50
- 21 Lancaster (3) + 1 "West End Street Railway" 9.00
- 22 Santas (9) very nice! 32.50
- 23 Expositions (8 pcs.) rp's,folder,etc. 1915-1967 7.00
- 24 British stamp pc's (4) + misc.(4) w/good stamps 5.00
- 25 Museum art pc's (17) un 2.00
- 26 Verses, poems and songs (19) on pages 8.00
- 27 Small business calling cards (29) 1.00
- 28 Religious cards (non-pcs's) (19) 1.00
- 29 Birthday greetings (38) u/un 1.00
- 30 New Years greetings (13) u/un 1.00
- 31 Cupids (32) u/un 8.00
- 32 Cupids (35) u/un 9.00
- 33 Valentine greetings (36) u/un 8.00
- 34 St. Patrick pcs's from Ireland,continental size (10) + 1 un 2.50
- 35 Continental chromes, mostly foreign w/stamps (40+) 4.50
- 36 Continental chromes, England, Eng. royalty (17) un 1.00
- 37 Continental chromes, misc. (18) 5.00
- 38 Deer (13) rp 1.00
- 39 Bears (5) rp 5.00
- 40 Pa. Grand Canyon (4) rp 5.00
- 41 Red Cross, World war II (2) rp 1.00
- 42 Harrisburg (9) + Niagra Falls (9) 1.00
- 43 German American Art Co. birds (7) + 1 5.00
- 44 Covered bridges, chromes (84) un 5.00
- 45 Covered bridges, chromes (84) un 5.00
- 46 Misc. chromes (29) + 1 2.00

continued on second page

- 47 Lanc. Duke St. Post Office(pub.by Lanc.Photo Supply)clear NY & PITTS RPO 1905(front) \$8.00
- 48 Harrisburg, small album (12) approx. 1905,incl. rp's \$4.00
- 49 Hershey bar-size pc's (10) b/w u/un \$6.00
- 50 Hershey (6) color pc's (6) un \$4.00
- 51 Rp - two baseball players, letter "L" on uniforms un \$2.00
- 52 Advertising - Chevrolet trucks (4) 1950's un \$10.00
- 53 Rp's - Double-decker buses, Gt.Britain, (5) 1950's u \$1.00
- 54 Rp's - Women (10) un \$3.00
- 55 Rp - 1949 World Champion bobsled team (identified on back) \$5.00
- 56 Arcade cards, copyright 1948, Ex.Sup.Co. (13) comics, some dups. 1.00
- 57 Restaurants, chrome and linen (10) u/un \$4.00
- 58 Exaggerations, linen (5) un \$1.00
- 59 Postal receipt cards,Lancaster businesses (4) \$1.50
- 60 Lancaster city, linen (11) \$3.00
- 61 Lanc. county chromes (79) some dups. un \$7.00
- 62 Shoe box (over 450 pcs's) misc. greetings, views u/un \$22.00
- 63 Columbia (12) u/un \$7.00
- 64 Marietta (6) un \$2.00
- 65 Millersville (5) u/un \$1.00
- 66 Lanc. churches (11) u/un \$4.00
- 67 Long's Park (11 diff.) u/un \$5.00
- 68 Williamson's Park (6 diff.) u/un \$9.00
- 69 Rocky Springs Park (10 diff.) u/un \$14.00
- 70 Court House (9 diff.)+ Duke St. Post Office(5 diff.)+ Chestnut St. P.O.(2 diff.)u/un \$2.00
- 71 World War I, European (30) many rps's u/un \$1.00
- 72 Same but (31) rp's u/un \$1.00
- 73 Foreign views (45) + 1 Illinois u/un \$1.00
- 74 Rp's - people,animals (9) 2.00
- 75 Misc. greetings (55) \$4.00
- 76 Cats,cats,cats (Mainzer) 'doing people things' (7) sports and play un \$6.00
- 77 Same (8) autos and vacations un \$7.00
- 78 Same (9) occupations and cameras un \$5.00
- 79 Same (10) misc. funny scenes un \$7.00
- 80 Set of 15 "Iron Horse"/Centenary of B & O RR)pc's,1927,incl. double folds \$20.00
and set envelope. used w/comments on each by a contemporary railroad man
- 81 Stump & Mueller Paints on horse-drawn Old Home Week float by Stafford,Marietta un \$13.00
- 82 P.R.R. depot (with train) New Freedom,Pa. un \$9.00
- 83 Two sets of cards - Gettysburg and Fort McHenry \$7.00
- 84 World's Fair mixture - 1964 New York and 1982 Knoxville (pc's,folders,flash cards) \$5.00
- 85 50 Chromes - all trains, continental & standard size un? \$6.00
- 86 10 Modern chromes - cont.& stand. size. un? } 5.00
- 87 Double fold (3 section) view pc of Wein u } 5.00
- 88 Two Pa. river pc's with steamers: Lancaster, Pittsburgh u/un \$14.00
- 89 8 Train pc's,incl. Lancaster station and PRR Broadway Ltd. u/un \$9.00
- 90 10 Mixed view pc's - In.,Pa.,N.Y.,Mi. u/un \$1.00
- 91 24 Chrome pc's, cont. & stand. - all streetcars \$3.00
- 92 74 View pc's - 15 various states, all with streetcars,cable cars,inclines,subways
elevateds or horse-drawn u/un \$9.00
- 93 79 Views pc's - Ohio,N.Y.,Oklahoma,Pa. with subjects as above lot, u/un \$2.00