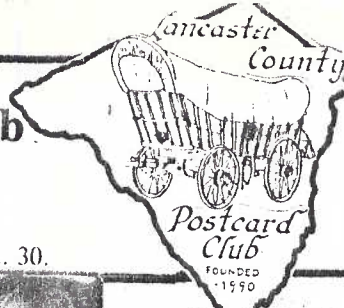


YOU ARE INVITED TO JOIN THE NEW Lancaster County Post Card Club

MEETINGS - THIRD MONDAY EACH MONTH

1821 Municipal Drive, Lancaster, PA

Manheim Twp. Municipal Bldg., Rt. 272 half mile north of Rt. 30.



LCPC NEWSLETTER

October 1990

Vol. 1 No. 9

Next Meeting-

Mon., Oct. 15, 1990 7 pm



HALLOWEEN PROGRAM - OCTOBER 15

We meet early this month folks! With five Mondays in October we will be seeing each other less than 30 days from the last time! Are we having fun yet?? Why, sure! and the excitement continues in October.....

Anne Steinberg will have a very great show about HALLOWEEN POSTCARDS. And for those of you who were members way back in our 'early days', you know how enjoyable and beautiful Anne's Easter cards were!

The pedagogue in our Quarryville lady can't be contained as Anne delves into the weird and wild TRADITIONS OF HALLOWEEN. She promises 'you won't be tested', (but you may want to takes notes anyhow). Remember all the neat stuff we learned about Easter Traditions...witches!! What can we expect now?



MYSTERY PHONE CALLER

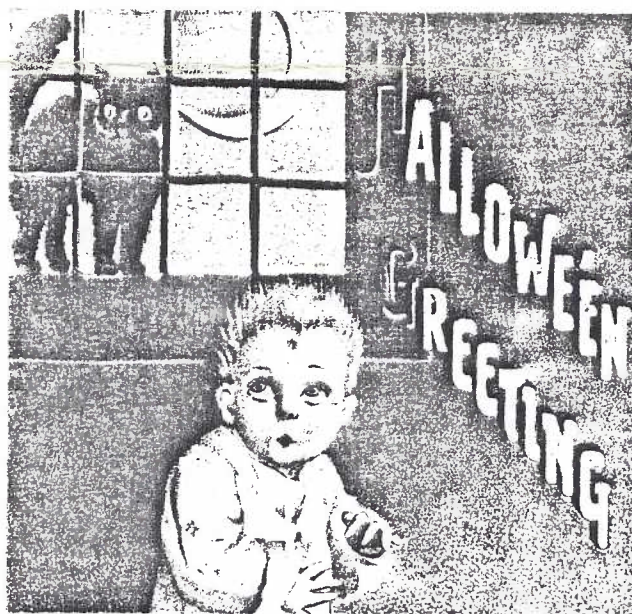
Dorothy Fry, member #59, received a phone call from a fellow member (male) just as she arrived home from a long trip. She asked the member to call back (about paintings on postcards - her collecting interest). So far, he hasn't. Dorothy is sure she didn't dream this. So if you were he, call her at 733-8918 and hopefully you won't catch her coming home from another trip!

FALL POSTCARD SHOW LINE-UP

Beginning with the Great Eastern U.S. Antique Book, Paper, Advertising and Collectables Show at Allentown, we can get ourselves in gear for good hunting this Fall. It is a 1-day affair, Sat., Oct. 13, 9:30 to 9 p.m. in the Agricultural Hall, 17th and Chew Sts., Allentown Fairgrounds. Admission is \$4.50 with a ticket (given away by many dealers) otherwise it's \$4.75.

Closer to home and more specialized is the YORK INTERNATIONAL POSTCARD FAIR. This is the second year and should prove to be a favorite for many. It boasts plenty of space, large dealer booths and food in one huge show room. Mark your calendars for Nov. 16 and 17, 9 to 7 and 9 to 5. Admission is \$2 per day or \$3 for both days. York Fair Grounds is the location.

A show that's been around since anyone can remember is the MORLATTON POST CARD CLUB. It meets, as usual, on Thanksgiving Weekend, Fri., Nov. 23 (10 to 7) and Sat., Nov., 24 (10 to 5). Admission is \$1 (or 75¢ with a card - free at most pc dealers now). This year it will be at the Willow Valley Family Resort and Conference Center, 2416 Willow Street Pike. Lots of familiar faces and old friends will be seeing you there.



NEW LOCAL HISTORIES

Some of us interested in local views have found regional and town histories invaluable for identifying postcards.

September saw the release of a BEAUTIFUL "History of Southern Lancaster County". Although it shows very few local postcard scenes, the commentary and historical references are priceless. Taped interviews and new research material makes this a major contribution to the entire 'Southern End' as they often refer to themselves.

It took a large working committee and several years to accomplish this 'gem' that covers everywhere from Christiana on the east to Muddy Run on the west. A big THANK YOU and CONGRATULATIONS to the folks down there who've helped us learn more about ourselves.

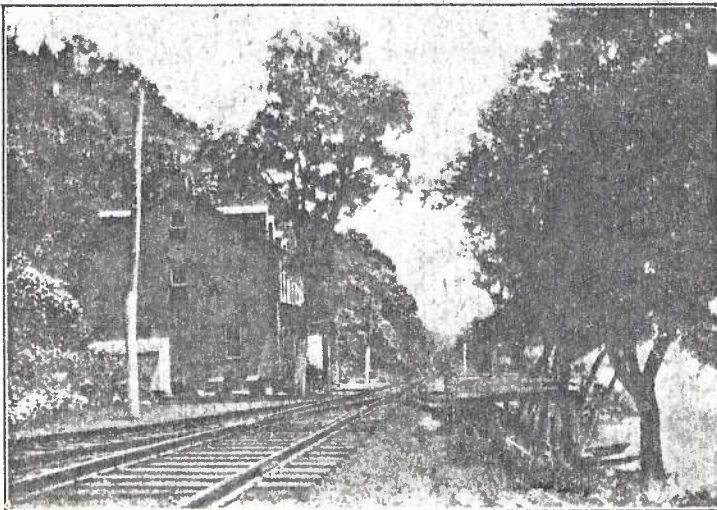
At the other end of the County a similar book will be released towards the end of October when Rothsville celebrates its 200 Years.

Armin Sohns is the one man responsible for all of the written contents as well as assembling the excellent photographic history. This scholarly volume (though not backed by nearly as much capital) represents the finest compilation of the Rabbit Hill Area ever assembled anywhere.

You owe it to yourself to procure this pictorial assemblage (with many postcard scenes). And meeting and speaking with this gentleman will add a new chapter to your life!

Lancaster County is blessed with an abundance of history. Don't miss out on it! it's right at your front door -and its also on thousands and thousands of postcards.

Fites Eddy Hotel, on the Susquehanna.



Drumore P. O., Lancaster, Pa.

HOWARD FRYLYE, Proprietor.



EXHIBIT BOARD AWARDS

A special THANK YOU to Kenneth McClain, the newly-elected President of York Post Card Club for visiting our September meeting and joining the discussion about a different kind of recognition for Monthly Exhibit Board Winners. His suggestion of a postcard as a merit has been accepted.

Needless to say an action committee has already produced four Award Postcards for ALL ENTRIES and these will be available very soon.

A sample postcard accompanies this article. Plans call for Chairlady Dede Schaeffer to award each past winner a card as well. When you see them, pass a THANK YOU on to: Jim Rudisill (artist eccellente) Jim Ward (coordinator) John Long (super printer).



.....
EXHIBITOR

.....
TITLE

.....
DATE

.....
THEME

HERSHEY "BAR" CHECKLIST AT OCT. MEETING

Publisher-oriented Charlie Griffiths has revised his old Hershey (the narrow fit under the candy bar inside the wrapper) Postcard list. It will be available at the Oct. meeting for the price of printing=10¢.

Although he has not included the many varieties on the reverses, the alphabetized caption list should prove beneficial (and a challenge) for most of us who enjoy these under-sized postcards...the foundations for many a good 'pig-out' in the olden days!

Collecting these pc's is not expensive. Most of them can be found in nice condition for under \$3. And with Hershey's present campaign promoting their old labels and traditions, these postcards are bound to see new interest from new collectors.



A late caller!

OLD POSTCARD COLLECTOR MAGAZINES WANTED

Many members still don't know the enjoyment of reading our hobby's #1 monthly. If you're not a 'keeper', why not share your fun with other members? Bring your back issues to the Oct. meeting. The auctions and prices may be out-dated, but the columns and in-depth articles are timeless. Share your hobby!

DBL (DAVID BACHMAN LANDIS) CHECKLIST

Much to the amazement of Members Bernie Heisey and Jere Greider, the other half of the original DBLer Team - Gerald Hostetter and Jim Ward, have brought an up-dated Landis Postcard List to fruition. In other words, it's done!

If you're curious about this local publisher, expect to read more about him in a future Newsletter. Meanwhile, you may wish to look into the Landis postcards. Many will have the name PLUCK ART PRESS or the initials DBL on the front of the card. All will have the same or David Bachman Landis's son's name ELVIN G. LANDIS or LANDIS ART PRESS on the back

The new Checklist has 162 different captions seen to date, but collecting a complete (?) set of scenes involves only 125 postcards.

Charlie Griffiths is certainly correct when he says that, by and large, the Landis postcards show a huge ratio of scenes not viewed on other Lancaster area cards. Maybe this is why some of us like them so much, regardless of the fact they are all black and white (with a few monotone colors thrown in).

D.B. Landis was very much interested in his native Lancaster County. He was a 'mover and a shaker' while a member of the Lanc. County Historical Society and his postcards show it! Check out his cards!

**NOMINATING COMMITTEE APPOINTED**

These Charter Members have been asked by President Jim Ward to serve as a committee to seek out nominations for 1991 Officers and Directors: Donald Davis, Gerald Hostetter and Howard Steinberg.

They will ask members to serve as President Vice-President, Secretary and Treasurer and will seek 3 additional Directors. The new Directors will serve 1991 and 1992. The present Directors have been asked to continue their terms through 1991. This way we will have three experienced Directors carried into the succeeding year.

Helping your Club in any capacity will be appreciated. Taking a real position gives you a sense of pride and fulfillment. Give the Committee your cooperation,

**CHRISTMAS PARTY-FREE CHICKEN!**

Good ole' Dan Good came up with a blockbuster offer at the last Directors meeting: he will supply the chicken if the rest of us bring the 'trimmings'! Now if we can get him to put on a beard! Dan would also like to know how many to count on.

Without water supply we should limit our donations to cold items and paper plates. At the October meeting please step forward to serve on the Christmas DINNER Committee. The program is set. We will dispense with Business, except for a quick Election (nominees will be decided upon in November).

EXHIBIT WINNERS - NEW THEME

September's theme was CHILDREN. These folks won the prizes: Daisy Schaeffer (first) "PLAY TIME", Jim Ward (second) "12 SMILES FOR 12 KIDS FROM CHARLES 'TWELVETREES", Dede Schaeffer (third) "BARE FACTS", Earl Carver (honorable mention) "LET THE CHILDREN COME".

OCTOBER'S THEME is - you guessed it - Valentines! So get busy! If you can't find them, then HALLOWEEN will do!

NPCW - NOT TOO SOON TO START

National Post Card Week is coming up in March. It won't seem as far away if you let your idea for an LCPC theme go until Dec. or Jan. Think of a good topic. Make a rough sketch. Take a look at Bob Roop's great card from last year and see if you can top it! A professional touch can be done after we choose your card. START NOW!!



1-1	38-1	75-5
2-2	39-5.50	76-9
3-2.50	40-2.50	77-15.00
4-2.50	41-5	78-14.00
5-2	42-4	79-7
6-2	43-1	80-13.00
7-2,50	44-1	81-5
8-1	45-.50	82-5
9-2	46-4	83-3
10-3	47-1	84-6
11-9	48-3	85-5
12-6	49-1	86-6
13-22.50	50-35.00	87-1
14-15.00	51-30.00	88-9
15-7.50	52-2	89-8
16-11	53-2.50	90-21.00
17-42.50	54-5	91-3
18-22.50	55-16.00	92-4
19-7	56-5	93-2
20-27.50	57-5	94-5
21-10	58-.50	95-2
22-1	59-.50	96-6
23-8	60-2	97-11
24-5	61-1.50	98-8
25-1	62-2	99-11
26-5	63-2	100-7
27-2	64-3	101-7
28-2	65-1	102-5
29-7	66-10.00	103-6
30-16.00	67-7	104-5
31-.50	68-11	105-2
32-1	69-13	106-8
33-12.00	70-5	107-3
34-7	71-11	108-1
35-1	72-1.50	109-5
36-1	73-9	110-8
37-1	74-12	

.....
Gross (to 23 buyers) \$734.50
10% commission (LCPC) 73.45
Net (to 6 sellers) \$661.05

Let's have more sellers in the next sale. We have the buyers who want to buy!

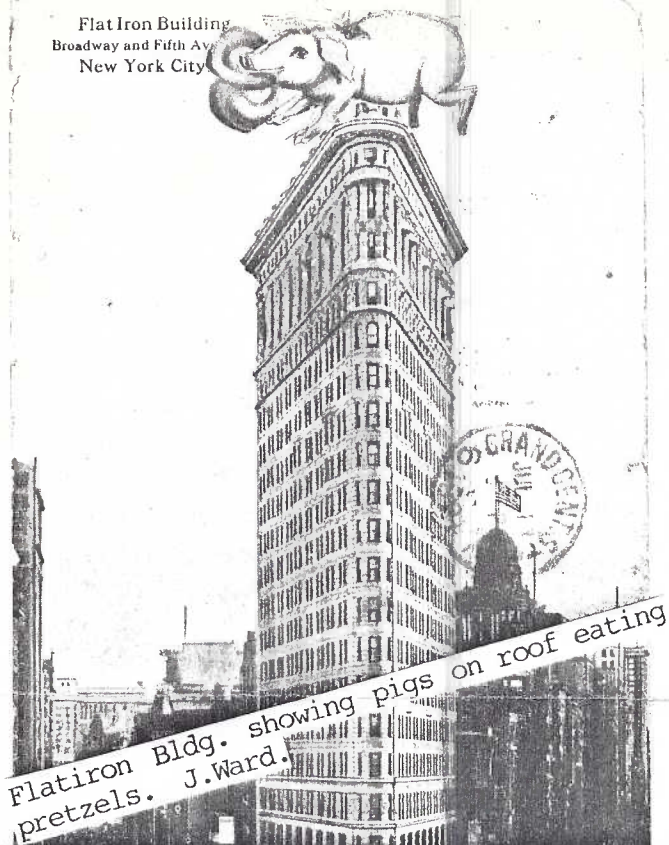
WELCOME, NEW MEMBERS

- #76 FRED WALTMAN - Lanc. City & County
- #77 CHARLES HEIM - Sm. local towns west of Lancaster
- #78 BARBARA HEIM - Ditto Chas.' list.

Come 'spook' with us on Oct. 15th!

Correspondence address: P.O. Box 300, Lititz, Pa., 17543-0300. (Same address for President Jim Ward phone 717-626-4660.) Other elected officers: Elizabeth Graver, Secretary; Charles Griffiths, Treasurer. Appointed officers: Directors- Earl Carver, Don Davis, Dan Good. Publicity: Shirley Neidermyer. Exhibit Boards: Dede Schaeffer. Librarian: Alice Goddard. Greeter: Mary Darrenkamp. Membership: Earl Carver. Mailing: Peg Hanna and Helen Hellingner. 50/50: Harry Lines and Anne Steinberg. Historian: John Long. Auctioneers: Gordon McKinzie and Jerry Wenger. Newsletter: Jim Ward.

Flat Iron Building
Broadway and Fifth Ave.
New York City



POWER OF ADVERTISING

It was an Aug. want ad. At the Sept. LCPC meeting my heart's desire was handed me by Daisy Schaeffer - Finder Par Excellante! For once I was speechless! Now, do I keep it in my Pig collection or my Pretzel collection (which has nearly 50 cards!)

LANC. FIRE HOUSE PC PRICE SCHEDULE

Complete set of (6) cards: Engine Co.1,2,3, 4,5 and Truck Co. A = \$150. (First set to ea LCPC member, \$100.) Single steamer engine cards \$10; horse-drawn card \$20. The #2 Co. is sold only in sets.

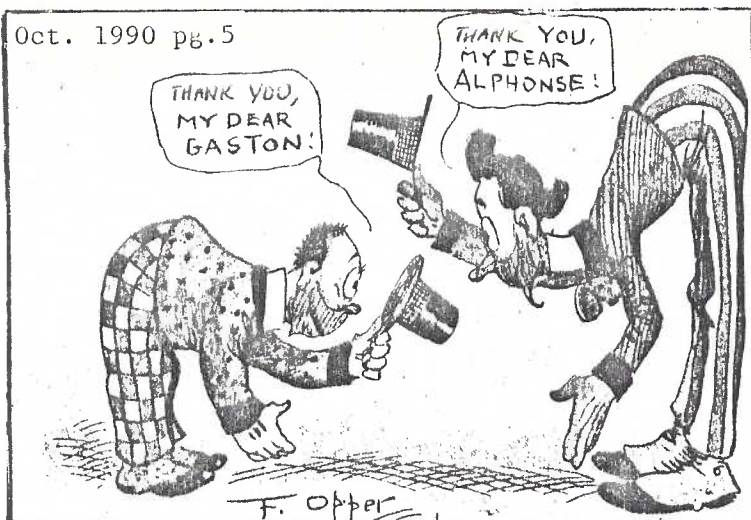
The second group of cards I purchased along with the above Fire House cards, by the same local photographer - Chas. O. Lynch*: MOOSE HALL (Set of 7 postcards) incl. Exterior and these six interiors: Grill Rm., Dining Hall, Ladies Parlor, Lodge Rm., Reception Hall and Reading Rm. Set of 7 is \$2, with first set to ea. LCPC member \$1.

Jim Ward, P.O.Box 300, Lititz, Pa., 17543-0300, phone 626-4660. Limited quantities.
*A short biography of Mr. Lynch will appear in a future LCPC Newsletter.

THREE CHEERS FOR THE AUCTION COMMITTEE!!!

Auctioneer-MERV WENGER, Runners-DALE WENGER, and PAUL WEIDMAN, Clerks-SHIRLEY NEIDERMYER and JERE GREIDER, Cashier-CHARLIE GRIFFITHS. A great crew ...and DALE was only a guest!

Oct. 1990 pg.5



THANK YOU, THANK YOU, THANK YOU

DEDE SCHAEFFER - For the latest contribution to our Library: HALLOWEEN WHITNEY LIST. There are 51 pages, fully illustrated, by this publisher (often noted for their Valentine postcards). Take a look!

CHARLES GROFF - For donating his half (\$18) of September's 50/50 to our Treasury!

HELEN HELLINGER - For donating \$20 in US mint stamps to be used for LCPC postage!

JIM RUDISILL and JOHN LONG - for their terrific contributions (artwork and photography/printing respectively) on our new Monthly Exhibit Board Awards.

We thank you all. You're the kind of members that make our Club work.

CALL FOR CAROUSEL AND SCREEN

Having a Kodak Carousel projector and large screen is becoming vital to our wonderful program presentations. If you know someone who no longer uses their old Carousel and wishes to find it a good home. LCPC is it!

A screen larger than 40"x40" would also be appreciated. If either are in good working order and inexpensive we could consider purchasing both.

ROOM RENTAL PAID

On Sept. 26, 1990 we made a cash payment to the Manheim Twp. Supervisors of \$50 for use of their facilities for six (6) months (Apr. through Sept.) They happily accepted our accompanying letter of thanks and gave us a receipt. Although they wouldn't promise, they felt there would be no problem in finding a place for us to meet either in the new facilities (under construction) or where we presently meet.

COST INCREASE IN NEWSLETTER

It was not evident at the outset that 2½¢ per page would not cover the costs of running my copy machine (Sanyo #802). But with replacement of toner and maintenance charges over the past year or so, I realize that when ACM (where I buy most of my office equipment) had raised their "cost-plus" charge from 3¢ to 5¢ per page they were more realistic than I.

What I'm trying to say is, I must charge you (LCPC) 4¢ per page to break even. And that's all I expect. Many of us volunteer our services to the Postcard Club, and that should remain so. But to get my costs from equipment and supplies is another matter. It is the same a being charged for outside materials and postage.

It means that a 2-page Newsletter will cost 16¢ (4 sides @ 4¢ ea.) or the more recent 3-pagers will be 24¢. Add another 26¢ for postage and envelope and the monthly LCPC Newsletter costs about 50¢ x 12 issues = \$6.00 per year. No need to raise dues. All suggestions welcomed. (Jim Ward, editor, printer, etcetera).

DUES FOR 1991

Treasurer Charlie Griffiths reminds us that 1991 dues will be accepted at any time. They remain at \$7 per person or \$10 per family (one address/one newsletter).

Persons joining during the Last Quarter (Oct-Nov-Dec) have their 1991 dues included.

**FREE 1991 DUES****An Unannounced Blue Light Special!**

(K-Mart has nothing on us!) The member who sponsors the most NEW MEMBERS between Sept. meeting and December 31, 1990 will have his or her 1991 dues paid!!

This contest will also hasten our membership to 100! Can we reach this neat round figure IN OUR FIRST YEAR? Let's all try to make it our goal! 100 MEMBERS IN LCPC'S FIRST YEAR OF POSTCARDING!

Membership now stands at 78..just 22 to go! Bring 'em as a guest..they're sure to join!

MORLATTON POST CARD CLUB**Thanksgiving Weekend Show****Hear Ye!****Post Card People**

Dealers from U.S. & Canada Will Supply
Desired Subject Cards to Customers

NEW LOCATION

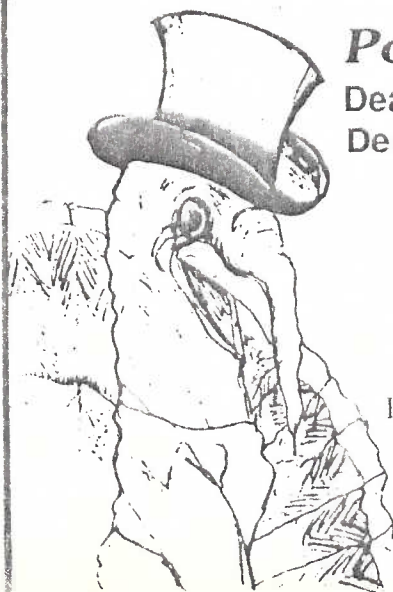
Willow Valley Family Resort
and Conference Center
2416 Willow Street Pike
Lancaster, PA 17602

Friday, Nov. 23, 1990 10 A.M. to 7 P.M.
Saturday, Nov. 24, 1990 10 A.M. to 5 P.M.

For Information Call:

M. W. Hall, Show Chairman, Ph. (803) 387-6062
Anne Darrah, Show Secretary, Ph. (215) 582-4810

Admission
\$1.00
with card
.75



PAID ADV.