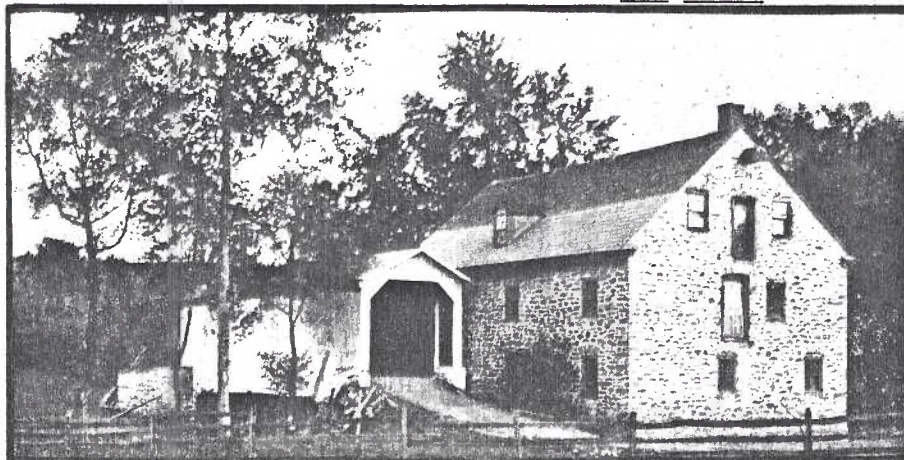


Dear fellow member and future members,

Our LOGO CONTEST concluded at the March meeting and the winner from five entries was Donald Davis with the fine entry you see here. Thanks, Don. We'll be seeing this many places!

Our third (March) meeting was attended by an enthusiastic group that filled the Stauffer Mansion room from wall to wall. We were pleasantly entertained with beautiful EASTER TRADITION cards by Anne Steinberg who gave a running commentary filled with lots of unusual facts, including witches! Witches, according to Swedish tradition, gather on Maunday Thursday (before Easter) in magical Blakulla with their black cats, brooms and especially coffee pots! If you missed this program - shame! Anne even had follow-up postcards 'boards' showing the program cards. Don't miss April's program!

April 16 (notice - the THIRD Monday) will feature a fine presentation by member Mary Darrenkamp. Mary is also a member of the Theodore Burr Covered Bridge Society and has an excellent selection of local covered bridge postcards and facts to share with us.



- D.B.Landis
1908

If you're a Lancaster native and over 35, you'll remember this familiar sight. The scene is a half mile south of Maple Grove pool. The small (55') covered bridge was built about 1868 by Capt. Elias McMellen. John Stoneroad, who was an owner of the mill, purchased the bridge from the County for \$1. It was later owned by George Mann,

YOU ARE INVITED TO JOIN THE NEW Lancaster County Post Card Club

MEETINGS - THIRD MONDAY EACH MONTH

1821 Municipal Drive, Lancaster, PA

Manheim Twp. Municipal Bldg., Rt. 272 half mile north of Rt. 30.

(Turn west opposite McDonald's).

Business Meeting and Educational Programs begin at 7 p.m. Member Postcard Bourse before and after meeting. Annual dues \$7 or \$10 per family. Write: P.O.Box 300, Lititz, PA 17543



A REAL-LIVE POSTCARD-SIZE ADVERTISING FLIER!!

Dog-gone if good 'ole John Long didn't come up with a very professional looking job just in time for the Morlatton P.C.Show where over 400 were picked up by interested collectors. Another 200 have been given to local dealers. Pick up your share and hand 'em out! Invite your friends!!

Also, ask for LCPC MEMBER APPLICATIONS AND CARRY A FEW WITH YOU!

CHARTER MEMBERSHIP

At March meeting the membership voted to cause themselves and all paid members to that date to become CHARTER MEMBERS of The Lancaster County Post Card Club.

Those present also, at the President's personal request, allowed him to number the first seventeen (17) members in sequence-according to when he contacted each of them, as they all gave full approval for his idea of a club formation and (in his words) "were the encouragement which caused us all to be here tonight".

Beginning with #18, members are listed alphabetically and chronologically.

1 Jim Ward	12 Helen Hellinger	23 Robert Vaux Roop
2 Daisy Schaeffer	13 Anne Steinberg	24 Paul Weidman
3 Dedre Schaeffer	14 Howard Steinberg	25 John McClintock
4 Charles Griffiths	15 Elizabeth Graver	26 Harriet Burkholder
5 Daniel Good	16 Tom Beck	27 Ronald Burkholder
6 Gerald Hostetter	17 Jere Greider	28 Mary Darrenkamp
7 Bernie Heisey	18 Earl Carver	29 Gail Foulk
8 John Long	19 Donald Davis	30 James Luty
9 Mervin Wenger	20 Darlene McMullin	31 Gordon McKinzie
10 Shirley Neidermyer	21 Jim McMullin	32 Paul Smoker
11 Margaret (Peg) Hanna	22 Steven Mummert	

MEMBERSHIP ROSTER CONTINUES (including CHARTER MEMBERS)
(to March 26, 1990)

- 33 SYLVIA HILBERT - Valentines; shore-lines (mainly New Jersey)
 34 NANCY GAMBLER - Lebanon City and County
 35 AIDA RODRIGUEZ - P.C. Dealer with husband as The Cartophilians from Connecticut
 36 JOSE RODRIGUEZ - U.S. Expos.; mail delivery deltiology; Conn. P.O.'s; Lanc. Co., esp. eastern end
 37 HELEN COX - General postcards
 38 ROY COX - publisher of current Postcard books; former publisher of Postcard Magazine; founder, co-founder of numerous East Coast P.C. clubs; co-founder I.F.P.D.; veteran dealer
 39 ROBERT LIEBERHER - General postcards
 40 ROBERTA CHANTILES - York City and County; Greece; 1990 President of York Postcard Club
 41 HAROLD DURBOROW - Lancaster County and General postcards
 42 ALICE GODDARD - General postcards
 43 JERRY KOTEK - York County; Czechoslovakia; Niagara Falls; Co-founder York Postcard Club
 44 ROBERT KRAMER - General postcards
 45 CHRIS LANDIS - Covered bridges; European countries; wildlife
 46 ELAINE BUCK LEVINE - Harrisburg and environs; dressed animals; Harrison Fisher; local dealer
 47 HARRY LINES - Lancaster and Millersville
 48 WILLIAM SEIGFORD - Railroad related; trolley and circus; esp. Penna. Railroad postcards
 49 SANDRA SHAUB - Holidays, birthdays, best wishes, etc.
 50 BETTY SOWERS - General postcards
 51 EUGENE SOWERS - General postcards
- Editor's note: "General postcards" has been used where interest was unknown, not on application or a beginning collector.

All members take note: In June or July's Newsletter we will recap the entire membership roster. If you wish to add to your collecting list, delete or make other changes, please let me know by May meeting. And for the benefit of any member who wishes to make a contribution to our Newsletter phone or write: Jim Ward, P.O. Box 300, Lititz, Pa., 17543. (Area 717 626-4660). It's your Club, let's have your suggestions and thoughts, jokes or postcard facts.

HISTORIAN

I have asked John Long to be Historian for the remainder of my term. John will welcome any Lancaster County Postcard Club news articles, photos, etc. which you feel we will be proud to look back upon years from now. Those first few months of a beginning organization can be loads of fun and full of fond memories years from now.

John is that 6'3" handsome blond who usually has one eye closed (resting it).

PHANTOM BOX

A very light-footed phantom dropped a box of postcards on a table at the March meeting. Several lady members were able to find a dozen or more they'd like to purchase (in the neighborhood of \$125-\$140) but don't know to whom the money should go. Phantom - please show yourself. If you intend the Club to have the proceeds, let it be known - somehow!

NATIONAL POSTCARD WEEK

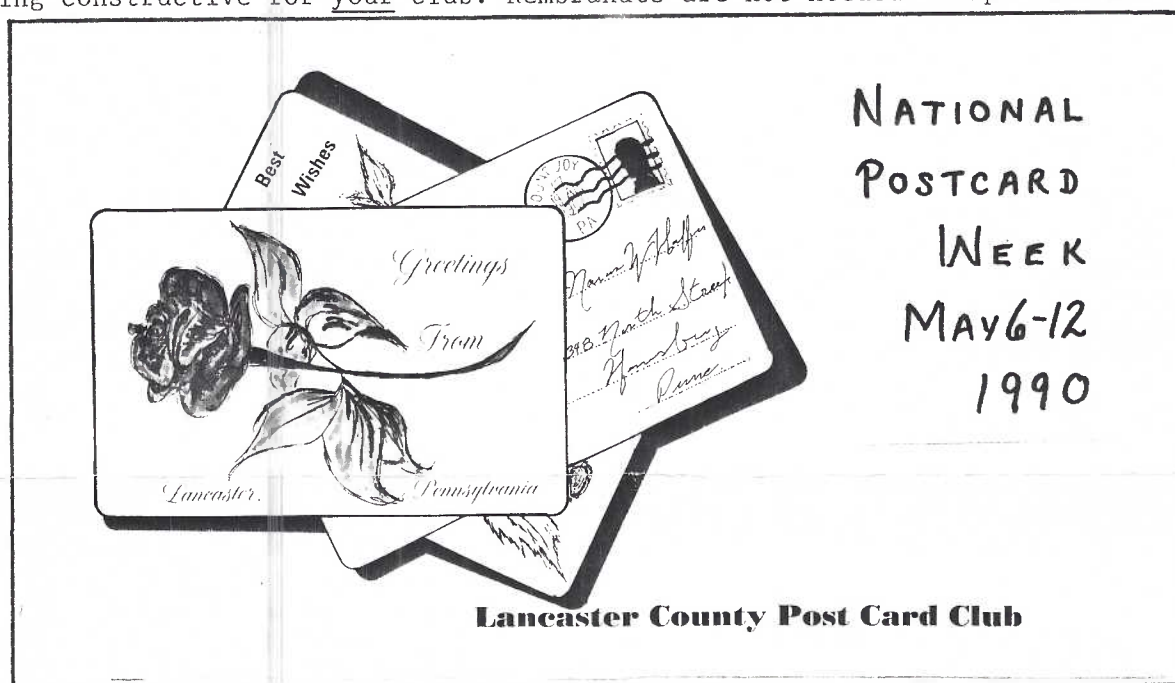
May 6-12, 1990 is National Postcard Week. This is an annual event to celebrate postcard collecting - a time to exchange postcards with your friends; promote our hobby; show others how much postcard collecting can add fun to your life as well as be educational.

My second brain and your Treasurer, - the Wizard of Millersville, Charlie Griffiths, just came up with a tremendous idea! Why not let the rest of Lancaster County and Pennsylvania and the USA know about us with our own entry into the Postcard Arena? And why not use the entry member Robert Vaux Roop made to the logo contest? The perfect size for reproducing, a very professional piece of artwork - all ready for production.

It will require work from members, though.

1) We need someone to write a short news release and send it to the two major postcard publications as well as the local media. (An hour of composition; I'll duplicate copies; then another hour to fold, stuff, address and stamp.)

2) Before the above is done, how about a little paint session of 5 or 6 members? John Long believes much money can be saved by printing the card in black and white and then we can add the red to the rose and green to the leaves - just like we used to do with our paint books. Remember them?? This will not be a difficult jobs, folks. But in order to print several hundred the job will go very fast with lots of help. Here's a chance to do something constructive for your club. Rembrandts are not needed! Help! Call me!!



AUCTION FOR JUNE

The discussion of a possible auction within the Club brought positive reaction from enough members that we will distribute Auction Consignment sheets at the April meeting. Take the sheets home, write up descriptions of your lots (up to 10). They can be single, good cards or groups of cards. Whatever the lots bring, the Club will receive 25¢ commission from each lot. Sheets and cards should be brought to the May meeting. A descriptive Auction List will appear with the June Newsletter and the lots previewed before and during the June meeting. We need an Auction Committee: Auctioneer and two clerks. The amount of lots will determine whether we have an Educational Program that meeting.

Postcard lots will be kept under alarm system from May to June in an hermetically sealed burglar safe the combination of which is guarded by Funk and Wagnall, etc. etc.

BEGINNER'S BLACKBOARD

MINT - perfect card; no marks, bends, creases. No writings or postmarks.

NEAR MINT - Very little aging or slight discoloration from being in album many years.

EXCELLENT - no bends, creases; no rounded or blunt corners; postally used is OK; fresh.

VERY GOOD - corners a bit blunt, rounded; almost undetectable crease or bend; collectible

GOOD - corners noticeably blunt, rounded; noticeable slight bends or creases.

AVERAGE - creases, bends pronounced; writing in margins; corners rounded; p.m. shows through

POOR - card intact; excess soil, stained, cancel may effect picture; writing on either side.

WASH THIS SLATE WITH A WET RAG

Made by supplement to Heart's Boston American

BARR'S POST CARD NEWS and the POSTCARD COLLECTOR each use a grading scale similar to this. Most important to remember is how you grade a card and what standard you set for yourself.

Buying through mail auctions is where grading scales become a priority - both the buyer and seller must agree. If you are a beginner, you should probably see what you are buying.

NEW MEMBERS - If you'd like back issues of the Newsletter, they'll be at the April meeting.

LIBRARY

Folks, you have a tremendous postcard club, in case you didn't notice! At last month's meeting we had a \$10 donation to begin a Library Fund from Aida and Jose Rodriguez. Less than 30 days later, we have a Library of twelve books - all donated by willing members!

At the April meeting the following books are at your disposal. You may use them at the meeting or check them out for up to thirty (30) days. Some are new. Some are used. Please care for them as if they were your own. Thank you, everyone.

- A PENNSYLVANIA ALBUM - PICTURE POSTCARDS 1900-1930 (Miller, Geo.) 1979. 160 pgs. of excellent b&w views and descriptions; outstanding research on our social history. (J)
- COLLECTORS GUIDE TO POSTCARDS (Lyons, Forrest, Jr.) 1974. 128 pgs. b&w illus. price guide; categorized postcards incl. greetings, signed artists, etc. (C)
- COLLECTORS GUIDE TO POSTCARDS, THE (Wood) 1987. 175 pgs. b&w and colored illus. price guide; expanded and updated version of Lyons Guide (which see). (H)
- LINCOLN POSTCARD CATALOGUE (Lowe, Jas. L.) 1967 1st ed. 65 pgs. Lincolniana incl. b&w views as well as greetings; extensive publisher listings, prices by a veteran postcard author. (C)
- OLD NEW JERSEY POSTCARDS (Lanz, Phyllis) 1977. 32 b&w postcards (detachable and mailable) please leave cards intact. (D)
- PATRIOTIC POSTCARDS (Kaduck, John) 1974 1st ed. 67 pgs. over 1,000 b&w illus. cards with prices, incl. appropriate holidays and political cards. (D)
- PICTURE POSTCARDS IN THE UNITED STATES 1893-1918 (Miller, George & Dorothy) 1976 1st ed. 280 page hardcover with b&w and colored illustrations; undoubtedly the most informative, comprehensive book on our hobby to date; in-depth commentary by two of the best recognized students in deltiology; "must reading" for beginner and advanced collectors. (D)
- MAIL MEMORIES (Kaduck, John) 1971 1st ed. 68 pgs. 1,500 b&w illustrations with prices incl. views and greetings. (two copies) (D)
- RARE & EXPENSIVE POSTCARDS - BOOK II (Kaduck, John) 1979. 134 pgs. of color and b&w illus. and prices covering most postcard categories. (two copies) (H and D)
- TRANSPORTATION POSTCARDS (Kaduck, John) 1976 1st ed. 92 pgs. b&w illus. with prices incl. horsedrawn vehicles, early flight, autos, fire engines, ships, farm equipment. (D)

MEMBER DONORS TO LIBRARY

(H) Helen Hellinger, (D) Dan Good, (C) Charlie Griffiths, (J) Jim Ward. Many thanks to to these people and a warm welcome to other members who wish to share. Duplicates invited.

This spot could have been yours. Do you have any particular wants? something special to sell? Would you like trying the Librarian job? We can use you.

Don't forget, we now meet the THIRD Monday of each month. NEW LOCATION on map (pg.1). BONUS for all members present when the April 16 meeting starts at 7 p.m. sharp!!!