

# THE CARD – Vol. 29, No. 9, Issue 330, September 2018

A Publication of the Lancaster County Postcard Club, Lancaster, PA

*Enjoying postcards through education and entertainment.*

LCPC 26<sup>th</sup> Annual Postcard Show – August 18, 2018

Like us on Facebook – [www.facebook.com/LCPClub](http://www.facebook.com/LCPClub).

<http://www.lcpc-stamps.org/newsletter-archive/the-card/>

## 2018 EXPO

The 26<sup>th</sup> Annual Postcard EXPO was held on Saturday, August 18, 2018 at the Farm & Home Center. Jere Greider reports that the Expo was a success all the dealers and collectors he talked to were very pleased. About 220 postcard enthusiasts came through the door. Jere wants to thank all who helped on Friday setup and during the show on Saturday. He was told by one dealer that does many shows that this was their best club sponsored show. Also thanks to all the members who helped with the Friday night setup and those who helped on Saturday at the club table. A full report will be given at the meeting. A BIG THANKS GOES TO THE JUDGES!!

Louise Wile  
Bob Dissinger  
Brian Frankhouser



## MEMBER NEWS



Howard Campbell, member #853, passed away Sunday, August 12, 2018. He was the husband of Shirley Gerlach Campbell (member #854) for 47 years. Our sincere sympathy to Shirley and her family.

## FUTURE SHOWS

**September 22 & 24** – Garden State Postcard Club Annual Show, P.A.L. Center, 33 Baldwin rd., Parsippany, NJ, \$3.00 for one day, \$4.00 for 2 days

**September 30** - Upstate N.Y. Post Card Club Annual Show, Jewish Community Center, 2565 Balltown Road, Schenectady, NY, Saturday 9 – 4, Adm. \$3.00

**October 6 & 7** – Allentown Fall Antique Advertising, Book, Postcards, Photography & Paper Show, Allentown Fairgrounds, Allentown, PA, Sat. 9-5, Sun 9-3, Adm. \$10.00

**November 16 & 17** – York International Postcard Expo, York Fairgrounds, Horticulture Hall, York, PA, Fri. 9-7, Sat. 9-5, Adm. \$5.00, good for both days

**November 23 & 24** – Lancaster Fall Postcard Show, Farm & Home Center, Fri. 10 – 5, Sat. 10 -4, Adm. \$2.50

## 2018 POSTCARD COMPETITION SUBJECTS

**September** – County Fairs

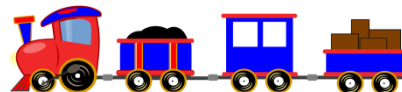
**October** – Farm Animals

**November** – Thanksgiving - **BOARD**

**December** – Children Playing

## SEPTEMBER PROGRAM

Leighton Stover will share his love of trains and railroads through a series of postcards.



## 2018 PROGRAMS

**October** – A Mostly Trivial View of our U.S. Presidential Families - Don Tribit

**November** – Christmas Traditions on Postcards

**December** – Christmas Party

## 2018 EXPO EXHIBIT BOARDS

### PENNSYLVANIA VIEWS

<b>First:</b>	Cheryl Edwards	Tioga County Views
<b>Second:</b>	Don Brown	Names from Williamsport
<b>Third:</b>	Bud Heim	Harrisburg – The Capital of PA

### REAL PHOTO

<b>First:</b>	Cheryl Edwards	Antique Spots
<b>Second:</b>	Bud Heim	Bainbridge & Billmyer
<b>Third:</b>	Dolores Rowe	Windows on History
<b>Honorable Mention:</b>		
Ed Close	Wrecks of the PRR 1905-1924	
Nelson Calkins	Photographic Postcards	

### TRANSPORTATION

<b>First:</b>	Don Brown	Premier Auto	Ocean to Ocean Tour
<b>Second:</b>	Ed Close	Wrecks of the PRR 1905-1924	
<b>Third:</b>	Ken McClain	Transportation Sea-Land-Air	
<b>Third:</b>	Dolores Rowe	Ding, Ding, Ding Goes the Trolley	
<b>Honorable Mention:</b>			
Susan Glass	Cats Travel By Land, Sea & Air		
Bud Heim	Some Local Railroad Stations		

### ADVERTISING

<b>First:</b>	Cheryl Edwards	Fralinger's Salt Water Taffy
<b>Second:</b>	Dolores Rowe	Time for a Cold One
<b>Third:</b>	Don Brown	Designer Board Hotel
<b>Honorable Memories:</b>		
Ken McClain	A Lifetime of Advertis	



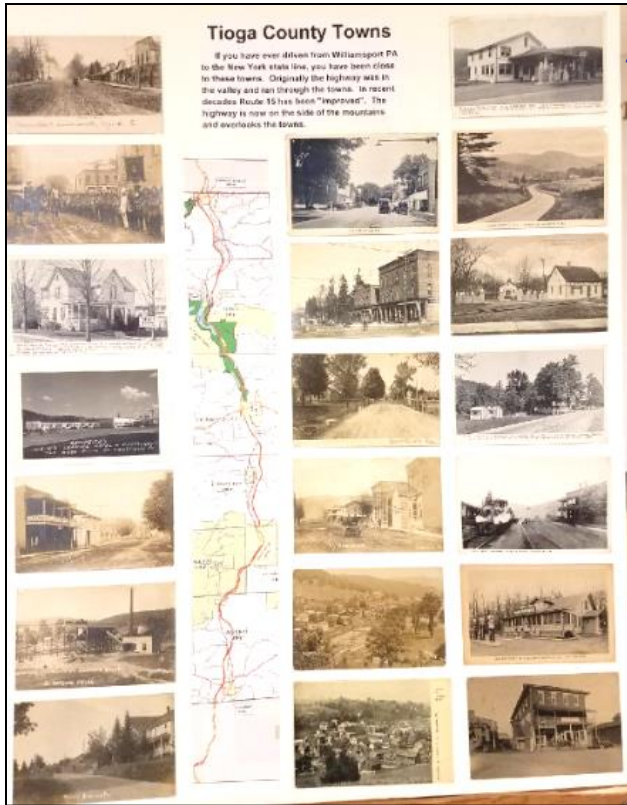
### BEST OF SHOW

★	Cheryl Edwards	Antique Spots
---	----------------	---------------

### PEOPLES CHOICE

★	Cheryl Edwards	Antique Spots
---	----------------	---------------

## PENNSYLVANIA VIEWS



## REAL PHOTO



## TRANSPORTATION



## ADVERTISING




## LABOR DAY SMILES



Labor Day, the first Monday in September, is a creation of the labor movement. On this day, Americans honor the country's workforce (and the end of summer). However, while most of us enjoy a **day** off, millions must continue to **work**. These workers, while being saluted, **do** not get to celebrate themselves. Americans from all walks of life keep the country going over the three day weekend.

These light-hearted postcards (drawn by artist Ray Cale) were submitted by Jim Ward and show a working candy striper caring for several of the dwarf workforce of Sleeping Beauty fame. Can you name them?



Post CARD		 <small>U.S. PRETZEL POSTAGE</small>
MESSAGE	ADDRESS	
<small>ARTIST - RAY CALE PUBLISHER - JIM WARD - 2015</small>		

## PIERROT ON POSTCARDS

By Jim Ward

Originally he wore neither collar nor hat; only a black skullcap. His name means "Little Pierre." He appears to be naïve – even a fool – the butt of pranks, yet trusting.



Pierrot's original skullcap was soon discarded as his character moved to England, Belgium, Germany, Russia, and eventually America. His naiveté succumbed to love, seduction and the ribald, most with a pointed cap not unlike that of a dunce.

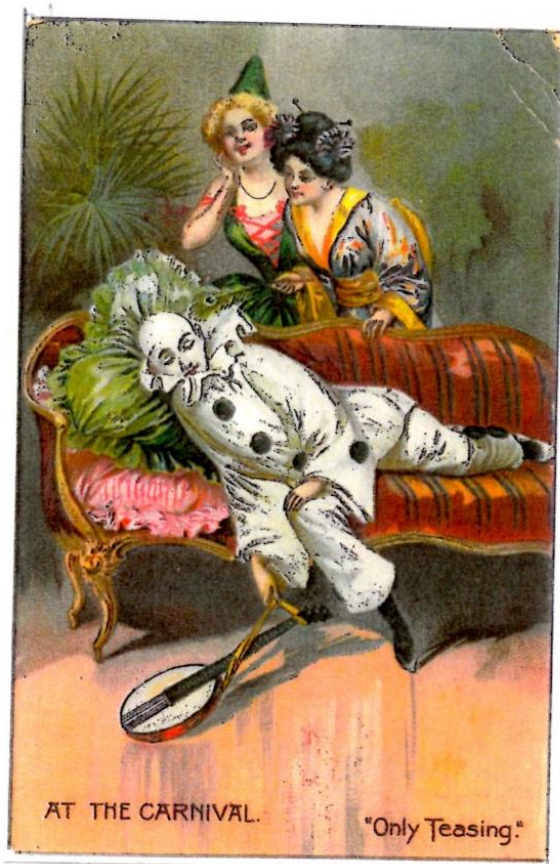
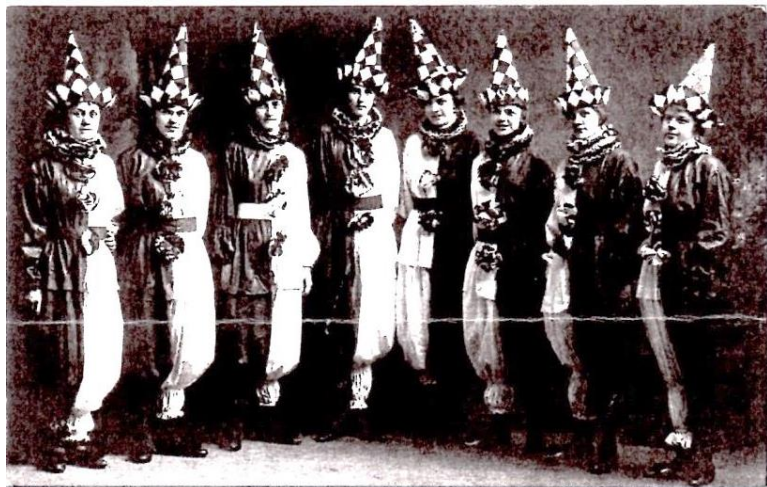
Pierrot postcards are not easily found. Our samples were under Holidays, Clowns, Children, Costumes, Romance and even Real Photo. Good Luck!



Pierrot is a product of the early 1700s and, as his name suggests, from France. He has been the subject of poems and plays, paintings and postcards, and it's on these latter issues we focus our attention.







# Pennsylvania Views – Cheryl Edwards

## Tioga County Towns

If you have ever driven from Williamsport PA to the New York state line, you have been close to these towns. Originally the highway was in the valley and ran through the towns. In recent decades Route 15 has been "improved". The highway is now on the side of the mountains and overlooks the towns.



# Real Photo – Cheryl Edwards



## Antique "Spots"



## Transportation – Don Brown

### PREMIER AUTOMOBILE OCEAN TO OCEAN TOUR 1911



## Advertising – Cheryl Edwards



### Fralinger's Salt Water Taffy



This set of advertising cards features artwork by Clara Bird. Each card has an illustration and caption based on a children's verse or story that has been altered to include a box of Fralinger's Salt Water Taffy.

As you cut out on the back of the card, if a person collected all 24 cards spelling out 'Fralinger's Salt Water Taffy' they could turn the cards in for a free five pound box of taffy.

