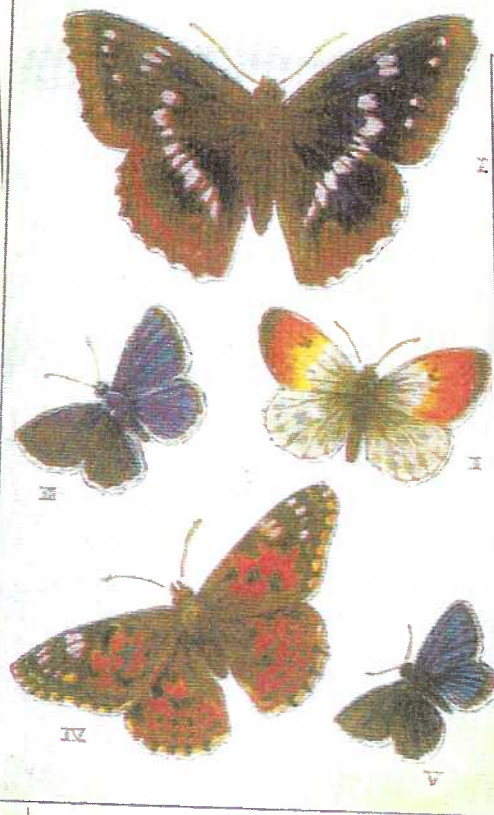
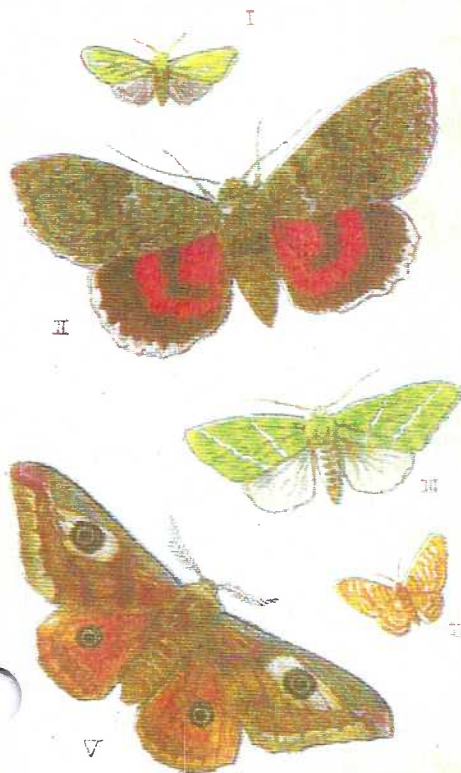
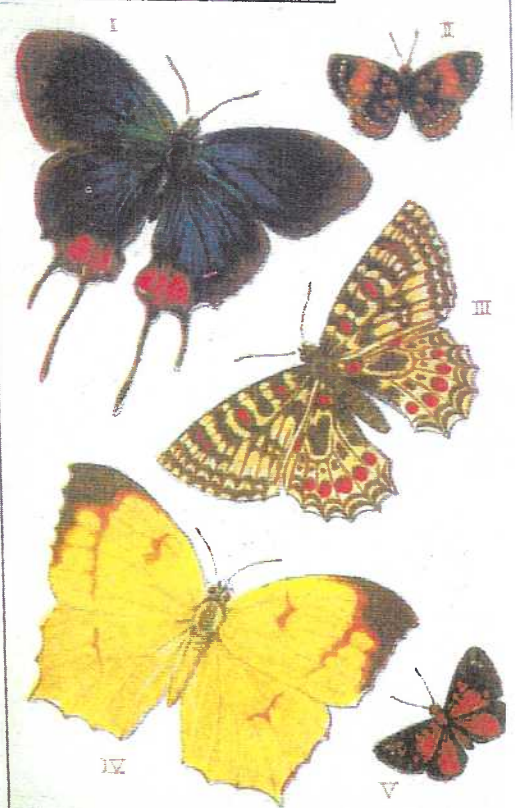
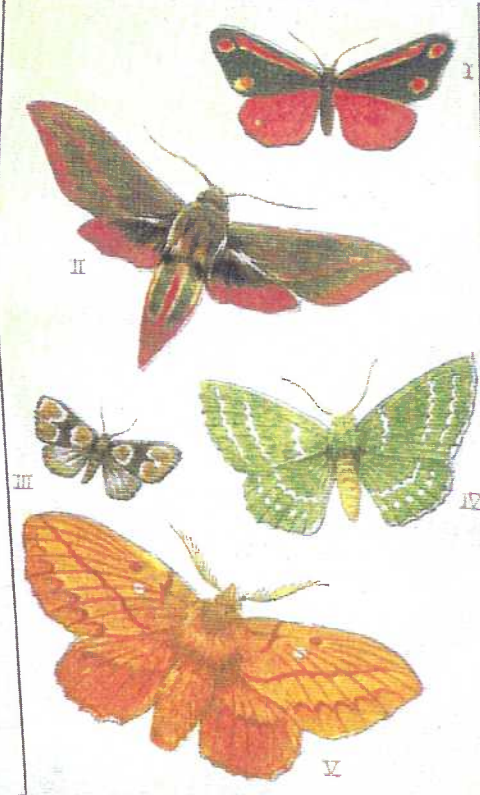
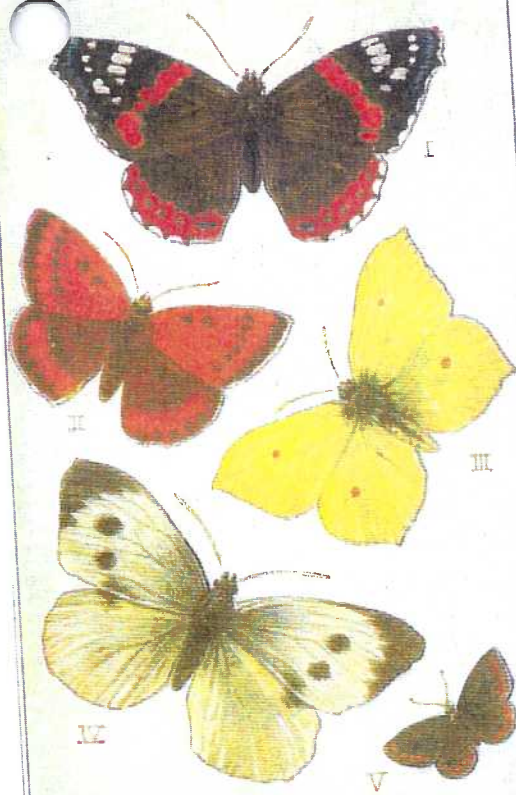


THE CARD Vol. 12, No. 6. Issue 138. *Enjoying postcards through education and entertainment.*

Monthly publication of The Lancaster County Postcard Club, Lancaster, PA.

Next meeting: Sat., June 16, 2001. Annual Picnic - this year at the home of the Heims - 1 PM.

Club and Editor's address: LCPC c/o Jim Ward, 1795 Kleinfeltersville Rd., Stevens, PA 17578-9669 or midcreek@ptd.net.



American Butterflies

When Mervin Wenger (LCPC #9) handed me the magazine on his recent visit, I was sure it was a special edition of National Geographic. A flip through its interior and I was positive - but wrong. Merv insured me the professional format was a recent improvement in a quarterly begun just eight years ago by the North American Butterfly Association.

The Fall 2000 issue is crammed with gorgeous photos and, as you might expect, in living color. Several articles cover meetings (but include members' butterfly photos) and a photo contest. Featured articles: Eyeing Greater Fritillaries, Autumn Nectar in the Pacific Northwest, the Great Basin National Park and Lifestyles of the Silver-spotted Skipper give you an idea of the scope of this wonderful 48-page magazine.

If you'd like to talk with Merv about the local chapter or wish to know more about the NABA, you can reach him at 1-717-626-5814 or try e-mail at naba@naba.org. The NABA's home base is 4 Delaware Rd., Morristown, NJ, 07960, www.naba.org. Subscriptions are \$24 a year for the quarterly.

OUR COVER POSTCARDS

Following a series of posters that feature local fauna, The Wild Resources Conservation Fund has issued its latest poster "Adult and Larva of Moths of Pennsylvania." Lancaster's "Moth Man", John Laskowski, authored the poster and Jeff Lepore supplied most of the beautiful specimen photos.

Butterflies on the Wing

Our contribution to this beautiful subject is a set of Tuck Oilette postcards. The six cards are all numbered 3390 and comprise Series I, *Butterflies on the Wing*. The Tuck firm, on the paper packet in which the postcards were issued, describes the set as "A Novel and Highly Interesting Pastime for Young and Old." The novelty of the cards is that the insects' "outlines are perforated so that the wings may be easily bent upwards giving the butterfly its natural flying appearance. Cut away from the postcard in this position, and placed on a dark background with a pin inserted through the body, a realistic collection of thirty different butterflies and moths can be formed with this single packet of six postcards".

As you might suspect, many of these cards were thus destroyed and so the value of the remaining cards, and especially sets, is high.

Identification

Here are their names (some common, some scientific).

Top left - British Butterflies I Red Admiral, II Large Copper, III Brimstone, IV Large White, V Brown Argus.

Top center - British Moths I Cinnabar, II Elephant Hawk, III Marsh Carpet, IV Large Emerald, V Drinker.

Top right - Foreign Butterflies I Evening Regalis, II Lemonias Emylius (female), III Thais Medesicaste, IV Dercas Vorhueli, V Lemonias Emylius (male).

Lower left - British Moths I Forester, II Red Underwing, III Scarce Green Silver Lines, IV Small Yellow Wave, V Emperor.

Lower center - British Butterflies I Purple Emperor, II Orange Tip, III Blue, IV Painted Lady, V Maxarine Blue.

Lower right - Foreign Moths I Diacrisia Sannio, II Sangala Gloriosa, III Euechromia Siamensis, IV Miniodes Discolor.

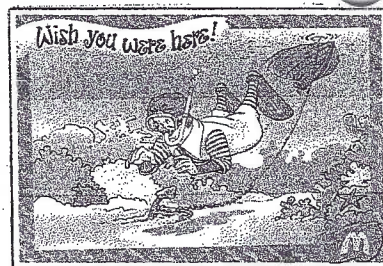


Two Eastern Tiger Swallowtails (male on rt.) and a Great Spangled Fritillary feed on butterfly bush (*bud-dleia*) in the editor's yard. ID by Merv, photo by JW. It became a PC by adding a peelable PC back.

In the News

Dining at Mickey Dee's

Kokomo, IN, will be the site of the first "McDonald's with a Diner Inside." The leader in fast food for more than 45 years has sought a wider market by offering a sit-down "timeless diner" menu that boasts 122 items for breakfast, lunch and dinner. Typical diner fare like meatloaf with two sides and chicken and turkey pies promise to stay in the family budget range of \$5 to \$10. We show a give-away postcard McDonald's offered several years ago. The marine scene contained only Ronald and his boat until a child added the accompanying stickers as shown here. Give-away postcards often become throw-aways. Popular subjects are tomorrow's keepsakes.





THIS CARD IS FOR ADDRESS



FIRST DAY OF ISSUE
—A.S.D.A. NATIONAL POSTAGE—
—STAMP SHOW STATION—



This postal card was issued two months in advance of the rate increase as a reminder of the change from 1¢ to 2¢ on Jan. 1, 1952. The First Day of Issue was cancelled at the A.S.D.A. National Postage Stamp Show Station in NY, NY, on Nov. 16, 1951. Our in-club member actively interested in such philatelic items is past president Bob Kramer. Bob will be happy to help you if you have questions about stamps, your wants or stamp-related items to sell.

The Penny Postcard

Source: *United States Postal Card Catalogue*, US Postal Stationery Society, 50th Anniversary Edition, 1995. Comments raised by LCPC members, Norman Zimmerman, #168 and Bob Kramer, #44, prompted a trip to the Internet for an up-dated history of the rates incurred by the penny postcard.

For most of their history, postcards have enjoyed very reasonable postage rates. In fact, the "penny postcard" existed until the early 1950s. Since then, rates have escalated steadily as shown below.

Here is how much it cost to mail a postcard in the United States over the past 120 years.

On several occasions the rate was actually rolled back! The 1925–1928 rate deserves an explanation. Does anyone have it? No doubt, it's political. Then there was the short-lived 7¢ rate in 1975.

This information can be of help in determining when a postcard was mailed. The posted date, however, may have little or no bearing on the age of the card.

The following are the rates for mailing **postal cards** (gov't. issues) in the United States. Until 1898, **postcards** (private issues) were required to pay letter rates. Thereafter, except for a period noted below, the rates for mailing postcards conforming in size to the requirements of the Post Office Dept. were the same as for mailing postal cards.

- 1¢ - May 1, 1873 – Nov. 1, 1917
- 2¢ - Nov. 2, 1917 – June 30, 1919 War Tax of 1¢
- 1¢ - July 1, 1919 – Apr. 14, 1925 War Tax repealed
- 2¢ - Apr. 15, 1925 – June 29, 1928 Postal card rate remained at 1¢, only picture postcards increased.
- 1¢ - June 30, 1928 – Dec. 31, 1951 Postcard rate reduced to match postal card rate.
- 2¢ - Jan. 1, 1952 – July 31, 1958
- 3¢ - Aug. 1, 1958 – Jan. 6, 1963
- 4¢ - Jan. 7, 1963 – Jan. 6, 1968
- 5¢ - Jan. 7, 1968 – May 15, 1971
- 6¢ - May 16, 1971 – Mar. 1, 1974
- 8¢ - Mar. 2, 1974 – Sept. 13, 1975
- 7¢ - Sept. 14, 1975 – Dec. 30, 1975
- 9¢ - Dec. 31, 1975 – May 28, 1978
- 10¢ - May 29, 1978 – Mar. 21, 1981
- 12¢ - Mar. 22, 1981 – Oct. 31, 1981
- 13¢ - Nov. 1, 1981 – Feb. 16, 1985
- 14¢ - Feb. 17, 1985 – Apr. 2, 1988
- 15¢ - Apr. 3, 1988 – Feb. 2, 1991
- 19¢ - Feb. 3, 1991 – Dec. 31, 1994
- 20¢ - Jan. 1, 1995 – June 30, 2001
- 21¢ - July 1, 2001

NEW MEMBERS

An old friend of your editor's visited after an absence of several years. After seeing several back issues of *The Card* he signed on as a member - **#594 Nicholas Yutko** 407 First Ave., Bethlehem, PA 18018. Ph. 1-610-691-5367. Nick collects Bethlehem and Schuylkill County.

On May 14 this letter was received from Gordon B. Reed - "Newlin Groff frequently shows local postcards to me that he has recently acquired and we sometimes exchange research notes and comments. Recently he showed me a copy of your newsletter and I think it could prove beneficial to the Conestoga Area Historical Society to receive the LCPC newsletter into its research library.

Please accept the enclosed money for dues and enter the Conestoga Area Historical Society as a member of the LCPC.

Also, please extend an invitation to visit the CAHS to all members of the LCPC. We're open Saturday and Sunday from 1 to 4 PM, April through Dec. at 51 Kendig Road, Conestoga, PA. Take New Danville Pike out of Lancaster (Route #324) to Conestoga. At the top of the hill turn sharp right at the Wagon Wheel Restaurant onto Kendig Road. There is no charge for parking and admission is free."

#595 Conestoga Area Historical Society P. O. Box 232, Conestoga, PA 17516.

ED.NOTE: CAHS is our first organizational member. If you know another group that might appreciate membership in LCPC, encourage it to join for just \$8 a year. Thanks, Newt, for your continued efforts in promoting LCPC.

#596 Daniel Allen 258 Harvard St. #244, Brookline, MA 02446. Dealer.

NOTE: As *The Card* goes to press, Dede Schacffer has told us that her mother just went to the hospital for a triple bypass operation following a heart attack. Cards should be sent to 415 Spencer Ave., Lancaster, PA 17603 and Dede will see that Daisy gets them.

We've learned that LCPC Secretary **Mary Ann Guntow** has undergone severe surgery on her spine and is slowly recuperating. Why not drop her a PC at 2440 Ellendale Dr., Lancaster, PA 17602?

Stan Hopkins, our Canadian member, notes an error in our listing of NPW cards last month. His card honored **Ann Rusnak**, author of the NPW checklist for 10 years, not Ann Hopkins.

Don't Forget Fathers Day, June 17

The Card takes a humorous look at husbands

One can only wonder if the artists of these early cards were loving husbands, milquetoasts or confirmed bachelors. Top cards are early renditions of an age-old spousal condition.

The final three comics share a common thought. "Happy Fathers Day" from your editor, a confirmed bachelor.

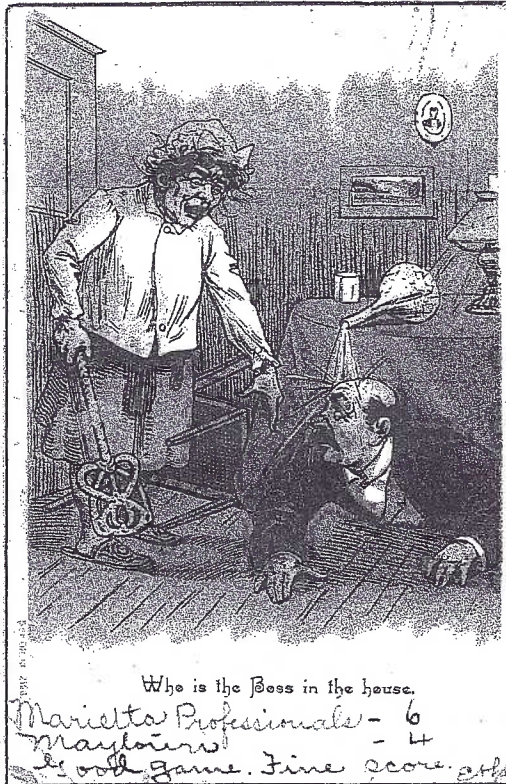


And Don't Forget the Garbage!!

There are lots of beautiful wives about and many have loving dispositions. There are obviously a few shrews out there, too. The back of a view of Deep Creek Dam, Oakland, MD, was filled with instructions from "me". Me evidently went on a short trip (to Mother's?) and left the card (unmailed) in a prominent place. The home and he would be the precisely the same when Me returned.

"Water the ferns and the J. cherry tree as soon as you get home & each day thereafter. I forgot to water them Sat. AM. Wrap the 'leavins' of my new yellow dress in paper. They are on the dining table. Be sure & have one good meal every day at the hotel. Steady diet of toast & eggs is for reducing. If the peaches show signs of wear give some to Fisher's & Gress', am sure you cannot eat them all. Much love from Me.

Much love...if you listen to Me!



"Home Sweet Home"

SERIES A D 1911

it is Home sweet Home



We love each other. as a card to death



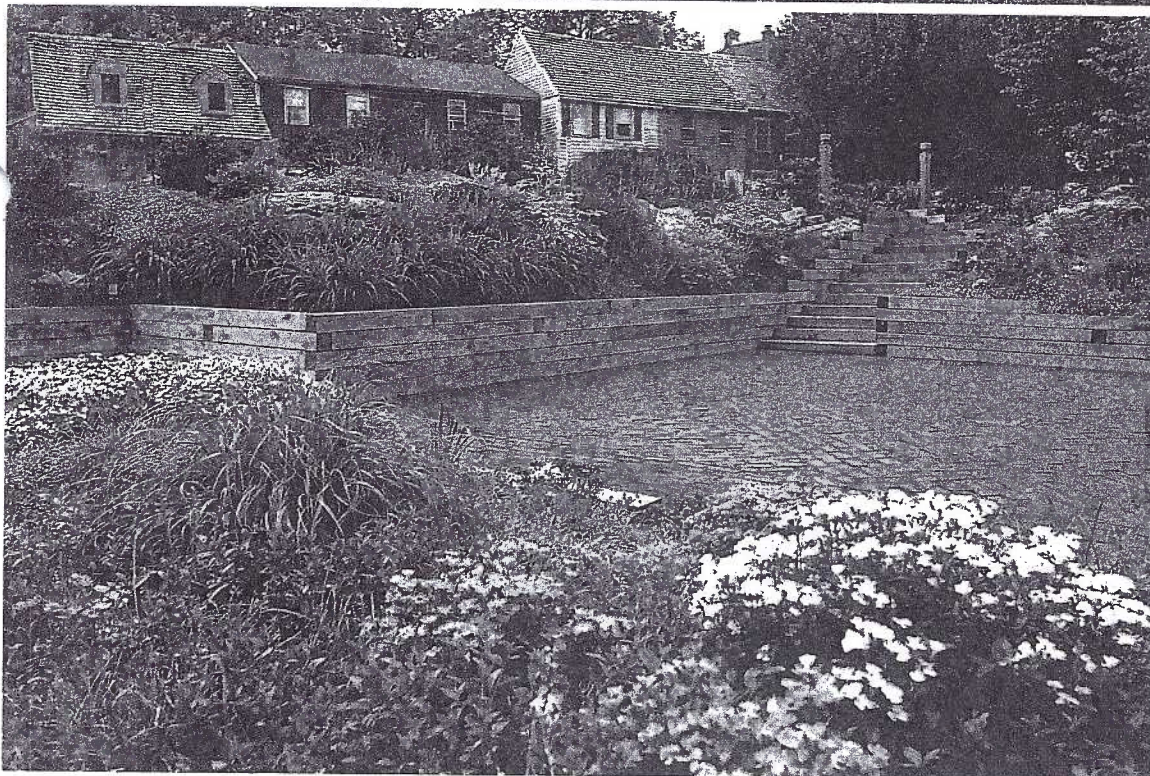
City Card Set

Little publicized set of restored historic district in Lancaster

Bryan Benner offers us data on a great set of five views of the Lancaster City Historic District. They were published by Five-points Neighborhood Assoc of Lancaster, PA and produced by Stewart Graphics also of Lancaster. The color photos were skillfully executed; unfortunately, they're not printed on heavy PC stock.

The buildings are in the old residential area of Church, S. Duke and E. Vine Sts., several blocks SE of Penn Square. Part of the 1970s Old Town Project, 70 homes were restored in the once blighted area. The project received national recognition for the rehabilitation of an inner city neighborhood.

Five Painted Ladies >
Case Commons <



The 5 PCs are available @ 50¢ ea. plus postage. Phone Brandon Stetser, Lanc. 1-717-394-8005.

Captions for the unnumbered 4"x6" cards are in bold type. Descriptions have been edited from information on the backs.

Case Commons – A park in the heart of the district dedicated to the memory of Bob and Chardee Case.

Gundaker Stable – Old Town
A 1790 limestone house discovered just prior to being destroyed by the wrecker's ball

South Duke Street – Old Town
A group of 18th and 19th century row homes with varying architectural styles

The Five Painted Ladies of East Vine Street – Georgian Victorian row homes uniquely set apart by their painted trim

The Garden Homes of Church Street – Colonial period homes with front flower gardens

Local Views

Lancaster City Listing follow-up

Mary Darrenkamp and Bryan Brenner were quick to response to our request for fill-in cards in the March listing of Lancaster City view cards. The front-page article stressed the importance of the Lancaster Square views since there's every possibility some or all of it might be razed in the future.

Here's a complete* list with titles to date. Parenthesis indicates editor's description).

- L-1 Penn Square
- L-2 Lanc. Square (toward Hilton Hotel)
- L-3 Lanc. Square (NW from upper level)
- L-4 Lanc. Square (SE toward fountain)
- L-5 Lanc. Square (So. toward Griest Bldg.)

- L-6 Lanc. Square (NE toward Hilton Hotel)
- L-7 Downtown (Hess Bldg, Green's, etc.)
- L-8 The Lutheran Church of the Holy Trinity
- L-9 Wheatland
- L-10 Fulton Opera House (exterior)
- L-11 Demuth's Tobacco Shop, neighboring bldgs.
- L-12 Lanc. County Courthouse (with new annex)
- L-13 Lanc. Pa. (Old City Hall)
- L-14 Lanc. Pa. (Civil War monument, Watt & Shand)
- L-15 Penn Square (SW quadrant with sculpture)
- L-16 Steinman Park
- L-17 Hotel Brunswick (formerly Hilton Hotel bldg.)
- L-18 Fulton Opera House (interior)
- L-19 Lancaster County Prison

Where's L-20? We can't imagine Skip Dussinger, who published these fine colored views, not having photographed and issued an even number.

President Visits Lancaster Co.

*Conestoga, PA – on the
Route Pres. Bush Drove
to Reach Safe Harbor*

To emphasize the need for more domestic energy, President George W. Bush made a brief visit to the Safe Harbor Water Power Corp. Dam in southwestern Lancaster County on May 18. Addressing a crowd of 350 invited guests, he cited the dam as "a symbol of the new age of environmental possibilities" and commended the community and the Commonwealth of Pennsylvania for its foresight in developing the fish ladder constructed recently at the dam. It allows shad to proceed up the Susquehanna River to spawn, just as they did for centuries.

His plane, expected to land in a schoolyard in the nearby village of Conestoga, had to be redirected to the Lancaster Airport due to weather conditions at Conestoga. The motorcade traveled Rtes. 30 and 741 bringing the President onto New Danville Pike and eventually through the village of Conestoga.

Conestoga is typical of many Lancaster communities. Homes and businesses hug the country road for a mile or two and seldom extend more than a block wide. That's been the pattern for generations. Two explanations are plausible: 1) it wouldn't occur to the residents to build beyond their backyards, into the fertile fields that surround them and 2) mud, ice and snow made travel on country side roads almost impossible in those early days. And surely, businesses wanted to be "where the action is". Unfortunately, many local towns have succumbed to lure of big real estate dollars and, of course, area snowplows and year-round maintenance of roads have made nearly every corner of the county accessible.

Continued on next page



Standing in front of the general store and post office in the center of town is Martin B. Good. He operated the stage line that ran from Conestoga to Lancaster from 1894 to 1906. The line began in 1882. It also carried the mail (note the "US" on the front of the stage). It continued until bus service took over. The card was sent in an envelope (no stamp or cancellation) to Mrs. Maggie Shank from Minnie H. Good. It's message – "I did not get to see you and the baby, but indeed, Maggie, the intentions are good. John has worked so hard of late and so he laid down to sleep and I didn't say anymore. Look for a familiar face on this card".

To the left, at 3269 Main Street, is the old stone hotel built by J. T. Bruner in 1821. He sold it to local doctor, John Kendig who, at his death, willed it to his daughter, Mary Ann. Her brother, Maris Kendig, and local photographers, Newell and Will Emley, tended bar. It became the residence of H. H. Aston in 1924. *Could the Emley brothers be responsible for these real photo postcards of the village? More research is needed here.* The store and post office were operated by several people - most likely Amos Benedict when this divided back card was made. Today the building is 3267 Main Street, an apartment house with a full second floor.



3223 Main Street, Conestoga, has changed little since this postcard was mailed 92 years ago on June 6, 1909. It was mailed to Schenectady, NY, from Blanche. She was the daughter of Andrew J. Zercher who opened a cabinet making shop and undertaking business in 1878. Blanche took over her father's undertaking business on May 14, 1918. In Oct. 1931, she moved the funeral home to the north side of Main Street, shown here. Oscar Gundel bought the business in 1945 and continues to operate at the same address. White paint and removal of the full front porch and porch roof are the only significant changes to the well-maintained home.

Conestoga, (formerly called Conestoga Center) has, for the most part, remained a village two miles long with no side streets. It was this local charm, dozens of homemade signs and hundreds of American flags that greeted the presidential convoy as it rolled along Main Street that Friday morning, May 18, 2001.

Sensing a story, your editor traveled the same route the following day. Coincidentally, he had received a check for membership in LCPC by the Conestoga Area Historical Society (see New Members) and a visit to the Society's home was included in this impromptu trip.

CAHS is just a few years old. Local historians had contemplated a permanent home. The gift of a tobacco barn, land donated by the village and considerable local elbow grease resulted in a highly recommended history center that offers a wealth of information and exhibits including guided tours by the founder, retired teacher and world traveler, Kenneth Hoak as well as an LCPC member and local resident-historian, Jim Kauffman, among others.

Allow yourself at least an hour for the visit. You'll see a most impressive exhibit of Conestoga Indian culture going back 5,000 yrs., an authentic Conestoga wagon in pristine condition and the Atkinson 18th Century Craft Resource Log House. Here you'll find exemplary work supplied by only local artists and craftsmen and much of it for sale. Hours for the buildings are presently 1 to 4 PM on Saturdays and Sundays with free admission to all and ample parking.

The following Wednesday, I arranged to have Newt Groff, who grew up in the Manor area of the county, return with me to Conestoga. Having a second pair of eyes to spot minute details on old postcards is always beneficial. Together, we offer here, three of the views – with modifications – that Pres. Bush would have seen in Conestoga, PA on May 18, 2001.

A very big Thank You to Newt Groff for going with me on the 11th hour trip as well as loan of a book, *Reflections of a Country Village – Conestoga, 1805-1980*. JW.



When the image on a postcard is large enough to be identified, a postcard detective's job is child's play. Here is an example of a card that can present problems. The "Street Scene" shows a dirt surface on the road, a yard swing in the left-hand yard with iron fencing, white picket fences on nearly all the other yards and barely a view of two homes on the left, under the trees. Where did the photographer stand? Was he (or she) facing east or west? Newt and I soon discovered at least a dozen homes with porches, four porch posts and four windows up and two windows and two doors on the first floor. (A magnifier and some deduction needed here.)

What is most significant, however, are the utility poles lining the right side of the road/street. We discovered poles still line the south side of Main Street and – I'm sticking my neck out on this one – I have found few, if any, old postcard views where poles were removed and placed on the opposite side of the road. If this premise holds, then we found ourselves facing east, eliminating half the homes in Conestoga. I concluded (I won't hold Newt responsible here) that the photographer was standing in front of the old general store/post office (postcard #1 this story) and faced east. There is a red brick home with identical porch and roof pitch on the left! Incidentally, I've been told wooden and iron fences surrounding front yards in the olden days were not so much to keep tots from running unto the street, as they were to keep livestock out of the yards as was customary – driving them to market or a nearby train or truck loading site.



Conestoga, a community of 500 people in 1850, always had at least four churches. The cornerstone for this Bethel Evangelical Church was laid in 1896. Church membership was 60, Sunday School enrollment 71. Offering the first Sunday was 27¢; for the first year \$34.20. In 1937 a Sunday School wing was added, a vestibule in 1952, a basement dug in 1954 and art glass windows in 1968. It was at the southwestern end of the village but has been replaced by a white building on the same site.

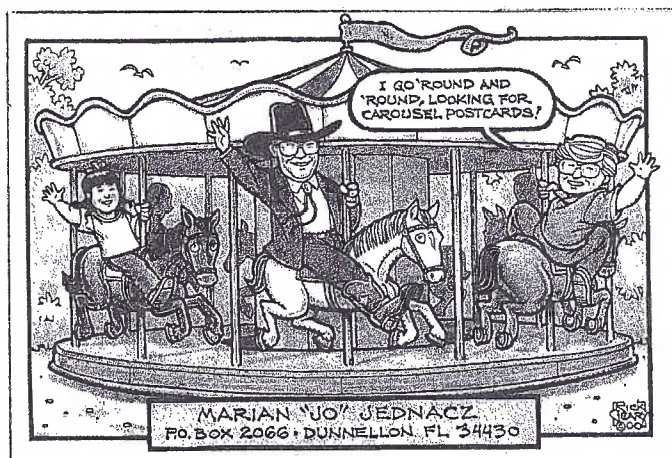
MAY MEETING

It was a full house in May and Free-for All. Nearly 14 tables were covered with thousands of postcards and paper items. Setting up as early as 5 PM with half a table or a full table were Dick Bishop, Earl Carver, Mary Darrenkamp, Ray and Carol Dennis, Gwyn Fulmer, Elizabeth Graver, Maurice and Deanna Miller, Ruth and Harold Moyer, Bill Seigford, Paul and Judy Smoker, Leighton Stover and Jim Ward.

After six weeks of no rain, 63 members and three guests endured the welcomed drizzle, bought, sold and traded until nearly 9 PM with barely 30 minutes interim for a brief meeting and board competition. We were treated to new name badges by the Club Table Committee and congratulate Bill and Mary Ann Guntow, Betty Kreider and the Becks for a perfect choice.

Jere Greider announced all dealer tables are sold for the August Expo. Ruth Frankhouser and Earl Carver listed the four Expo Competitive Board Themes: Working People, Entertainment, Highways and Bi-Ways and Vacations. Jim Ward read a quote from Science Press for a second volume of *Windows to Our Past*. Gisela Withers, Membership Chair, announced 277 paid members to date.

Free postcards by Rick Geary were much appreciated from Florida member Jo Jednacz who sent them to us as gifts. Your editor asked her about her Lancaster connection. This is what she wrote – "I started life in N.J., but graduated from Elizabethtown College, class of 1960. After we got married, Tom finished Drexel, we moved to York where Tom



Riding the carousel with me are seven-year-old granddaughter April and husband, Tom, who became a naturalized Texan when we lived in El Paso for a short time.

worked for York Air Conditioning. Our odyssey then took us to Ithaca, El Paso, Gastonia, NC, three CA cities and now Florida. Through it all, Central PA just seemed like home, where we adopted our two Korean daughters, and where a lot of our friends still live.

I'm sorry I can't get to any of the club meetings. It sounds like such a great, active club. The book you published is certainly fantastic!"

Thanks, Jo, for your generosity and nice compliments. ED. NOTE: We're having a weight problem with The Card and the local post offices and cannot include Jo's PC because of it. Should you like a copy of her card, send an SASE to LCPC (see masthead).

JUNE PICNIC

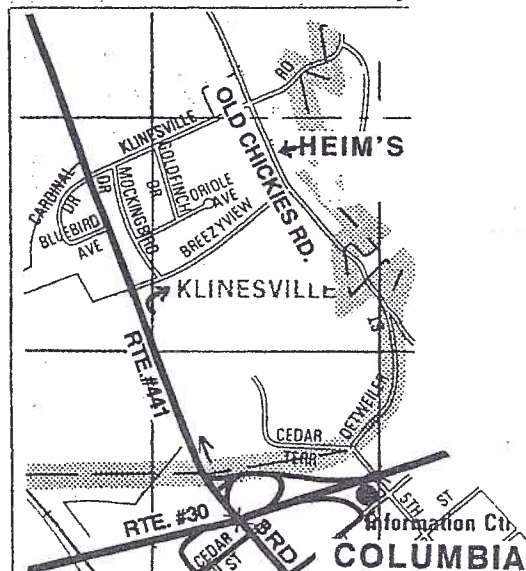
Heims to Host Annual Event – June 16.

LCPC welcomes summer with its annual picnic. This year's gathering will be at the home of Barbara and Charlie "Bud" Heim on Saturday, June 16. Members and guests are welcomed to assemble after 1 PM. at 783 Old Chickies Road. Bud will have indicators on the road to show you where to pull in their drive and park.

Exit Rte. #30 at Columbia and proceed north on Route #741 barely ¼ mile. Turn right onto Breezyview Rd. and follow it to Old Chickies. Turn left and look for the Heim's driveway on the right. (See accompanying map.)

Bring your own lawn chairs and hot (provided in your own crock pot) or cold covered dish. LCPC will provide plates, utensils and beverages. You're encouraged to bring along postcard albums to pass around for viewing or, if you wish, a card table and cards if you wish to sell. We will socialize and have card competition* in the afternoon and begin the meal at 4 PM. Rain date for the event is the following day, Sunday, June 17. The Heim's phone number is 1-717-684-6533. Pres. and V-P Betty and Tom Beck can be reached at 1-717-627-7732.

*competition is Dairy Related (a single card postcard).



Map locates Heim's home n. of Rte. #30, Columbia exit.

Monthly Competition was a bit of a disappointment. Only three entries for what the committee expected to be a very easy subject – Flowers. Let's do better in June, a single Dairy Related card.

Jim Ward **First** Iris-Goddess of the Rainbow*
Harold Moyer **Second** Beauty of Flowers
Earl Carver **Third** Flowery Greetings

*homemade photos with PC backings attached
Door prizes were won by a guest and Tom Beck. Sam Nolt won the 50/50. As is customary, Sam, your winnings will be reported to IRS. You're welcome!

Future Shows

July 7 York, PA York Post Card Club Aldersgate Church, Tyler Run Rd., off S. Queen St. near Exit 6, Rte. #I-83

Aug. 3-4 Havre de Grace, MD Martin summer show

Aug 18 Lancaster County Postcard Club Expo
Farm & Home Center