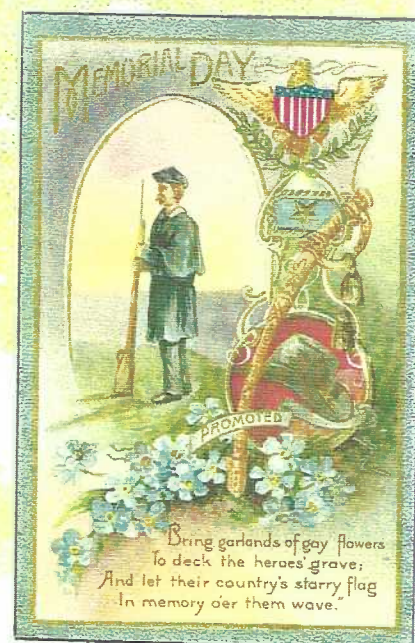
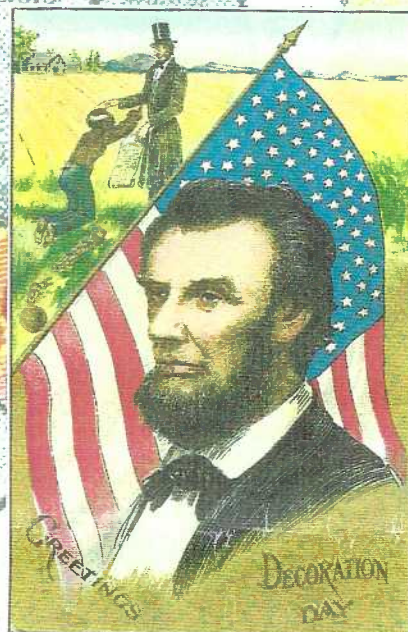


THE CARD Vol. 12, No. 5. Issue 137. *Enjoying postcards through education and entertainment.*

Monthly publication of The Lancaster County Postcard Club, Lancaster, PA.

Next meeting: Mon., May 21, 2001. Farm & Home Center. Buy, sell, trade from 5:30 PM. Meeting at 7 PM.

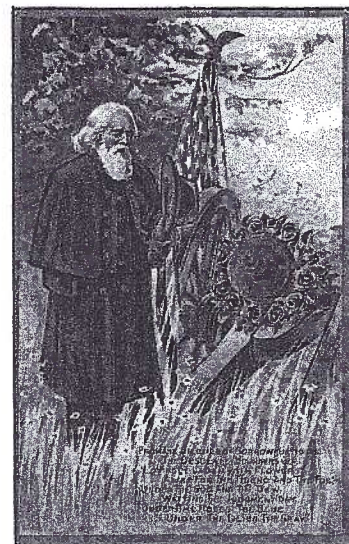
Club and Editor's address: LCPC c/o Jim Ward, 1795 Kleinfeltersville Rd., Stevens, PA 17578-9669 or midcreek@ptd.net.



**Decoration Day?
Memorial Day?**
The story in this
Month's CARD



Card below allowed enough space for message on front even though it had a divided back – a transitional card?



Nash's Decoration Day Series No. 1

Decoration Day – Memorial Day

Have you ever been in one of those positions when you were presented with more information than you wanted to know? You ask someone for the time of day, and they tell you how to build a clock? The Internet can lead you down such paths, and your editor isn't the first nor will he be the last to make this criticism of the 'net.

And there's a second point – remember the quote "If it's in the (NY) Times, it's got to be true." We've long ago learned the fallacy of *that* remark, but even worse is the present-day outlandish comment by some that "If it's on the Internet, it must be true." Yeah, right! With that said, your editor decided to try to find on the net, which came first: Decoration Day or Memorial Day.

"Decoration Day" produced more than 100 sites. "Memorial Day", the name used more often these days, had over 300 sites! Back to my postcards!

I checked the backs of the 60 cards I have and only three were undivided backs (pre March 1907) and none of these used either name. In fact, nearly half mentioned neither Decoration or Memorial Day. On the remaining cards, Decoration Day out-numbered Memorial Day 2 to 1.

Even though General John Logan, national commander of the Grand Army of the Republic (Union forces) officially proclaimed Memorial Day on May 5, 1868, decorating graves of the Civil War dead began before the war had ended. Documentation has women in Columbus, Mississippi, on April 25, 1866, decorating the graves of Confederate soldiers who fell at Shiloh. But up in Boalsburg, PA, on a Sunday in October 1864, a teenage girl, Emma Hunter, was placing flowers on her father's grave. He was a surgeon who had died in service to the Union Army. Nearby, Elizabeth Meyer placed flowers on her son Amos's grave. He had died the year before – on the final day of the Battle of Gettysburg. The ladies then each lay a few of their flowers on the graves of the others' kin.

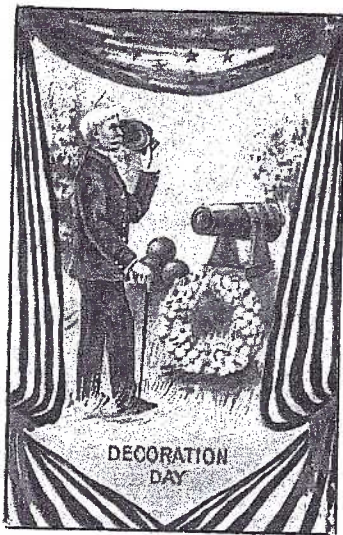
Souvenirs of the Grand Army of the Republic on an undivided back PC mailed from Newark, NJ in 1908.



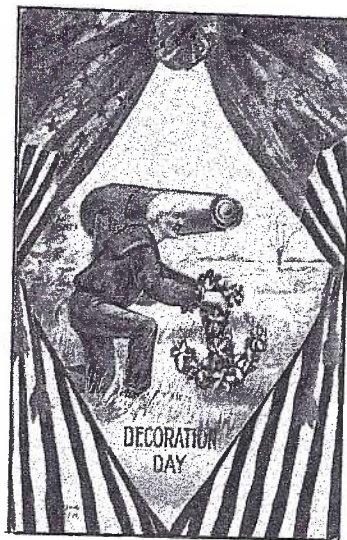
From Tuck's Decoration Day Series #173.

Left – "Cover their graves with laurel and palm."

Right – "Nobly they died in Freedom's name."



Nash set D-4 has flag-borders. Forget-me-nots compose the circular and anchor-shaped wreaths.



Just a few weeks after General Logan's proclamation, the first national observance took place at Arlington National Cemetery, May 30, 1868. Graves of Union and Confederate soldiers were decorated. The South refused to recognize the day and most southern states, even today – after Pres. Lyndon Johnson proclaimed Memorial Day a national holiday in 1966 – memorialize their dead on *that* day as well as special days, varying from state to state. To add to the confusion, Johnson sanctioned Waterloo, NY as the "official" birthplace of Memorial Day. This story, as well as those of 25 other claimant towns across the nation, is an adventure you may take into the Internet.

The singular conclusion I've reached is that the term "Memorial Day" became the name to use once the holiday was declared on a national level and was meant to memorialize those who died for their country in all wars. Those of us old enough to have placed flowers on graves when we walked to the cemeteries from school, will, no doubt, continue to call it Décor-ation Day until corrected by our grandchildren.

Our Cover

Reading clock-wise, starting at 1 o'clock:

Souvenir of Decoration Day Rose blossoms and monument along with a 4-line verse –

"Let them be quiet here

Where birds and blossoms be,
And hail to you who bring the tear
And the rose of memory."

Memorial Day Civil War veterans stands at attention, hat and sword of a fallen comrade and forget-me-nots with another 4-line verse –

"Bring garlands of gay flowers

To deck the heroes' grave;
And let their country's starry flag
In memory o'er them wave."

The two cards above are from the same d/b set. Published by Winsch; printed in Germany; unused.

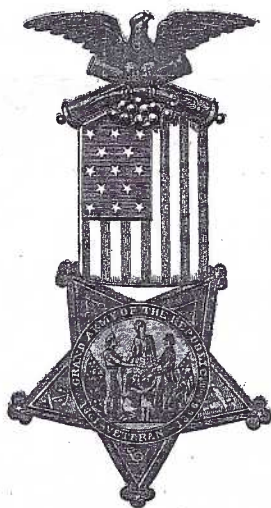
Greetings/Decoration Day features a bust of Abraham Lincoln, President during the Civil War. In the background, on his knees, a Negro thanks Lincoln for his Emancipation Proclamation. Unknown publisher.

Greetings/Memorial Day Miss Columbia attired in sailor-like dress holding flag along a boardwalk? Mailed from Brooklyn to Flatbush, May 31, 1909. Same publisher as above.

Decoration Day – They Gave Their ALL. #2083-3 from the 1908 Lounsbury set of four. A widow stands before a grave in art by Cyrus Bunnell.

Memorial Day – When can their glory fade. Chapman's draped Columbia holds a large bouquet of flowers before a patriotic shield, flags and what appears to be a view of Arlington in the background. International Art is the publisher. Unused.

A postcard, used here as the background to the entire page, is void of any printing. It shows a child, dressed in the uniform of a Union soldier, on his knees, placing a wreath on a grave. Mailed from NY, Sta. F to Ravenswood, IL. On July 17, 1908. Unknown publ.



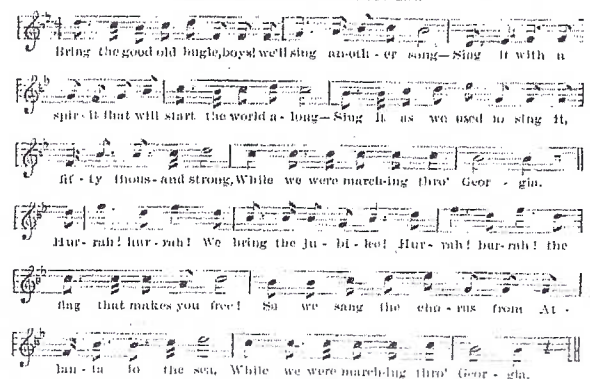
SOUVENIR Mailing Card

Authorized by act of Congress May 19, 1898
Nothing but the Address on this side.



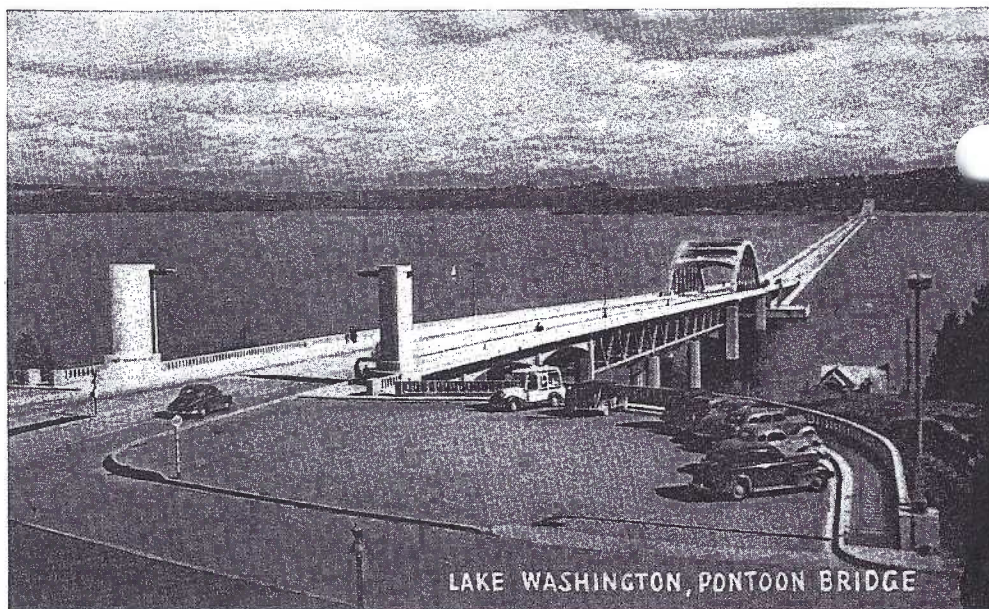
An early Souvenir Mailing Card by an unknown publisher was issued for the 1904 GAR National Encampment. The "front" includes the musical score of "Marching Through Georgia".

...SOUVENIR...
G. A. R. NATIONAL CAMP, AUGUST 15TH TO 23RD, 1904. BOSTON, MASS.
MARCHING THROUGH GEORGIA.

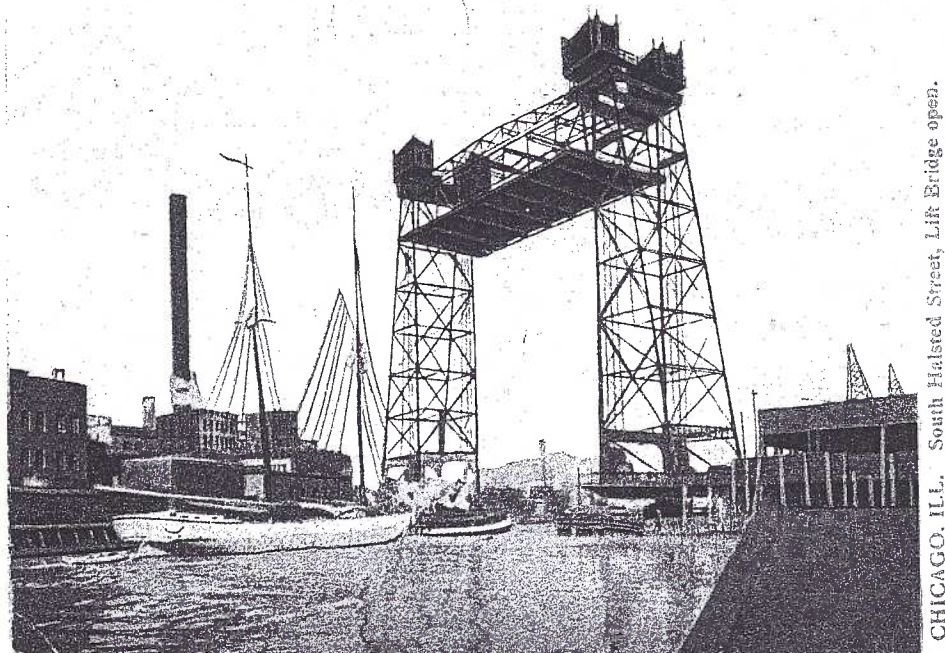


Uncovered Bridges

The b/w Graycraft Card Co. view of the Pontoon Bridge crossing Lake Washington has changed little in the last 60 years. C. B. Blethen, publisher of *The Seattle Times*, was convinced the concrete pontoon design was not only ugly and extravagant but "as outmoded as a stone hatchet." When the toll bridge was completed in 1940 he ate his words. We've seen two chromes, Koppel #5035 and Dexter #43442-B, a night view. No doubt many others exist.



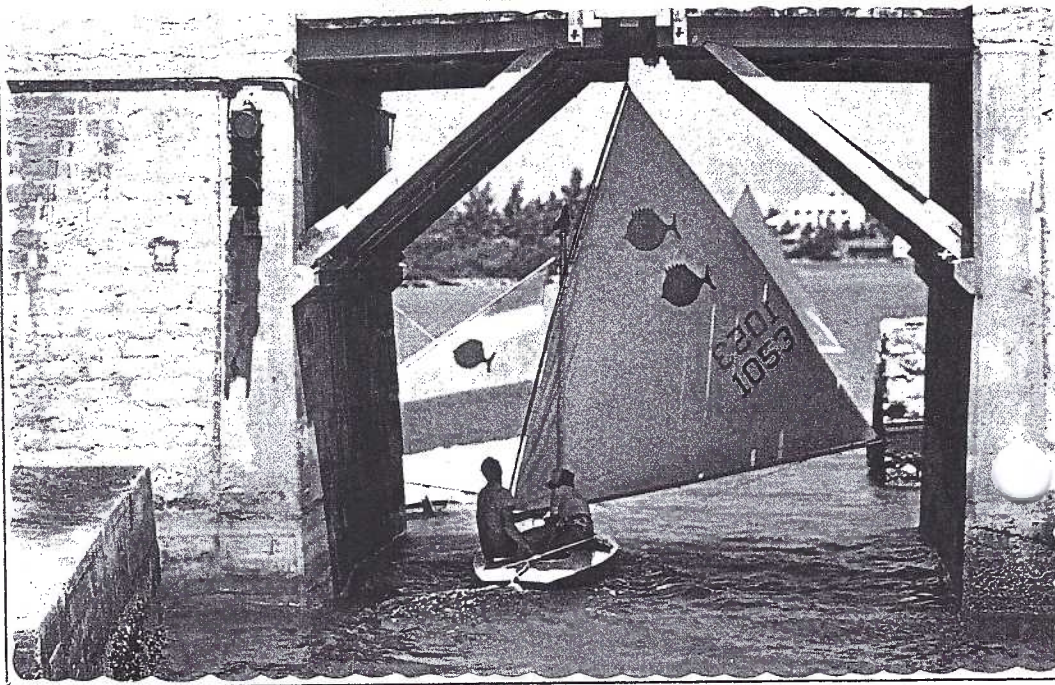
LAKE WASHINGTON, PONTOON BRIDGE



CHICAGO, ILL. South Halsted Street, Lift Bridge open.

Aerial bridges are uncommon in eastern Pennsylvania, but a 5-minute trip into the Internet will reveal this lift-type bridge is easily located throughout the world. Vertical lift bridges use cables, pulleys, motors and counterweights to raise a section of the bridge, much like an elevator. Operating machinery is located above the structure. Their disadvantage is the limited "head space" for vessels passing beneath. This old Photo and Art Postal Co. view shows the South Halsted St. lift bridge in Chicago. An even larger bridge (u/b card) is in Duluth, MI.

The most northern tropical island, Bermuda, is home to the smallest drawbridge in the world. A 6-inch opening allows small sailing craft to pass under the Somerset Bridge. Dexter #80776-B is a great postcard for the superlative (...est) collector.



Covered Bridges

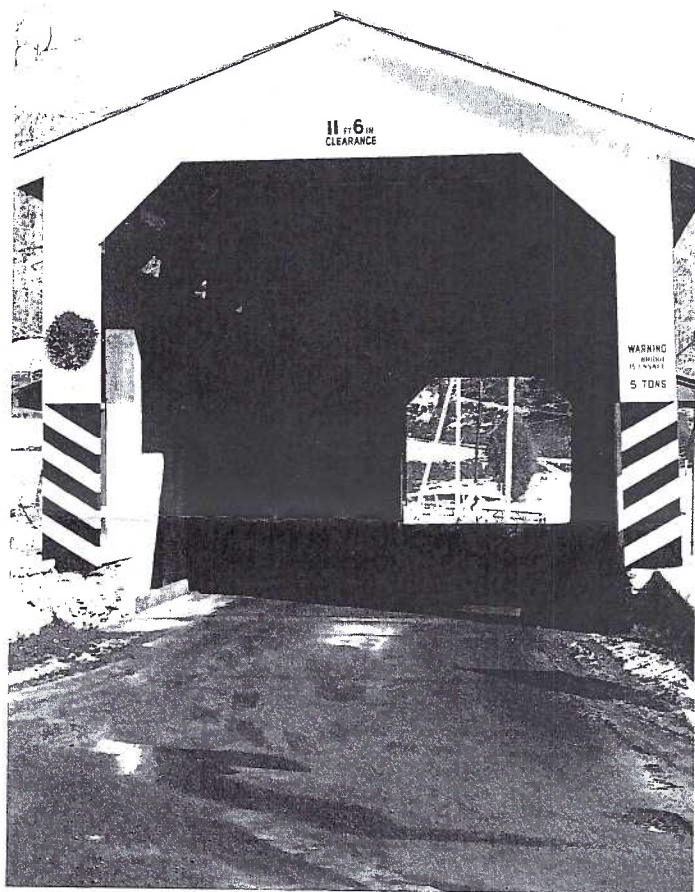
May is National Covered Bridge Month

Snow scenes with covered bridges as their primary subject are not scarce nor are they plentiful. As with landscape paintings, the author is less likely to venture about dodging snow drifts and icy roads than taking to those same byways when trees are in bloom, birds are singing and every neighborhood has emerged from a long, cold winter.

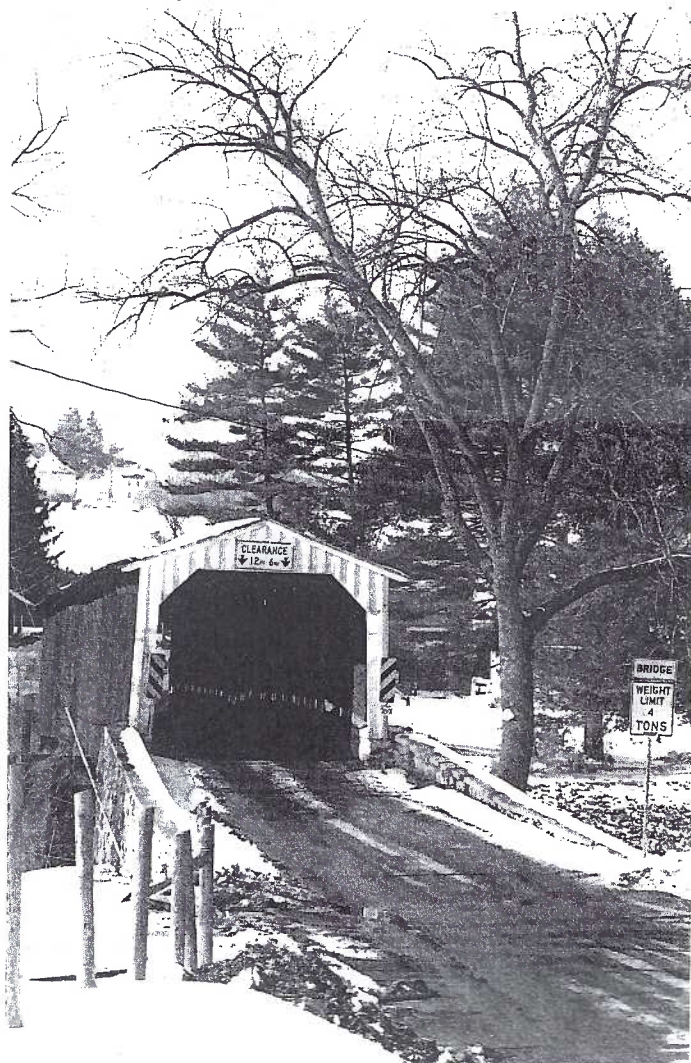
These recently produced postcards (peelable backing was added to photographs) would enhance any covered bridge's collection. The top photo postcard shows **Hunsicker's Mill Bridge** on Mondale Road, just northeast of the village of Eden. It's one of the few in Lancaster County that doesn't follow the pattern of red siding and white portals. Why? Because the bridge was built largely from neighborhood funds and it was the neighbors' desire to keep it natural. This view is looking east. The mill is long gone.

The middle left view shows the **White Rock Forge Bridge** in the southern part of the county. Many would recognize the area if we'd say "next to the Slumbering Groundhog Lodge." Someone was thoughtful and added Christmas wreaths to both of its portals. Weight warning reads "unsafe over 5 tons."

Not too much farther south on the southern Chester-Lancaster County line is the **Pine Grove Bridge** (lower right). Considerably longer than either of the above mentioned, it spans the Octoraro Creek. Our view is standing in Chester County, looking northwest into Lancaster County. Weight limit is 4 tons. The 1904 Octoraro Water Co. building is just 50 yards away.



If you can't hug a bridge this month, take one or two home on film, add peelable backing, and make them part of your local postcard collection.



Homes – Then and Now

...Continuing the saga.

Intercourse residence unveiled with story, postcards and photo by Brian Frankhouser.

Jason K. Eaby was a partner with his father, Moses, at Eaby's store in Intercourse. Jason built this fine 3-story brick home in 1912 directly across the street from their store. He served as postmaster and published many early local view postcards.

Unfortunately, Jason enjoyed his new residence for only a short time. He died in 1913. His widow, Amanda Zook Eaby, lived in their home until 1935.



Conestoga Wagon in front of Jason Eaby's residence. If this postcard (with a 1904-1918 stamp box) were published by Jason Eaby to be sold in his store, the photo would be dated 1912 or 1913.



Photo taken in December 2000 of 3513 Old Philadelphia Pike, Intercourse, Pa.

For the next 40 years the residence served as home and office for the following physicians:
Dr. Lewis Johnson (1935-1946)
Dr. Karl Buri (1946-1953)
Dr. Robert Bauer (1953-1967)
and Dr. John Rutt (1967-1975).

Since then, The People's Place has occupied the house, providing tourists and local residents a place to enjoy the history and life styles of the Anabaptists.

Early real photo postcard of Jason Eaby's residence with open wrap around porch, balcony and widow's walk.



This 'n That**Membership Roster**

Betty Beck is working on the Membership Roster. It will be available on or before our Annual August Expo. A form was included with your April Card. Use it if your data is to be up-dated, including an e-mail address. Deadline for new information is May 31. Send info to B. Beck, 11 Cinder Hill Rd., Lititz, PA 17543.

Recipes

Betty is also willing to compile a recipe book of members' recipes, particularly but not limited to those foods offered at our past picnics and Christmas dinners. Send them to the above address or e-mail them to her at bbeck@ptd.net.

Condolences

We were saddened to read that Helen Philoon, member #190, died following a brief illness. Helen was a faithful attendee when meetings were being held at Faith U.C. Church. She worked at F&M as a psy-chometrist and volunteered as docent at Wheatland and the North Museum. She was the last of her immediate family.

Trains and Christmas on Postcards

Train and postcard buff, Bill Seigford, forwarded a copy of The Train Collectors Quarterly (April 2001). The mag often contains pictures and references to trains on postcards. This issue was no exception. Exaggerations on flatbed cars were included, but a 3-page story with six color photos featured LCPC member Jim Morrison. His article, "Where Did the Toy Trains Come From?" involved the origin of these Christmas toys and included the spectacular Christmas yard layout beneath a gigantic tree at his National Christmas Center.

LCPC had its holiday party there when the Center was in its infancy. Since then 90% of the exhibits have been replaced with unbelievable improvements. Perhaps the club should consider revisiting this year and maybe offer members a Christmas "present" from its nest egg?

Hershey Public Library Treated

Neil Fasnacht presented a slide program featuring his extensive Hershey postcard collection on April 30. Local residents filled the Hershey Public Library to see Neil's excellent display of boards featuring many rare Hershey related postcard views. We were treated to a similar program recently and know these non-collectors must have been delighted with the old images including scarce Hershey bar cards. Spring and summer are Neil's busy seasons working at the shore but your organization might consider him for a program between Labor Day and next April. Contact him at 1-717-533-4048.

Set Up and Selling in April

You can always count on a varied group of member-dealers, new stock and a line of postcard supplies from 5:30 until the meeting commences at 7. Set up and selling in April were Dick Bishop, Jerry Kotek, Mike Middleton, the Moyers, Jim Ward and Paul Weidman.

Expo Exhibit Categories

At the May meeting Ruth Frankhouser and Earl Carver will offer their committee's suggestions for exhibit categories at our annual August Expo. Your additional suggestions will be welcomed and then the club will vote on those categories they'd like to see at the Expo. You can contact Ruth at 354-7611 (New Holland) and Earl at 684-3069 (Columbia) prior to the meeting.

New Member

#593 **Esther Power** 6910 Madisonville Rd., Apt #1, Cincinnati, OH 45227. Ph.1-513-561-4493. General collecting interest.

Note: a number of members have not submitted dues for 2001 and missed their April issue. If they contact you, tell them their check for \$8 before June 30 will guarantee them their back issues.

Future Shows

May 25 - 26 Hagerstown, MD Exit 5 off I-81. Plaza Hotel. John McClintock's show.

June 3 Danville, PA Susquehanna Valley Postcard Club show. Days Inn off I-80.

July 7 York, PA York Postcard Club's 11th Annual show. Aldersgate Church on Tyler Run Rd. near exit 6 off I-83.

Monthly Competition

DST and pleasant Spring weather brought out 71 members and 4 guests in April. We enjoyed Umbrellas on single cards, most of which were of a comic nature. Participating were Bill Guntow, Theresa Jumper, Jere Greider, Walter Mowrer, Bob Kramer, Helen Carver, Harold Moyer, Barabra Mowrer, Susan Glass, Ruth Moyer, Don Jumper and Earl Carver, all of who win **Honorable Mentions** postcards.

Winners were:

Gisela Withers **First** A gentlemen with a lady on each arm, all beneath an umbrella.

Jim Ward **Second** A real photo view of the 4th floor of the Fulmer-Clogg umbrella factory taken 4/27/07.

Don Davis **Third** Horse and wagon and auto comic. Thanks to all. May: a board with Flowers the subject.

Annual Summer Picnic

This year's picnic will be hosted by Barbara and Bud Heim at their home north of Columbia. Mark your calendar for Saturday, June 16 starting at 1 PM. Details and directions in the June Card.

A Second Volume?

Jim Ward put before the membership the possibility of a second volume of 500 local postcard views. There seemed to be a positive but stunned reaction since he and several members who had spent much time on the first book had promised a long hiatus might be necessary before considering another book. Work on Windows to Our Past began in 1996. The limited edition of 2000 hard cover books was available at our 1998 Expo and sold out by January 1999. If you know a local printer who might be considered, let Pres. Betty Beck know. Meanwhile, Jim will contact Science Press of Ephrata to see if they'll once again consider LCPC job.

Winners in April

Door prizes were gifts in April. Norman Zimmerman donated three. Gisela Withers won a Dwig comic from the series of ladies with mirrors. Guests John and Michael Petsche won a Ford auto comic and a booklet set of Bi-centennial PCs respectively. The boys are from Long Island and were visiting their grandparents, Maria and Win Schurz over Easter vacation. They attended our meeting last year, too. We hope they'll make it an annual event. Fulfilling a promise made in the March Card, Jim Ward, offered five photos of spring lambs and ewes converted from photos to postcards with peelable PC backings. Winners were Bill Guntow, Ruth Bair, Don Davis, Mark Arbogast and Ruth Lines.

Clarence Swinehart won \$24 in the 50/50. Thanks to the donors and congrats to the winners.

Mary Darrenkamp and Bryan Benner have filled in the missing pieces to our Lancaster Square list (Mar. Card). This data as well as lists for Park City and the Lancaster City Historic District will appear in the June Card.

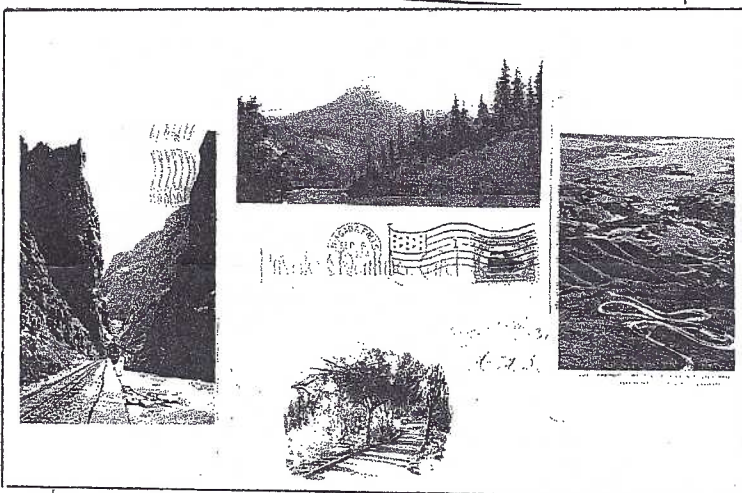
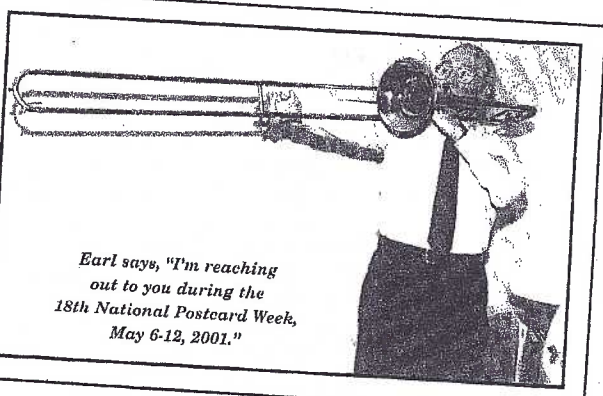
"...for Better or Worse"
With a complete kneec replacement just two weeks before, Pres. Beck still carried out her duties in April, sharing the podium with VP and hubby Tom. Thanks!!

Our Club's and LCPC Members' NPW Entries

300 of the club's cards (right) have been included free with this May mailing. 200 more are available for 25¢ plus SASE to members and the public. A block of 500 was ordered by the Christiana Historical Society. Unless stated, each entry below is available for exchange of your legitimate 2001 NPW postcard or check further data in Barr's Postcard News.

Left column

Slush-pumper **Rev. Earl C. Carver's** entry, another view of his avocation, this year in a horizontal mode. He lives at 212 Pheasant Dr., Columbia, PA 17512.



Cordially

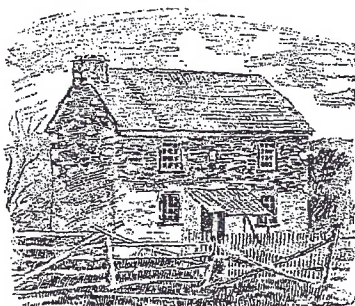
Ann Rusnak

N.P.C.W.

2001

Presage of the Civil War

The Lancaster County Postcard Club recognizes the 150th anniversary of a terrible riot that occurred in eastern Lancaster County, Pennsylvania



Christiana Riot House

NPW

May 6 - 12, 2001

Anne P. Valsing commemorates the 100th anniversary of the change from Private Mailing to Post Card backs. She says "Any one identifying the five locations when they request my card, will get a second card free. She will swap 1 card per person or sell for \$2 to those with no NPW card. Contact her at P.O.Box 223 Camp Hill, PA 17011-0223.

Stan Hopkins, 10 Kristen Hts., Parry Sound, Ontario, Canada, P2A 2Z6 honors Ann Hopkins, author of the NPW checklist for 10 years beginning in 1984.

Right column

Bette Mays contracted with popular NPW artist, Rick Geary, to portray hers and Elmo's cats, O'Bear and Missey, as well as neighbors' feline pets. Her card includes O'Bear's Banana Foster recipe. Contact Bette at 8636 SE Longview Dr., Hobe Sound, FL 33455.

A new Century and New Millennium - 2001 is featured on **Jim Ward's** 11th NPW card. Address on *The Card* masthead. **Bert Cohen**, 169 Marlborough St., Boston, MA 02116 annually admits he still hasn't all his marbles. He also engaged Rick Geary for the dramatic color art.

