

# The Card

Volume 10,#4,Whole Number #112

MONTHLY PUBLICATION OF  
THE LANCASTER COUNTY POSTCARD CLUB  
LANCASTER, PENNSYLVANIA

Meets 3rd Monday, Farm & Home Center, Rtes. #30 and #72, Lancaster, Pa.

**NEXT MEETING: April 19, 1999 at 7:00 PM, trading from 5:30**

Yearly membership is \$8 (\$2 extra for each member at same address). Membership year is April 1 to March 31. Make checks payable to: LCPC c/o Dorathy Fry, 1050 Kleinfeltersville Rd., Stevens, PA, 17578. Advertisements are \$15 full page, \$8 1/2 pg., \$5 1/4 pg. prepaid with copy. Ads of 25 words or less are FREE to members but please submit your ad for each issue 30 days in advance. Send all correspondence and change of address to Jim Ward, editor, 1795 Kleinfeltersville Rd., Stevens, PA, 17578, phone 717-721-9273. THE CARD staff includes Dorathy Fry, proof reader and Gerald Hostetter. Harold and Ruth Moyer are the mailing committee. Recent circulation included 13 postcard clubs, 4 postcard publishers and 225 homes with nearly 300 members.

## APRIL PROGRAM

"The largest artificially produced waterfall used for the development of electric light and power east of the Mississippi" was H. Justin Roddy's description of the building of the Holtwood Dam at what was then known as McCalls Ferry. When it was completed on Oct. 23, 1910, it

was the largest dam in America.

A series of printed PCs by the Conestoga Publishing Co. of Lancaster (#47 to #61) are highly prized for their authenticity. The construction took place during the golden age of postcards. More than 50 other printed cards and as many real photo views record the construction.

Bud Heim, member #78, will present a slide program of these views at our April meeting. A native of Columbia, Bud has lived along the Susquehanna River his entire life and has studied its history as well. This will be a fine program. Plan to attend.

The steam shovel shown on this RP card was one of many operated by H.S. Kerbaugh of Phila. The firm did extensive railroad construction along the Susquehanna. A body of water created by the building of the RR upstream was known as Kerbaugh Lake until it was back filled. Some views of Chickies Rock show this little lake. This card was mailed from McCalls Ferry Feb. 8, 1907 to the writer's aunt at Chickies, Pa.

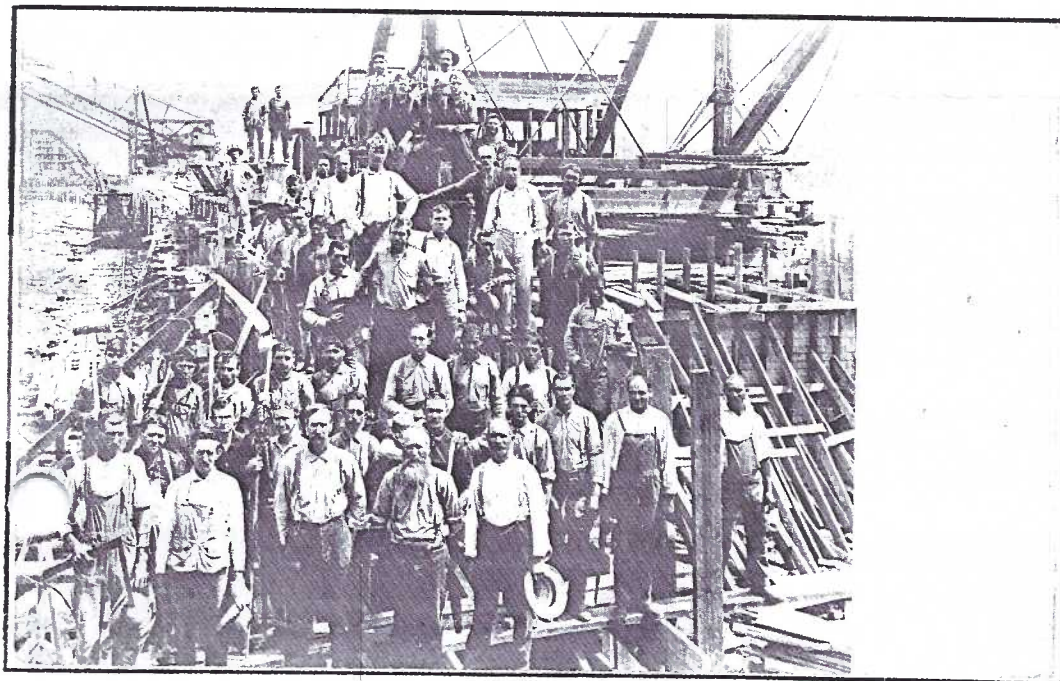
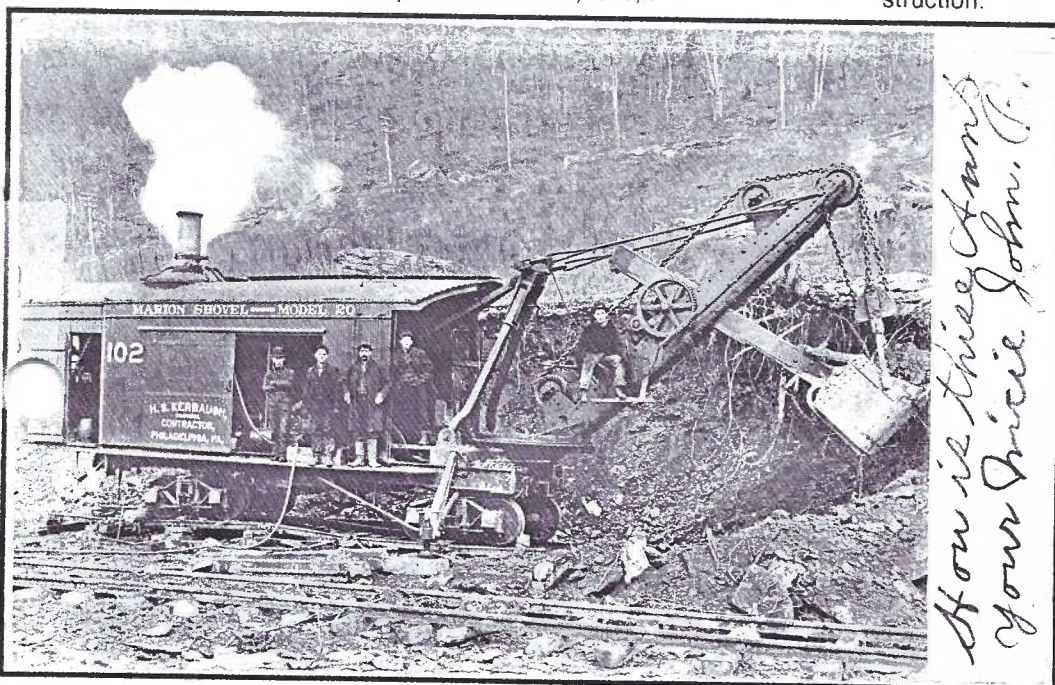
The second real photo postcard is described on the back - "rigging gang at McCalls Ferry Dam now Holtwood, 1906".

The area was known as McCalls Ferry even before the first covered bridge crossing the river was built there in 1815 by Theodore Burr. The Holtwood name came into use during the construction of the dam and became official when the post office name was changed on May 13, 1911. Area residents continued referring to it as McCalls for another generation.

## Early Auto Rides

In this issue THE OTHER SIDE has found more than a dozen messages describing early automobile rides in and around Lancaster. Most of them occurred when autos, especially the Model T, had become cheap enough for Mr. Everyman to own and enjoy on a Sunday drive.

See pages 6 and 7.



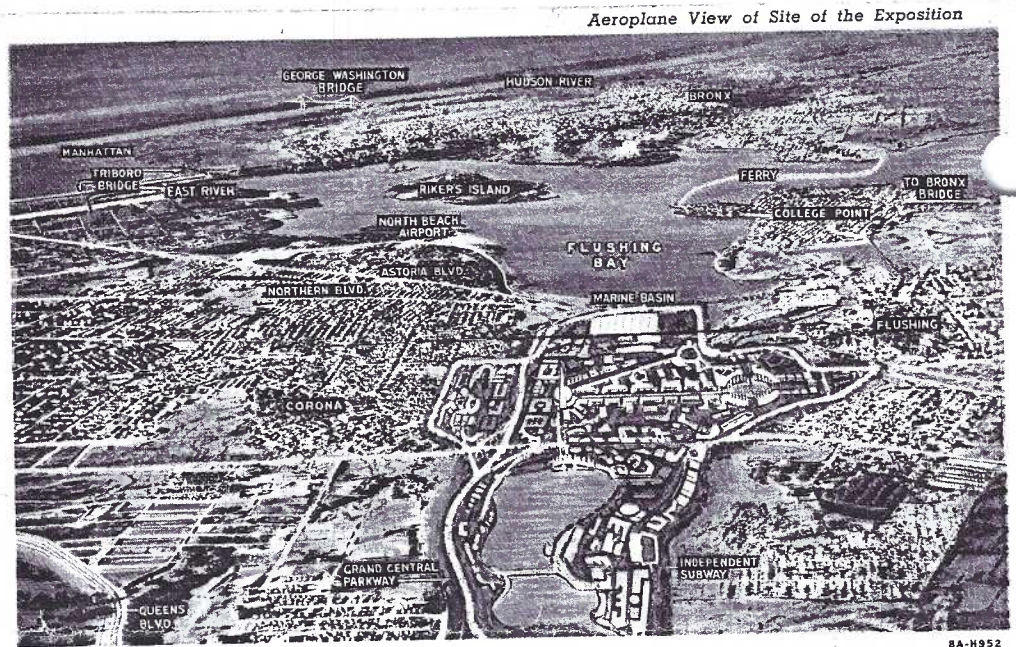


## NUTTY ABOUT MAPS

Curt Teich of Chicago was one of our country's leading producers of PCs during the Linen Era. It's little wonder, then, that both of these map cards related to the New York World's Fair of 1939 would be from C.T.

#8A-H952 was published by Interborough News Co. It shows an Aero-plane View of Site of the Exposition. "Officially Approved" is clearly stated on the reverse. "The exhibit section occupies all of the area between the Long Island Railroad and the Horace Harding Blvd." The Geo. Washington and Triborough bridges are purposely included in the aerial map to aid visitors.

The Croydon Hotel's Curt Teich card, #8A-H3145, mentions its \$5 single and \$6 double room rates in the reverse caption. An additional typed message suggests "Motorists to the New York World's Fair need



New York World's Fair 1939

8A-H952

not hesitate about driving their car into the city. Traffic lanes are easy to follow to THE CROYDON. World's Fair grounds only twenty minutes away via express boulevards."

"Send for route map marked from your home to our door."

Both fair cards were mailed in the summer of 1939 to different homes in Pittsburgh.

## MONTHLY EXHIBITS

After another nearly snowless winter we were hit with a zinger the day before our March meeting. Plenty of sun, dry roads and stalwart hearts accounted for 51 members present to see the Wearing of the Green on March 16. (Your editor and his proof-reader apologize for the incorrect meeting date in the Mar. **CARD**, but keep in mind, *we always meet the third Monday of every month except for picnic and possibly the Christmas meeting*).

<b>HAROLD MOYER</b>	<b>FIRST</b>	St. Patrick's Day
<b>DON DAVIS</b>	<b>SECOND</b>	Bring Me Your Pipe
<b>JIM WARD</b>	<b>THIRD</b>	Irish Beauties

### HONORABLE MENTIONS

<b>EARL CARVER</b>	In Honor of a Saint
<b>JACOB FISHER*</b>	Irish Goats

\*Thank you, Jacob, for your first entry to our monthly board competition. (He is a recent member and one of the County's leading goat breeders, now retired.)

April's theme must begin with the letter "C". Here's an opportunity for many, many great postcard subjects and lots of member participation...and practice for our Expo Exhibits in August! ...comics, children, cats, castles, ciphers, circus, coal, clocks, costumes, chimney sweeps, coins, colleges, cameras, Canada, China...WOW!

## LUCKY MEMBERS

The 50/50 was won by **Bill Kohler**. **Barb Heim**, **Ruth Frankhouser** and **Charlie Moore** won door prizes at the March meeting. Congratulations!

## FUTURE PROGRAMS

A great line-up of events for the next few months-

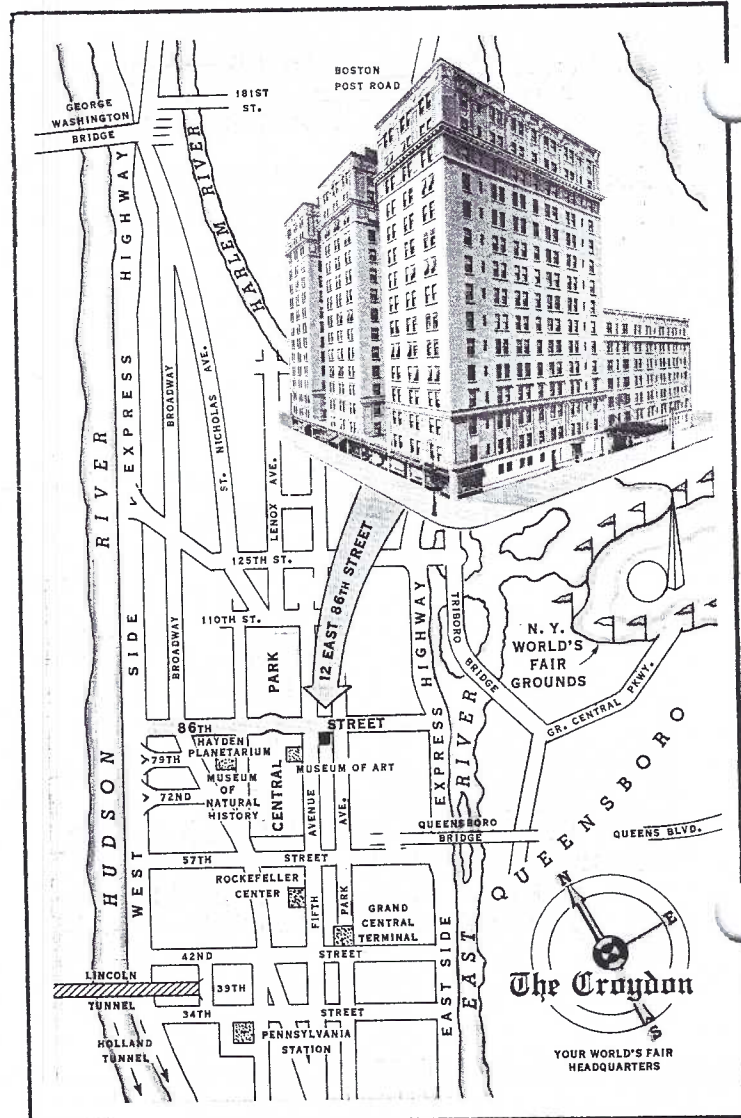
**April** - Bud Heim on Holtwood, Lancaster County

**May** - Howard Steinberg on Rocky Springs Park

**June** - Annual Club Picnic

**July** - Free for All (FREE table space for everyone)

**August** - 5-Minute Talks "What I Collect on Postcards"







THE NATION'S MARKET PLACE

# 10,000

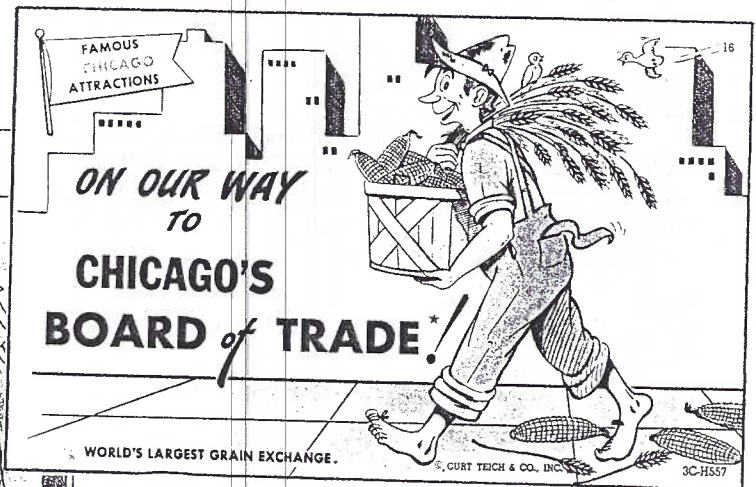
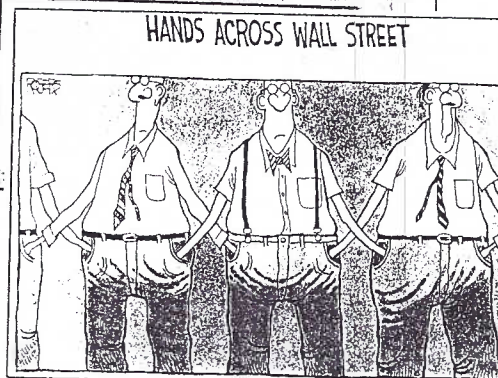
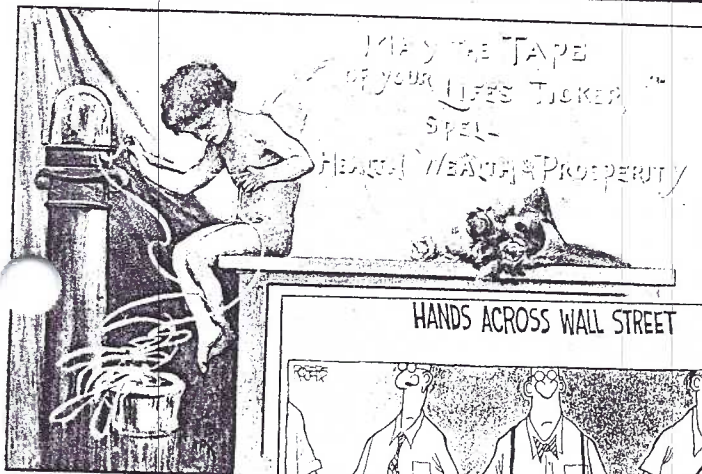
## Worth a few Postcards

Don't have any stock - might be too late to get any. Have my money in postcards. Can't begrudge those of you who *do* have stock, so we'll celebrate the big round number and wish you all well.

Black and white chrome of *The Nation's Market Place* is canceled Oct. 23, 1952, NYC and sent to G.G. Lewis, Kings College, Del. "Visited this place today - no buying." (undecipherable initials). Hours on the rev. were then 10 AM to 3 PM, Mon. thru Fri. Free (admission). A later colored chrome has similar reverse.

*May the Tape of your Life's Ticker Spell Health, Wealth & Prosperity* by Langsdorf. PM Lebanon, Pa., 8/9/07.

*On Our Way to Chicago's Board of Trade*, 1953 issue by Curt Teich & Co  
*Hands across Wall Street* by Maine Line Co., 1988. Art by Radically Rob Rogers.



## NEW MEMBERS

**BETTY KREIDER #526** 212 Front St., Lititz, PA., 17543. General interest and especially Lititz views. Betty is the mother of members Betty and Tom Beck.

**ARLENE DAVIS #527** 880 Harbor Rd., Millsboro, DE., 19966. Ph. 302-945-9201. Likes buildings, towns, scenery.

**WALT TYMON #528** 39 Glenwood Ave., Lancaster, PA., Ph. 393-3372. General interest.

## FUTURE SHOWS

**APRIL 9, 10 Havre de Grace, MD.**, Chesapeake PC Show, Community Ctr., 10 to 6, 10 to 4, \$3 admission.

**APRIL 30, MAY 1 Mt. Laurel, NJ.**, South Jersey PC Club's 28th Show, 10 to 6, 10 to 4. \$2 admission.

**MAY 8, Slate Hill, NY.** Half Moon PC Club's 20th Annual Postcard Show and Bourse, Minisink High Sch., Rte. #6, 40+ Dealers, 9 to 4. \$2 admission.

**MAY 21, 22. Hagerstown, MD.**, Postcard Society, Inc. Show. Howard Johnson Hotel, 10 to 6, 10 to 3.

## Information Wanted

### Items sought from Woolworth Sale

Jim Morrison is looking for the buyer or information that will lead him to the buyer of items from the Woolworth store sale of last year. In particular, Jim is interested in the murals that hung on the store's walls and invoices of old purchases made by Woolworth when they were in business. They can be helpful in Jim's constantly changing exhibits at the National Christmas Center. Contact him at the NCC 442-7950 or at his stand at Renninger's on Sundays.

## NPW CARD THEME

The 100th Anniversary of Elizabethtown College will by LCPC's theme on our 1999 NPW postcard as voted by the membership in March.

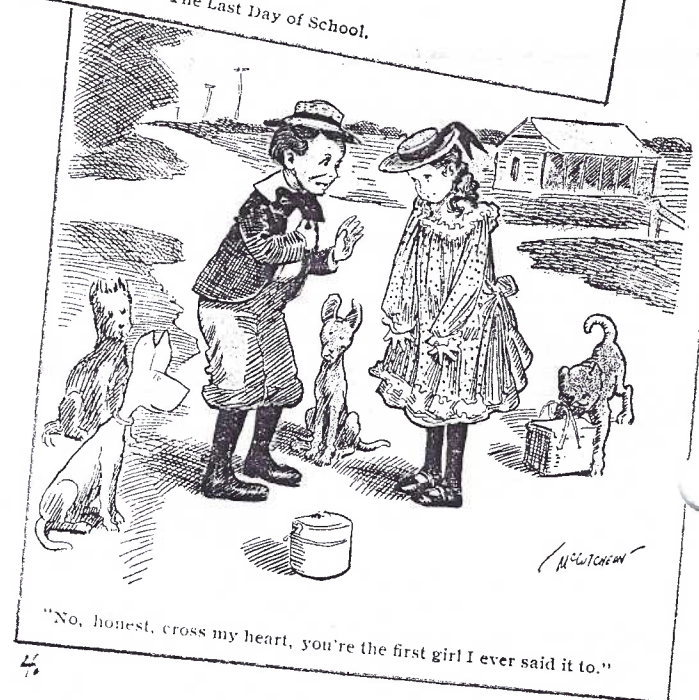
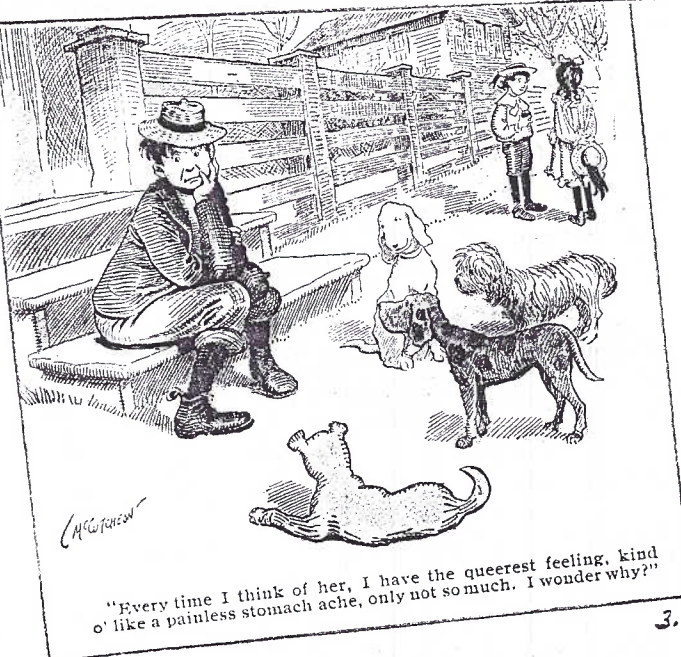
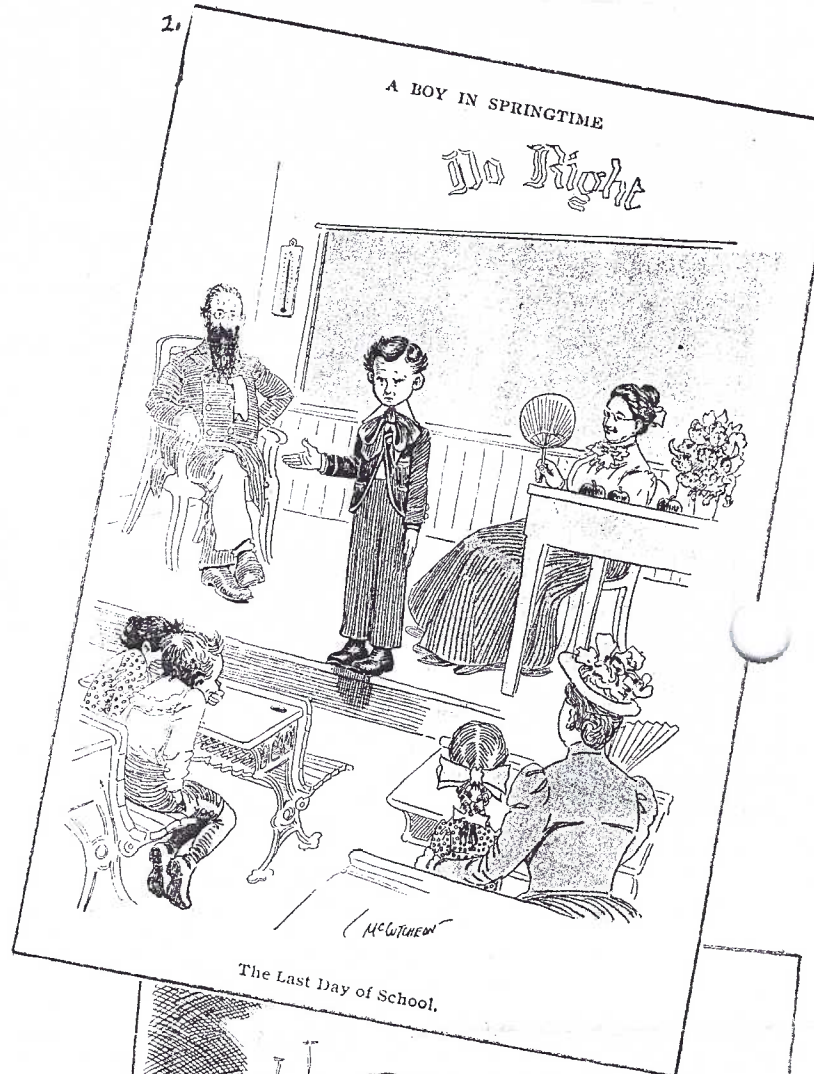


## A Boy in Springtime by John T. McCutcheon

Many of us remember The Toonerville Folk (Fontaine Fox), Gasoline Alley (Frank King), Mr. and Mrs. (Claire Briggs) and Terry and the Pirates (Milt Caniff). All of these newspaper cartoonists credit the political cartoonist **John T. McCutcheon** for their success and chances are, you *don't* know him! On the other hand, if you've seen PCs in his seasonal series about a country

boy, then you're fortunate to have found a treasure of our rural past. Although his political cartoons appeared for years, JTM's comic cartoons ran for only a short while and a series of 32 subjects is all we've seen on PCs.

McCutcheon's boy has no special name. He's not Tom Sawyer or Huck Finn, but he well could be. America had



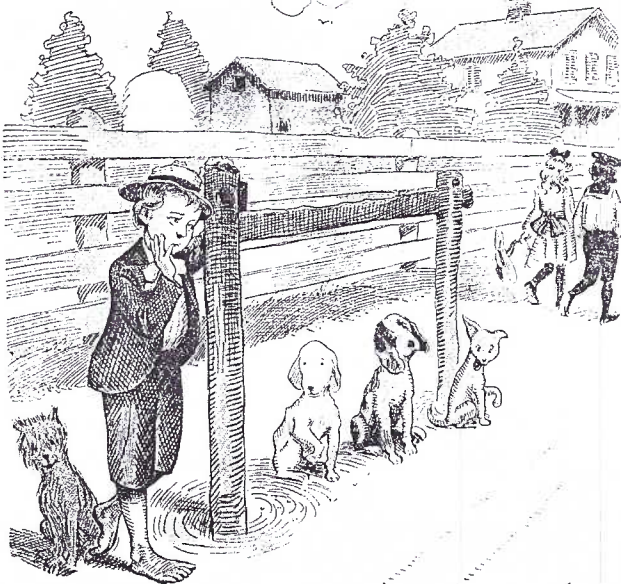


found city and suburban kids in cartoons - Buster Brown, The Yellow Kid and Reg'lar Fellers. After the sturdy writing of Twain, the magnificent earth-stained English of Whitman and the powerful vision of Winslow Homer, the readers were ready of a healthy American country kid and McCutcheon provided him - on the front pages of the 1903 Chicago Tribune.

Enjoy our presentation of the eight scenes in the Springtime series. Each season we'll show you another eight cards. (Most postcard lengths have been reduced to accommodate the limited space on these two pages.) **Your editor wishes to purchase cards #17,27 and 28 in the series in order to complete the year's presentation.**

5.

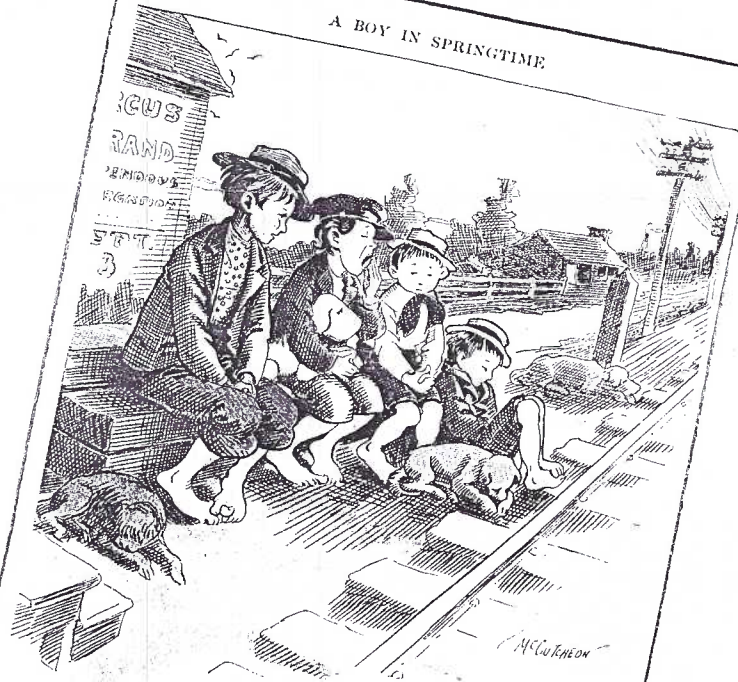
A BOY IN SPRINGTIME



"Some day she'll be sorry she treated me this way. I'll go 'way and make lots o' money and come back here riding in a carriage with four white horses, and when she tries to ketch my eye I'll pertend I never seen her before."

6.

A BOY IN SPRINGTIME



"Gee! I wisht the circus'd hurry up and come. I'm terrible hungry. We've been waiting nearly three hours and it'll be sure to come if we go home for breakfast."

8.

"Dog gone it! This kind o' life ain't the kind o' life for me. I'm gunna run away 'nd be a soldier, 'nd get killed, 'nd then you bet ma' I'll be sorry she treated me this way."

7.



"You bet this is the last time I'm gunna visit Aunt Mary, not even if she invites me."



## THE OTHER SIDE

### EARLY AUTO RIDES

June 5, 1912

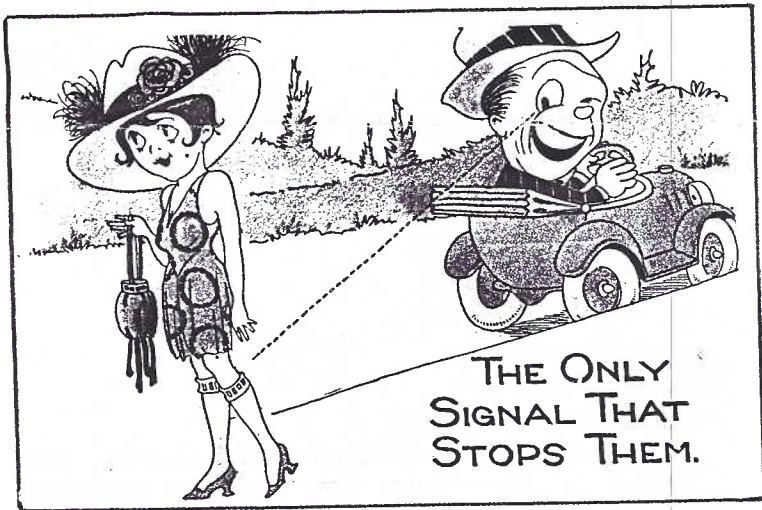
Lancaster to Minneapolis, Minn.

...How is the auto business? It seems very brisk in here...

Sept. 22, 1910

McCalls Ferry to Mount Nebo

...I said we would be up on Sunday but I guess we will not. We are getting company. We are getting automobile visitors so I guess we will get an auto ride on Sunday.



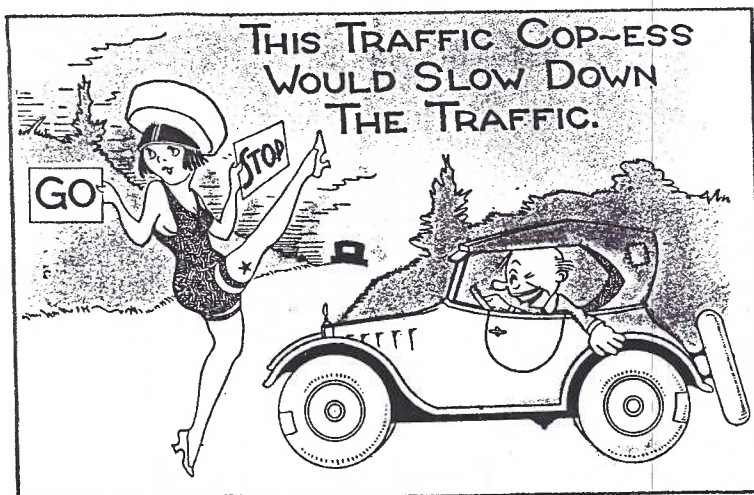
No postmark

You had asked us to come up. We will be up before long but not in the trolley. I most always get sick when I ride in them. We will be up in the automobile, but I will let you know later when. Eliz. Shreiner

Sept. 6, 1906

Lancaster to Lancaster

How were you and your mother on your automobile ride? I went out Manor St. on Sunday then I could see the field we were in. Don't think you will forget that ride so quick.



Does Motoring make the Mouth Too Hard for Kissing?



She believes that it does not.

Aug. 22, 1916

Lancaster to Spring Grove, Pa.

We are spending our vacation at Lanc. We are having many nice trips through this lovely country in our auto. Next time you pass through Gettysburg, don't pass us by.

Aug. 24, 1910

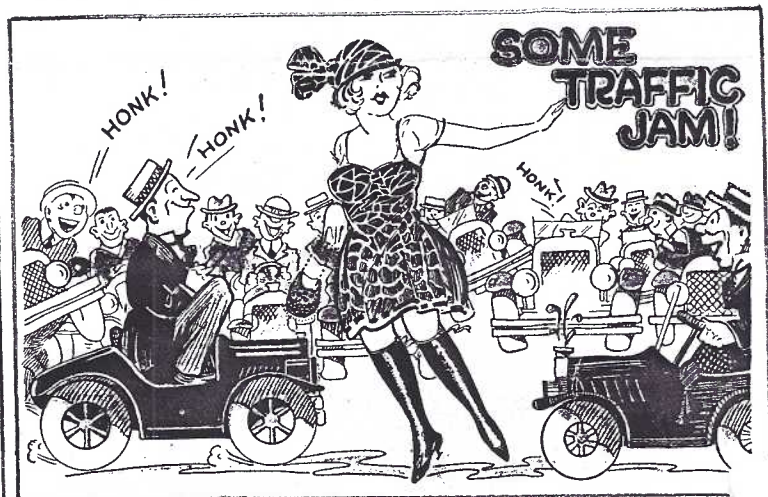
Lancaster to Wayneboro, Pa.

We are having a nice time here. The city and parks are beautiful. We are going automobiling this afternoon and to Lititz tomorrow. Don't let our house run away till we get back.

Aug. 3, 1906

Lancaster to Osceola Mills, Pa.

Expect to go on a 25 mile auto trip tomorrow.



May 31, 1910

Lancaster to Harrisburg, Pa.

Will not be home before Saturday noon. Between auto rides and dinner parties I am kept pretty busy...





Jul. 8,1905

Lancaster to Bridgeport,Pa.

All over this city in a big Rambler. Paid toll all along the country roads.

Sep.9,1908

Phila. to Washington,D.C.

...Look out for auto accidents, so numerous around...

Mar.13,1923

Columbia to Detroit,Mich.

Suppose that by this time you can build an auto backwards with your eyes shut.

May 2,1912

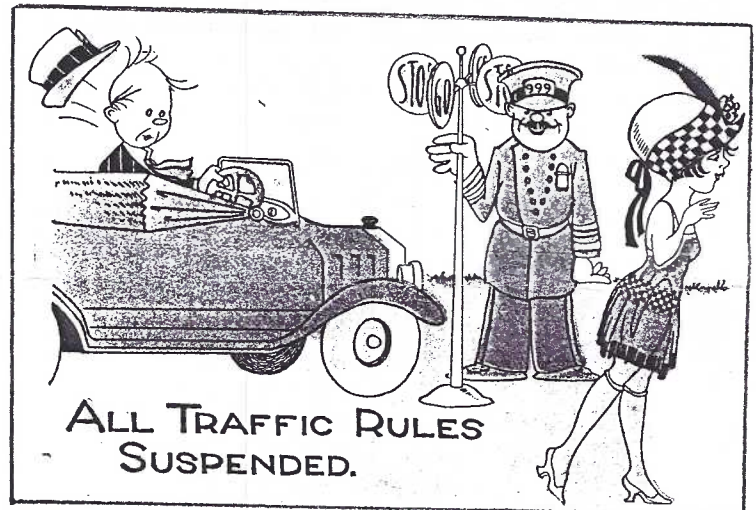
Lancaster to Bradford,Pa.

I am feeling fine again.I went over this bridge (Witmer Bridge) in an auto - oldest bridge in Penna. Been sightseeing all day.

Jun.21,1911

Lancaster to Danville,Pa.

We are here enjoying the Auto and horse show. We came here with Mr. Emenick's bro. in an Auto run.



Aug.25,1910

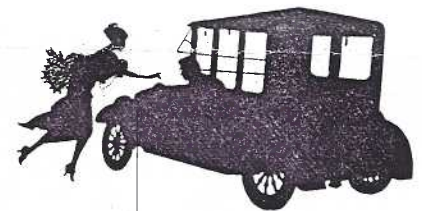
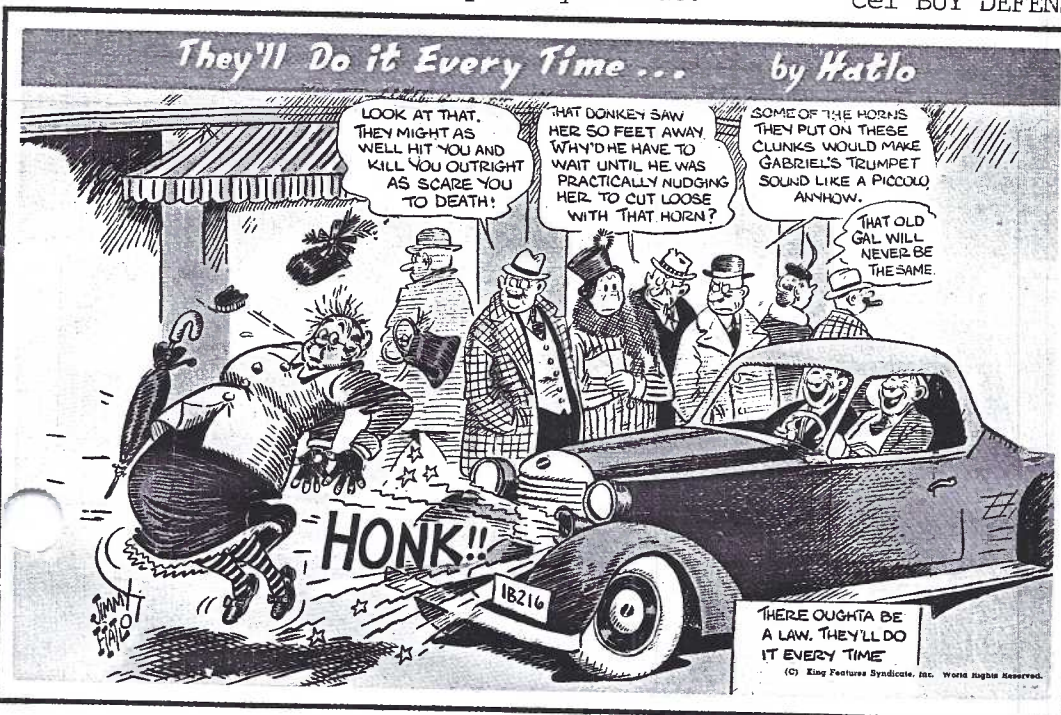
Parkesburg to Phila.

Had a fine trip in the machine (auto) yesterday to Lancaster. Nothing more exciting than a tire blew out. The roads are very poor up this way.

May 26,1942

Lancaster to Strasburg,Pa.

...We will be down next week. This gas business is awful (rationing). (Slogan cancel "BUY DEFENSE SAVINGS BONDS AND STAMPS".)



## about the postcards

This and preceding page. The two toothy autoists are by Millar & Lang, Ltd., Art Publishers at Glasgow and London. Both were posted in 1908.

Four (of six) Traffic Comics in Series #618 are by the Metropolitan PC Co. Finally, from Tichnor Bros., a linen in the Jimmy Hatlo Series of 25 designs. Some of us remember Hatlo's They'll Do It Every Time from the Sunday newspapers of the 1940's.



April 1999,pg.8

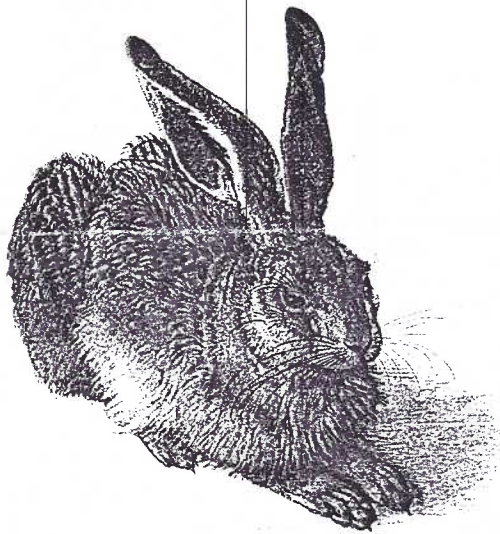
### Did You Know?

APRIL is National Humor Month

APRIL 1-7 is National Birth Parents Week

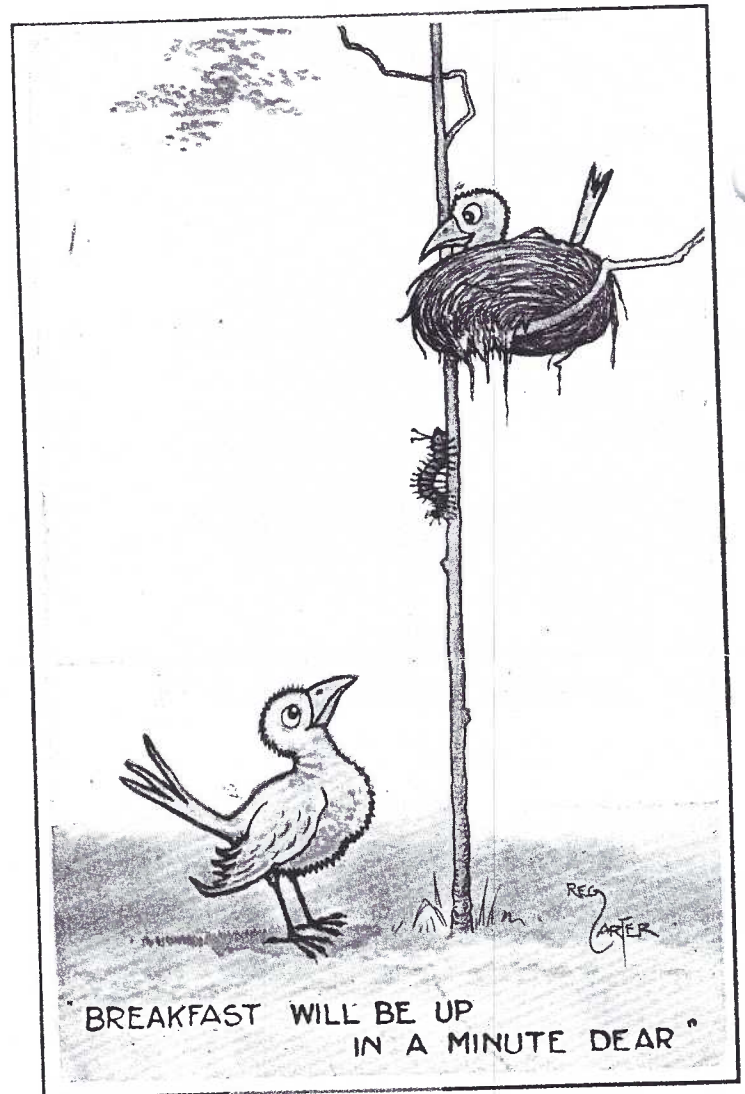
APRIL 1 is April Fool's Day

and so we offer this pictorial postcard tribute, J. Salmon's #592 by British artist, Reg Carter (1886-1960). Carter did PC work for more than a dozen firms before WWI (he was an aircraft gunner) and long after, with a decided tendency towards humor. →



### **Year of the Rabbit**

This grand artwork by Albrecht Dürer is our way of reminding you (albeit a bit late) that Feb. 16 marked the beginning of the Chinese New Year and the Year of the Rabbit. It represents a peaceful time, a year for conciliatory measures and agreeable diplomacy. The continental chrome PC (reduced here) is #3103 by F.A. Ackermanns of Munich, Germany, c. 1960's.



Miss Elizabeth Landis, RR#7 Lancaster received this card from Etta on Oct. 6, 1906. It was of an outing Etta made that summer. "My dear Elizabeth - Here we are on the lumber pile at McCall's Ferry, July 28 for a little rest. Hope to see you this P.M."

A similar view to Miss Mary Landis of Lancaster RR#7 reads "Dear Mary - We had a lovely time at McCall's Ferry July 28. Expect to see you this P.M. lovingly, Anna N. Ranck".

Prolonged construction of the Holtwood Dam offered locals a chance to drive to the River to see how much progress had been made and then hike or have a picnic BTW and BI (before television and before the internet kept people indoors).

Don't forget Bud's program in April.

