

The Card

Volume 10,#3, Whole Number #111
MARCH 1999

MONTHLY PUBLICATION OF
THE LANCASTER COUNTY POSTCARD CLUB
LANCASTER, PENNSYLVANIA

Meets 3rd Monday, Farm & Home Center, Rtes. #30 and #72, Lancaster, Pa.
NEXT MEETING: March 19, 1999 at 7:00 pm, Trading from 5:30

Yearly membership is \$8 (\$2 extra for each member at same address). Membership year is April 1 to March 31. Make checks payable to: LCPC c/o Dorothy Fry, 1050 Kleinfeltersville Rd., Stevens, PA, 17578. Advertisements are \$15 full page, \$8 1/2 pg., \$5 1/4 pg. prepaid with copy. Ads of 25 words or less are FREE to members but please submit your ad for each issue 30 days in advance. Send all correspondence and change of address to Jim Ward, editor, 1795 Kleinfeltersville Rd., Stevens, PA, 17578, phone 717-721-9273. THE CARD staff includes Dorothy Fry, proof reader and Gerald Hostetter. Harold and Ruth Moyer are the mailing committee. Recent circulation included 13 postcard clubs, 4 postcard publishers and 225 homes with nearly 300 members.

February Meeting...was great!

The weather was a fine February 50's. By 6 PM seven members filled the back of the room with their wares: Norman Zimmerman, Jim Ward, Howard Steinberg, Ruth Moyer, Bob Kramer, Gerald Hostetter and Dick Bishop. Sally Danz and Bill Guntow shared their jobs at the Club Table with Librarian Valerie Refi who toted two dozen books for lending. Membership Chairman Dot Fry was there accepting 1999-2000 dues along with Roster Forms from those who have changes since the last time.

President Susan Glass conducted another good meeting for the 65 members and guests present. The 50/50 was won by Ruth Lines. Her husband Harry, Wanda Graham and Walter Mowrer won the door prizes - reference books about artists Lance Thackeray and Tom Browne and James Lowe's Lincoln Postcard Catalog.

Book Sales Chairman Ray Dennis reported sales are steady. *Fewer than 500 of the 2,000 remain.*

The icing on the cake, or rather the Fasnacht on Fasnacht Eve, was the excellent program of Hershey, PA. cards by member Neil Fasnacht. We were honored to see undoubtedly the finest collection of that town's cards ever assembled. Using two slide projectors and non-stop description, Neil offered us - not a taste of Hershey - but a bountiful meal of 300 of the very best of the company and town that gave chocolate bars their generic name.

Unfortunately time didn't allow for Q and A, but we asked him as he packed away the wonderful displays he had brought along, "Of the 300 cards we saw, how many have been seen in quantities of ten or more?" "Probably fewer than 40 cards, mostly the linens and white borders" he replied. In other words, folks, *we saw over 250 postcards of which fewer than 10 cards each have been seen!* Thanks, Neil, for an excellent job!

March's program will be *Mount Rushmore*. Bill Buckwalter has been there, done that. He'll tell us how it looks - face to face! Expect another fine presentation.

Real photo PC shows work progressing on Washington's head at Rushmore Mountain. INSERT: Sculptor Gutzon Borglum works on models of first three heads. →

DIRECTORS, OFFICERS TO MEET

President Glass announces a meeting of the Directors and Officers for 6:15 PM, Mar. 15, Farm & Home Center just before the membership meeting.

FUTURE SHOWS

Mar. 6 Belmar, NJ John Taylor Pavilion, 9 to 4
Mar. 12-13 Mt. Laurel, NJ Postcard History Society at Days Inn, 10 to 6, 10 to 3
Mar. 26-27 Lancaster, PA. Morlatton at Farm & Home Center, 10 to 6, 10 to 5.
Apr. 9-10 Havre de Grace, MD. Community Ctr., 10-4

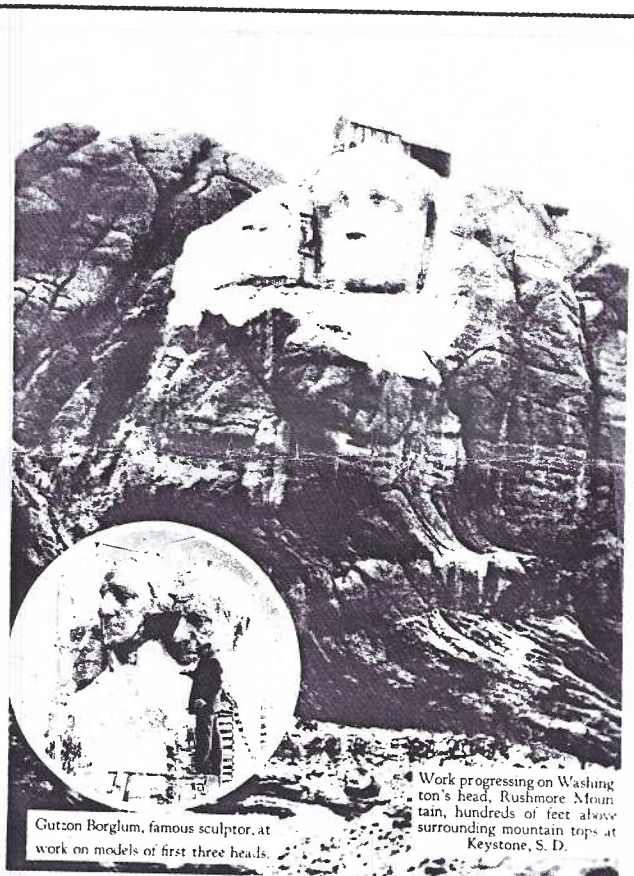
NEW MEMBERS

CAROLYN MIDDLETON #521 394 Valley View Dr., New Holland, PA., 17557. Ph. 354-9414. Along with husband and son, she collects New Holland, Copper Basin, TN
ROSALIE CORLISS #522 P.O. BOX 20899, Balt., MD 21209. Ph. 410-235-6612. Rosalie joins us with husband, John, our dealer-friend from MD. She likes recipe PCs.

BILL LEHMAN #523 1970 Temple School Rd., Dover, PA., 17315-2350. Ph. 292-2888. Along with wife, Joan, likes *all* Edison items incl. Victrola, RCA's Nipper - anything old or new!

WILLIAM P. KOHLER #524 303 Meadia Ave., Lancaster, PA., 17602. Ph. 394-8750. Collects Lancaster City and County.

GISELA S. WITHERS #525 P.O. Box 191, Geigertown, PA 19523. Ph. 610-582-2131. Collects Germany and tuberculosis.



Gutzon Borglum, famous sculptor, at work on models of first three heads.

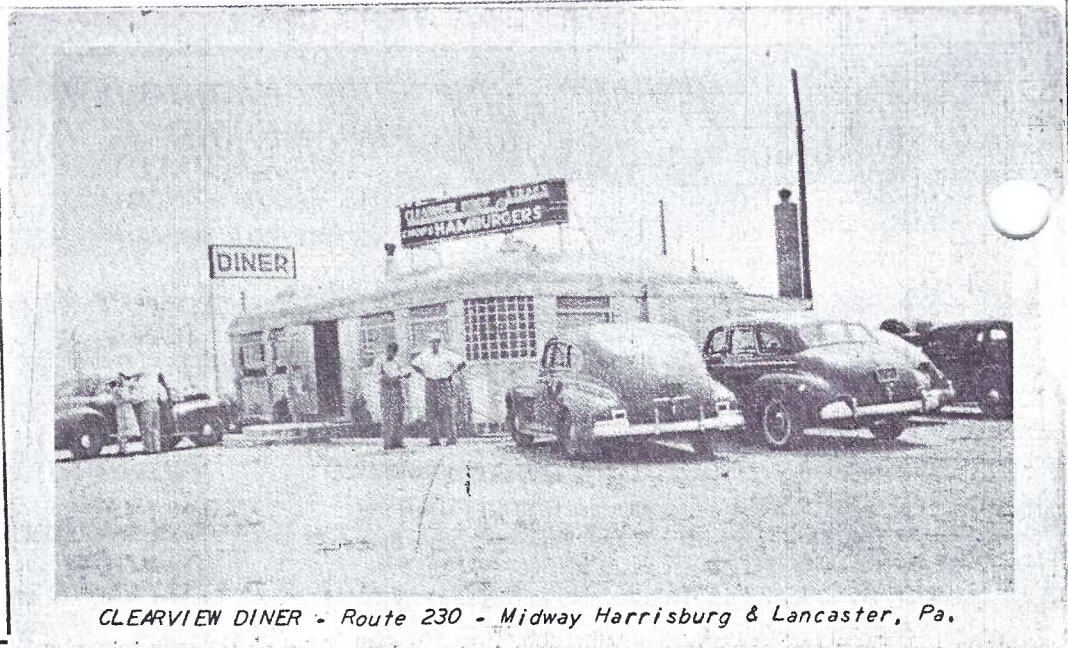
Work progressing on Washington's head, Rushmore Mountain, hundreds of feet above surrounding mountain tops at Keystone, S. D.

NOTE: UNLESS YOUR CHECK HAS BEEN RECEIVED, THIS MARCH ISSUE WILL BE YOUR LAST ISSUE OF THE CARD.

DINER CARDS - WORTH \$100 ?

Now that we have your attention, let's consider a local landmark - the Clearview Diner - on post-cards. A recent change of ownership in this popular eatery made headlines in the Lancaster Sunday News. The new owner has restored the Clearview to its original late 1940's interior, although the additional restaurant wing remains intact.

We deltiologists have known for years that diners were a colorful page in Roadside America and that

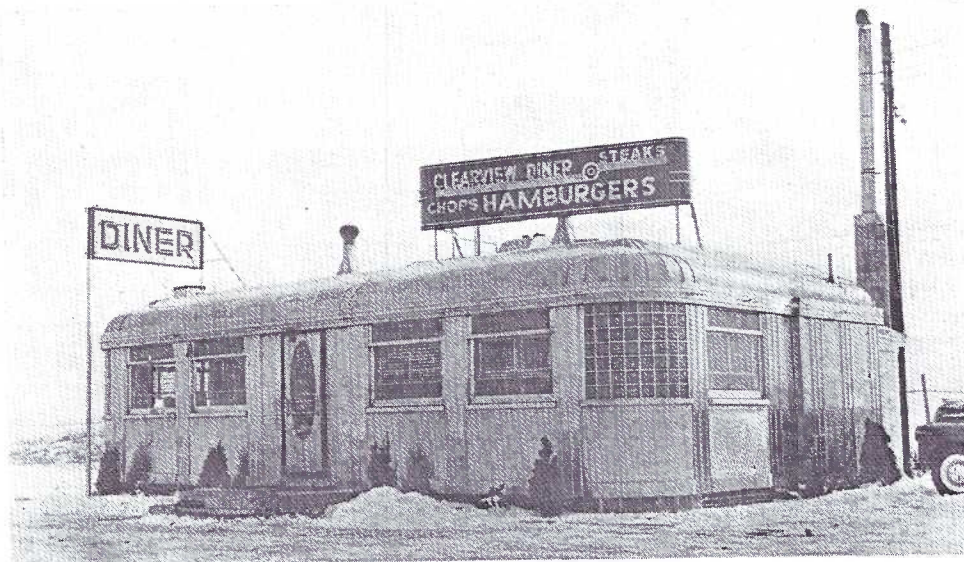


CLEARVIEW DINER - Route 230 - Midway Harrisburg & Lancaster, Pa.

Card #1 is a b/w linen and includes vintage cars of the 1940's. It might well have been published in 1948 when the diner opened. National Press of Chicago was the printer.

Card #2 is a b/w photograph with no identified publisher. It is loaned by Bernie Heisey and quite likely the scarcest of the five views and shows the parking lot shoveled clear of snow. Snow on PCs is uncommon. We're uncertain if we've placed it in proper chronological sequence but we call it #2 because a) it's more likely the addition was made to the kitchen chimney, rather than have been removed, b) the shrubbery appears to be smaller on #2 than on #3 (admittedly a subtle difference).

continued on next page

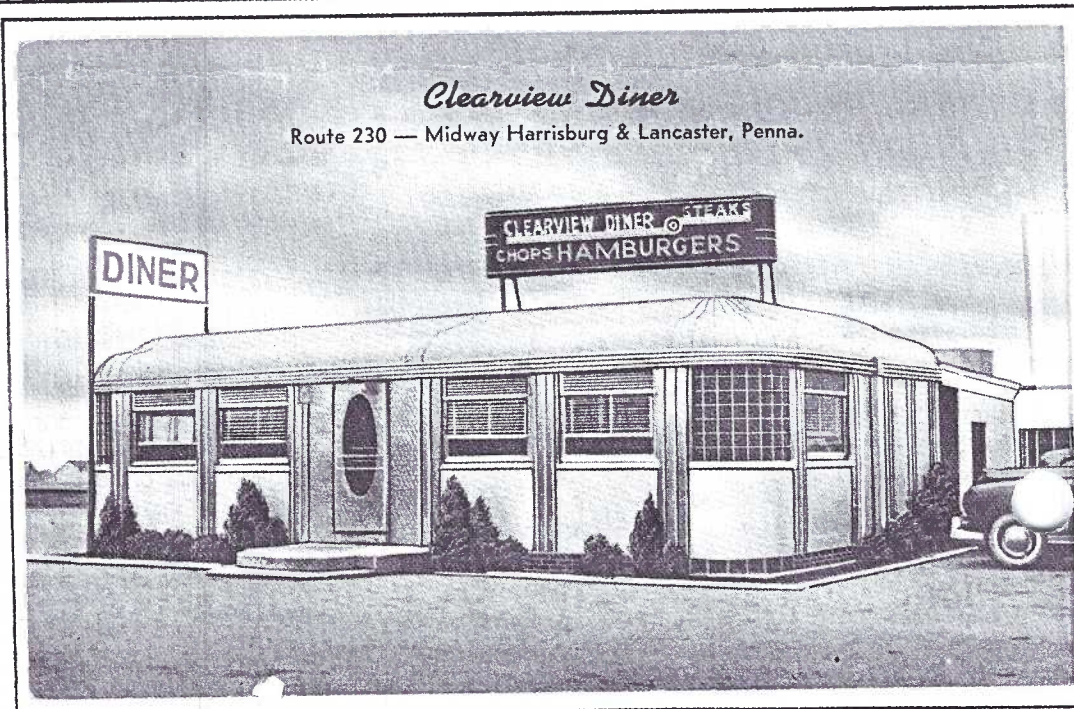


CLEARVIEW DINER - Route 230 - Midway Harrisburg & Lancaster, Pa.

the few remaining are *not* dinosaurs but rather teddy bears to be nurtured and even coveted!

The five Clearview Diner views we have on file are shown on this and the next page. For our out-of-town and out-of-state readers a word of explanation is needed regarding the description. Clearview still sits along Route #230 but we locals know it to be *between Mount Joy and Elizabethtown boros* in Lancaster County. Our educated guess would be that the original owner (and publisher) may have distributed the cards over a wide territory including the cities of Lancaster to the south and Harrisburg to the north.

Unfortunately, none of our five cards are postmarked nor do they contain any information to indicate their age although there are clues.



Clearview Diner

Route 230 — Midway Harrisburg & Lancaster, Penna.

Clearview DINER



"between Mt. Joy & Elizabethtown" is included for a more precise location. An Elizabethtown P.O. and zip code number are new as well as the phone, which is now 367-4525.

THE CONTEST

Our headline suggests an outrageous value to these five views. Considering the cards are all unused (the first two with only slightly worn corners, the latter, both sharp cornered) what value would YOU place on each of the five cards?

Each reader submitting an answer will be rewarded with a postcard gift. These cards are NOT for sale so you will not be held to your value nor will identity of participating readers be revealed. Deadline is March 31, 1999. Values will appear in a future **CARD**. Send entries to the editor's address (see masthead on page one).

At first glance, cards #2 and #3 seem to be the same view aside from the typical air-brushing out of extraneous and unromantic details (commonly done on colored linens), however, the cars on the right are not identical and the kitchen seems to have been extended in card #3.

Card #3 is a colored linen. it includes the same diner sign as well as the horizontal sign featuring steaks, chops and hamburgers. Melinger Studios of Lancaster was the publisher. It is card #82065, printed by Tichnor Bros. of Boston. Notice the chimney and utility pole have been air-brushed out. The owner, P. G. Mumma includes (on the reverse) his telephone number as 511-J.

Card #4, also a colored linen, has identical reverse information to card #3, but the phone number has been changed to 75112. It was published by Myers Mfg. Co. of Harrisburg and printed by MWM (Mid West Map) Co. of Aurora, Mo. as #17,258F. The enlarged dining area has been added as well as cosmetic changes to the diner proper. Also added are the large sign, awnings and handrails. Now the artist has left the chimney intact. A neighboring Esso station is to the north.

Card #5, a colored chrome, shows that the dining room and coffee shop - important adjuncts to the diner - receive star recognition in the sky above the building. A more modern sign, hex signs and necessary clipping (or replacement) of the shrubbery is evident. Reverse info. now includes a note that Route #283 Exit at Rheems will get the hungry traveler to Clearview and for the first time,

Clearview Dining Room & Coffee Shop



MONTHLY EXHIBITS

It was Presidents' Day for LCPC as well as the rest of the nation. Very fine boards offered stiff competition, but there could be only three winners.

HAROLD MOYER	FIRST	Hail to the Chief
WALTER MOWRER	SECOND	First President
BILL GUNTOW	THIRD	Pres. Inauguration (Taft)

HONORABLE MENTIONS	
SHIRLEY BUBB	Lincoln - His Life, His Legacy
DON BROWN	Bicen. of Birth of Jas. Buchanan
BOB KRAMER	William Henry Harrison
JIM WARD	The Physical Reagan

Thanks to all who participated. Why not try next month? Prizes are 1st - \$5 cash, 2nd - \$4 and 3rd - \$3. March's board will be St. Patrick's Day; April - Letter "C".

BARR'S NEW for LCPC

LCPC's new subscription to the popular **Barr's Postcard News**, a twice-monthly newspaper, will begin in April. Members may borrow copies from the Library.

TIMES HAVE CHANGED

I have been a collector since way back. You went into an antique shop and mentioned postcards. The owner looked down his nose at you and said "We take them to the dump". He was not impressed when I asked where the dump was! (An anonymous quote contributed by Earl Carver.)

SCOUTS OF THE WORLD



SCOUTS OF THE WORLD



SCOUTS OF THE WORLD



SCOUTS OF THE WORLD



SCOUTS OF THE W

SCOUTS OF THE WORLD



SCOUTS OF THE WORLD



SCOUTS OF THE WORLD

SCOUTS OF THE W



SCOUTS OF THE WORLD

SCOUTS OF THE WORLD



BOY SCOUTS of THE WORLD

Can you recognize nations from the headgear worn by these boy scouts?

At the funeral of King Hussein of Jordan on Feb.8, it was apparent that many nationalities were in attendance. It's too bad the commentators identified many of the dignitaries *after* they had vacated the camera shots, but chapeaus on some gave us a hint to their country. It reminded me of the long set showing representative SCOUTS OF THE WORLD. The chrome color set is identified on the reverse as "Boy Scouts of America - National Supply Division" along with two scout

insignias. It has the Dexter "Post Card" type logo along with two scout insignias. Numbers I've seen range from 87801 to 87859 as well as 87342 to 87349, accounting for approximately 60 cards. *Can any reader supply us with the exact numbers?*

Test yourself by examining these eleven chapeaus and see how many you can guess correctly. Match them to the nations which we list here (in no special order). Answers appear on page 8.

Finland	India	Indonesia	Liechtenstein
Kuwait	Nigeria	Madagascar	Malaysia
Philippines	Sudan		Syria

Brundage Beauties

St. Pat's set by Sam Gabriel

St.Patrick's Day Series #140 is a popular group of ten cards by Sam Gabriel (The company's logo is a large open "G" on an artist's palette.) The colorful set has shamrock borders and seven subjects (six girls and a boy) are attributed to Frances Brundage although her name is absent on all of the cards. A comparison of the children's faces with signed Brundage cards of other holidays will quickly allay any doubts you might have.

The Standard Postcard Catalog (1982) is a wealth of information, but James L. Lowe's listing of the #140 set as being only six cards has since been proven incorrect.

We list the first line of each card and a brief description should you wish to complete the set. Of course, Series #140 is found on the reverse of the cards.

Here's dear old Ireland	(clasped hands and harp)
I bid you the top o' the mornin'	(boy steers old plane)
Let others seek their pleasure	(girl waves on beach)
Sweet Erin-go-Bragh	(shown)
Thy harp-striking bards	(girl plays harp on shore)
The pride of Erin's Isle	(shown)
The sweet little, green little shamrock	(shown)
Wert thou all that I wish thee,	(top hat, harp, shamrocks)
no caption	(USA and Irish flags crossed)
no caption	(girl plays decorated harp)

St. Patrick's
Day
Greetings

The pride of Erin's Isle is she,
Dear Irish Molly O!

St. Patrick's
Day
Greetings

The sweet little,
green little shamrock
of Ireland.

St. Patrick's Day Greetings

Sweet
Erin-
go-Bragh.

Editorial

The Millennium Will Wait. The Media Won't.

In the past ten years I've restrained from mentioning headline news when it was unrelated to Postcards. Sometimes it wasn't easy. (If you had the freedom LCPC has extended me to use pen and paper as I please, would you have been able to ignore the black man in the bronco or the white girl in the blue dress?) Staying focused on our hobby has, to say the least, has not always been easy.

But now I must vent my spleen. The confusion in some people's minds is justified. They're good in arithmetic and yet everyone else seems to be miscounting. 1 to 10 is a complete decade = 10 years. 1 to 100 is a century = 100 years. 1 to 1,000 is a millennium and if you agree with me, the year 2,000 is the LAST YEAR OF THIS MILLENNIUM and don't let the media or the man in the White House or anyone else whose supposed to be intelligent tell you differently.

The "next millennium" will begin on January 1, 2001. The rest of the universe (aside from you and me) will do its best to makes us think otherwise.

ENTER THE ALL MIGHTY DOLLAR

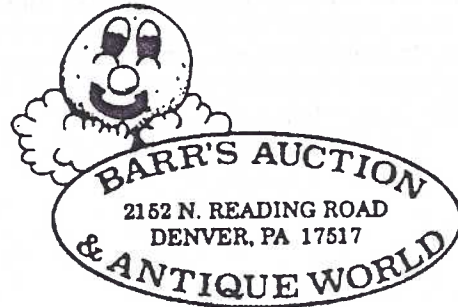
Why, then do they think "less than 300 days from now" is the next millennium? Have they all lost their sanity? Did they all take a New-New Math and we (you and I) were deprived? I think not.

"They", if you examine carefully, are all selling something = a product, a service, a few billion giveaways and TV and the newspapers, the media, lead the commercial charade.

You may not remember when parents were dismayed that department stores began selling Christmas items two whole weeks before the Holiday! You probably don't even remember BBF (before Black Friday) when shoppers began their Christmas buying the day after Thanksgiving. The latest generation thinks Christmas comes right after Halloween costumes. Right?

So why shouldn't the same merchant start selling the millennium a measly 365 days early?? Make \$en\$e? Sure it does! That way, they'll have two years to push their products!!

John Klein Postcards



Exit 21
Pa. Turnpike

Saturday 10-5
Sunday 8-5

Have your dues been paid?

Those of you who intended to include the "next millennium" on your 1999 NPW cards, give it a second thought. Next year (May 7 to 13, 2000) is ample time.

So you and I will remain party poopers, kill joys and wet blankets and when Dec. 31, 2000 comes along, we can meet in my kitchen (it should be large enough to include any disciples) and have a gala evening ringing in the New Millennium that begins January 1, 2001. JFW.

"The Bunch"

Taken St. Patrick's eve at 324 N. Lime (St.) Lancaster. E.R.P.

The real photo card on the right was developed by Lancaster Photo Supply House and posted to Miss Blanche Miller of 336 S. Ann St., City on April 10, 1906.

The North Lime Street address was occupied by a family of Raubs. We might speculate that at least one Raub is in the picture. A head count reveals eight women and seven men, quite possibly the photographer is the eighth reveler.

The couple in the foreground is costumed. Do they wear oriental kimonos? Some of the massive chrysanthemums have been parceled to members of "The Bunch".



"The Bunch"
Taken St. Patrick's
eve at 324 N. Lime,
Lancaster.
E.R.P.

WE WERE THERE

March 1999,pg.7

This month is the 20th anniversary since "Three Mile Island". It's not odd that people would refer to IT as "Three Mile Island",the IT being the event,not the place. Those of us who live less than 30 miles from TMI look back on the event as though we were there. A brief listing will refresh memories of those days in the spring of 1979.

Mar.28 - 4:00 AM A pump designed to circulate water to a secondary cooling system in Unit 2 fails. Deprived of vital cooling water,heat generated by fuel assemblies in the reactor core isn't removed fast enough. The temperature rises. Pressure climbs to 2,350 pounds per square inch (psi) inside the core. Control rods drop into the core,shutting off nuclear fission. Another valve opens,permitting superheated water (100,000 gallons) to discharge into a holding tank below the reactor and onto the floor of the containment building. The water evaporates,releasing radioactive particles vented into the atmosphere. Emergency shutdown is completed.

Mar.28 - 7:00 AM Met-Ed notifies PA.Emergency Management Agency. Dauphin,York,Cumberland and Lancaster counties alerted. Goldboro's mayor (less than two miles west) is not notified.

Mar.28 - 4:00 PM After conflicting reports,NCR rep. announces "there has been core damage...a lot of radiation inside the building".

Mar. 29 - Emergency officials on alert in nearby counties.

Mar.30 - 6:40 to 9:00 AM Sudden and uncontrolled bursts of radiation create mid-morning panic. Gov.Thornburgh recommends everyone within 10 miles of TMI remain indoors.Nearby schools close.Some residents, especially in Goldsboro,have evacuated their homes.

Mar.31 Businesses feel impact over nearly 200,000 area residents who have temporarily sought refuge with family members,are at Hershey Park evacuation center or elsewhere. York County Civil Defense institutes 10 PM to 7 AM curfew and plans for evacuation.

Apr. 1 Pres. and Mrs. Carter,Gov. and Mrs. Thornburgh tour TMI to reassure contamination has been contained.

Apr. 2,3 Most area schools,incl. Perry County, remain closed. They are ear-marked as evacuation centers.

Apr. 3 The hydrogen bubble that developed on Mar.31 is reduced significantly as is the reactor core temperature. By the following week normalcy has returned to the area, particularly after Gov.Thornburgh's report on April 6.

12 TMI Postcards

Italics indicates postcard caption

Deb-Kay Corp.,P.O.Drawer 2741

Harrisburg,PA,17105

(Giant 6" x 9" color chrome aerial view with all four cooling towers emitting vapor)

#161,360 *Aerial view of 3-Mile Island Nuclear generating station,units #1 and #2 scene of the nation's worst nuclear accident...*

(giant 6" x 9" color chrome aerial view. Cooling towers not in operation.Different view from above)

#165,934 (same caption as #161,360)

GPU Nuclear Corp.

Color aerial view,3 1/2" x 5 1/2". Printed message "Thank you for your recent visit..." signed by Bill Gifford,Vice President of Communications.

GPU Nuclear Corp. (?)

(Set (?) of 4" x 5 1/4" black and white cards with 3/4th of reverse for address,remaining 1/4 for "Return Address".)

Ea.reverse caption,in addition to intro words below,reads "...jointly owned by Metropolitan Edison Co.,Pennsylvania Electric Co. and Jersey Central Power & Light Co.,



Three Mile Island workman prepares to enter contaminated area, Middletown, Pa.
Photo by Met-Ed

all subsidiaries of General Public Utilities Corp."

Clean vapor rises from two 369-foot towers of Unit No.1.. Picnic tables,available at the Observation Center...

The production of electricity from the atom is the topic... (an interior view of displays at Observation Center)

Three Mile Island Nuclear Generating Station provides... (night view)

Distributed by Heritage Enterprises,1979

P.O.Box 62, Middletown, Pa.,17057

(3 1/2" x 4 7/8" black and white chrome.See Illustration.)

Three Mile island workman prepares to enter contaminated area,Middletown,Pa. Photo by Met-Ed

Mike Roberts Color Productions, Oakland, CA
...for PA. Beauty Views,622 Frost Lane*

Lanc.,Pa., 17601

C33664 - color photo: Les Smith

**(ED. NOTE: This might be a fictitious address .I'm unable to locate it on local maps or in local directories.)*

(color 3 1/2" x 5 1/2" aerial view with scalloped edge)

Three-Mile Island,Middletown,Pennsylvania

...for Yeingst's Match & Card Service,
126 Primrose Lane, Newville,PA,17241.

This card is identical to card for PA. Beauty Views but has straight,not scalloped edge.

Photographics Inc., 29 S.Arlene St,
Harrisburg, Pa.17112

(color 4 1/8" x 5 7/8" aerial view)

SDM 970 Three Mile Island,Middletown,Pa.,the site the nations worst commercial nuclear accident,March 28, 1979.Unit #1,with water vapor coming from its cooling towers,was restarted in October 1985,while the damaged unit #2 on right remains shut down. (Ed.Note:wording and punctuation as it appears on PC.)

Stel-Mar,329 Rhoda Dr.,Lancaster,Pa.

SM-303 Photo by Marshall Dussinger,1979

(color 4 1/8" x 5 7/8" aerial view)

Three Mile Island/ Nuclear Power Generating Station...

Did You Know?

MARCH is Women's History Month

MARCH 8-14 is Universal Women's Week

MARCH 8 is International Women's Day

and so we offer this pictorial postcard tribute, Bamforth #1403 in the Domestic Comic series.

Postcard Collector Magazines

\$5 per year (12 back issues)

(includes first year - 1984)

Great postcard reading! Everyone will tell you the older issues were the best. Early calls or PCs get first choice from years 1984 thru 1991. Free postage or one free year for the first offer to buy all 8 years.

Polypro Postcard Pages

\$14 for 100, \$3 for 20 all sizes

Polypro Postcard Sleeves

\$1.50 for 100, \$4 for 300 standard size

SALE! 4,000 Postcards HALF PRICE!

Jim Ward. Phone 717-721-9273

1795 Kleinfeltersville Rd., Stevens, PA, 17578-9773

Answers to Boy Scout quiz.



Left	Center	Right
Syria	Indonesia	Liechtenstein
Nigeria	Madagascar	Finland
Malaysia	Philippines	Sudan
Kuwait		India

If you got a perfect score, let us know. We'll reward you - \$20 cash.

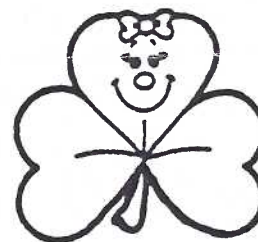
"I'm going to have pneumonia!"
"Yer having nothing till I've had a new hat!"



MORLATTON POST CARD CLUB INC.

Presents Postcard Show #24

Farm and Home Center
1383 Arcadia Road
Lancaster, PA 17603
(off Manheim Pike Rte. 72)



Friday, March 26, 1999 - 10 A.M. to 6 P.M.
Saturday, March 27, 1999 - 10 A.M. to 5 P.M.

Admission \$1.50
(25 cents off with ad)

For more information call
Kay Feight, (717) 263-1638
Leon Rowe, (610) 444-0641

N
O
P
R
E
S
H
O
W
B
U
Y
I
N
G