

# The Schuylkill Navigation

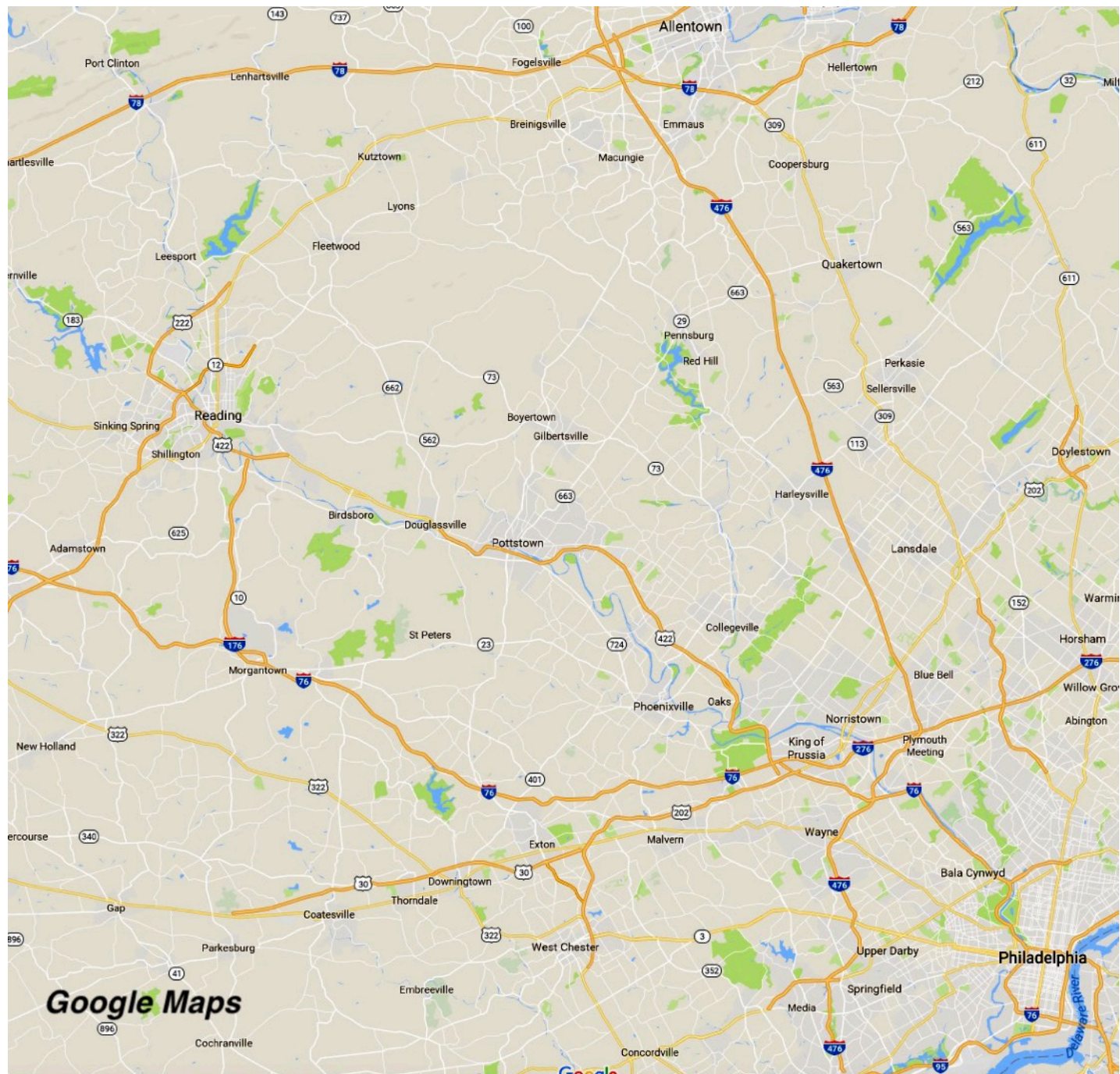
(aka The Schuylkill Canal)

A Picture Postcard Journey Downriver



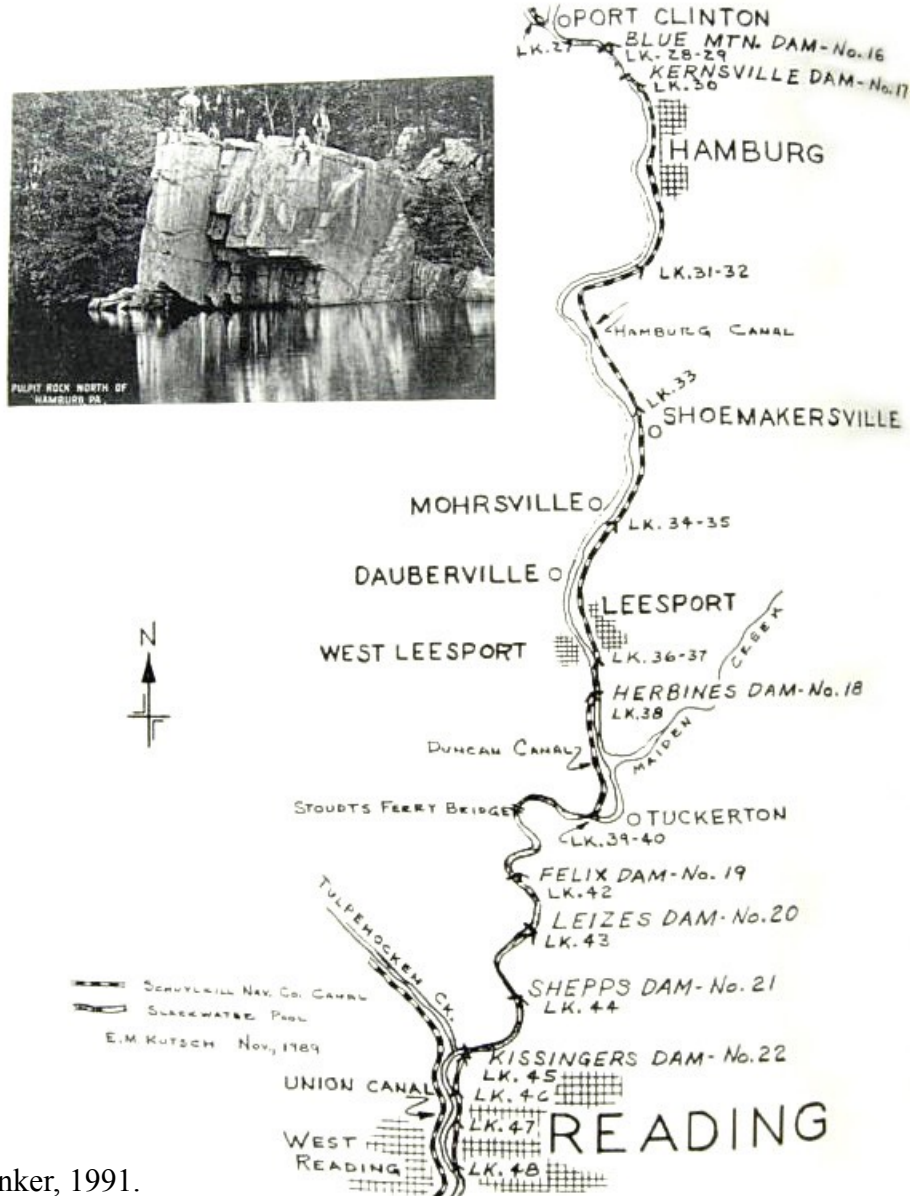
Presented by Aaron Heckler

*All images ©2018 Heckler collection*

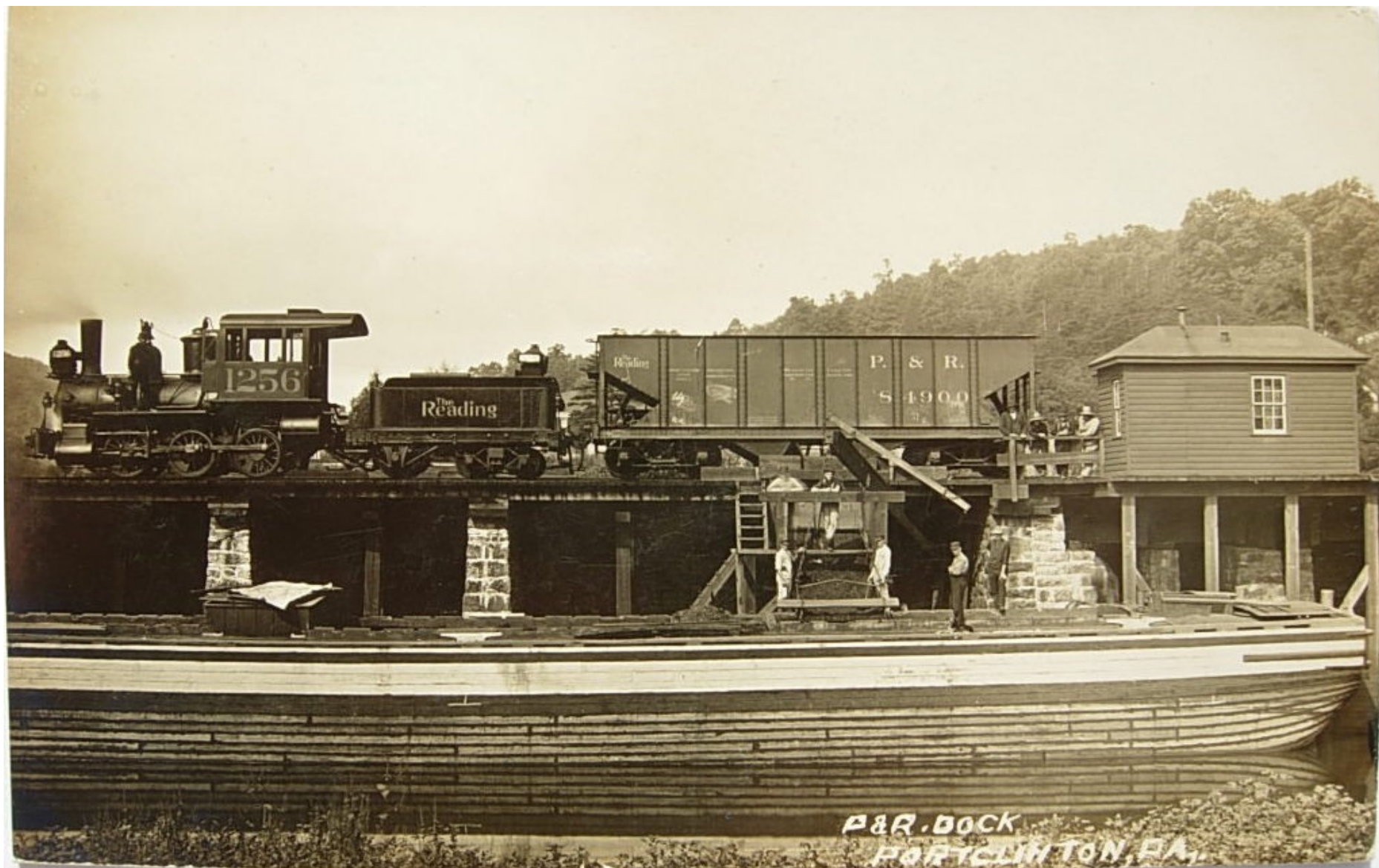




# SCHUYLKILL NAVIGATION PORT CLINTON TO READING



Source: *The Schuylkill Navigation:  
A Photographic History.* Harry L. Rinker, 1991.











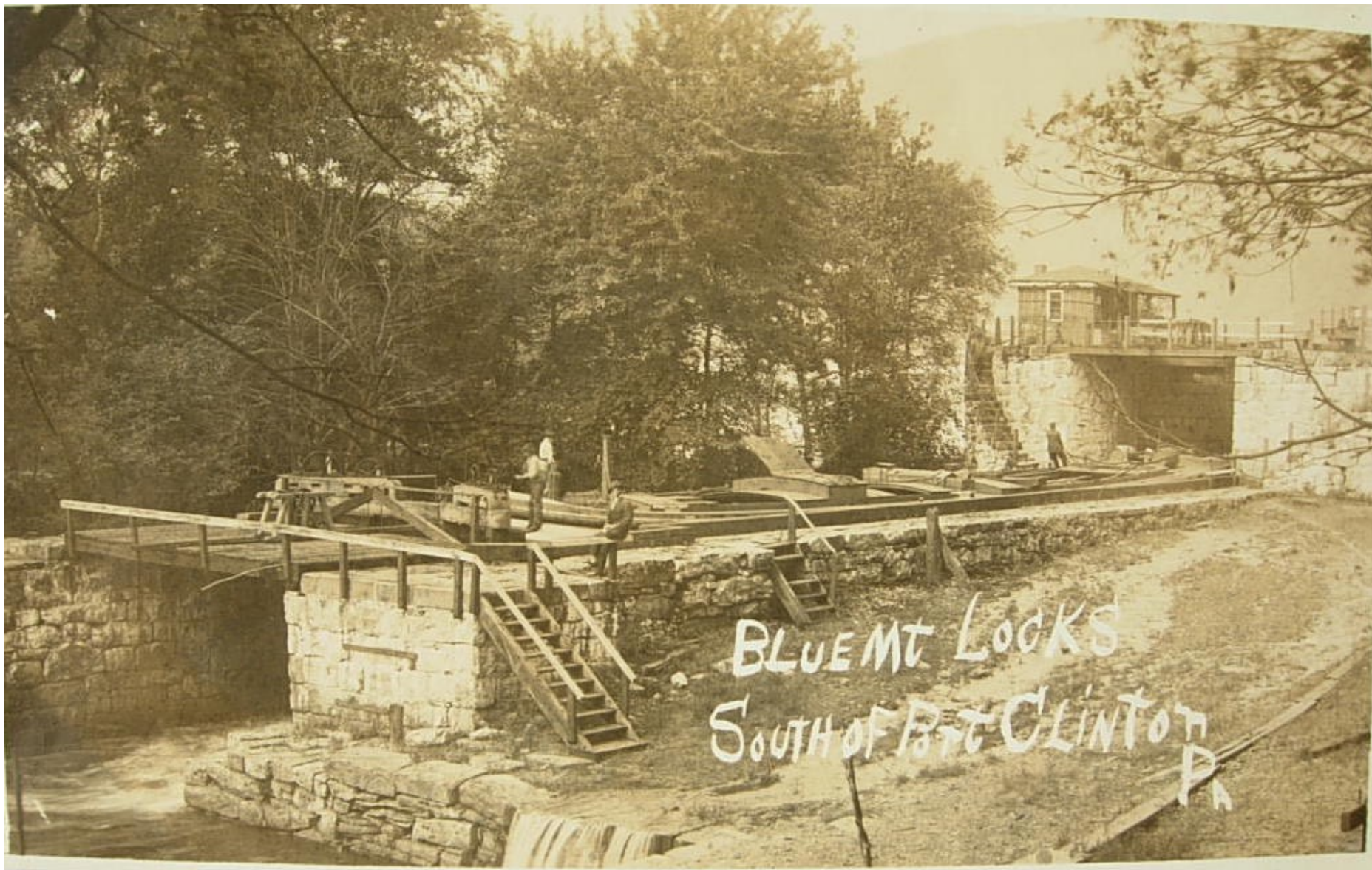


SCHUYLKILL RIVER SOUTH OF PORT CLINTON, PA.





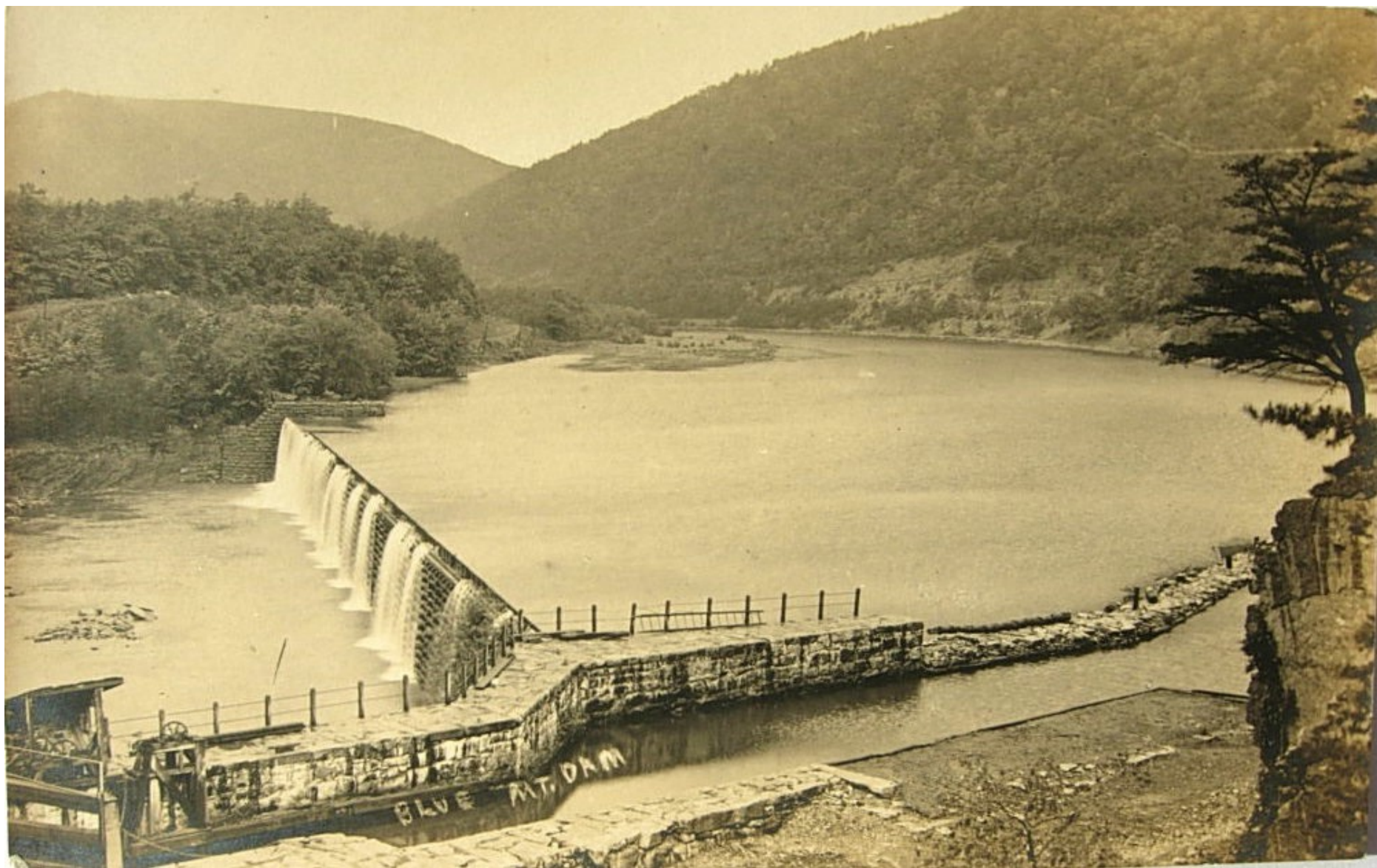














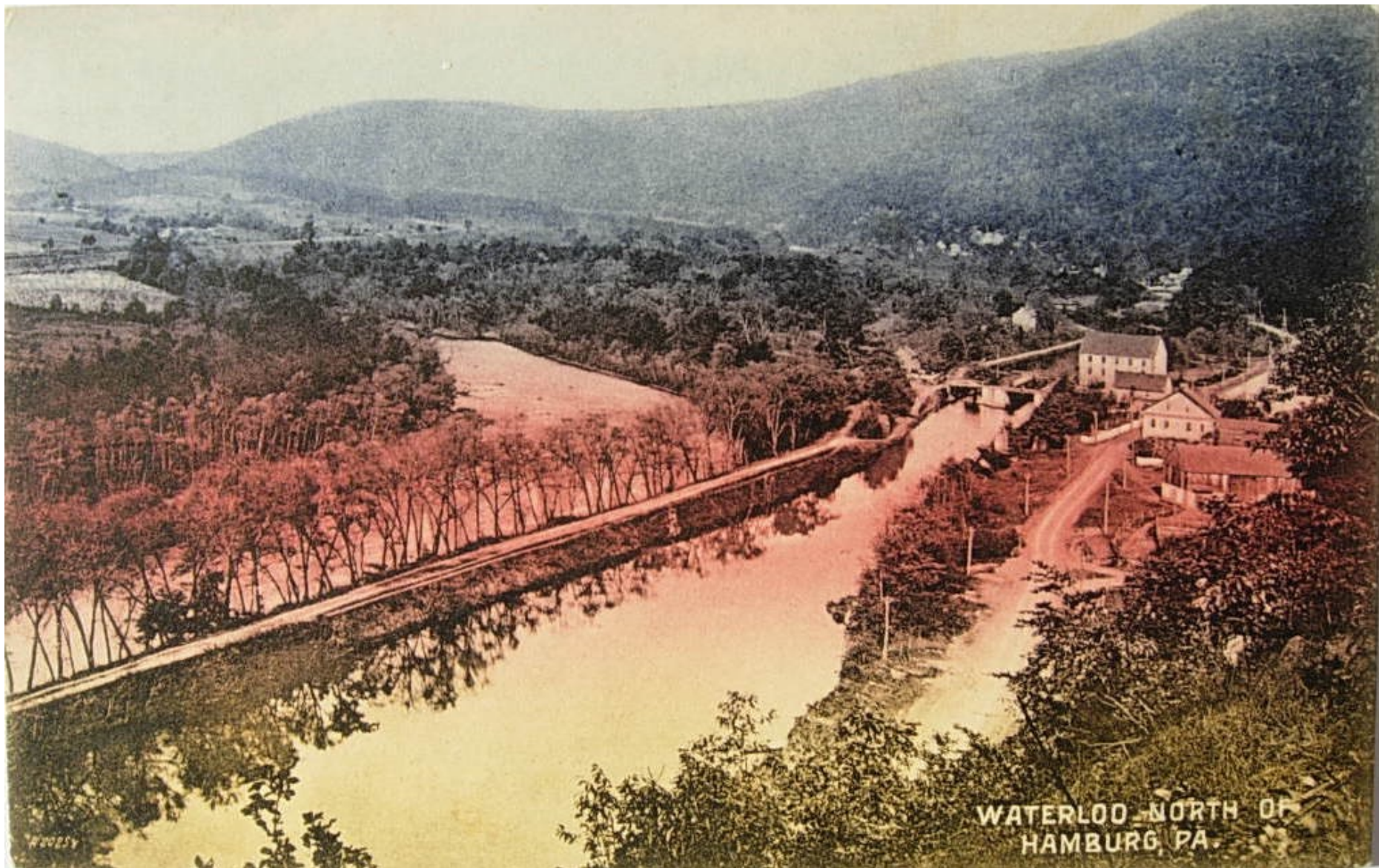


LARGE BLUE MOUNTAIN DAM  
HAMBURG, PA. 26



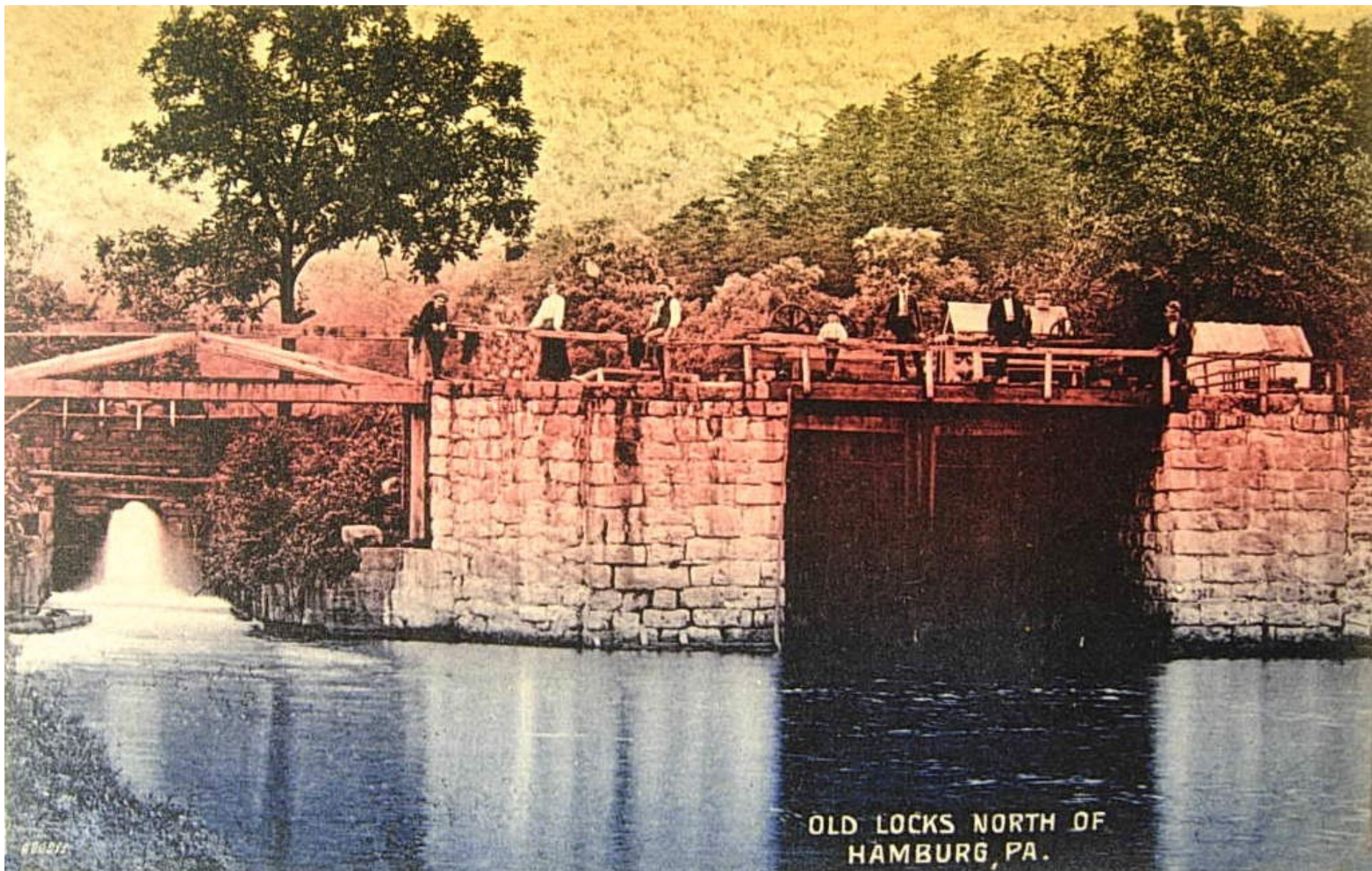






WATERLOO NORTH OF  
HAMBURG, PA.

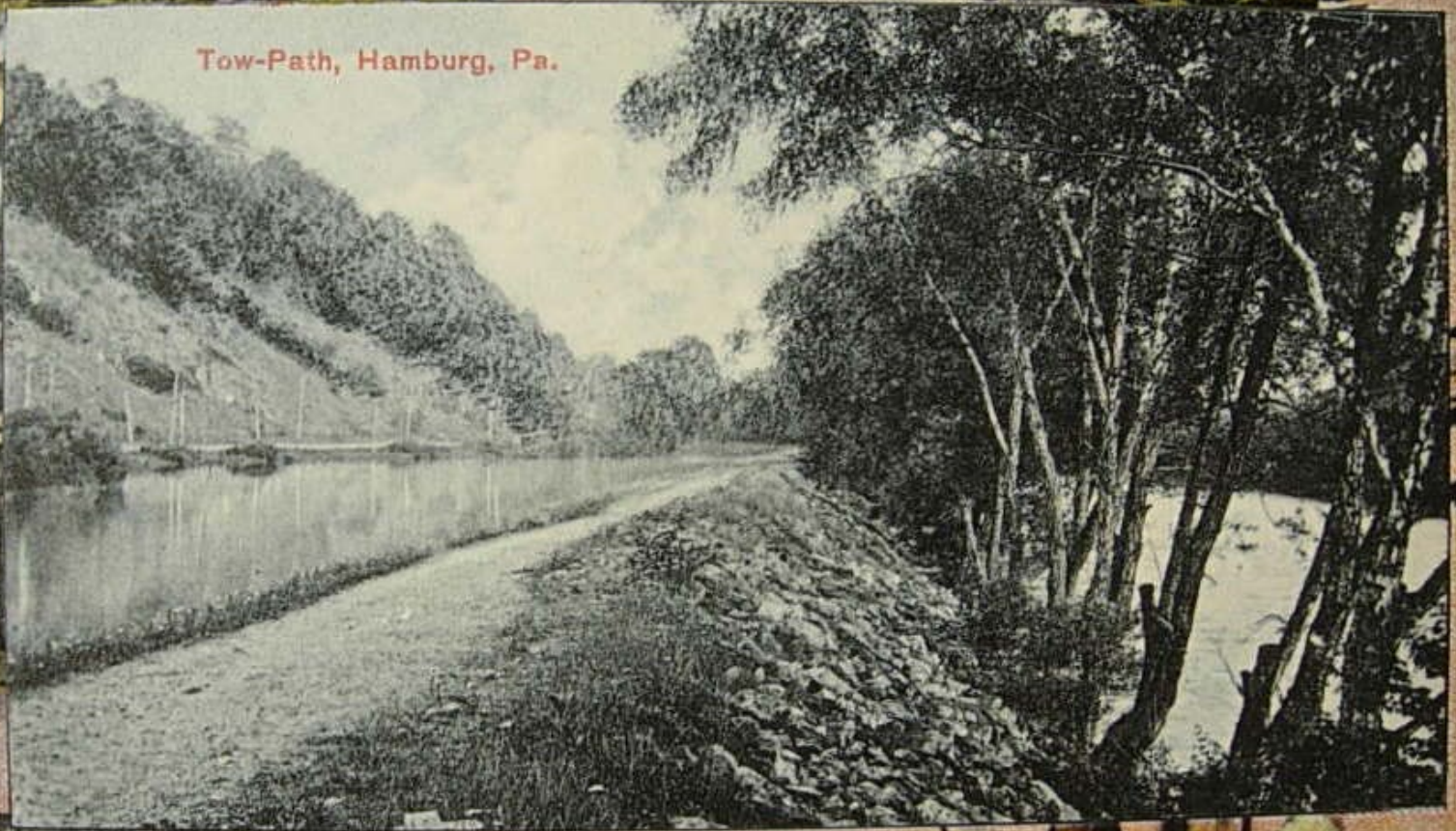




OLD LOCKS NORTH OF  
HAMBURG, PA.

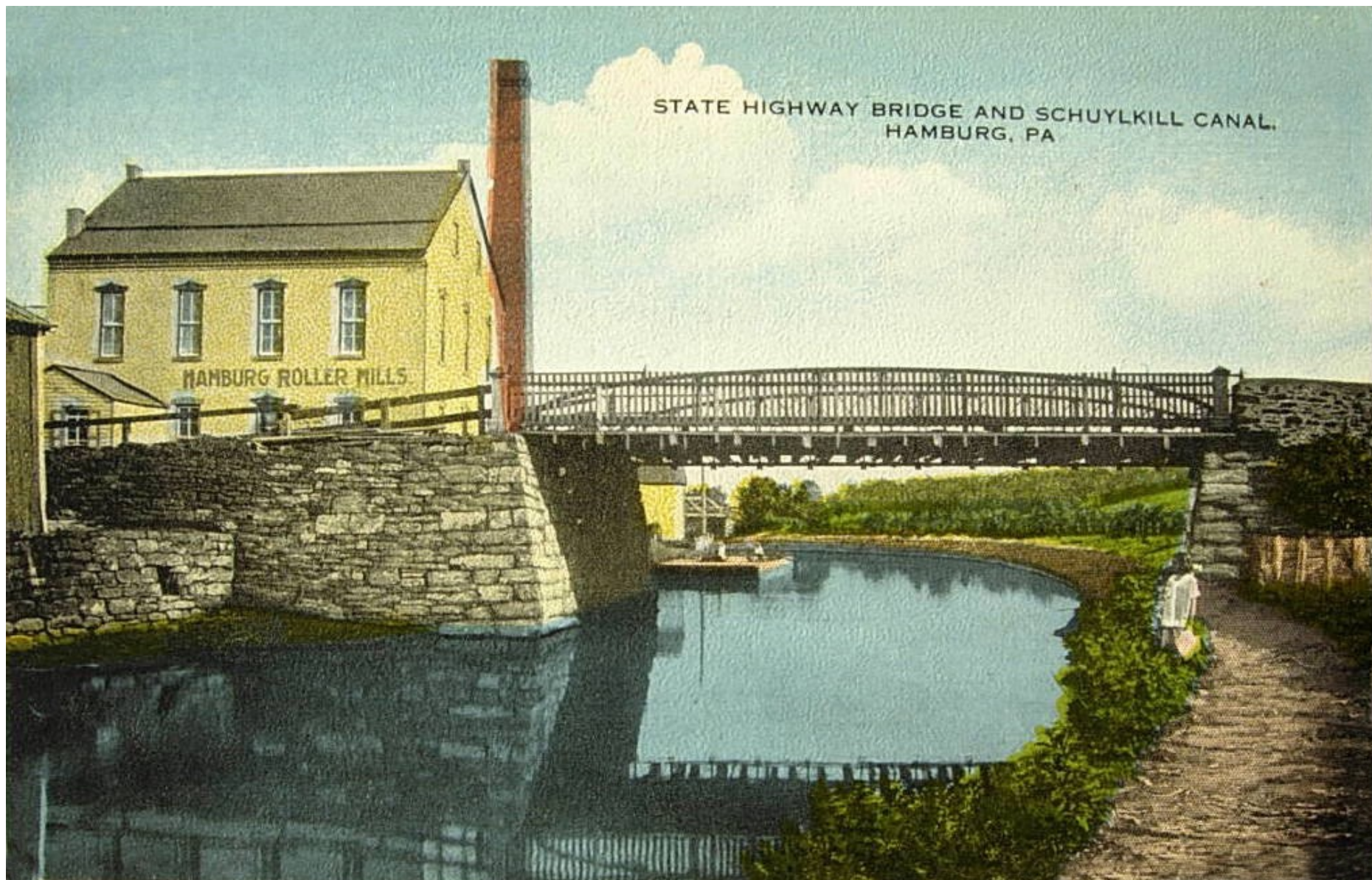


Tow-Path, Hamburg, Pa.





STATE HIGHWAY BRIDGE AND SCHUYLKILL CANAL,  
HAMBURG, PA













THE CANAL LOCKS  
SHOEMAKERSVILLE PA.

















BIRD'S EYE VIEW MOHRSVILLE PA

Dear Ellen: He arrived safe but had to stand all the way from Adams town - this will give you an idea of where I come from. Sallie Westman







Mohrsville Pa







SCH. CANAL  
LEESPORT, PA

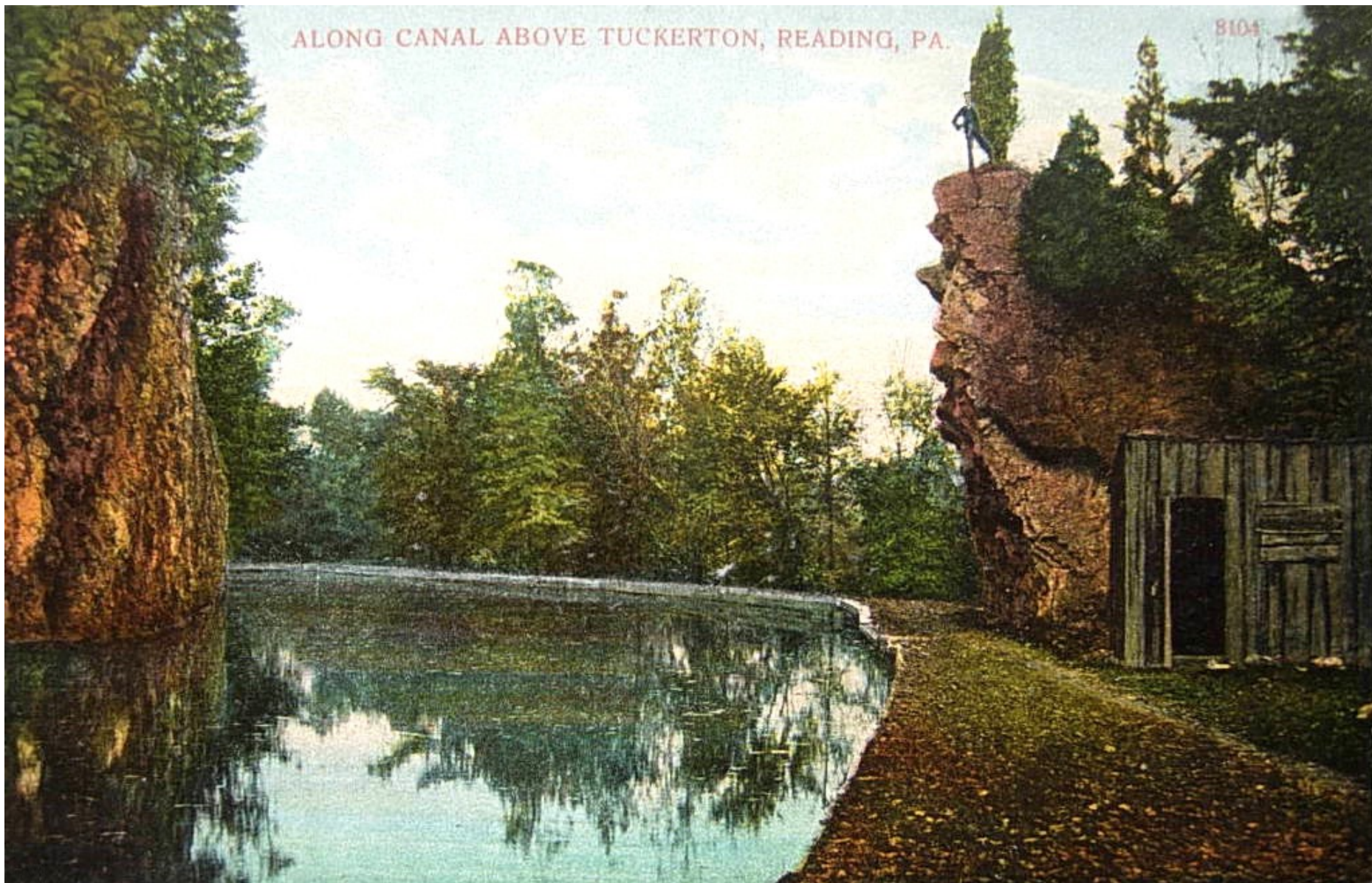






ALONG CANAL ABOVE TUCKERTON, READING, PA.

8104





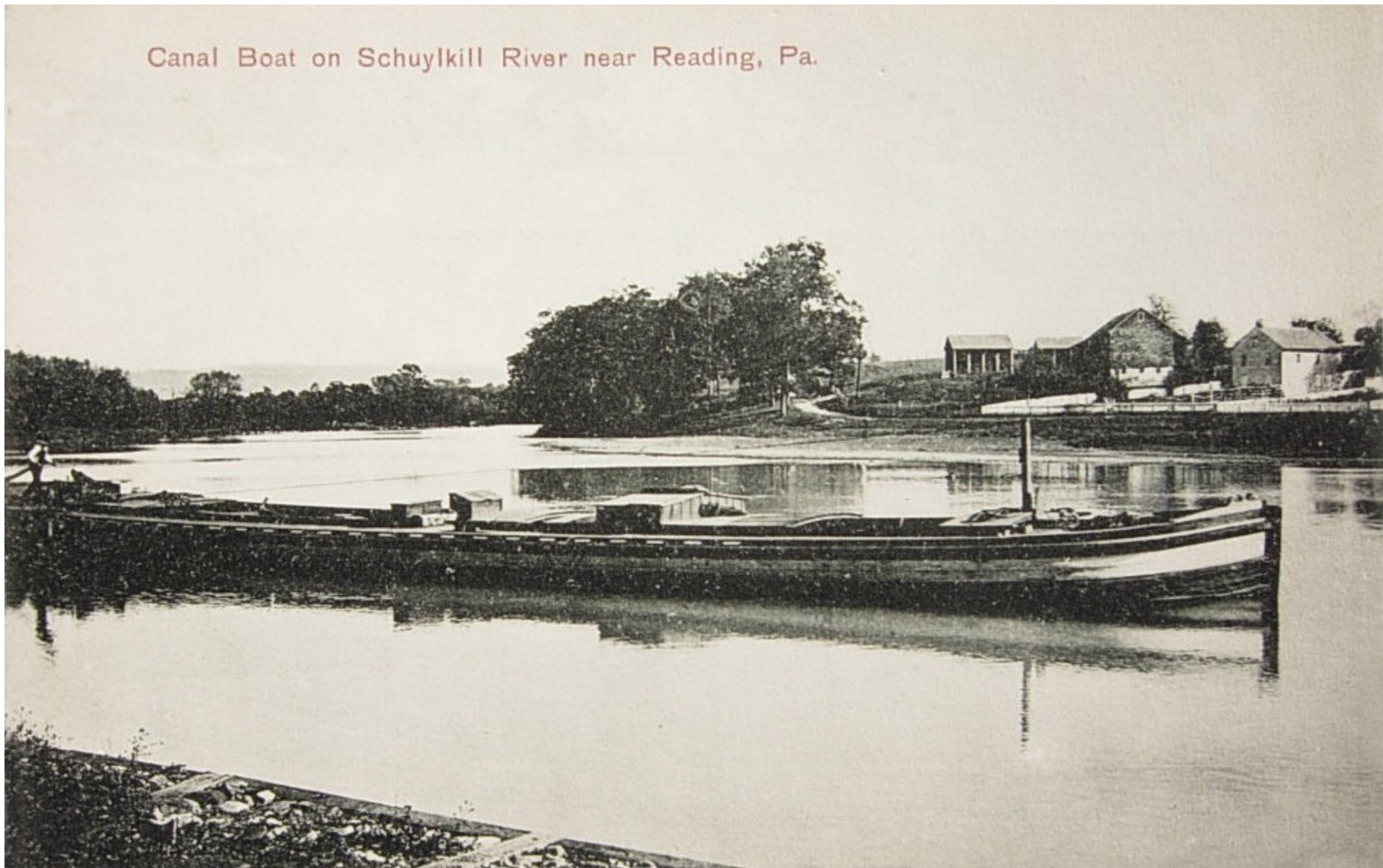
Peococks Lock

Schuylkill River near Reading Pa.





Canal Boat on Schuylkill River near Reading, Pa.

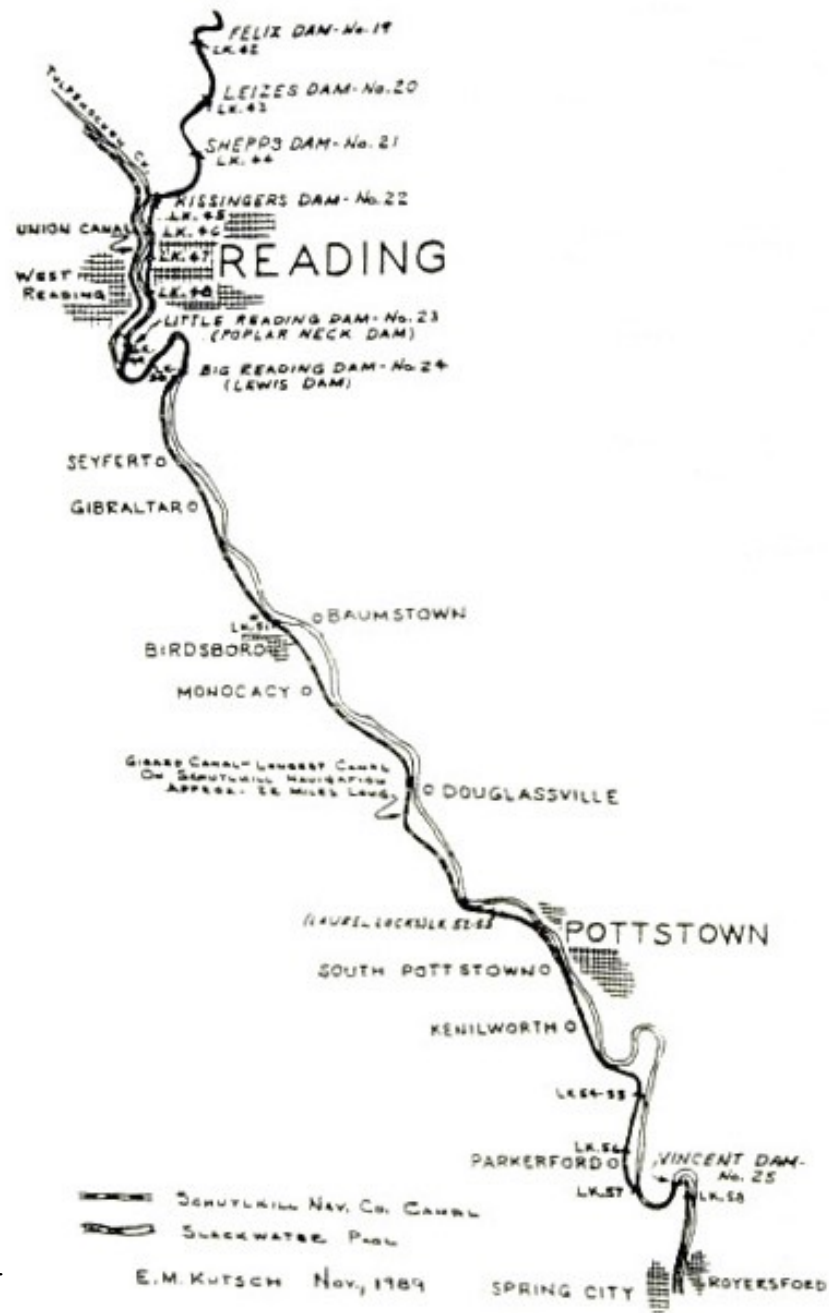






Stoudts Ferry Bridge above Reading, Pa.

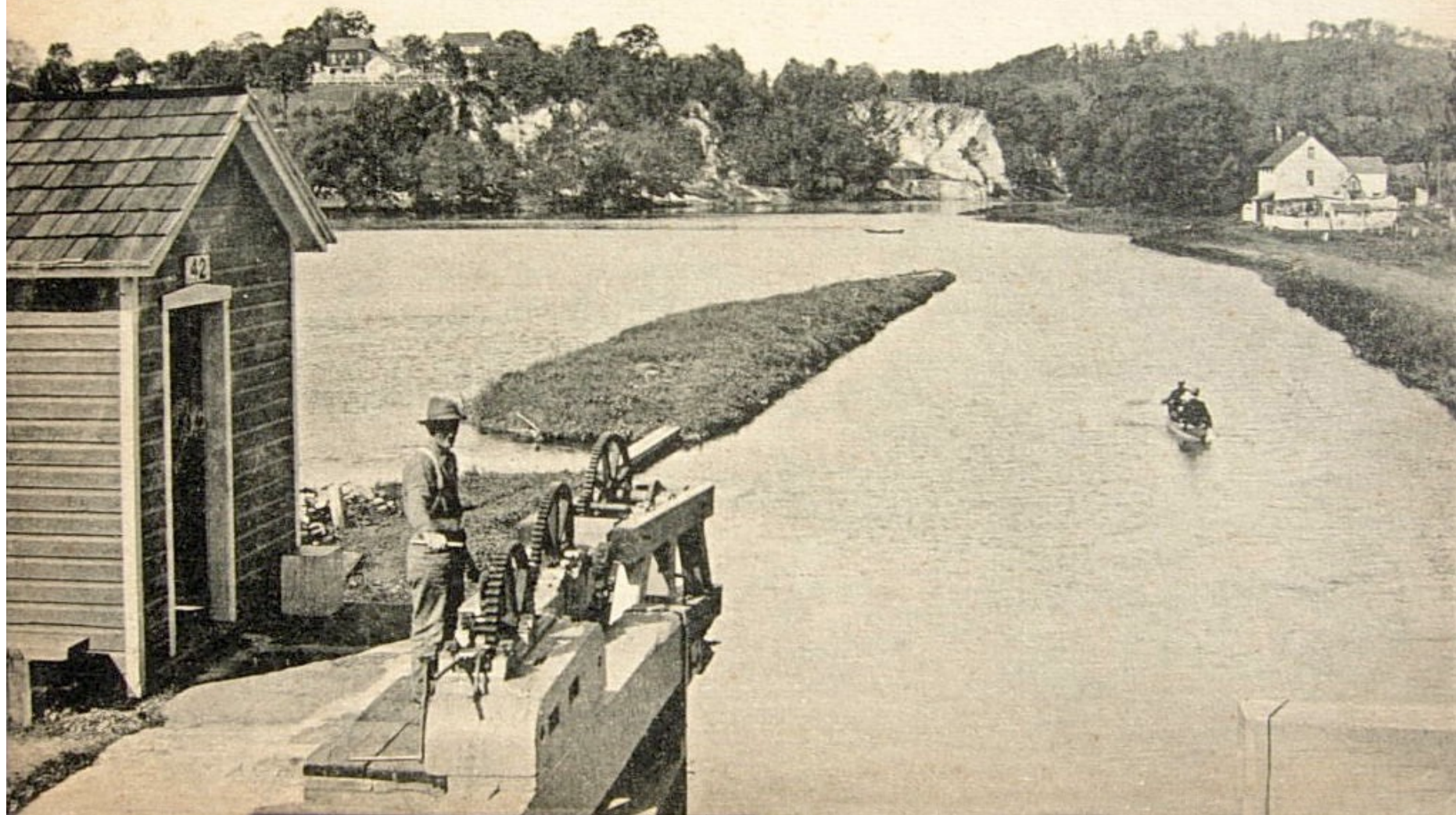




Source: *The Schuylkill Navigation:  
A Photographic History*. Harry L. Rinker, 1991.  
(detail from page 56)



*At Rit's Lock, Schuylkill River near Reading, Pa.*





Wentzel's Lock, Schuylkill River, Reading, Pa.





*At Wentzel's Lock, Schuylkill River near Reading, Pa.*





Leaving the Lock, Schuylkill River, Reading, Pa.



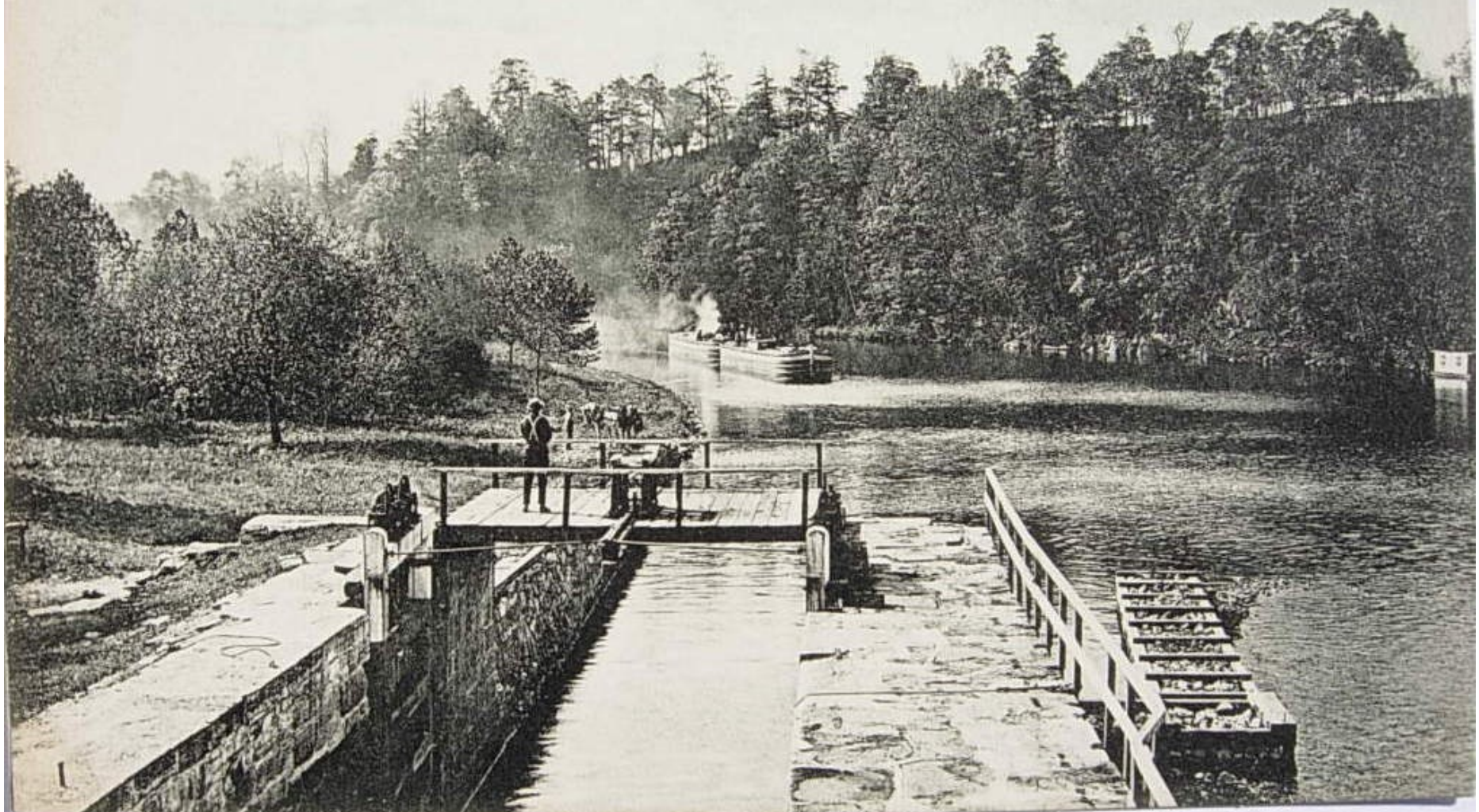


House Boat "Pomona"  
on Schuylkill River, Reading, Pa.





Approaching the Lock, Schuylkill River, Reading, Pa.

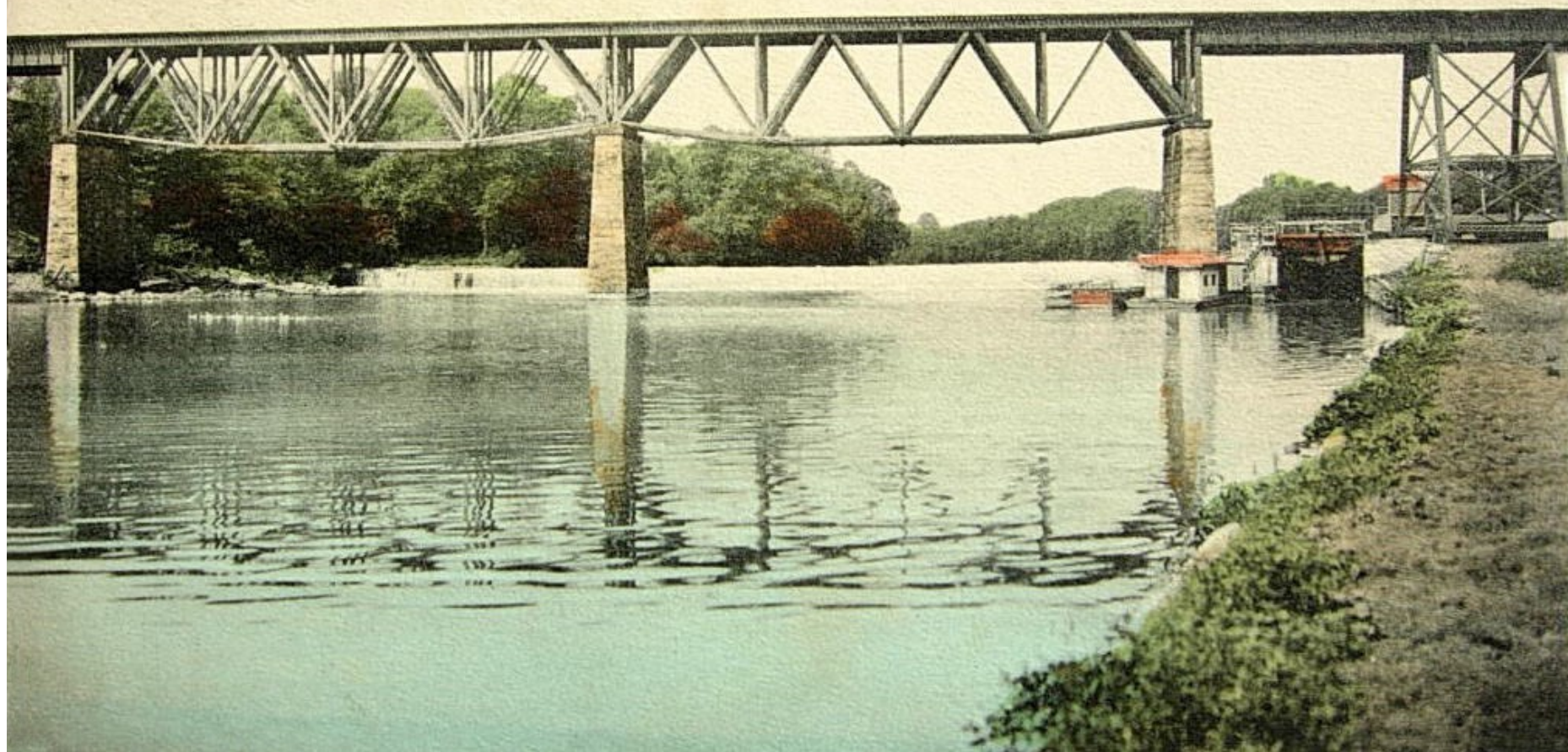








Belt Line Bridge crossing Schuylkill above Reading, Reading, Pa.

















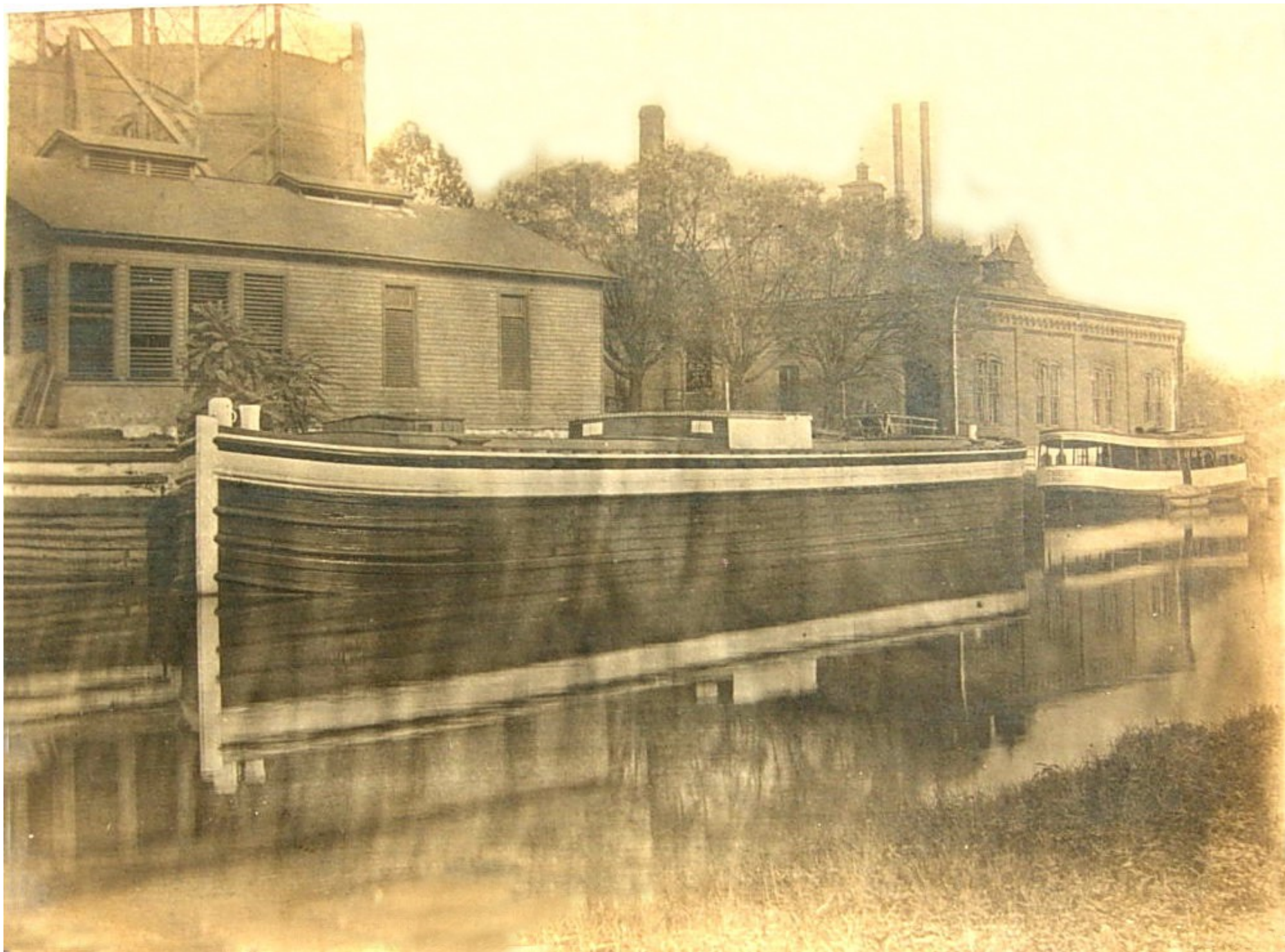


P.R.R. Depot  
Reading, Pa.



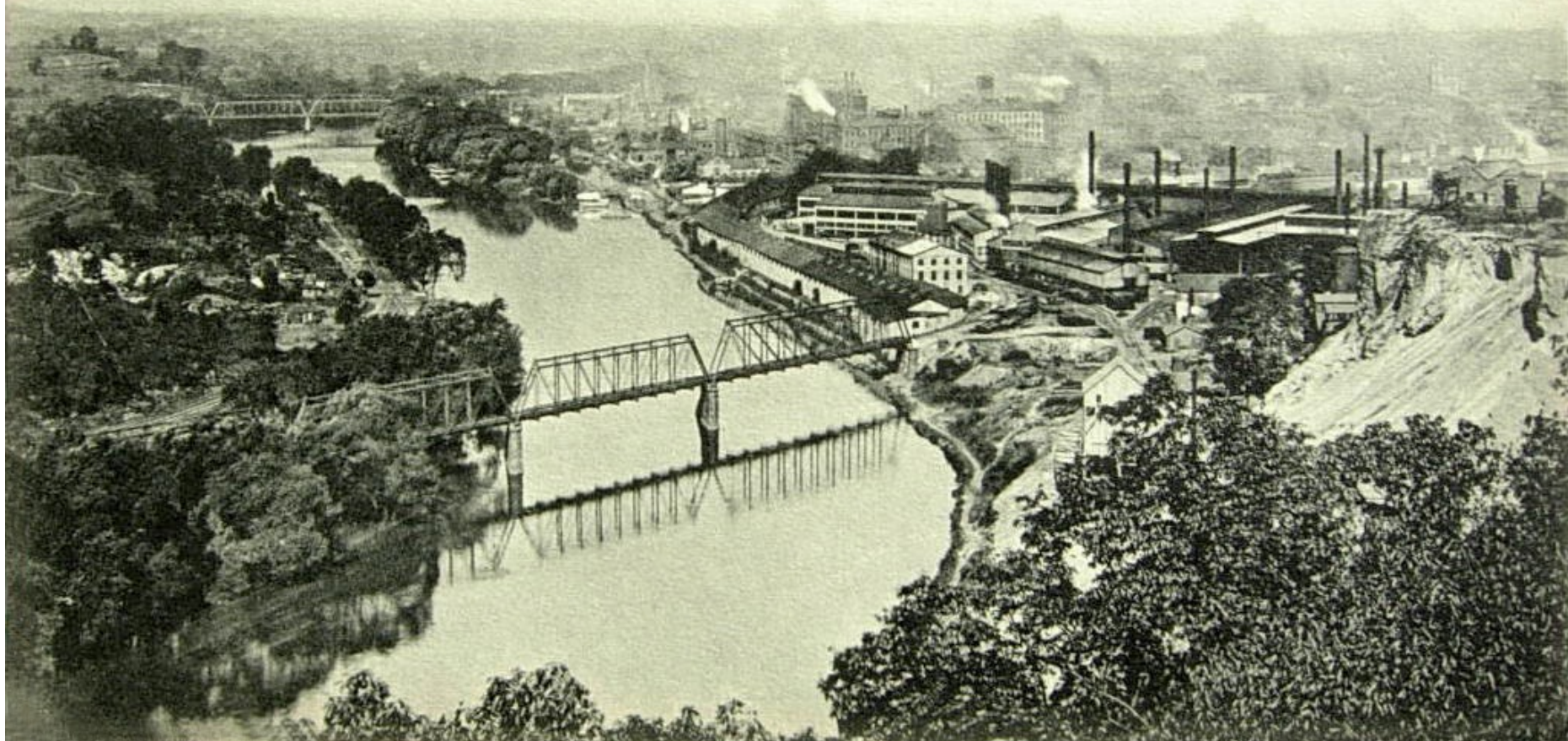




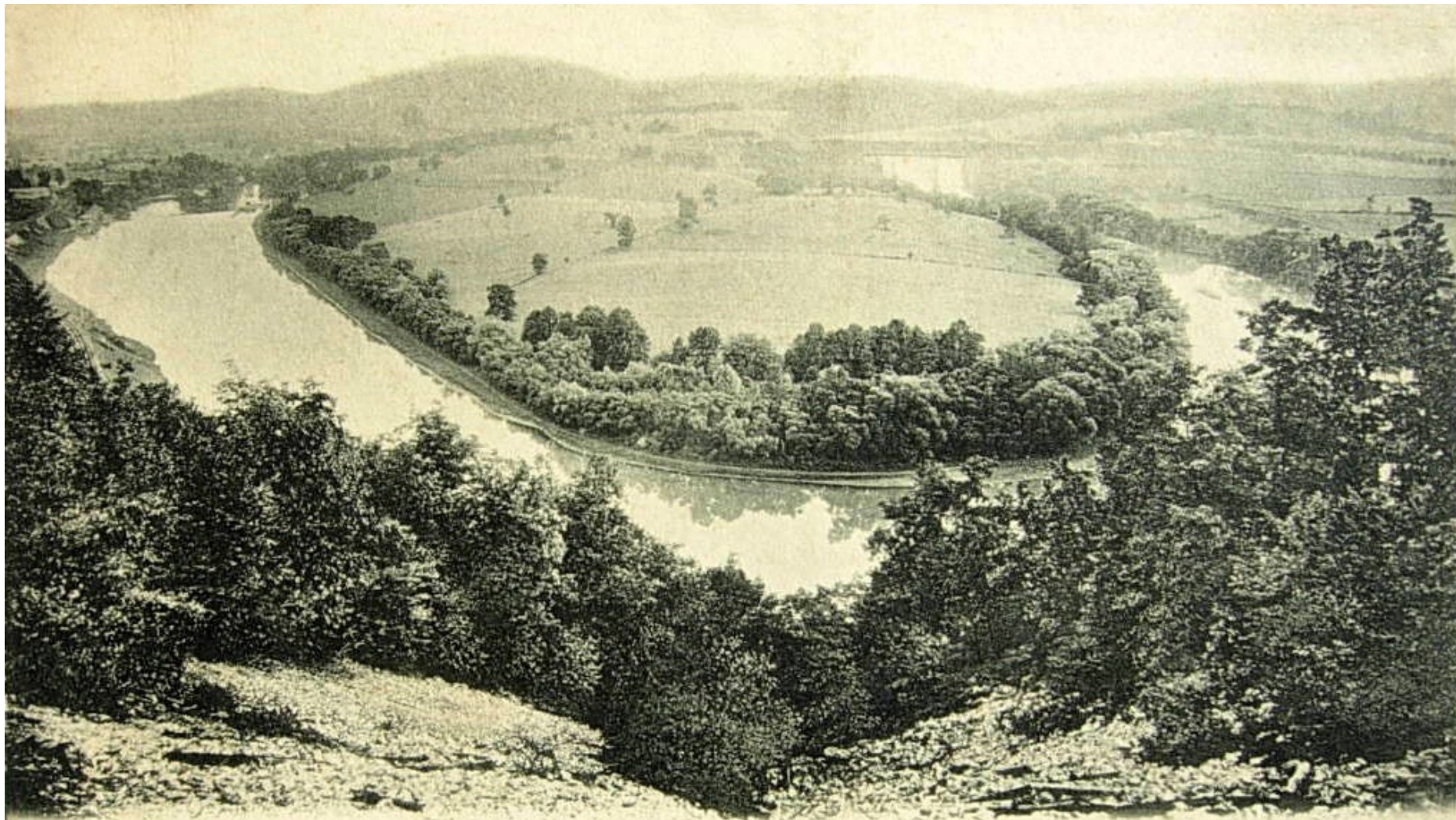




View from Neversink Mountain, Reading, Pa.





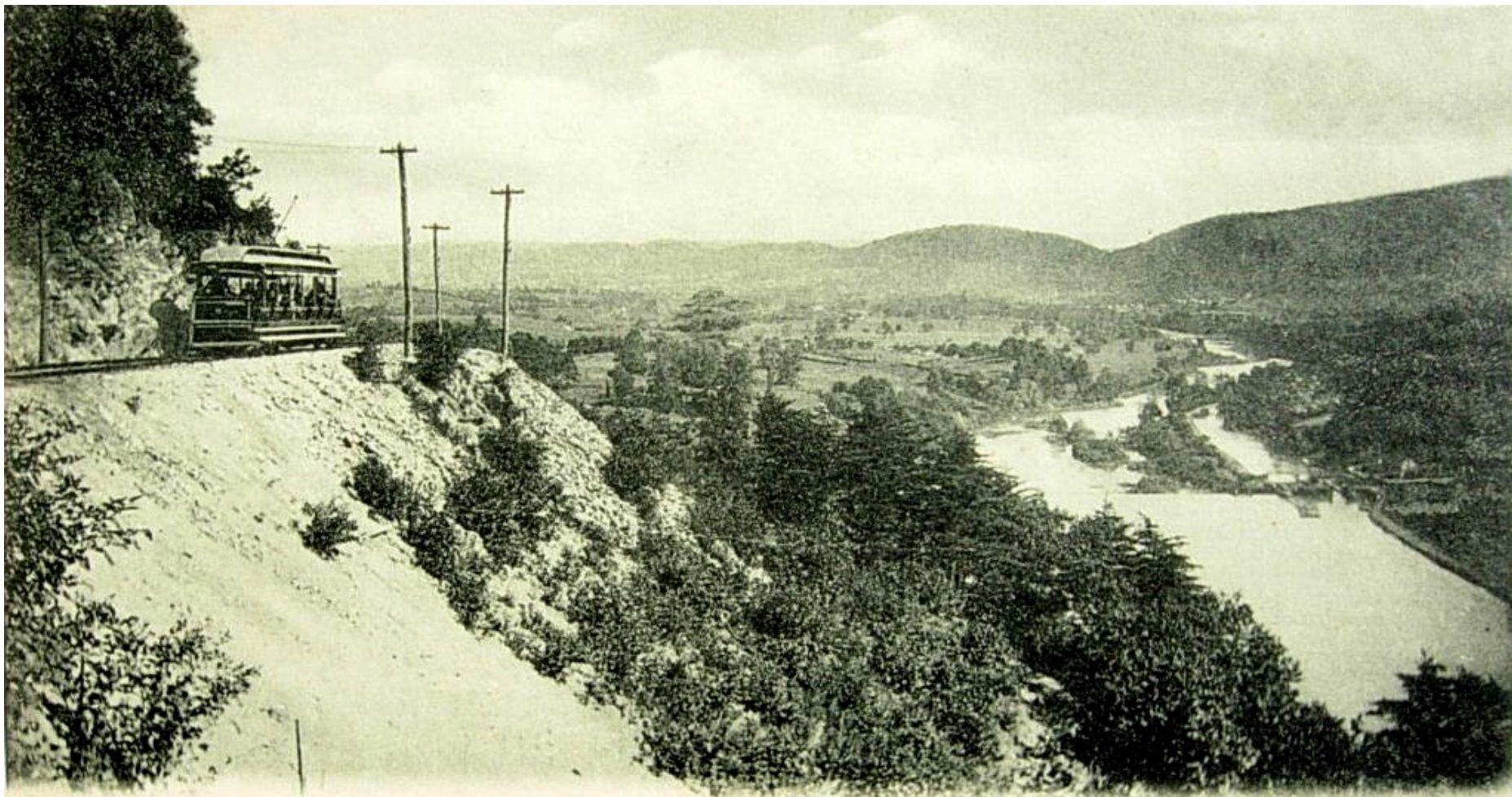


Schuylkill from Point Lookout. Reading, Pa.







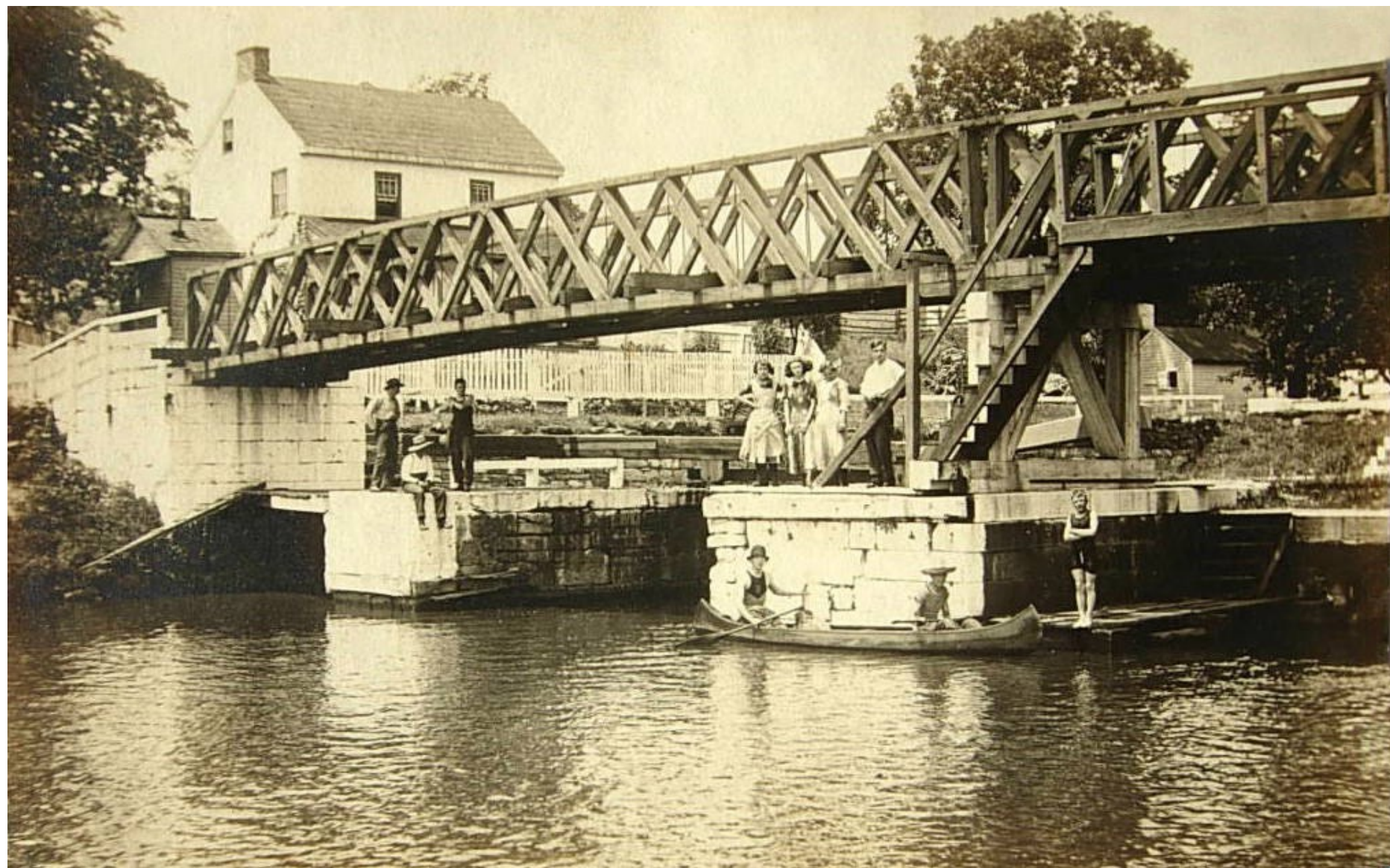


The Schuylkill Valley near Reading, Pa.

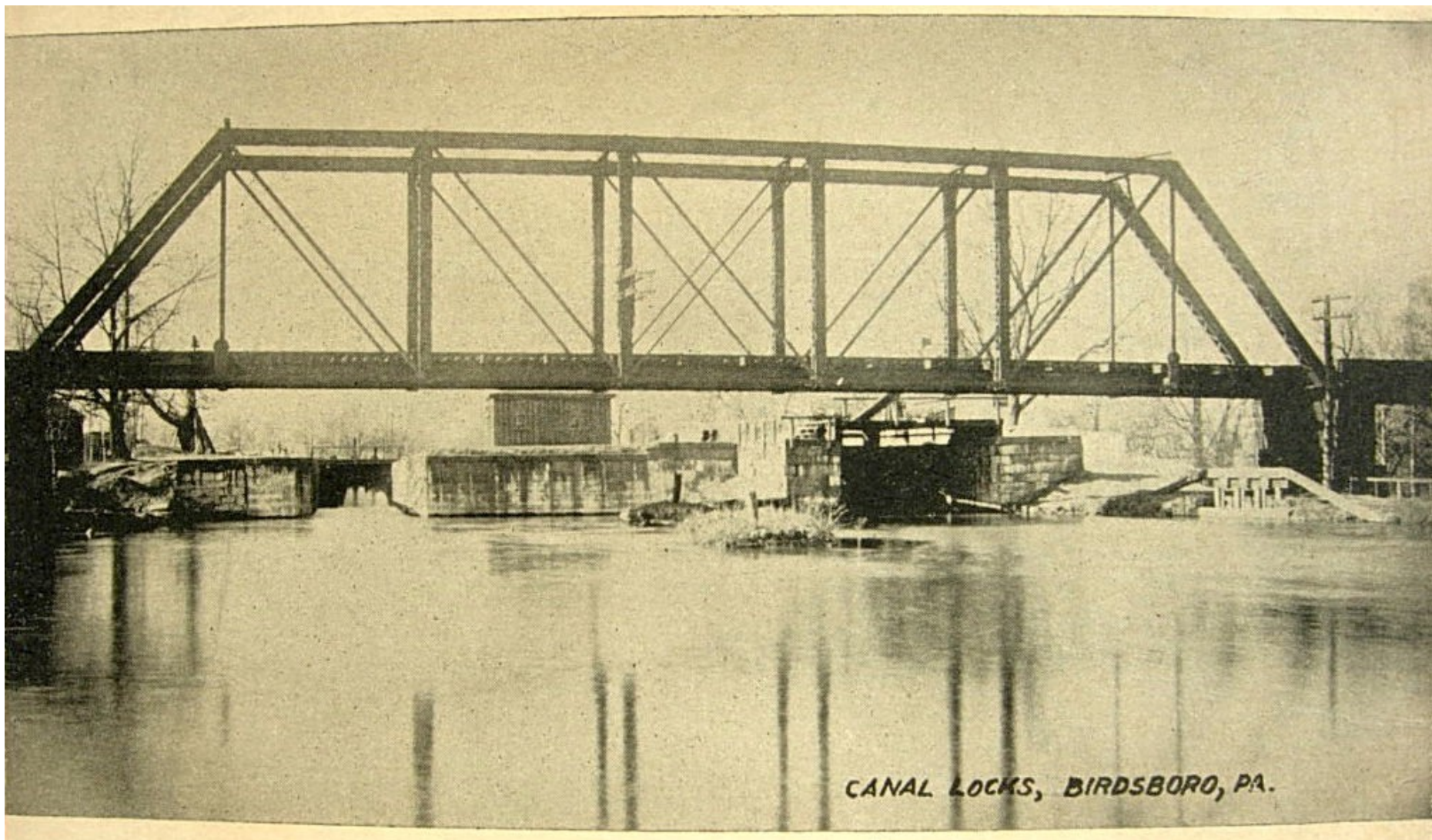












CANAL LOCKS, BIRDSBORO, PA.



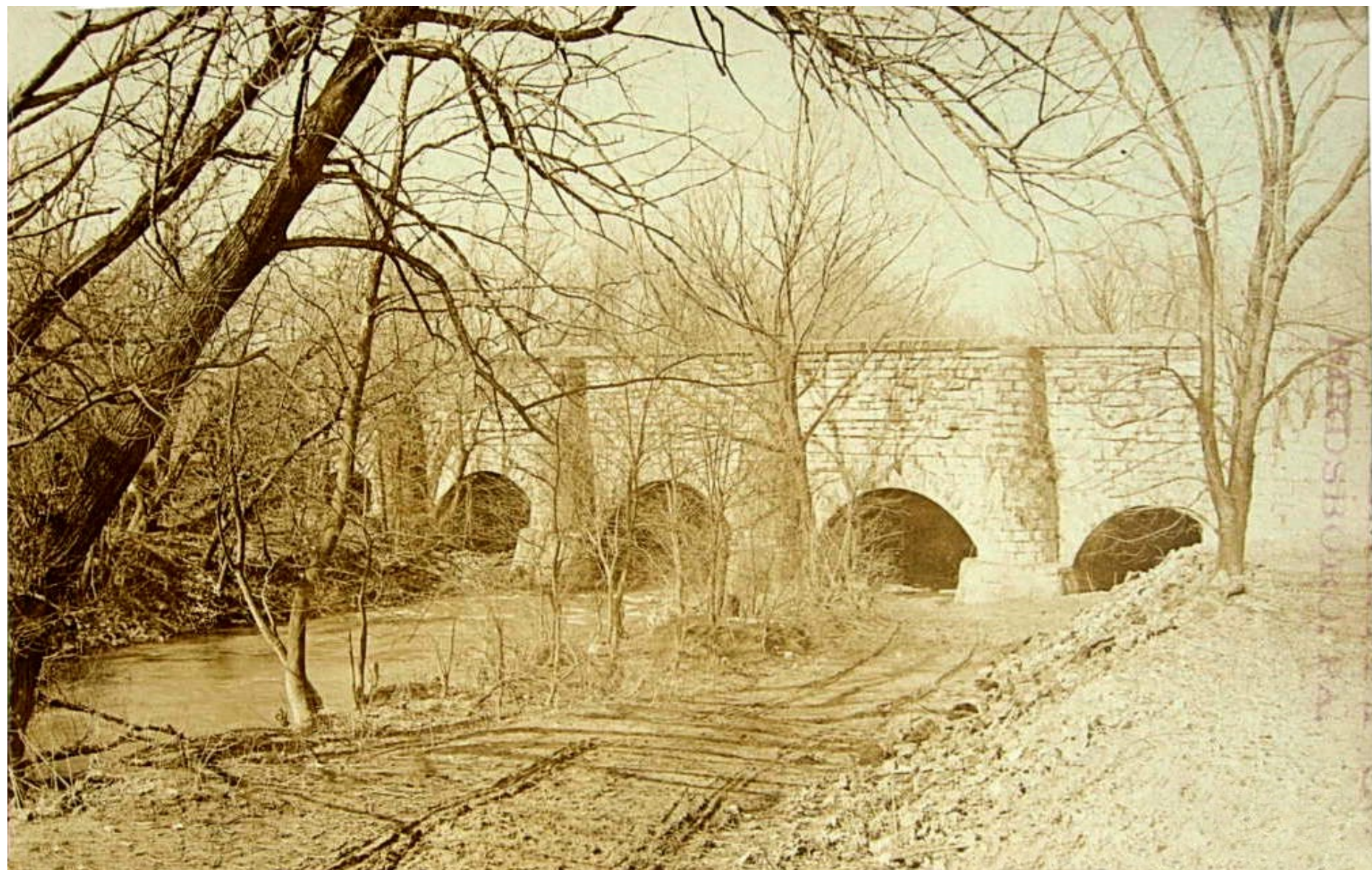






BATHING IN CANAL.  
BIRDSBORO, PA.







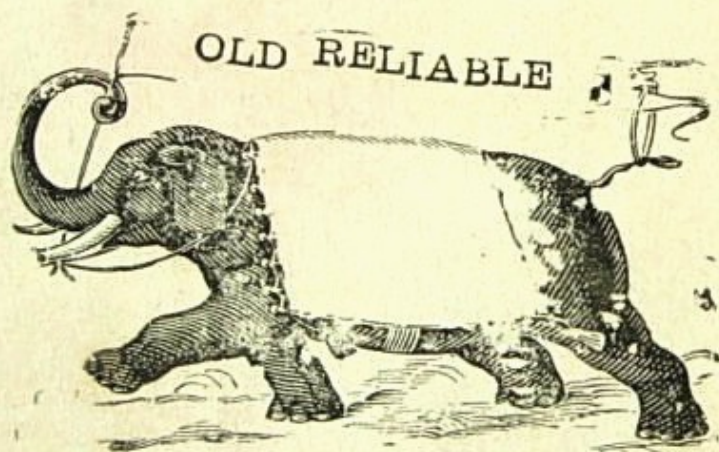
Shall the People Rule!  
SURE.

---



All Aboard

## GOING UP SALT RIVER



more years.

**Single Ticket**

First Boat Leaves Pier "23"

**Birdsboro, Pa.,**

**Saturday Nov. 14th, 1908**

Promptly at 7 o'clock p. m. in charge of Capt. William H. Taft and a Republican crew. Boat to leave every day until our erring friends are safely housed for four

**One First Class Passage**