



# The Overprint

## **Newsletter of the Reading Stamp Collectors' Club**

Editor: Stan Raugh, 4217 8<sup>th</sup> Avenue, Temple, PA 19560-1805  
Tele: 610-921-5822

### **Issue: January 2016**

**Most Meetings Held the first Tuesday of Every Month at 7:00 p.m.  
Meeting Site: Berkshire Commons, 5485 Perkiomen Avenue (Route 422)  
Turn North on Lincoln opposite of the Dairy Queen.  
Proceed 300 feet, turn left on Washington and look right of center at the stop sign.**

**Tuesday, January 5<sup>th</sup> at 7:00 p.m.**

### **“Flowers on Stamps”**

**--A Video Presentation on this Popular Topic”  
Attendees: Bring Some Examples from your collection**

**What a delightfully cheerful program for a cold January night.  
The next best thing to getting on a plane to visit in Florida!**

---

#### **First, a Giant Thank You...**

...to all those who helped with our stamp show. We had a list of all the workers in our last newsletter. Show attendance was down a bit, but overall the event was a lot of fun with good dealers and interesting material. Your editor found some great historical covers with what could be new discoveries.

At our November meeting, James Johnson was chosen for the attendance drawing of \$5.00 but was not present. In January, the prize will be \$10.00. Kent Weaver won \$21.00 in the 50/50.

**Dues are now due for 2016. Send or hand your family membership of \$10.00 to Mike Matus, 157 Lucinda Lane, Wyomissing, PA 19610. Thanks for your prompt support of our club.**

# January Meeting will Showcase Topical Collecting Advantages

**Our January meeting will highlight topical collecting by examining one subject in depth—flowers.**

Not only will we enjoy a professionally prepared DVD on the subject, but members are also invited to bring along an example of a flower on stamps.

Topical collecting is a popular approach to stamp collecting. That is one of the reasons the American Topical Association is growing in membership while many clubs are struggling to maintain memberships.

In a way, all stamp collecting is topical in your editor's opinion. If you collect the stamps of Sweden your "topic" is the stamps produced by Sweden.

It is a short hop, skip and not even a jump to collect Swedish costumes on stamps, the history of Swedish medicine or Swiss architecture, etc., etc., which is what most people think of when collecting topically.

Topical collecting should prompt just about everybody on the planet to be a philatelist.

If someone does not collect stamps, what it is that they do like?

Baking? Try stamps on bread making? A collector can include stamps on wheat and other grains, or possibly cooks or scientists related to that field. What about covers with cachets illustrating bread or bread making, recipes, famous cooks, etc.

Virtually every topic will have stamps and covers related to it—some historically interesting or valuable.

At the last stamp show your editor found a late 1800's letter (with advertising cover) promoting a new blackberry variety and offering shares to nurserymen to promote, sell, and profit in the production of this new plant. This is history, real history, possibly unknown prior to this in the mind of any plantsman—an historically valuable letter sitting in a display folder at a stamp show. Topical collecting is very educational as the philatelist learns dual skills—stamps and the topic.

---

**Remember**—every member is encourage to bring along a stamp or cover with a flower for the January meeting!

---



## ATA Resources Help Topical Collectors

As your editor sits here typing this newsletter about topical stamp collecting I have on the table next to me a very useful guide from the American Topical Association.

It is entitled "Plants" and is the first of a three-volume set on the topic, covering thousands of stamps issued on this topic worldwide until 1959. Stamps are listed by nation and cross-referenced by botanical names. The 166-page 5"x8" booklet has a reasonable \$10.00 price tag and is an example of many available guides.

**These are for ROY**



# **MIKE'S PAGE**

**MERRY CHRISTMAS  
AND  
WELCOME TO 2016**

---

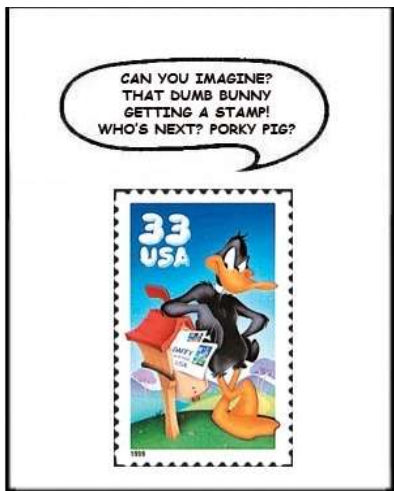
**Your club owns the following equipment**

- 12 Cut Coffee Pot
- 30 Cut Pot
- Hot Dog Roller
- Small Microwave Oven
- Color Reader
- Projector
- Projector Screen

If you want to use one or more of these you can "at no charge". If you know someone who has need of these for a function there is a nominal rental fee

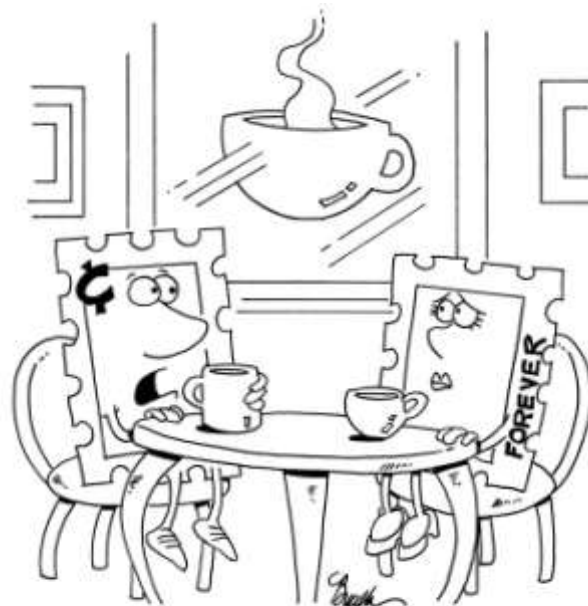
---

**IF STAMPS COULD TALK: My choice this month (courtesy of Linn's)**



**Club Competition abandoned due to lack of participation**

## **ON THE LIGHTER SIDE OF LIFE**



"I'm not afraid of commitment, but forever is a really long time."

---

### **PHILATELIC SOCIETY OF LANCASTER COUNTY**

**Wednesday, January 13<sup>th</sup>**

**WINTER AUCTION**

---

**THE MARKET PAGE**

**WILL RETURN NEXT MONTH IF WE HAVE ITEMS TO OFFER**

**..... LET ME KNOW IF YOU HAVE SOMETHING TO SELL .....**  
[\*\*mbach1@comcast.net\*\*](mailto:mbach1@comcast.net)

---