



# The Overprint

Newsletter of the Reading Stamp Collectors' Club

Stan Raugh, Editor

4217 8<sup>th</sup> Avenue, Temple, PA 19560

(610) 921-5822

Issue: April 2015

Most meetings held the first Tuesday of each month at 7:00 p.m.

Meeting site is Berkshire Commons, 5485 Perkiomen Avenue (Route 422)

Turn north on Lincoln opposite the Dairy Queen.

Proceed 300 feet, turn left on Washington and look right of center at the stop sign.

**Tuesday, April 7, 2015 at 7:00 p.m.**

**Re-scheduled by popular demand!!!**

***The Auction of the Century!***

O. K.—maybe not quite the auction of the century, but we did get your attention! Anyway, as far as we are concerned, it will be a pretty special event if we have you participate as a buyer, seller, or onlooker!

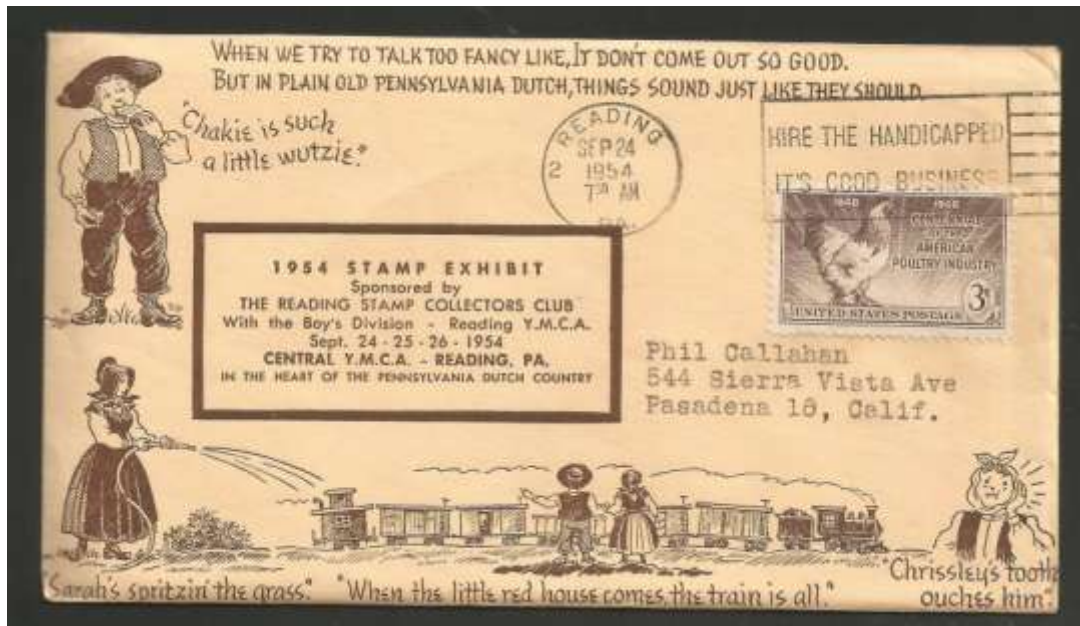
---

## **Weather or Not!**

**Well, your editor absolutely, positively refuses to jinx the club by including the weather policy. It will be a balmy 60 degrees for stamp club. Beach wear will be appropriate!**

**If all goes well...there will be a nice color image on the back page for those of you who get this newsletter by e-mail. This is a nice plus not affordable with print. Trouble is, it took your editor 45 minutes or so to engineer this and the bum doesn't know how he did it. Wish him luck in the future!**

## The Good Old Days...



ABOVE: A nice little cover from our club's past recently for sale on e-bay. This might give us an idea for a club cachet at some future time. By the way, in September this cover will be 61 years old!

### **This really has to do with stamps...**

Recently, the American Bible Society (ABS) fled New York City after 199 years of headquartering in the Big Apple. The organization, which translates and distributes the Bible, cited high living costs made it difficult for their 200-plus employees to survive on the salaries a non-profit could offer. The ABS resettled in Philadelphia.

About 15 years ago, more or less, the American Philatelic Society (APS) faced a desperate need for space at their State College, PA, head-quarters. Forced to relocate, the organization had two options: one was to move to New York City or nearby because that area is the real epicenter of philatelists in the U. S. The other choice was to buy and renovate the old Match Factory in Bellefonte, PA.

After very heated discussions and a chippy election cycle, the Match Factory was selected.

Opponents of purchasing the Match Factory predicted doom. They said the renovations would cost too much (they cost millions, which was known), the building was too big (the hope was to rent to tenants, which did happen), and no one would travel to that God-forsaken hillbilly central Pennsylvania location to visit the APS (actually, the new building was only miles from the old location, and...didn't anyone hear of nearby Penn State University?). AND...cheap living costs allowed the APS to keep staff! The Bible society story could be taken as proof that the APS was smart in staying where they were.

# MIKE'S PAGE

## READING STAMP COLLECTORS CLUB HISTORY

Thank you Stan for including a bit of our club's history in this month's Overprint.

I was thinking that we could make this a regular feature. Do you own any covers or Cinderella Stamps created for shows that you or we could scan and include in future issues. Let us (Stan Raugh or Mike Bach) know. We all might learn a little more about our own club.

## UPCOMING STAMP SHOWS

**SATURDAY APRIL 18<sup>th</sup>**

**10:am to 5:00pm**

**DELPEX 2015 STAMP SHOW &  
BOURSE**

**CELEBRATING**

**The 240<sup>th</sup> Anniversary of  
Paul Revere's Ride**

**Located at:**

**The Nur Shrine Center  
198 S. Du Pont Highway  
(US Rtes 13 and 40)  
New Castle, DELAWARE**

**PHILATELIC SOCIETY OF  
LANCASTER COUNTY**

**PRESENTS**

**LANCOPEX 2015**

**APRIL 24<sup>th</sup> and 25<sup>th</sup>**

**FARM & HOME CENTER**

**1383 ARCADIA ROAD**

**LANCASTER**

**SUPPORT OUR STAMP COLLEAGUES  
IN LANCASTER**

## **ON THE LIGHTER SIDE**

Teaching your dog to fetch can have consequences....

