

Philatelic Society of Lancaster County



The James Buchanan Chapter (#173) of the American Philatelic Society Chapter 118 of the American Topical Assn.

Meeting Begins at 7:00, Wednesday, 9 July 2014

Bluebird Commons / Woodcrest Villa. James Ziogas, Host
Doors Open at 6:30-Come Early to Buy, Sell, and/or Trade

From the Desk of the President

Summer heat is definitely upon us. Hopefully everyone is finding ways to stay cool. As for me, I've been spending a lot of hot days crawling through hot attics with my company, finding old stamps and long-ago stowed away stamp collections. It has been well worth the efforts, as every so often a "treasure" or two is found. It has broadened my interest in expanding my collecting of various forms of philatelic material. Recently, I have taken an interest in varied cancellations. And as I am sure everyone knows, there

are many very interesting cancels beyond the basic time-date cancellations. Also of interest are overprints on stamps. I've found that around the turn of the 20th century, it was common to take liberties, overprinting stamps with various messages such as companies in Great Britain printing "received" and their company name on general issues. When looking back over the many very interesting programs we have had at our meetings, there are many special interests and collections within a collection that

make our hobby not just interesting and challenging, but historically significant. Our bus trip on 23 October is still in need of a few members to sign up. If you have an opportunity, please put your name on the list as soon as possible. Also, our annual picnic is just a month away-13 August. This is always a great event with plenty of fabulous food. I hope to see you all there. In the meanwhile, I'll see many of you at our 9 July meeting. Special handling is a very interesting topic in philately. **Len**

Special Handling Stamps of 1925-59-Bob Rufe

QE1-QE4 are the four Special Handling stamps of denominations of 10¢, 15¢, 20¢, 25¢. The prefix "QE" in the Scott Number is a combination of Q for Parcel Post and E for Special Delivery. The stamps and the service that they represent were brought about to expedite shipments that were alive, such as chicks, bees, orchids, and more. While the stamps were issued from 1925-1955, they were recalled in 1959 as the new rates were higher than the highest denomination. While there are no longer Special Handling stamps, the service remains to this day. (See QE1 on page 4)

Join us for this July meeting to hear speaker Bob Rufe discuss his expertise regarding the

country's Special Handling stamps of 1925-1959.



Bob is the son and grandson of postmasters in PA, and he has been collecting U.S. stamps since childhood. Studies in Special Handling have resulted in the USSS Hopkinson Literature Award in 2007 and the same society's Hopkinson Trophy for the Best Twentieth Century Exhibit at its national show in 2010. The same exhibit, "U.S. Special Handling 1925-1959: The Stamps and the Service" has

garnered 17 Gold Medals at WSP national shows, and it won Grand Awards at the 2013 PSNE and 2014 NO-JEX shows. Bob has been president of the Brandywine Valley Stamp Club since 2007, and he is an APS Tiffany Donor and a member of the USSS "Ugly Shirts!"



Hear Bob's story about these fascinating issues. If available, meet early with him at the Olive Garden at 4:15

Volume 77, No. 7

July, 2014

Highlights

- Special Handling
- Ugly Shirts
- The 1¢ Magenta
- Irwin Weinberg
- NJ Express
- APS Perfins
- August Picnic
- Building a collection

VISITORS ARE ALWAYS WELCOME

PSLC Meets the 2nd Wednesday of the month (except August) at The Bluebird Commons in Woodcrest Villa, 2001 Harrisburg Ave, Lancaster, PA 17601 at 7:00 PM. Dues are \$10.00. For club info, call Lucy Eyster: 717.735-2586

Website: lcps-stamps.net

President & Publicity:

Len Kasper, 717.723.1864
hotrodparts33@aol.com

Vice President:

Bill Greiner III,
sunfighter@verizon.net

Past President:

Robert D. Noble,
rdnoble@windstream.net

Secretary:

Joy Bouchard,
jib672@yahoo.com

Treasurer:

Lou DiFelice,
loudifelice@gmail.com

Membership & ATA Representative :

Lucy Eyster,
lucyeyster@yahoo.com

Newsletter Editor, Programs, & APS Rep:

Paul Petersen, 717.299.5640
pcpetersen@comcast.net



NJ Express

Several years ago, club member Dennis Shumaker purchased a mint cut square of the New Jersey Express Company local for around \$30. It was sold as a wrapper, and it was unlisted in *Scott's*. Quite recently he contacted Jean Walton, the secretary of the NJ Postal History Society who sent him some reference information. Bruce Mosher had written a series of articles about express companies in NJ, and these have been compiled on a modestly priced CD.

After reviewing the research, it turns out that what Dennis has is an S. Allen Taylor forgery of the 1863 NJ Express issue. This company was owned by Adams Express which is listed in *Scott's*, but the NJ Express stamp is not. The reference material had no information about the value.



What alerted Dennis to the forgery status of his 1863 holding is that in the outer white oval frame is a series of dashed lines. The second red flag is a period after the word "Co-."

One clue to forgeries of older locals is the mint and gum status of the item. Few reprints or forgeries were cancelled according to JD Bowman, and there is good probability that a cancellation on a mint issue is fake. A genuine cancellation is a better indicator that the item is genuine.

For a fascinating history, do a search on "S. Allen Taylor forgeries" to see his influence on many of the rarer philatelic items that he "worked" on in the 1860s and beyond.

Philatelic Society of Lancaster County

June Minutes and Treasury Joy Bouchard and Lou DiFelice

Opening: Len Kasper started the meeting at 7:00 p.m.

Presentation: The Rogue River Mail Boat. This was a multi-media program by Bob and Barb Brown, both retired school teachers and stamp dealers.

Business Meeting

Membership: Lucy Eyster introduced two guests, Leroy Funk and DB Sargent. Attendance at tonight's club meeting was 42.

May Meeting Minutes: These were approved unanimously by voice vote.

Drawings: These were won by Bill Greiner and Fred Sargent.

Dinner with the Speakers: Paul Petersen announced that there were seven club members at the dinner with the Browns tonight. He passed around a sign-up for dinner with July speaker, Bob Rufe.

Picnic: Paul passed around a sign-up sheet for the 13 August picnic to bring a starter, snack, salad, side dish, or dessert.

Meeting Programs: Paul solicited speakers for 2015, and David Hunt and Dick Colberg volunteered. Dick Shaefer recommended changing the May PSLC auction to June to allow for some separation from Lancopex. Membership supported this, and Paul will revise and update the 2015 meeting schedule. Other auction date changes will be addressed in the future as needed.

Bus Trip: Mike Back updated the club. The bus holds 52 people, and we have 37 to date. The Trip Committee does not anticipate any problem filling the bus, so seating priority will be given to those who submit the \$60 cost on a check made out to the Reading Stamp Collector's Club. The last day of payment is 13 August, the night of the club picnic. Checks may be sent to Roy K. Bardsen, 379 Sioux Court, Sinking Spring, PA 19608. The trip will be 23 October to the ASDA show in New York City. Details are in the June *PSLC Newsletter*.

Misc: Dick Colberg said that

the NAPEX show was very crowded with lots of buying. He also has a 7 volume set of '13 *Scott Catalogues* (Includes the *U.S. Specialized Catalogue*). Len Kasper has an estate sale which include some philatelic items in Columbia on Thursday, 12 June.

Lancopex Follow-Up: Len reported on the 12 May meeting of the show committee officers and announced that the next will be held on 17 November at Lucy's apartment.

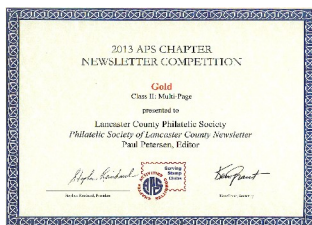
First Day Ceremony: Lucy reported her attendance at the crowded First Day Ceremony for the latest hot rods stamp issue held at the York Fair Grounds a few weeks ago. There were many souvenirs available for collectors. She met PMG Patrick Donahoe who at one time was the PM of Lancaster, PA.

Treasury Report

Opening: \$4,686.03 (1 May)
Income: \$420.00
Expenses: \$570.40
Closing: \$4,535.63 (31 May)
3-CDs valued at \$6,888.71

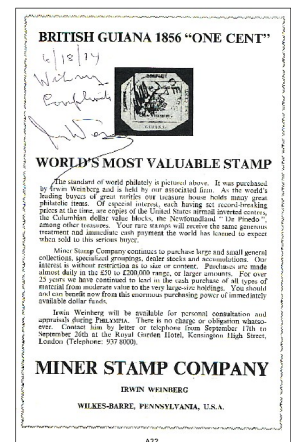
PSLC Wins Gold

The *PSLC Newsletter* won a Gold Award in the 2013 APS Chapter Newsletter Competition for the Multi-Page Division. This is the third gold award in three years. Congrats to the many hands involved.



Summer Picnic

- Wednesday, 13 August '14
- 6:00 PM
- Millersville Memorial Park
- Sign up tonight. Here you can identify what you will bring, as sides, desserts, and snacks are needed.
- If you will not be at the July meeting and desire to attend the picnic, please call Paul (717.299.5640) to get on the list and sign up for food.



Recent Irwin Weinberg autograph collected on one of his ads in the '70 U.K Int'l Expo Catalog promoting his British Guiana 1c Magenta.



Forming a Great Collection: *Recommendations From an Expert*

If you are starting out as a new collector or if you are a more mature one with a new interest, there are recommended guidelines to follow. These are adapted from Bubba Bland, the President of the Mexico Collector's Society (MESPI) and were forwarded to PSLC by PSLC member Dick Colberg.

1. Know what you are collecting. This includes the substance on the issues, their history, variations, and more. From this you can form a plan.

2. Form a solid reference library. This material will help you formulate your plan as you learn about the items you have and the ones you are acquiring.

3. Start out slowly and carefully. Don't throw money at everything you come across. Instead, be discriminating in your purchases.

4. Focus on quality. This does not mean everything has to be graded at 95, as some of the classic issues (i.e. the Black Jacks) are rarely found in good condition as to centering and paper quality. Use your reference library as your guide.

5. Build a collection from top down instead of bottom up. It is often more difficult to find the rarer stamps, so get them when the opportunity arises. The more common items are almost always available.

6. Respect your budget. It is important to balance this recommendation with # 5 above. You have to keep budget and price in perspective while not letting a hot item get away. That once-in-a-lifetime item that comes your way may be your only purchase for the philatelic fiscal year.

7. Check lots for bargains. Check lots you are considering for the harder to find items that have been overlooked by a seller or other buyers.

8. Keep an eye on the marketplace. Browse auction catalogs, sales listings, internet auctions, dealer bourses, and more. Don't miss a good opportunity by being unaware of availability or by waiting a little too long.

9. Deal with people you trust. Do your research here to avoid "buyers regret." Be careful when buying "As Is" material that is not returnable.

10. Build a collection on a topic you like and one where you will have a good chance of finding/obtaining the material that you are looking for. Enjoy your new collection.

Add an APS Perfin to Your Collection

Many collectors are familiar with "Perfins" or stamps with holes punched in the design. Perfins is an acronym for perforated initials. Gene Stutzenstein gave an informative presentation at APS Summer Session '14.



In mid-19th Century Great Britain, there were security concerns of reuse and theft of stamps in private industry and governmental agencies. The practice of perforating checks and bonds for security reasons had been in place, so

in 1868, the British began to perforate their stamps.

The Sloper Company perforated stamps to order for governmental and private companies. It became so popular that Sloper switched its mission from custom perforating to making and marketing the machines to companies given authorization to perf.

This was widely popular in the UK with over 7K different perforations in Scott 33 alone. This small country peaked with nearly 23K organizations perforating their stamps.

Perforating stamps came to the U.S. in 1908 beginning with the 1902 definitive series, and it reached 6.4K different companies. Germany had 12K.

Collecting perfins is highly variable allowing country collections and accumulation of varieties such as misperfs, inverts, off-centers double or multiple perfs, and many more. Stamps are displayed from the back on a black background to feature the perfin. (Example on left.)

For a collector of APS ephemera, one of their perfins makes a nice addition.

There are catalogs for many countries along with album pages. But the latter are easily made on the computer. Gene has made his Power-Point available to PSLC for a rainy day program, and he recommends the website www.perfins.com for further information on these stamps.

PSLC Programs and Stamp Shows

2014 Programs

9 July: The U.S. Special Handling Stamps of 1925-1955. Bob Rufe. James Ziogas, Host

13 August: Club Picnic (6:00)

10 September: Fall Auction. Lucy Eyster, Host

8 October: Great Britain Inland Airmail Service: 1935-1937. Mike Bach. Fred Sargent and Fred Mackey, Hosts

12 November: Open House, One-Page Exhibits, and Your Best Stuff Extravaganza. Len Kasper. Bob Paire, Host

10 December: Dinner

2015 Programs

14 January: Winter Auction. Bill Greiner, Host

11 February: APS Video-*The doctoring of postage stamps: Philatelists beware.* GS Joseph

11 March: 1.) Local Stamps of Rattlesnake Island, Bill Schultz. 2.) Lancopex Advert Card Prep. All hands

8 April: A survey of Confederate Postal History. Patricia Kaufman

13 May: The U.S. International Shows: Stamps, Covers, Labels, and History. Paul Petersen

10 June: PSLC Spring Auction

8 July: Express Companies of Mexico between 1855-1907. Dick Colberg

12 August: Picnic

9 September: PSLC Auction

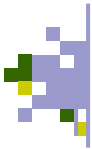
14 Oct or 11 Nov: Great Britain's Line Engraved Stamps. David Hunt

9 December: Dinner

2014 Related Shows

Some Sundays Stamp Bourse: Farm & Home Center, Lancaster. 17 Aug., 5 Oct., 7 December. Kevin Kellman (K²), Manager, 301-371-4558

American Philatelic Society: APS Stamp Show, Hartford, CT, 21-24 August, 2014



Musings: August-2014

APS, the 1¢ Magenta Auction, and Irwin Weinberg

Much of the philatelic news last month was the 17 June Sotheby's auction of the British Guiana 1¢ Magenta from the John DuPont Estate. This is called the world's rarest and most famous postage stamp. Purchased by DuPont in 1980, it was last on public view in 1987 and has remained securely in the vault. It was recently taken out for a short display followed by the recommended expertizing prior to the sale.



During the auction, I was attending APS Summer Session, and a contest was held to see who got the closest to the hammer price of the 1¢ Magenta. The realization, before the buyer's premium was \$7.9M, and my second place guestimate was \$8.5M. The pre-sale estimate offered by the auction house was a number between \$10-20M, one that was a little high as it turned out.

Coincidentally, the auction for the summer session participants was held at the same time as that of the 1¢ Magenta, 7:00 p.m., Tuesday the 17th. Irv Miller was the auctioneer for our event, and he and the APS staff set up a live feed from Sotheby's to witness the auction. It was to be run from Irv's computer to the big screen for about 100 of us in attendance. But there were technical glitches! What I remember most was Irv warning us: "Please don't anyone touch the send button while the bidding is going on."

A highlight of the Summer Session was meeting Mr. Irwin Weinberg who was one of the owners of the 1¢ Magenta from 1970-1980. Now 87 Weinberg has a passel of philatelic stories to tell. He is pictured below at the airport in a 1970s snap while transporting the 1¢ Magenta for display. He has armed security, and a briefcase holding the stamp was handcuffed to his wrist. (↓)



From the Wilkes-Barre Scranton (PA) area, Weinberg said that

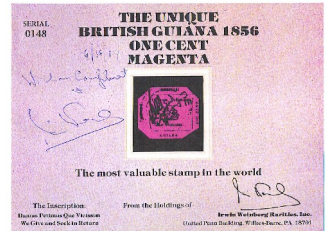
right after high school he went directly to New York City and Nassau Street to make his fortune. And this he did indeed. In NY he would meet and deal with well known dealers such as the Weill brothers, John Keller, Robert Siegel, and many others.

Weinberg and his several business associates purchased the stamp in 1970 for \$280K. Their investment was not a sentimental one. Interests rates were good, but many predicted an inflationary period later in the decade. Their plan was to hold the stamp until inflation peaked.

What got Weinberg interested in the 1¢ Magenta was viewing it at the British Pavilion at the 1939 NY World's Fair at age 12. Unlike the most recent owner, they put it on display all around the world including such cities as London, Paris, New Delhi, Tokyo, NY, Philadelphia, and others. He added that Tokyo was particularly desirous to display this stamp and offered to give it the same quantity and quality of publicity as they had for their the recent exhibition of the Mona Lisa. He wondered whether people would stand on line today and pay a small fee to see this stamp, as it is such a different world than it was back in the 1970s.

Their prediction was correct,

and by the late 1970s there was double-digit inflation prompting them to sell in 1980. The final price with buyer's premium was \$935K. He concluded that he would rather be born lucky than born clever.



For the 17 June auction, Mr. Weinberg was an invited guest of honor. There was a pre-auction cocktail party where he ran into many old friends and customers among the many other dealers, owners, and auctioneers. It opened at \$4.25M and moved slowly with floor bids, finally to sell with a phone bid of \$7.9M by an anonymous bidder. While the winner wishes anonymity, several at APS think they know who the owner might be, and if correct, this stamp will be exhibited often. Weinberg thought that a pre-sales estimate of \$10-20 was way too high and that they should have taken the safer route at say \$3.5M where everyone would be thrilled with the 7.9M realized price. Ed ☑



Philatelic Society of Lancaster County
PO Box 6053
Lancaster, PA 17607-6053

This document was created with Win2PDF available at <http://www.win2pdf.com>.
The unregistered version of Win2PDF is for evaluation or non-commercial use only.
This page will not be added after purchasing Win2PDF.