

Philatelic Society of Lancaster County



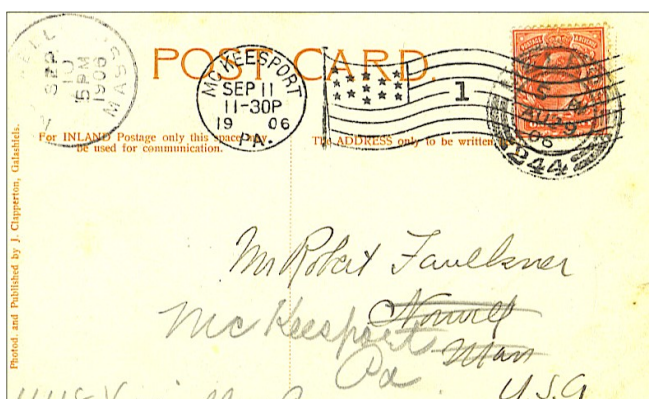
The James Buchanan Chapter (#173) of the
American Philatelic Society
Chapter 118 of the American Topical Assn.

Meeting Begins at 7:00, Wednesday, 13 November '13

Bluebird Commons / Woodcrest Villa. Wm. P. Snyder, Host

Doors Open at 6:30. Come Early to Buy, Sell, Give, and/or Trade

Reading a Cover (or postcard, in this case)



Take a look at the above postcard (PC). What does it tell you? It is a picture postcard with Sir Walter Scott's tomb in Dryburgh Abbey on the front. The message states "Our last day in Scotland, August 29th". One additional clarification. The computer/scanner would not

include the very bottom of the card, but this includes the forwarding street address of 1418 Versailles Ave.

At first glance it seems like a British stamp (Scott #128) went through the USPOD. A closer look reveals that it's double postmarked. Why?

The card was dated 29 August, and the round British postmark is dated the same. It is from the Melrose post office. The Apple map program lists a Melrose in Scotland, but there is no other Melrose in the UK. From Melrose it went to Norwell, MA as addressed. This is seen on a receiving mark in the upper left. The date is 10 September 1906.

At Norwell, MA the PC was forwarded to the recipient, Robert Faulkner in McKeesport, PA. Here it was cancelled again on 11 September 1906 with the U.S. flag and date cancel device! There was no forwarding fee assessed.

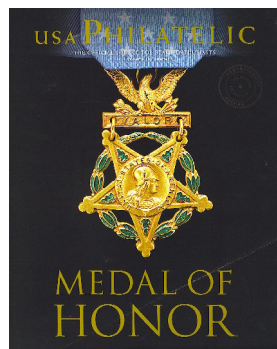
One-Page Exhibit Night

Yes, the time has come. No more harassment, goading, or strong-armed tactics. Tonight is the night. We won't know how many entrants there will be until all is in place, but many hands went up when surveyed over the past several months.

The first entrant is Chuck Kilgore's page on Cape Hatteras Light (NC) as seen on stamp, first day cover, and beverage label. He submitted it early in case he is out of town. Communicating from France, Dick Colberg in-

tends to enter a page or two. Some PSLC members have added that they have had fun working on their pages.

The format will be loose. There will be a sign-in to record exhibitors and their titles, just for the record. Exhibits will be placed on the wall for general viewing. After the business meeting, exhibitors will have the opportunity to talk about their pages in small groups and describe what contributed to their inspiration and the actions taken to produce it.



In honor of Veteran's Day-2014, USPS is issuing stamps on 11 November to commemorate the Medal of Honor recipients. This free semi-monthly publication is by request over the phone. Just call: 1.800.782.6724

Volume 76, No. 11

November, 2013

Highlights

- Medal of Honor
- One-Page Exhibits
- Read a Postcard
- UK to Normandy
- The Browns Retire
- Snaps From Reading
- '14 Dues, Dues, Dues
- *Ave et Vale*
- Hosts & Presenters
- Musings: The rest of the story

VISITORS ARE ALWAYS WELCOME

PSLC Meets the 2nd Wednesday of the month (except August) at The Bluebird Commons in Woodcrest Villa, 2001 Harrisburg Ave, Lancaster, PA 17601 at 7:00 PM. Dues are \$10.00. For club info, call Lucy Eyster: 717.735-2586

Website: lcps-stamps.net

President:

Robert D. Noble,
rdnoble@windstream.net

Vice President:

Len Kasper,
hotrodparts33@aol.com

Secretary:

Joy Bouchard,
jib672@yahoo.com

Treasurer:

Lou DiFelice,
loudfelice@gmail.com

Membership, Publicity, & ATA Rep:

Lucy Eyster,
lucyeyster@yahoo.com

Newsletter Editor, Programs, & APS Rep:

Paul Petersen, 717.299.5640
pcpetersen@comcast.net



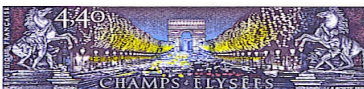
Both Sides of the Channel

The United Kingdom is the latest European state about to go private according to a Peter Evans piece in the 13 September *NY Times* (pg. B6) as submitted to this newsletter by PSLC member Bill Snyder.



Royal Mail (RM) has had significant financial losses in five of the last twelve years. Mail dropped from 84M pieces daily in 2008 to just 58M now. Fifty thousand jobs have been eliminated. The loss is blamed in part on the internet and email.

A majority stake in the state-owned business will soon go on the market to help cut RM's budget deficit.



While in RF, Dick Colberg wrote that he attended the large stamp show in Ouistreham, Normandy. While exhibits at this show were not judged, Dick entered his Baltimore locals and received good feedback. The show attracted plenty of visitors, exhibits, and vendors. As impressive was the breakdown of the exhibit frames. Dick offered to help, and he was joined by 25 others from the local stamp club to disassemble and pack-up in no time. Then they were then treated to champagne, sandwiches, coffee, and Coke.

Given the town's historical location, the show is coupled with a tour of the Normandy Beaches of WWII. Its lighthouse sits right atop Sword Beach. The tour then headed to Caen to see Pegasus Bridge as secured by the RF resistance early on 6 June.

September Minutes and Treasury

Joy Bouchard and Lou DiFelice

Opening: RD Noble opened the meeting at 7:05 p.m.

September Minutes: The minutes and treasurer's reports were approved by voice vote.

Membership: Lucy announced that there were three new members last month. Visiting tonight was Joanne, a friend of Bettina Heffner. There were 32 in attendance.

APS Drawing: Lou DiFelice announced that the club is still sponsoring a drawing for a year's free dues to APA. Please see him if you would like to enter the drawing.

Reading Show: Lou also encouraged club members to attend and support the Reading show on 2 November. Directions were provided.

APS Award: APS representative Paul Petersen presented a certificate of award to Lucy Eyster. As stated in the September *PSLC Newsletter*, Lucy was a 2013 recipient of the Nicholas Carder Volunteer Recognition Award for Local/Promotional Service. This award was announced at the APS Stamp Show in Milwaukee in August.

NPM Trip: Roy Baardsen provided a quick overview of the success of the NPM visit

and tour last month. Everything was positive. Mike Bach followed-up with thank-you letters to the three officials of the NPM and to Congressman Joe Pitts who arranged the special tours.

One-Page Exhibits: Paul described the plan of the One-Page exhibit session scheduled for the November meeting. A good show of hands indicated an array of participants. He fielded questions.

Snowflakes/Free Linn's: Paul identified a stack of recent *Linn's* donated by Bob Larkin (along with free loose-leaf binders). Further, Bob has ordered a big roll of the snowflake definitives and will offer them to members at face value for their U.S. collections.

Monthly Drawing: Packets of topical stamps were won by Dennis Shumaker and Paul Petersen.

USPS Surprise: Fred Sargent read in the 6 October *New York Times* that the recent Jenny inverts were packaged securely because 100 of these souvenir sheets purposefully contain non-inverted Jennies. As a surprise for collectors, these will be somewhat of a rarity. They were distributed randomly among the 50 states.

Dinner: Lucy announced that plans are in place for the 11 December Christmas dinner at 6:00 p.m. in the Garden Café. A sign-up was circulated. She solicited input for the menu choices and added that the 75th Anniversary Committee will provide the entertainment. The cost is \$8.00 per person at the door. There will be two gift drawings, one for philatelic items (\$8.00 value) and another for non-philatelic items. Members, spouses, and friends can participate in either or both of these gift exchanges.

2014 Club Officers: There was an appeal from officers RD Noble, Len Kasper, and Lou DiFelice for nominations (either self or nominations from the floor) for the position of VP to take office in January 2014..

Presentation: Dave Hunt gave a PowerPoint presentation on the topic of Stained Glass on Stamps including philatelic items and images of the original glass itself.

Treasury Report

Opening: \$3,941.56 (1 Sep)

Income: \$100

Expenses: \$37.00

Closing: \$4,004.50 (30 Sep)

3-CDs valued at \$6,861.88



Ave Et Vale

Former PSLC member and stamp dealer Richard Bishop passed away at 94 on 18 Oct. 2013 at the Masonic Home in Elizabethtown. After retirement as a UCC pastor in York, he and his wife traveled, and he rekindled his collecting efforts toward stamps and covers, coins, postcards, and other collectible items.



It did not take Mystic long to offer to buy our non-inverted Jennies.

Sign-Ups

There will be a sign-up sheet for meeting hosts for 2014. Also needed are presentations for June and November. Please think about volunteering to help your club in one or both ways. Finally, Lancopex will be here soon, so participation in planning this stamp show will be important as time draws nigh.



Reading Stamp Show Draws a Crowd

The Reading and Lancaster Stamp Clubs have a special relationship, more of a kinship if you want to be honest. When you attend an event of one club, you are likely to see members of the other. This is most apparent for the bus trips and the Lancaster show in April and the Reading show in November. According to the Reading co-chairmen, Roy Baardsen and Mike Matus, this year's number of attendees may be even better than last year. They'll know for sure when they compare with last year's records.

Food, as always was excellent with homemade corn chowder, Italian wedding soup, vegetable beef soup, cookies, pies, and other delectables. Ed's favorite was the combo cheeseburger shaped like a hotdog which is cooked on the hotdog grill and served on a bun.



Fred Mackey (L) and PSLC President, RD Noble



Around the table (L→R): Dennis Shumaker, Lou DiFelice, Scott Kennedy, and Carmine Spadaro. Standing in kitchen (L→R): Barbara Spadaro, Sandy Baney, Chrissy Nieves,

The Browns Retire

Many customers to regional shows were sad to see Bob and Barb Brown's final show at Reading on the 2nd. After retiring from teaching in 1992, they started the business, and it grew to the point where they logged 43 show days on the road in one year alone.

They are not quitting completely, as they have a transition plan to inventory their holdings and move some of the material to fellow dealers, loyal customers, and auctions. They will continue their membership and participation in three area stamp clubs.



It's not just the business that will be missed. Bob and Barb have been wonderful hosts for many years with stamp club events at their home. To make these events more festive, they purchased and set up the old Lititz post office in their home.

Club Notes

Programs & Shows

2013 Programs and Hosts

13 November: One-Page Exhibits. All PSLC members are invited to participate with one or more exhibit pages. Bill Snyder, Host

11 December: 75th Anniversary Celebration-6 pm (Note early starting time.)

2014 Programs

8 January: Club Auction. Len Kasper, Host

12 February: APS Video: Canal Zone Gems

12 March: The Westtown Locals. Bill Schultz

9 April: 1.) The Patriot Postal Cards of the 1970-1980s. John Brownell. 2.) Lancopex advert card preparation for show

14 May: Spring Auction

11 June: TBA

9 July: U.S. International Philatelic Expo Stamps, Covers, Labels & More, Paul Petersen

13 August: Club Family Picnic

10 September: Fall Auction

08 October: Great Britain Inland Air-mail Service: 1935-1937. Mike Bach

12 November: TBA

10 December: Dinner

2013-14 Local Shows

Some Sundays Stamp Bourse: Farm & Home Center, Lanc. 1 Dec 2013, 16 Feb 2014, 22 June, 17 Aug, 5 Oct, 7 Dec. Kevin Kellman (K²), Manager; 301-371-4558.

Happy Thanksgiving

In everything let us give thanks...



✂.....

Date: _____

Please clip this notice, complete it, and turn in with \$10 to Lucy Eyster at the November club meeting. You may also mail it to Lucy at 2001 Harrisburg Pk, B503, Lancaster, PA 17601

Name: _____ Phone: _____

Email Address: _____ APS Member ☐ ATA Member ☐

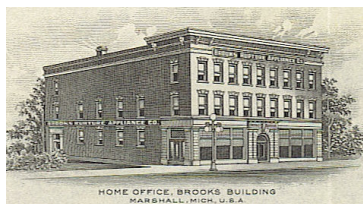
Please check the APS/ATA box (s) above if you are a paid-up member in good standing.



Musings: November-2013

The rest of the story, well mostly...

In the August 2010 issue of this newsletter, I wrote about a handful of covers that I picked up at the 10¢ table during the APS Summer Session. They were all related business return envelopes to the Manager of the Brooks Rupture Appliance Co. of Marshall, MI. It was the unusual cover markings and contents that interested me. The postmarks in my sample ranged in date from 1911 to 1953. All 21 covers contained one or more documents. There were many more of these covers left over on the table that I did not purchase.



Once in my den I began to look through the covers in earnest, and realized that these items represented the client files, the data of those who purchased the appliances from the Brooks Co. Each envelope was the equivalent of a business file folder with the customer purchasing info.

The rubber "TEST" stamp on the cover was nothing philatelic, merely an indication that a testimonial of the product was contained within. Other markings included dates of order(s), sizes, re-orders, and a linear customer number. I had no way of knowing how these were filed whether by number, name, or what-

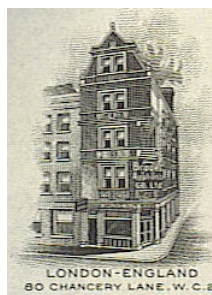
ever. In the newsletter article I included some vignettes of the testimonials, some very poignant in how they helped the child and adult customers take control of their lives. One conclusion was that every testimony regarding the product was positive.

But let's move on. While seeking some items for my World's Fair collection at Balpex in August, I came across a bunch of Brooks covers in the expo box at Jim Smith's table. They are recognizable. He deals largely in naval covers and cancellations. Here I found a cancel of the Texas 1936 Centennial Expo, my first. But what else did I find? On the letterhead were images that I had not seen of Brook's Michigan facility along with others in London and Amsterdam.

There were about twenty other Brooks Co. covers, all with expo cancels starting with the 1907 Jamestown Expo. I thought I would educate the dealer about these covers since I was the new and self-proclaimed expert. He then filled me in with the rest.

Jim related that about three years ago he made an unusual purchase from an antique dealer who had a barn full of Brooks covers for sale. When he arrived, there were over 70 USPOD two-foot mail trays with protective cardboard sleeves. According to my USPS

contact, Dennis, a mail tray can hold up to 500 thin covers. Since some of the covers contained more than one document, let's assume 450 covers per tray. This comes out to 31,500 covers in the lot. The price was right, so Jim bought it all-truckloads of these covers. Fortunately, the sale was close to his business.



Wanting to know more, I did a brief internet search and found testimonies from the early third of the last century. These were in such publications as the *NY Times* and *Farm Journal*, to the *Int'l Socialist Review*. There appeared to be a worldwide distribution early on. Extant are several editions (1912, 1932, 1935+) of a 24 page book published by the Brooks Co. These are now on sale ranging from \$3-\$15.00 from many of the online book vendors.

The closest to a company history was from the obituary of Lawrence Brooks (1936-2011)

who took over the company from his grandfather (Harold) in the mid 1970s. At age 61 he sold the building to a hospital in Marshall in 1997 and closed the business around 2000.

So what did stamp dealer Jim Smith do with all these covers three years ago? Postmarks ranged from the turn of the century through the 1960s. It took Jim a summer to find the cancels he wished. He sold large lots to other dealers., One dealer specifically requested all the covers from the 1920s.

It seems that the dealer who purchased the 1920s lot bought them for the Washington-Franklins. He perfed each one and came up with a near gem. Jim did not recall which stamp it was, but the dealer sold it for about \$7K, and just recently it auctioned for about \$41K!



The Brooks Co. lasted until the end of the 20th Century. By then, laparoscopic surgery for hernias was a very safe and common out-patient procedure rendering such mechanical appliances obsolete in many cases. Ed.



Philatelic Society of Lancaster County
PO Box 6053
Lancaster, PA 17607-6053

This document was created with Win2PDF available at <http://www.win2pdf.com>.
The unregistered version of Win2PDF is for evaluation or non-commercial use only.
This page will not be added after purchasing Win2PDF.