

Philatelic Society of Lancaster County



The James Buchanan Chapter (#173) of the American Philatelic Society
Chapter 118 of the American Topical Assn.

Meeting Begins at 7:00, Wednesday, 10 July 2013

Bluebird Commons / Woodcrest Villa. Jim Ziogas: Host
Doors Open at 6:30. Come Early to Buy, Sell, and/or Trade

Volume 76, No. 7

July, 2013

Highlights

- eBay Sales
- Gunboat Philately
- PSLC Writers
- 14 August Picnic
- Free APS Membership
- Postcards & Stamps
- A CEO for APS?
- Museum Bus Trip
- A Maximum Card
- Postal Ephemera

From the Desk of the President

First of all, let me thank those who helped make our Open House such a success. I believe that everyone thoroughly enjoyed the entire setup, the casual nature of the displays, and the conversation.

My tales are rather simple this time, as I continue to try to clean up and clean out a lot of my material. eBay

seems to be the only direction to go with some of the last of the material. One interesting thing which I have discovered is a group of old stamp journals from the 30's. The information is amazing, and they are a fun read. They even have "stamp" cartoons in them.

Many thanks to Mike Bach and Roy Baardsen for all the

work they are doing to organize our club trip to the National Postal Museum in D.C. on 26 September. The meeting in July will probably be your last chance to sign up for this very inexpensive trip. If it is like any of Roy's other extravaganzas, the trip itself will be worth the price. **Bob** ☐

Gunboat Philately-A Presentation by Al Schaub

Tonight's illustrated program by Al Schaub will look into a small piece of U.S. naval history over seventy-five to a hundred years ago—the American gunboat in China.

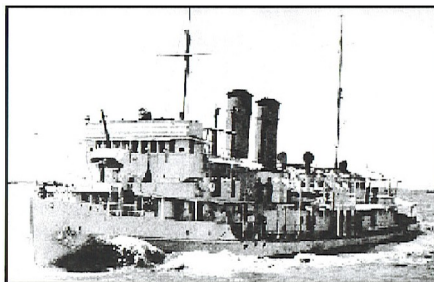
These are highly armed and shallow draft vessels used to patrol inland waters. Most major worldwide navies had them, and the U.S. stationed them in China from the very early 1900s into WWII. Their purpose was to protect American business interests and missionaries.

The Panay Incident occurred in 1937, and many saw this

as the unofficial first shot of WWII in the Pacific. The gunboat *U.S.S. Panay* was sunk while at anchor on the Yangtze River by Japanese aircraft. Al will discuss the interesting diplomatic and political implications of this and subsequent events.

Postcard at right is of the USS Oahu (PR 6), a naval gunboat that was scuttled in Manila Bay on 6 May 1942 and later salvaged by the Japanese maritime.

Collectors seek covers by cachet, ship cancel, and/or ports of call. Al Schaub will fill us with a wealth of philatelic and Naval history associated with these naval vessels accompanied by numerous illustrations of these and postal history.



VISITORS ARE ALWAYS WELCOME

PSLC Meets the 2nd Wednesday of the month (except August) at The Bluebird Commons in Woodcrest Villa, 2001 Harrisburg Ave, Lancaster, PA 17601 at 7:00 PM. Dues are \$10.00. For club info, call Lucy Eyster: 717.735-2586

Website: lcps-stamps.net

President:
Robert D. Noble,
rdnoble@windstream.net

Vice President:
Len Kasper,
hotrodparts33@aol.com

Secretary:
Joy Bouchard,
jib672@yahoo.com

Treasurer:
Lou DiFelice,
loudfelice@gmail.com

Membership, Publicity, & ATA Rep
Lucy Eyster,
lucyeyster@yahoo.com

Newsletter Editor, Programs, & APS Rep
Paul Petersen, 717.299.5640
pcpetersen@comcast.net

Upcoming Events

- **National Postal Museum Trip:** Tonight is the last time to sign up for this 26 Sept. event.
- **Free APS Membership:** A drawing will be held in September for a free year's membership in APS. This drawing is for non-APS members or those who have not been members for 5 years. The winner must agree to remain in APS for another year at his or her own expense.
- **14 August Picnic:** Sign-up will take place tonight. Salads, sides, and deserts are needed.



Postcards

Carol Petersen

For the last year and a half I have had great fun sending and receiving postcards from around the world through the Postcrossing Project (www.postcrossing.com). I know the editor has written about Postcrossing for this newsletter, but I wanted to share a few items that might be of note to stamp collectors.

Of course each postcard comes with at least one stamp, but I have been surprised and encouraged at the number of senders who mention being stamp collectors and who use multiple and different stamps on their card.

The international rate for U.S. postage is the same whether we send a postcard or an envelope. So if one of my assigned Postcrossers mentions that they collect stamps, I will tuck the postcard in an envelope so that the stamps can be soaked off the envelope leaving the postcard intact. I have also been known to tuck a few extra stamps in the envelope as well. Imagine my surprise when a lovely young French man for whom I had done that asked for my address in order to send me a thank you. I was expecting a standard postcard with a simple "Thank You!" Instead, I received a mint vintage card of the 1900 Paris Exposition with the Eiffel Tower pictured prominently, and inside the envelope was a beautiful Paris souvenir sheet! That postcard stands on my dresser, a particular favorite card. (→)

I have amassed a shoebox full of postcards from 44 different countries. Not every single card is a "keeper," but many contain poignantly open-hearted, friendly, informative, transparent messages that I consider absolutely priceless, and it is great fun to connect with people halfway around the world with whom I share so many hobbies and interests in common.

Mini Business Meeting in July Reported by Joy Bouchard

Since the topic of the June meeting was an Open House with outside guests, VP Len Kasper limited the business meeting to a few items. Lucy Eyster provided the enhanced snacks and Sarah Mylin assisted with the serving.

Club members brought in stamp and philatelic materials to both display and sell. Many interesting stamp posters, album pages, and other items were posted on the walls as assisted by Len's grandsons.

Len welcomed the several visitors to the Open House and proceeded with the monthly drawing of three prizes.

Roy Baardsen reviewed the trip to the Nat'l Postal Museum in D.C. on Thursday, 26 September. There are now sufficient participants to fill the bus. The cost will be \$50 per person. Checks should be made out to the Reading Stamp Collectors Club, and all money is due by the 10 July meeting. There will be three pick-up times: 7:00am-Reading; 7:30am-Lancaster; and 8:00am-Shrewsbury. Right now these times are approximate, and they will be fine-tuned and provided along with the *en route* pick-up points as the event draws near. The bus will leave D.C.

(Union Station) at 6:00 pm sharp, and a dinner stop is scheduled about midway on the return trip.



The Some Sunday Stamp Show on 30 June (Farm & Home Center) and Scopex (at APS in Bellefonte on 15-16 June) were announced.

As part of the Open House, Al Schaub discussed the process of beginning a mini collection and passed around one of his own. It is a wonderful way to showcase a finite array of related stamps.

The next Treasury Report will be in the August *PSLC Newsletter*.

Dutch Maxi Card

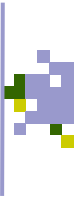
Carol P. received the card → to the right from a Dutch postcrosser. Maximum cards are issued by postal entities to announce a stamp. It typically contains an image of the stamp, the actual stamp with cancel on the day of issue, and some discussion about the stamp and event. This one commemorates the 450th Anniversary of The Council of State, an event in the long and complicated history of that nation. →



1900 Paris Worlds Fair

The card above ↑ is a replication of the 1981 Dutch stamp and the stamp itself is tied to the card by the 1 October Utrecht cancel. The stamp and card both show the maps of Holland in comparative views of 1531 and 1981. There are some differences in the geography, and what is most prominent are the changes in the northwest coast which underwent great land reclamation with the system of dykes and canals.

Maxi cards remain highly collectible. They are readily available and inexpensive to purchase. This stiff card differs from some U.S. versions, as it is postcard size with a backing that is ready to mail. One has the impression that the sender is a stamp collector with this example from his collection. It is franked with three 1987 semi postals supporting the Red Cross. That these old stamps are used and not demonetized by the euro is another topic.



Miscellaneous Club Notes: Programs/Hosts & Shows

2013 Programs and Hosts

12 June: Open House Display, Lucy Eyster & Len Kasper.

10 July: Gunboat Philately, Al Schaub. James Ziogas, Host

14 August: Club Picnic

11 September: Club Auction. John Brownell, Host

9 October: Topical Study: Stained Glass on Stamps. Dave Hunt. Dennis Shumaker, Host

13 November: One Page-Exhibits. All PSLC members are invited to participate with one or more exhibit pages. Bill Snyder, Host

11 December: 75th Anniversary Celebration-6 pm.

2014 Programs

8 January: Club Auction. Len Kasper, Host

12 February: APS Video: Canal Zone Gems. Clair Smith Host

12 March: The Westtown Locals. Bill Schultz.

9 April: 1.) The Patriot Postal Cards of the 1970-1980s. John Brownell. 2.) Lancopex advertising cards preparation.

14 May: Club Auction

11 June: TBA

9 July: U.S. International Stamp Expos: Stamps, Labels, covers, and ephemera. Paul Petersen.

13 August: Club Picnic

10 September: Club Auction

08 October: Great Britain Inland Airmail Service:1935-1937. Mike Bach.

2013 Local Shows

Some Sundays Stamp Bourse: Farm & Home Center. 18 Aug, 27 Oct, 1 Dec. Kevin Kellman (K²), Manager; 301-371-4558.

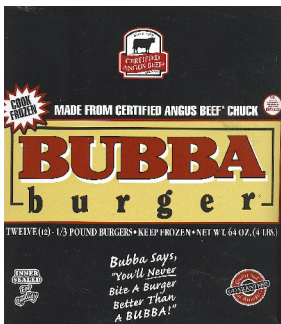
14 Aug. Picnic

Independence Day festivities allowed an opportunity to test a new burger, and this met with success. So mark the picnic date on your calendar. Plans are similar to last year

Date: Wed, 14 August 2013

Time: 6:00 pm to 9:00 pm

Where: Millersville Park (Directions will follow)



Sign-up: At July meeting. If you can't attend the meeting but wish to, please contact Paul Petersen to get on the roster. There will be a list to sign up to bring a salad, side dish, or dessert.

A CEO/Fundraiser for APS

Club member **Dick Osman** wrote a letter to the editor in the July ('13) issue of *The American Philatelist* (pg. 611-12) arguing against the Board of APS's unanimous vote to create and hire a CEO with the purpose to augment fund raising in this time of diminished membership and contribution. In both the *AP* and *Linn's* (and perhaps some other philatelic publications) the letters and advertisements have weighed heavily against the hiring of a CEO/Fundraiser. A companion letter by Tom Proulx in the same issue of *The AP* was also against the position.

Arguments against the plan for a CEO/Fundraiser included the high salary needed to attract such a fundraiser with a solid track record. It may also have an impact on the morale of staff who have already experienced personnel cuts and benefit reallocation. Finally, it has been pointed out that the hiring of a fundraiser has been tried and failed on at least two previous occasions.

To bring on a CEO/Fundraiser with a smooth transition, some of the APS bylaws needed revision. This was brought to the membership for a vote with the spring election ballot. The result of the membership vote was about 2:1 against the changes in the bylaws. One might call this a referendum against the hiring of a CEO/Fundraiser.

APS President Wade Saadi spoke about this at the breakfast meeting on day-five of the APS Summer Session (21 June, Sundman Hall) explaining that this decision is a board issue to decide, not a membership issue! While this was an informal session, someone shouted for a quick vote, and the only ones in support of a CEO were the board members in attendance.

Mr. Saadi left the impression that the board may continue to pursue hiring a CEO/Fundraiser by seeking some wiggle room within the bylaws. After much lively feedback from the audience, Wade did agree to take the room's sentiment to the board meeting later in June.

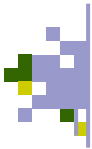
"In Print"

Dick Colberg wrote an article entitled "Collecting Postal History of the United States" for the June issue of the French journal *L'Echo de la Timbrologie* that is published by Yvert & Teller, a publisher that is roughly the French equivalent to the Scott Publishing Company in the U.S. Dick noted that for illustrations he was able to use his own material, some borrowed from others, and images from auction catalogs to provide a representative sample of the topic. Further, his exhibit "Postal Cards of Mexico" won a large silver medal in the French National Championship Stamp Exhibit in Amiens in May. Previous success with this exhibit at the regional level qualified him to enter the national competition.



In the 24 June 2013 *Linn's Stamp News* (Pg.3) **Paul Petersen** wrote a letter to the editor with two questions about the new \$1.10 Forever Int'l Airmail Stamp. His second question asked about the geography portrayed on the stamp. It showed the globe containing South America, Greenland, Africa, the Atlantic Ocean, and Europe. If one of the purposes of the postage stamp is to project a country's heritage, culture, values, and more, why was the U.S. left off of this international stamp?

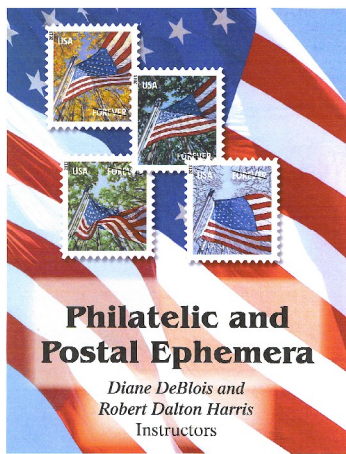
In the July issue of *The AP*, **Dick Osman** voiced his opinion about hiring a CEO/Fundraiser at APS. (See article to the left: A CEO/Fundraiser for APS) This is an issue that has been gaining attention among the APS membership.



Musings: July-2013

A few basics about ephemera and collecting

Many stamp hobbyists crossover in their collecting to include accumulation of materials often described as 'anything paper.' When the material is related to philately, it may include the following: Programs from stamp shows, show Cinderellas, menus from philatelic banquets, particularly attractive sales fliers, poster advertisements from the post office, stamp booklet covers, stamp bourse maps, dealer listings, exhibit palmares, old postal regulations and related government forms to name a few. You can see where I am going with this. The list is limitless.



As this material appeals to me, I was very fortunate to take the **Philatelic and Postal Ephemera Course** at the APS Summer Session in late June as taught by Diane DeBlois and Robert Dalton Harris, two postal

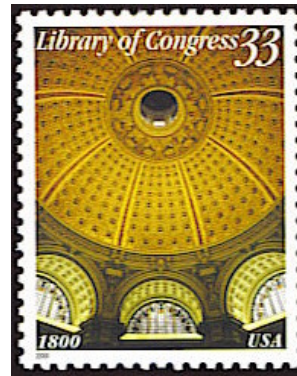
historians, writers, paper & book antiquarians, and ephemerists. Much of the information in this and future columns on ephemera are based on what I learned and read from this course.

My burgeoning knowledge base was broadened by a great book loaned to me by Bettina Heffner entitled: *The Encyclopedia of Ephemera: A Guide to the Fragmentary Documents of Everyday Life for the Collector, Curator, and Historian* (By Maurice Richards, 2000, Routledge Publishers, NY). This was also endorsed by the course instructors at APS as the one volume to own.

So what is ephemera? Its root meaning is *about the day* as translated from the Greek. While the cavalier description is that it is stuff we throw away, the Library of Congress (LOC) takes it more seriously. This material is collected, researched, cataloged, and archived. It is the untapped stuff of history. Many believe that its inclusion can only enhance a philatelic exhibit. APS has much of it in their holdings.

The LOC created an index of terms for graphic material. They see ephemera as transient everyday items, printed on paper, that are manufactured for a specific limited use, then often discarded. It includes everyday items that

are meant to be saved, at least for a while such as keepsakes and stock certificates. One could add the laundry ticket!



Included under the LOC general ephemera classification are 52 terms that allow relative separation of this material. A few examples include cards, forms, labels, leaflets, money, postage stamps, coupons, posters, paper toys, programs, puzzles, signs, tickets, stationary, and watch papers (These are very interesting, but perhaps more later.)

The 52 items under ephemera by the LOC are certainly not mutually exclusive. Take for example, a burgundy bookmark with a silver knotted cord from a 1992 Awards Banquet. Some were left on the tables after the event, while others went home. I kept one since someone I knew was the listed award recipient.

This item qualifies for •bookmark, •keepsake, •souvenir, •card, •memorabilia, and •rewards of merit. My wife would list it under "•scrap," and others might stretch it to the categories of •broadside and •announcement. Don't sweat what your items are called. The bottom line is-what kind of philatelic/or postal related ephemera can you use to add some zest to your tired collection or exhibit?

Personally, I was collecting ephemera from the 1939 NY World's Fair before seeking stamps, covers, and postcards. Put it all together, and the impact of my collection is greater than the sum of its parts.

Ephemera and philately are gaining ground as a team. An article in the philatelic press exemplifies this. *Gibbons Stamp Monthly* (June, 2013, Pg. 10) presented news of the British Thematic Association. They are expanding the range of material in their exhibits to include personal and family materials, postcards, and many other items that would be considered ephemera. Further, in their workshops and seminars on collecting and exhibiting, they are including featured speakers and displays to make it a reality. Ed. ☐



This document was created with Win2PDF available at <http://www.win2pdf.com>.
The unregistered version of Win2PDF is for evaluation or non-commercial use only.
This page will not be added after purchasing Win2PDF.