

Philatelic Society of Lancaster County



The James Buchanan Chapter (#173) of the
American Philatelic Society
Chapter 118 of the American Topical Assn.

Meeting Begins at 7:00, Wednesday, 8 October 2014

Bluebird Commons / Woodcrest Villa. Fred Sargent & Fred Mackey, Co-Hosts

Doors Open at 6:30-Come Early to Buy, Sell, and/or Trade

From the Desk of the President

Our September Auction exceeded all expectations, and the bidding activity was "Robust," to say the least! Many thanks to all the members who submitted auction items. I'm sure everyone is looking forward to the next auction in January.

Our By-laws Revision Committee met on Monday evening (9/15) at Lucy's, and we drafted the new update which included member input. Our main intention was to bring the club by-laws up-to-date, conducive to the present and future activities and continuance of our club. Bill Greiner will review the changes and updates with the membership at the 8 October meeting and draft copies will be available

in November in digital and paper format allowing a 30+ day review for a vote at the 14 January auction meeting.

The organizers of our 23 October bus trip to Manhattan report that there are still some seats left on the coach. If you still would like to participate and haven't yet committed, you can pay and commit at the 8 October meeting.

At our last meeting we had the first balloting for Vice President 2015/President 2016 nominations. Many nominations have been recorded, and if you haven't yet voted, a second ballot will be held at our October meeting. If you were unable to attend the September and will miss the October meet-

ing and still wish to vote, you may vote by absentee ballot by simply emailing me, Paul Petersen, or Joy Bouchard. The results of the balloting will be announced at the 12 November Meeting and Open House. The balloting process is not new to the club, as it was actually documented in the previously published by-laws. However, these were not actually followed in recent years. It is just another process to get us back on track with proper decorum as practiced regularly with similar clubs and organizations. Bill will fill in for me in October while my wife and I are in California. So I'll see you at the Open House in November. *Len*

Great Britain Inland Airmail: 1935-1937

Presented by Mike Bach

The British Postal Museum and Archive is celebrating the 80th Anniversary of the introduction of domestic (inland) air mail beginning in 1934. This linked seven large cities in England, Scotland, Wales, and Northern Ireland. It was an experimental service that lasted until WWII, and for a short while there was rocket Mail! But more lasting than the rockets were the George Vth blue pillar mailboxes which were used to both fa-

cilitate the logistics and market the airmail services.

Come and hear PSLC and Reading's own Mike Bach tell us this most interesting airmail history that included boats and trains as well as aeroplanes. As a great source of information on the topic, Mike will share many items from his collection for us to examine as he describes the onset of such a visionary precursor to modern airmail.



The expanse of England, Scotland, Wales, and Northern Ireland becomes smaller with the introduction of the UK's Inland Airmail Service in 1934.

Volume 77, No. 10

October, 2014

Highlights

- By-Laws
- British Inland Airmail
- Bio: Fred Mackey
- Spanish Civil War
- 1-Page Exhibits
- Reading Stamp Show
- Bus Trip
- Musings...Canal Zone

VISITORS ARE ALWAYS WELCOME

PSLC Meets the 2nd Wednesday of the month (except August) at The Bluebird Commons in Woodcrest Villa, 2001 Harrisburg Ave, Lancaster, PA 17601 at 7:00 PM. Dues are \$10.00. For club info, call Lucy Eyster: 717.735-2586

Website: lcps-stamps.net

President & Publicity:

Len Kasper, 717.723.1864
hotrodparts33@aol.com

Vice President:

Bill Greiner III,
sunfighter@verizon.net

Past President:

Robert D. Noble,
rdnoble@windstream.net

Secretary:

Joy Bouchard,
jib672@yahoo.com

Treasurer:

Lou DiFelice,
loudifelice@gmail.com

Membership & ATA

Representative :

Lucy Eyster,
lucyeyster@yahoo.com

Newsletter Editor, Pro-

grams, & APS Rep:

Paul Petersen, 717.299.5640
pcpetersen@comcast.net



Bio of the Month

Fred Mackey

Fred and his wife Caroline moved to Lancaster about eleven years ago after retiring from over forty years in the ministry. He started as a missionary in KY and was then called to the pastorate, serving in several states.

He started as a child with a stamp starter set for Christmas and never looked back. Fred had collecting spurts in his teen years and after he was married. Fred now collects U.S. singles and plate blocks. He also has a good holding of UN. But he is concerned with the proliferation of UN stamps and the recent demonetization of their issues which can no longer be used for postage from the UN Headquarters in NYC. For a while Fred thought that the stamp hobby was on the decline with the absence of stamp stores and more, but that was before joining PSLC!

Fred knew collector Paul Petersen from church, and then he met Fred Sargent in 2011 when he moved to Landis Homes. They now ride to the meetings together. When he joined PSLC he was amazed how active the hobby really is. The members are engaging, and the programs are interesting. But it is the club auctions that he loves. He even has Dutch Country Auctions on his speed dial!

Right now Fred is doing more selling than buying. He is helping friends and others to liquidate their collections, and this involves lots of staging of the material so that the best prices are realized. He is doing this through both PSLC and Dutch Country. He enjoys this philatelic activity, as he gets to play with stamps while helping other people.

While Fred has eased his personal buying of material for the present, he has been compiling country collections for two of his sons who are missionaries, one formerly in Russia and the other now serving in the Dominican Republic. Another son is a Christian counselor while the fourth son runs a Christian wilderness boys camp in the Adirondacks.

September Minutes and Treasury

Joy Bouchard and Lou DiFelice

Opening: President Len Kasper opened the meeting at 7:00 p.m.

Membership: Lucy Eyster introduced visitor Scott Van Horn who collects worldwide. Attendance tonight was 37.

Minutes/Treasury: The July minutes and treasurer's reports (August Newsletter) and the August treasurer's report (September Newsletter) were approved unanimously.

Drawing: Tonight's winners were Ron Hess and Truyde Greiner.

New Business:

Exhibit Frames: In his Treasurer's Report, Lou DiFelice led a discussion of the high cost of storing the exhibit frames, and he solicited ideas of ways to reduce this.

2015 Officers: Len led a dis-

ussion of the procedures for nominating a vice president for 2015. Bill Greiner passed these out to voting membership. Len will follow-up with the results of this process.

Old Business:

Club Trip: There are eight (8) spaces remaining on the bus for the 23 October trip to the ASDA show in Manhattan. The cost is \$65 per person. (See side bar below for additional information.)

Announcements:

Hospitalization: Roy Baardsen is in the hospital. (Cards were passed around for members to sign.) Mike Bach provided Roy's contact information for those who desire to wish him well.

1-Page Exhibits: Lucy has 8½ X 11" tag board sheets for 1-

Page Exhibits for November. Please contact her if you would like one. There is no charge for one of these items. (See information below for information on 1-Page Exhibits.)

By-laws meeting: This will be held at Lucy's at 7:00 p.m. on Monday, 15 September. All PSLC members are welcome, and club officers and board members are encouraged to attend.

Reading Stamp Show: This stamp show will be on Saturday, 1 November in Leesport. (See info below for additional information.)

Treasury Report

Opening: \$4,293.80 (1 Aug)

Income: \$0.00

Expenses: \$211.64

Closing: \$4,082.16 (31 Aug)

3-CDs valued at \$6,905.15

PSLC's Fall Philatelic Opportunities

One Page Exhibits-12 November 2014

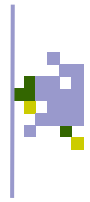
These were very successful last year. There were 13 exhibitors with 31 different exhibits comprising 40 pages and two 3D stamp items with accoutrements. Exhibits from last year are permissible, but new ones are preferred. These show the visitors some of our collecting interests. Anyone with questions regarding the preparation of these exhibits or other issues, contact Paul Petersen.

Club Bus Trip to NYC-23 October 2014

Come ride with us to the ASDA Show in Manhattan. Club members and guests are invited along. The stamp show is free, and shops around the Hilton on 6th Ave. abound. The first pick-up is in Lancaster at the Garden Café of Woodcrest Villa at 7:00 a.m. while the second pick-up is at Lowe's in Shillington is at 0730 a.m.. The bus will depart NYC at 6:00 p.m. with a no-host dinner stop at Crackerbarrel™ on I-78 on the way home. The cost is \$65 Contact Mike Bach at 610-207-5042 to sign up. You may pay at this month's meeting. Make checks to Reading Stamp Collector's Club.

Reading Stamp Show-1 November 2014

Saturday, 1 November from 10 a.m. to 4 p.m. Quality dealers and great food in a well-lit atmosphere, to be held at the Leesport Farmers Market. Look for sign on Rt. 61 just north of Leesport on the right (or east) side pointing to the market at the top of the hill. For GPS aficionados, the following address may help direct you: 312 Gernants Church Road, Leesport, PA 19533. Come and support our fellow stamp club. There will be ride-sharing to this event. Sign up to drive or to ride at the October meeting. Admission and parking to the show are free.



Collecting Spanish Civil War Pt-2 Symbolism in Republican vs. Nationalist Stamps

Last month's issue covered the onset of the 1936-1939 Spanish Civil War when the rebels or Nationalists sought to seize power from the elected or Republican government. The Nationalists were supported by Germany and Italy while the Republicans were backed by the Soviet Union. Socialist volunteers from around the world came to Spain to join the international brigades in support of the Republicans.

There were many hundreds of stamps and varieties that were issued by both sides of the war for propaganda, fundraising and philatelic purposes.

So how does a collector learn about these stamps? Here is where it gets complicated. Postal history can be complex, but differentiating the Republican from the Nationalist stamps is a good beginning.

References are available. One recent introduction to these stamps is in Christer Brunstöm's article, **Spain's Civil War Postal Tax Stamps** in the November, 2013 issue of *Gibbons Stamp Monthly* (pgs. 56-59). This and the internet sites discuss an ongoing catalogue compilation entitled *Catálogo de los Sellos Locales de la Guerra Civil Española 1936-1939*. There are three volumes (in Spanish) to date costing over \$100 each, and it is estimated that there will be up to ten or twelve volumes when the catalog is complete.

There is also a free online catalog: Catalogoselloscasandra.es/. This is said to have a good share of the Civil War issues among the other many Spanish stamps. This is a very difficult site to navigate.

So returning to the issue, how can one make a preliminary

distinction between the Republican and Nationalist stamps? A knowledge of the Spanish language, geography, and history helps. Many stamps have a city name, so knowing that Barcelona was a Republican stronghold, for example, would help to identify the stamp.

Republican Indicators: A key indicator is the word(s) "Antifascistas" or Antifeixiste." Symbols in these issues may include a clenched fist, red star, and a hammer & sickle. Terminology hints include "Social" and "Comite (committee)."

Red and black were the Anarchists colors who fought with the Republicans, and these colors grace some of the issues. Other Republican signs include one or more sets of initials representing varying groups and trade unions. The Republican side included a loose association of smaller interest groups. Examples include FAI, CNT, PSU, POUM, CFT, UST, ERC/EC and several others. There are Republican stamps in the French and Castilian languages. There were many common issues on the Republican side where the stamps were similar and only differed in the name of the town. (See Below ↓)



Nationalist Indicators: Religious symbols may be present on the Nationalistic stamps. Phrases such as "Viva España" or "Arriba" are common. There can be varieties of the Spanish flag with the red-yellow-red horizontal stripes, some with the coat of arms..

Some Nationalist stamps contain overprints. As the war progressed and the Nationalists gained more territory, they would overprint a Spanish stamp with some indicator of victory, and this may include name of the newly won city. ↓



Ed'l Programs & Stamp Shows

2014 Programs

8 October: Great Britain Inland Airmail Service: 1935-1937. Mike Bach, Fred Sargent and Fred Mackey, Hosts

12 November: Open House, One-Page Exhibits, and Your Best Stuff Extravaganza. Len Kasper. Bob Paire, Host

10 December: Dinner

2015 Programs

14 January: PSLC Winter Auction. Bill Greiner, Host

11 February: APS Video-*The doctoring of postage stamps: Philatelists beware.* GS Joseph

11 March: 1.) Local Stamps of Rattlesnake Island, Bill Schultz. 2.) Lancopex Advert Card Prep. All hands

8 April: A survey of Confederate Postal History. Patricia Kaufmann

13 May: The U.S. International Shows: Stamps, Covers, Labels, and History. Paul Petersen

10 June: PSLC Spring Auction

8 July: Express Companies of Mexico between 1855-1907. Dick Colberg

12 August: Summer Picnic

9 September: PSLC Fall Auction

14 October: Great Britain's Line Engraved Stamps. David Hunt

11 November: Club Member 1-Page Exhibits and Open House. Len Kasper & Paul Petersen

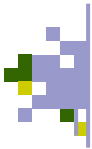
9 December: Dinner

2014 Related Shows

Some Sundays Stamp Bourse: (N) 7 December, Farm & Home Center, Lancaster. (Last in '14) Kevin Kellman (K²), Manager, 301-371-4558. (2015 schedule should be available shortly.)

Reading: (S) 1 Nov., Leesport Farmer's Market, Rt. 61. 10AM-4PM. See info on Page-2. A carpool may be available for this event.

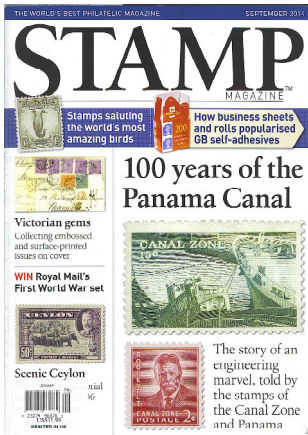




Musings: October-2014

The 100th Anniversary of the Panama Canal & More

A few years ago in this newsletter Dick Colberg encouraged PSLC members to write to the Citizen's Stamp Advisory Committee to produce a stamp for the 100th Anniversary of the Panama Canal (PC) in 2014. Many followed-up. But where is our U.S. stamp? We built the canal! But other countries are issuing stamps to honor this Centenary.



On an ironic note, the PC was just featured on an Egyptian stamp. They are celebrating a major overhaul of the Suez Canal and its 145th Anniversary. Unfortunately, the canal depicted on the stamp was not the Suez. It featured the Miraflores lock on the PC! This made the general and philatelic news. In fact there was an illustration of the Egyptian/Suez stamp with a matching snap of the PC lock on the front page of the 29 September *Linn's Stamp News*.

One of my favorite books is historian David McCullough's *The path between the seas* (1977), a history of the building of the Panama Canal. The historical background along with thematic collecting is what makes philately so much fun. In addition to the stamps there are post cards and other ephemera to seek.

While I may never be able to cruise through the Panama Canal, I can collect its stamps, the Canal Zone (CZ) issues (1909-1978) to form the basis of a collection. Mike Matusko got me started and recommended a White Ace™ album which is just what I needed. I use stock sheets for related material such as postal cards, covers, and others.

The French began the canal, but through a variety of misfortunes they had to abandon the project, greatly in debt. The U.S bought the rights in 1902, fomented the Panamanians to secede from Colombia, and the rest is history.

One stamp related to the canal is from Nicaragua, and it belongs in all Panama Canal collections.



To promote the canal for Nicaragua, that country offered the U.S great incentives causing our Senate to waffle. To point them back to Panama as the choice, a creative promoter visited all the stamps shops in DC for copies of Nicaragua 124 (1900), one for each U.S. senator. It pictured Mt. Momotombo, an active volcano that frightened them all back into the arms of Panama.

The Panama Canal is wide open for thematic collectors. Collecting the CZ itself is doable, though a few of the early issues can be pricey. These include the Colombian stamps overprinted with Panama and then Canal Zone (#12 below) followed by the "new" Republic of Panama stamps (44) overprinted with Canal Zone. Add in the inverts, and the costs rise steeply.



In 1924, U.S. Fourth Bureau issues of 1922 were overprinted with "Canal Zone." These were in use until 1928. (See CZ 96 below.)



In 1928 the CZ issued its own stamps, in use through 1978. (See C33 below.)



In 1978 U.S. President Jimmy Carter gave the Canal to Panama, and a 2008 Panama stamp was issued to celebrate the 30th Anniversary of this event (This stamp not shown.).

Beyond definitives and commemoratives, the CZ issued postage dues, officials, postal stationary, and postal cards.

There are several U.S. stamps depicting the Panama Canal along with those from other counties. It is a thematic collector's opportunity. Ed. 📧



This document was created with Win2PDF available at <http://www.win2pdf.com>.
The unregistered version of Win2PDF is for evaluation or non-commercial use only.
This page will not be added after purchasing Win2PDF.