

Philatelic Society of Lancaster County



An Affiliate of the American Philatelic Society: James Buchanan Chapter, # 173

2008 Banquet: Wednesday, 10th December 2008

Doors Open at 6:00; Buffet at 6:30 PM

BlueBird Commons/ Wood Crest Villa.

Message from the President

Eleanor Wheeler

Holidays are upon us. The end of the year as President of LCPS has arrived, and how quickly a year becomes but a memory. It has been a good year for me and our club. No one person can do all of the things required to build a strong club, and our club thrives because of the commitment and gracious help of so many members. And so-my sincere thanks to our Vice President, Bill Snyder, who has filled in for me and

takes control of the gavel for 2009. Lori Hostetler, I thank you for a job well done as Secretary. Thanks to Clair Smith, Treasurer, who even in a down market balanced the books. Of course, Paul Petersen, Editor, who has taken the club newsletter to new heights. Both Clair and Paul will continue in their respective positions for the coming year-thank you for that. And let's not forget that little dynamo, Marilyn

Shirley, for her monthly commitment to mail our newsletter. Welcome and congratulations to our new officers, John Ahlfeld, Vice President and our Secretary, Joy Bouchard. As for me, I shall devote my attention to collecting stamps and doing what I can to support our new officers and club.

Heav

Merry Christmas and Happy Hanukkah Celebrate the Holidays With PSLC: Banquet, Fellowship & Gift Exchange

2008 Banquet: 10 December at **6:30 pm** in the BlueBird Room. The doors will be open at 6:00 PM for earlier access. **Menu:** There will be a **hot buffet** with Chicken Cordon Bleu & Tenderloin Tips of Beef, along with a salad, vegetables, and a side dish. Coffee, tea, & water will be available. **Dessert** will be **pot-luck** by the club membership. We will be asking each of you to bring a small plate of cookies or something comparable. The club member's **cost** for the

meal is **\$6.00** a person and guests are always welcome. This will be payable at the door. If possible please have **five and one dollar bills** in hand. In case there are leftovers, WCV allows diners to take home what remains, so feel free to bring along a zip-loc bag. A **gift exchange** will be held for an item of a philatelic nature at a market value of not less than \$5.00. Some special recognition of club members will be made. There is no rush this evening. Club mem-

bers and guests are encouraged to enjoy the atmosphere and fellowship of one another's company.



Volume 71, Issue 12

December-2008

Inside this issue:

<i>From the President</i>	1
<i>2008 Banquet</i>	1
<i>Nov Club Minutes & Treasurers Report</i>	2
<i>'08 Hanukkah Stamp</i>	2
<i>Popular Topicals</i>	2
<i>Book Review</i>	2
<i>Miscellaneous Club Notes</i>	3
<i>Christmas Seals</i>	3
<i>2009 Dues are due</i>	3
<i>'08 Christmas Stamp</i>	3
<i>Musings from the Ed: Thank you, kind colleagues</i>	4

PSLC Meets the second Wednesday of the month (except August) at BlueBird Commons/ Wood Crest Villa at 7:00 PM

President:

Eleanor Wheeler

Vice President:

William P. Snyder

Secretary:

Lori Hostetler

Treasurer:

Clair Smith

Newsletter Editor:

Paul Petersen; 717.299.5640



20 Most Popular Topics was reported in the Nov-Dec 2008 issue of *Topical Time*. The data was compiled through the self-reported collecting areas as noted in ATA's 2008-10 *Membership Directory*. Related topics follow in parentheses as room allows.

- 1. **Animals:** Cats; Dogs; Horses; Elephants; Bears; Cattle
- 2. **Famous Men:** M. Luther; A. Lincoln; JFK; Jas. Cook; Columbus
- 3. (Tie) **Sports:** Olympics; Basketball; Soccer; Golf; Skiing; Hockey
- 3. (Tie) **Medical subjects:** Pharmacy; Nursing; Malaria; Red Cross
- 5. **Flowers/Plants:** Flowers; Grapes/Wine; Orchids; Tobacco
- 6. **Religion:** Christmas; Bible Subjects; Judaica; Churches; Madonnas
- 7. **Birds:** Penguins; Owls; Birds of Prey; Ducks; Hummingbirds; Puffin
- 8. (Tie) **Railroads:** Trains; Locos; Subways; Trams
- 8. (Tie) **Americana:** Statue of Liberty; Bicentennial; Presidents
- 10. **Ships:** Sailing vessels; Subs
- 11. **Fairy Tales/Mythology:** Disney; Folklore
- 12. **Fish/Marine Life:** Shells; Whales; Dolphins; Ocean Sea Life
- 13. **Space:** Shuttle; Apollo; Space Satellites
- 14. **Insects:** Butterflies; Bees; Ladybugs; Beetles; Dragonflies
- 15. **Earth's Physical Features:** Waterfalls; Mountains; Volcanoes
- 16. **Music/Musicians/Composers:** Instruments; Opera
- 17. **Fine Arts:** Artists; Stained Glass; Painters; Sculptors
- 18. **Literature:** Authors; Books, Libraries; Braille; Poets
- 19. **Military/War:** WWII; Civil War; WWI
- 20. **Aviation:** Airplanes; Zeppelins; Helicopters

Nov . Club Minutes-Lori Hostetler Treasury-Clair Smith

President Eleanor Wheeler called the meeting to order at 7:03 PM. Bill Snyder will present **tonight's presentation** on the *Stamps of Newfoundland*. There were no guests tonight. 35 club members were present.

The **drawing** was won by Jay Ginder. As he was not in attendance, the January drawing will be \$35.

MegaEvent: Roy Baardsen reported that the NYC bus trip was a great success, hearing nothing negative

from the participants. A trip next year? Maybe Union Station and the US Postal Museum in DC! A big thank you from the club to Roy for all his planning.

New Business: Lou discussed the Dec. 10th Holiday Party. The details are contained on Pg.-1 of this newsletter.

2009 Club Officers: Nominations and election were held with John Ahlfeld for vice president; Joy Bouchard for secretary, and Clair

Smith has accepted another term as treasurer.

Donation: The Club voted to make a donation of \$250 to Wood Crest Villa for making their conference room available for our meetings this year.

Respectfully Submitted, Lori

The Treasury-Clair Smith

Open bal- \$4,412.16
 Income- \$0.19
 Expenses- \$45.75
 Closing bal- \$4,366.60



2008 US Hanukkah Stamp

The US 42¢ Hanukkah stamp was unveiled in NYC on the 24th October. Hanukkah, also known as the Feast of Lights or the Feast of Dedication, celebrates the Israelite rebellion against the Greek assimilation/suppression of the nation of Israel. The temple was sacked and the special oil for the lamps destroyed. But the eternal flame burned miraculously for eight days while the appropriate oil was sought and prepared.

New Novel Centers in the Channel Islands

Will be of great interest to the postal historian and reader

Guernsey is one of the Channel Islands which lie off the coast of Brittany though they are associated with Great Britain. Early in WWII the islands were occupied by the Germans because of their strategic location. From 1941-1944 Guernsey and Jersey issued their first stamps - occupation stamps!

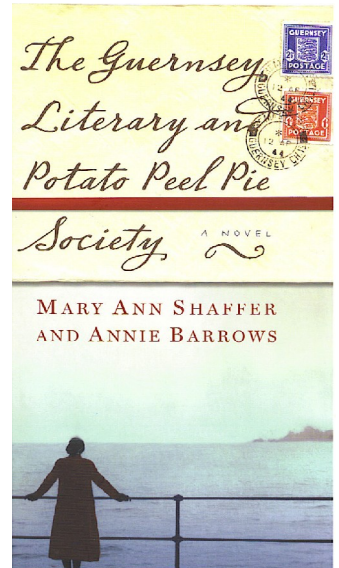
Set in 1946, the protagonist, Juliet Ashton, a former home front columnist, finds herself in the aftermath of a small community trying to recover from a grueling hardship.

In trying to make sense of the impact of the occupation, she learns much about character and stamina. And in seeking answers to her questions, she finds answers

to questions that she did not ask about herself.

This WWII home front saga has many positive attributes to attract the postal historian, reader, and author. It is written through letters among the participants back and forth across the channel, each with their distinct perspective. There is the bookshop, post office, an artist, a publisher, a journalist, the black market, informers, atrocities, the home front, a few random acts of kindness, and perhaps just a little romance.

The Guernsey Literary and Potato Peel Society by Mary Ann Shaffer & Annie Barrows (2008). NY: Dial Press. Ed □



Miscellaneous Club Notes: Election, Programs & Hosts, Shows

Election- 2009 Officers: Nominations and elections were held at the November meeting, and the following were elected:

Vice President-
John Ahlfeld

Secretary-
Joy Bouchard

Treasurer-
Clair Smith

2009 Programs & Hosts:

14th January: *Club Auction;* Bill Snyder, Host. A sign-up sheet will be cir-

culated at the January meeting for snacks & drinks for the 2009 club year. The list will be published in the February newsletter.

The **tentative schedule** for the remainder of the 2009 programs will be planned in late December by the Executive Committee and published in the January newsletter and augmented throughout the year as needed. Please see Eleanor Wheeler, Bill Snyder, or

Paul Petersen if you would like to present a program. Assistance is available to help you successfully accomplish this.

Upcoming show reminders: Jim Boyles' *Some 1st Sunday Stamp Shows*, Farm and Home Center: 07 Dec 2008, • 01 Mar 2009 • 07 Jun • 02 Aug • 04 Oct • 06 Dec (Dates are subject to change. (Please check *Linn's*.) 2009 shows in the local area will be forthcoming issues of the newsletter.

2008 US Christmas Stamp Unveiled in NYC

The 2008 US Christmas stamp was released at a first day ceremony on the 23rd of October during the ASDA's MegaEvent in Madison Square Garden. It is entitled *The Virgin and Child with the Young John The Baptist*. The painting is by Sandro Boticelli. It dates from around 1490 and it currently resides in the Cleveland Museum of Art in Ohio.

But look closely at the stamp and determine "What's wrong with this picture?" An enquiring mind will notice an anachronism depicted thereon, a minor blip of biblical history. Consider the individuals, the time line, and the story. The answer lies in the book of Luke, Chapter-1. Check this out yourself.



Christmas Seal Enthusiasts

Are you into Cinderellas, labels, and particularly Christmas Seals? www.christmasseals.com is a web site that displays many world seals & links



2009 Club Dues Notice

You can't find a better bargain at \$10.00/Year

✂..... Date: _____

Please clip this notice, complete it, and turn in with \$10 to Lucy Eyster at the December or January club meeting. You may also mail to LCPS, PO Box 982, Lancaster, PA 17608

Name: _____ Phone: _____

Email Address: _____

Please encourage your non-member stamp collector friends to join and enjoy the benefits of membership. Make this your New Year's resolution: "Every member get a member."



Musings from the editor

Thank you, kind colleagues

This first year as editor of the club newsletter has been a rewarding one. I thank you for your patience and long suffering as I jumped onto the learning curve. The use of the electronic media has had its challenges, and I have learned quite a lot in this area (with a long way to go!). As a club member since 2002, I have come to realize that the interpersonal relationships are as important to many club members as are stamps and postal history. Those collectors out there who enjoy their privacy and are not club members are missing something special.

With a people-oriented club, the newsletter is an appropriate vessel to encourage the fellowship. My wife and I have made lasting friendships from the club membership and are looking forward to meeting more of the new members.

Rising club president, Wm. P. Snyder was profiled in last month's newsletter, and I will be featuring the incoming officers in the 2009 January & February issues. Now is a good time to thank the current officers who will be stepping down at the end of 2008: Lori Hostetler as secretary and Eleanor Wheeler as president. And an additional note of thanks goes to Clair Smith who served as treasurer for the last two years and has agreed to serve for another term.

While I should have profiled the 2008 officers last January when I started as

editor, I was very green in the job and just learning how to push the **send button**. But as my old wrestling coach always told us, "It is better never than late."

Eleanor Wheeler has been vice president and president for 2007-2008 and secretary prior to this. She

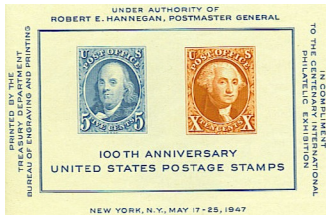


has three areas of collecting: Maps on stamps, Israel, and Europa. She began in 1999 and joined the club around that time on the advice of Kay Herr, the postal clerk at the annex who is a collector and operates the philatelic window. On top of this, Eleanor has the "obligatory US catalogue" and a worldwide album that she enjoys adding to from time to time. A big find was to obtain Israel-55 with tab for a bargain price. Eleanor's challenge is to organize her map stamps which "I will eventually do if I just decide to take the time to work on them." She now has some time to do this as she recently retired from a German manufactur-

ing firm where she was customer service manager in addition to some writing and editing at that firm.

When writing about Eleanor, one can't forget her husband, **Dick Wheeler**, who is also a collector with topicals in orchids, pandas, China, and US Duck stamps. Dick served as Newsletter Editor, and also retired recently. In retirement he sought the credentials and licensure to practice as a drug and alcohol abuse counselor.

Lori Hostetler became interested in stamps around 15 years ago as they seemed like miniature works of art. Coincidentally she was employed at **Tasco** where she did editing and proofreading with **Lucy Eyster**. After expressing her inter-



est in stamps, **Lucy** introduced her to the stamp club where she has been active ever since.

Lori started with souvenir sheets,

and built up a solid collection over time. A few years ago she began collecting booklet stamps. A fine addition to her collection was a booklet lot that she purchased from club member, **Dick Colburg**.

Her philatelic goal is to streamline what she now has and reinvest what she makes into her current interest.

Lori likes to be with the other club members at the meetings, especially when we have auctions and special programs. When time is available she will try to get to out of town stamp shows.

Anyone familiar with **Lancopex**, the club's annual stamp exposition each April at the Farm & Home Show will realize the dedication of both **Lori** and the **Wheeler**s. For as long as I can remember, they have been dedicated in setting up and taking down the show, and they have spent most of each day serving at the show at the hospitality table, the snack table, or in whatever task is needed of them. They serve as fine examples of participating club members and leaders.

My plan is to continue to offer club member profiles this spring featuring the past club presidents in reverse chronological order. Ed □



This document was created with Win2PDF available at <http://www.win2pdf.com>.
The unregistered version of Win2PDF is for evaluation or non-commercial use only.
This page will not be added after purchasing Win2PDF.