

Philatelic Society of Lancaster County



An Affiliate of the American Philatelic Society: James Buchanan Chapter, # 173

Club Meeting: Wednesday, 10th September 2008

Bourse opens at 6:30 PM and Meeting starts at 7:00 PM

BlueBird Commons/ Wood Crest Villa. Tonight's hosts: The Wheelers

**Volume 81, Issue 9
September-2008**

Message from the President

Eleanor Wheeler

Summertime is on its way out as evidenced by the leaves that are increasingly falling around our house, and knowing that the club's annual picnic is over.

The picnic was a great success according to Marilyn Shirley, who is still in awe of the contribution of a lot of shrimp. Thank you all who contributed and especially to Marilyn and Chuck Shirley for hosting

the annual picnic for many years. Marilyn has also volunteered to sign up with the Millersville Borough Office to use the borough park for our picnic next year, at no cost. Registration is in January. Of course if anyone has another suggestion, please mention it at the September meeting or contact me.

FYI- I recently noticed a philately col-

umn in the "Senior News" newspaper. The column in the August issue was about William Faulkner and showed the 22¢ stamp issued in his honor in 1987 (Scott # 2350), written by Ray E. Cartier, Executive Director of the American Topical Association.

See you all the 10th.

Heaw

Inside this issue:

<i>From the President</i>	1
<i>September Program</i>	
<i>Philately in NY as seen through its Journal: Stamp Insider</i>	2
<i>July Club Minutes & Treasurers Report New Book Review</i>	2
<i>Miscellaneous Club Notes</i>	3
<i>Still more on PVCs 23 October Club Trek to NYC Mega Event</i>	3
<i>The Latvian Map Stamp of 1918</i>	3
<i>Musings from the Ed Cinderellas, anyone?</i>	4

September Program-Club Auction

Yes club members, it is that time again, our fall stamp auction. Recall the editorial in January that encouraged a clean-out of your unused stamp stuff. A New Year's resolution it was to be. Well, it is here again, and the time is right. Take a while to go through your stuff. Make three (3) piles:

- Keep;
- Auction/sell;
- Donate.

If you have some holdings that you are not regularly viewing or working on because they no longer hold your interest, it is time to purge! What can be better than sharing your treasures with fellow club members. Boxes of doubles

may be treasures to others. And as has been said in this Newsletter, donations are always welcome including veterans, school kids, and others.

Auction Rules:

- ◆ There is a ten lot limit / person
- ◆ Minimum bid is \$1.00 or more
- ◆ Lots to be labeled as follows:
 - ◆ →Item description
 - Cat. or other value, if known
 - Minimum bid accepted
 - Auction Number-Your auction number will be assigned when you arrive.



APS Summer Session Auction on the 24th June 2008

PSLC Meets the second Wednesday of the month (except August) at BlueBird Commons/ Wood Crest Villa at 7:00 PM

President:

Eleanor Wheeler

Vice President:

William P. Snyder

Secretary:

Lori Hostetler

Treasurer:

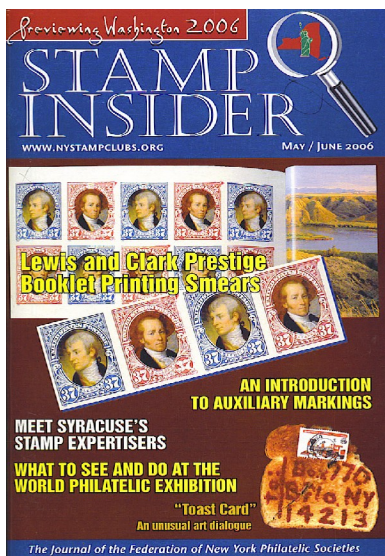
Claire Smith

Newsletter Editor:

Paul Petersen; 717.299.5640



Literature by the Pound at APRL



A variety of current and former philatelic journals are available for sale at the American Philatelic Research Library (APRL) at APS in Bellefonte. These are donations from APS members worldwide. These journals are sold at \$2/lb. For anyone interested in the philatelic literature, especially former and foreign editions, this is the place to go. Journals and magazines from as far back as the 1880s are sometimes available.

I picked up a few editions of '06 *Stamp Insider*. Issues are 64 pgs. in length and are in full color on semi gloss paper. Stunning is the best way to put it. This is the official pub of *The Federation of NY Philatelic Societies* which is comprised of over 25 clubs, mostly those above NYC. The Web site is www.nystampclubs.org, and it is well worth a look.

The website is most up to date and contains a pdf copy of the latest *Stamp Insider*. From this publication and web site, one is left with the impression that philately in NY is both vibrant and proactive. Ed □

July Club Minutes-Lori Hostetler Treasury-Clair Smith

Opening and Program:

Vice President William Snyder called the meeting to order at 7:04 PM. Tonight's presentation is "The History of the Picture Post Card" by Dick Pendergrast.

Membership:

There were 32 people in attendance including our guest speaker. Also were two new members, Bob Paire who collects Zips & Commemoratives and George Tucker.

Drawing:

Richard Bishop won the drawing tonight, but he was not in attendance, so the drawing next month will be a whopping \$25.

NY City Mega Event:

Roy Baardsen discussed the October 23rd NY bus trip to Madison Square Garden. The cost is \$45 a seat. Make checks payable to **The Reading Stamp Club**. We need at least 30 people. For further details about the trip, see the June newsletter. Deadline to sign up is August 13th at the picnic.

Tonight's Host:

Dianne Meek is host.

Club Picnic:

August meeting is a picnic at Marilyn Shirley's home. Sign-up sheet will be passed around. Put down how many will be attending and what you are bringing. This year it starts at 6 PM, 19 Circle Road, Millersville

Announcements:

Paul Petersen-The new exhibit frames from APS are in place in storage and will be available for 2009 Lan-copex.

Dick Sheaffer-Some exhibit frames need repair. This will be done next year when setting up the show.

James Boyles-The First Sunday Lancaster Stamp Show will be on August 03rd at the Farm and Home Center

After a short break, the program started at 7:30 PM.

The Treasury-Clair Smith

Open bal- \$5,013.65
Income- \$22.70
Expenses- \$622.43
Closing bal- \$4,413.92

100 Greatest American Stamps New Book by Janet Klug and Donald Sundman

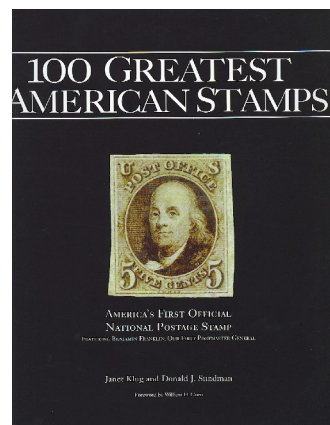
Janet Klug & Don Sundman's book, *100 Greatest American Stamps*, (2007) is an impressive work. They compiled a panel of experts to choose the top 100, and they then sought out the finest examples of each from collections all over. With each stamp they provide a history as to why the topic was chosen, how it was designed, the impact it had, printing and other technical data, and some related events including illustrations of other ephemera such as postcards, medals, paper currency, and more.

Most striking are the enlarged illustrations of the stamps. They are pristine, and the enlargements show details of the stamps that I

had never noticed. It was worth the time to read cover to cover.

Of most interest was the discussion of the 1861 5¢ Jefferson Davis (CSA#1). This stamp was ranked 54th. The South had many problems, especially in manufacturing. Printing postage stamps was one.

John Reagan was the Confederate PMG for the duration of the Civil War. There was little money for his Department with almost all of it going into the war effort. As a result, the PO had to be self-sustaining. Ironically, his was the only confederate government agency to make a profit. After the war he was offered a similar position with the USPOD, but he de-



clined. Living until 1905, he would surely be welcome in the current USPS given the critical budget challenges they face today. Ed □

Miscellaneous Club Notes: In the Lights, Programs, Hosts, Shows

In the lights: Lancaster and York's own Tom Howard was pictured in the August, 2008 edition of *The American Philatelist* on page 762. It shows him at his table during the Scopex stamp show at APS in Bellefonte in June.

Program and Snack Schedules for the remainder of the year:

10 September: Auction; Dick & Eleanor Wheeler-Hosts; **08 October:** Lan-

caster Postal History (James G. Boyles), Lou Leidig-Host; **12 November:** Newfoundland (WP Snyder), Dick Colberg-Host; **10 December:** Christmas Party (No host).

Upcoming show reminders: (See *Linn's* for addresses.) 21 Sep, 26 Oct & 16 Nov-Baltimore Friendly Bourse, Timonium • 05 Oct & 07 Dec-First Sunday Lancaster Stamp, Show-Farm and

Home Center • 12 Oct-CAPEX, Linglestown • 18 Oct-Gettypex Gettysburg • 1 Nov-Reading Stamp Show, Leesport • 9 Nov-Lehigh Valley Stamp & Coin, Allentown.



The Red Baron wearing his Blue Max

Is This the Final Word on PVCs?

Well, Maybe...

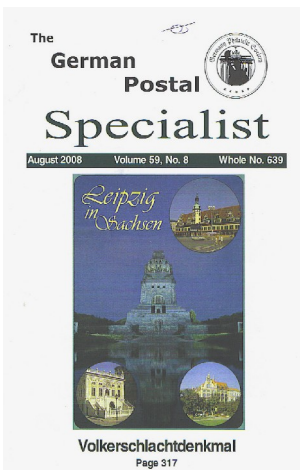
Everyone is interested in the topic of PVCs and their potential to damage or protect their stamps and covers. Which are the best products to buy for storage and protection of one's holdings?

In the August PSLC Newsletter there were some excellent opinions and other web references that were included in the July *German Postal Specialist* (GPS).

Now in the 08/08 GPS Len Cremona provides some additional references from previous editions of *The American Philatelist*.

12/04 (pg.1104) Hinging
04/05 (pg. 304) Mounting
04/05 (pg. 328) Plastic
in 02nd April 2001.

An older source that includes some internet sites is in *Scott Stamp monthly* in 02/04/08.



NYC's Mega Event

Bus is Secured; Some Seats Are Still Available



There are now a little over 30 paid participants, so the trip is going to happen. And for the good news, room is still available for a few more. There is time to sign up and send in your \$45 check. Please remit to Roy Baardsen, 379 Souix Ct., Sinking Spring, PA 19608. Call Roy with questions at 617.927.3435.

What: Stamp Mega Event

Where: Madison Sq. Garden

Date: Thursday, 23rd October

Leaving: Wal-Mart, Rts 322/222 in Ephrata. Meet at 6:45 am

Depart NYC: 5:00 pm

Snacks: Drinks/munchies will be available. Meals-on your own

The 1918 Latvian Map Stamps



The # 1 and 2 Latvian stamps were printed on the backs of German military maps that were discarded after the Great War in 1918. This was a time when Latvia was seeking independence. High quality paper was scarce, so the map backs fit the bill. 1.1 M stamps were printed on 4705 sheets comprised of 86 face different maps.

This stamp would fit into a collection of number 1s or maps on stamps (or better stamps on maps in this case!). How about WWI and/or other military history?

Undaunted a year later, 1919 Latvian independence issues (#s59-65) were printed on the backs of obsolete paper currency. Ed □





Musings from the editor

Cinderellas, Ephemera, Anyone?

Over the last few weeks I have been formulating this editorial on Cinderellas and ephemera from the perspective of a “non-purist” This material can only enhance the spirit of a collection and exhibit. They give the collector new material to seek and add to a collection. Thus supplemented, an exhibit is more interesting for the viewer.

So to my surprise, I found some of the exhibits at the 29-31 August Balpex to contain Cinderellas and other ephemera. I could not stay away, becoming lost in the frames. There was a conversation between an exhibitor and a judge about the purpose of the exhibit being “to tell a story.” How true! A philatelic story can be greatly be expanded with this material.

Many of the picture sides of post cards were included in the postal history exhibits, and I have not seen as much of this in the past. Certainly the availability of reasonably priced home scanners and color copiers have facilitated the ability to both display the “other” side of a post card and augment an exhibit.

There were items in the exhibits that would not have been there five years ago. Yet, all were appropriate to the exhibit and provided both depth and breadth of the topic covered.

Ephemera are items of short-lived interest or usefulness that later take on value

to collectors. This is the stuff in grand-dad’s cigar box: old medals and ribbons, movie ticket stubs, and ration cards, for example. In grandma’s trunk one might find a pressed flower, post cards and letters, a dance card, hair ribbons, and more. It is the stuff we love to go through and hate to throw away. Some of it may be of historical interest beyond the immediate family.

Cinderellas are a little trickier to define. Some state that anything not showing the prepayment of postage is a Cinderella, and others may add that these “garden weeds” do not belong in an album. In the “philatelic-related world” of Cinderellas there are postage dues, telegraph stamps, charity seals (ie. Christmas Seals), railroads, revenues, and forgeries, to name a few. Many of these are in the “back of the book.” Beyond these are exhibition stamps, poster stamps, and others.

Some of the hard core collectors feel that CTOs belong in the Cinderella category. Of interest is Dr. James Mackay’s comment that even the Penny Black and some later UK stamps were referred to as labels in their selvedge.

Half the fun of collecting Cinderellas is determining what is and what is

not a Cinderella. The topic can be argued with as much flair and opinion (though with much less emotion) as the current presidential campaign. Remember that in stamp collecting, there are few rules.

The **Cinderella Stamp Club** is UK based, and their journal is *The Cinderella Philatelist*. This organization’s up-to-date website is www.cinderellastampclub.org.uk. Items that the organization feels will never be included as philatelic based Cinderellas are trade labels, cigarette & telephone cards, and matchbox and cheese labels to name a few. And even here they temper this statement that some of them might qualify if there is a philatelic reason such as the presence of a stamp on the label.

The Cinderella Stamp Club web site is not that impressive except for the last section regarding links. These are worth checking out. A few links did not come up, not all were in English, but many of the available illustrations were great. One site worth visiting is www.alphabetilately.com/zeppscinds.html. If you like little pictures of Zeppelins, see this site.

Returning to Balpex, the following

are some of the non philatelic items included in the exhibits: A pressed rose, a bubble gum card, a military medal, photographs, a cigarette card, old maps, an old fashioned stereoptic card, a modern View-Master™ slide set (1960s), printed labels, post cards, newspaper articles, and much more. All of these pertained to the stories being told.



The above label on the left is a philatelic related charity seal from Trinidad . It was produced by the Red Cross Society to raise money for **The Appeal for Wounded Soldiers and Sailors Fund** at the start of the Great War in 1914.

How will the exhibits augmented with Cinderellas and ephemera be judged at Balpex? It might be worth checking into. I know that I enjoyed the exhibits as did those around me. There were many stories told through stamps, postal history and Cinderellas and ephemera. Is this a positive direction philately? For exhibiting in general? Ed □



This document was created with Win2PDF available at <http://www.win2pdf.com>.
The unregistered version of Win2PDF is for evaluation or non-commercial use only.
This page will not be added after purchasing Win2PDF.