

Philatelic Society of Lancaster County

An Affiliate of the American Philatelic Society: James Buchanan Chapter, # 173



Club Picnic: Wednesday, 13th August 2008

Club Picnic starts at 6:00 PM

Please note change in starting time which is an hour earlier.

August is Lancaster Stamp Dealer Month

See their profiles and specialties on pages 2 and 3

PVC and Philatelic Damage: A continued Saga

More commentary from the literature

The June Newsletter discussed the finding reported in the May issue of *The German Postal Specialist (GPS)* that the older stamp mounts and plastic holders caused damage to some earlier classic German stamps. The stabilizers in the PVC (poly vinyl chloride) interacted with certain inks and papers resulting in the deterioration of either or both the color and paper.

This article resulted in some discussion in the June meeting, and was followed up in letters to the editor and editorial comments in the July *GPS* including one from APS president, Nick Carter who wanted more information as to brands and products for a future presidential column in *The American Philatelist (AP)*.

Jim Graue, *GPS* editor, added that the newer devices use

materials that prevent damage such as yellowing, warping, diminished flexibility, and cracking for long term storage. How long is long? He asks. There is no answer to this. It is best to replace older mounts and other materials that display signs of aging as noted above.

In the same May *GPS* issue, Alan Warren contributed an insightful letter on the topic. (This continues on pg.2)

Lancaster Stamp Club Trip to NYC for The Stamp Mega Event

Thursday, the 23rd October 2008

Round trip transport-in good company- for only \$45.00: See Page-3 for details

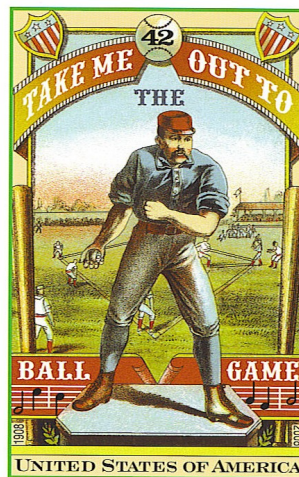
Summer Picnic with PSLC & Friends

An annual event is the club picnic which will be hosted at Marilyn and Chuck Shirley's home at 19 Circle Road in Millersville on Wednesday, the 13th August. They have hosted this soiree for years before many of us became members.

The club will purchase drinks, chicken, and fresh corn. As always, the Shirley family (and other club volunteers) will perform the culinary honors, that of barbecuing the chicken and roasting the corn. And again this year, Chuck will supervise to insure that all is done to his perfection.

This picnic is partially a pot-luck affair with members bringing the remainder of the fixins' such as salads, crunchies, salties, carbs, and desserts.

To insure just right amount of sides for this picnic, a sign-up sheet was sent around to the club membership at the July meeting. If you did not, by chance, get to sign up for something specific, please call Marilyn at 872-2479 and she can give you recommendations of what to bring. Spouses are invited as always. There is a large pool for a club swim; please bring your suit if you plan to swim.



Volume 71, Issue 8
August-2008

Inside this issue:

<i>PVC Damage and Philately</i>	1
<i>Club Picnic: 13th August</i>	1
<i>Club Dealers: Al Schaub, Jim Boyles, & Mike Matusko</i>	2-3
<i>Saal's Philatelic Picture Post Cards</i>	2
<i>Club Notes: Membership, Hosts</i>	3
<i>NYC Mega Event: Club Trek- 23 Oct</i>	3
<i>Musings from the Ed: Philatelic Recruitment</i>	4

PSLC Meets the second Wednesday of the month (except August) at BlueBird Commons/ Wood Crest Villa at 7:00 PM

President:

Eleanor Wheeler

Vice President:

William P. Snyder

Secretary:

Lori Hostetler

Treasurer:

Claire Smith

Newsletter Editor:

Paul Petersen; 717.299.5640



Al Schaub Dealer Profile

International Collectibles

The primary objective of *International Collectibles* is to be a generalist source of stamps, covers, and postcards which are priced in the low to mid-range of cost. Offered are tens of thousands of US, worldwide, and topical stamps and a vast array of covers and postcards: First Days, foreign, topical, military, air, etc. My areas of specialization include naval, military, and World War II collectibles.



In addition to doing shows, I very much welcome and encourage being given want lists of sought after items. With my inventory being too extensive for complete set-ups at Club Meetings, your want lists would assist me in knowing what to bring to Club Meetings. Also, club members are welcome to visit me to review items for possible purchase. To be stressed is that a purchase of any size is not obligated when private showings are done.

As a service to Club members I am pleased to serve as a consultant when one is in need of ideas in regard to starting a new collection. Needless to say, there is no charge for the opportunity to share in your fun.

Other than Club meetings, I can usually be reached by phone between four and six PM on weekdays. Don't hesitate to call me with questions or other issues at my home number: 717.560.6278. Al Schaub.



More on PVC and Stamp Collecting

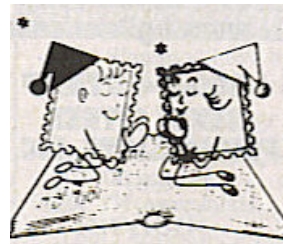
Continued from page 1

The new material is made differently-without the harmful materials (plasticizers). This newer PVC is seen as the safe vinyl. The current material, according to Warren are safe for short term storage.

Other materials used in stamp mounts and other protectors include polyethylene, polystyrene, and polypropylene. But the best, according to Warren, is polyethylene terephthalate or PET. This is sold by DuPont as Mylar® and Melinex®. This is one of the more popular materials for archival film used around the world by major libraries and museums for document storage.

Warren cites a web site with APS and the American Chemical Society's Committee for the Prevention and Care of Philatelic Materials. It discusses

a variety of substances used in philatelic storage and their effects on stamps and covers. Go to www.stamps.org/CARE/Pcpm.htm and go to page 18 for the coverage of various plastics and stamps. While at this site the reader will find a host of other important information on the care of stamps.



Further, Warren does not recommend cellophane and/or glassines for storage due to their detrimental effects on stamps over time. He cites a 1997 study published in the

paper *Conservation Restoration and Philatelic Chemistry* by V.J. Gupta.

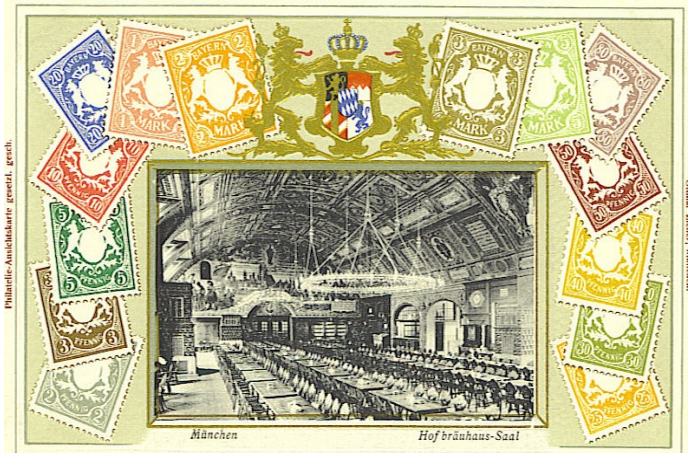
The final paragraph by Warren is worth quoting "We must remember that as collectors we do not own our philatelic items. We are temporary curators of these materials and must insure that they are safely kept under the best environmental and storage conditions. This protection is not only for the sake of the material itself, but also for future generations of owners (pg. 270)."

It seems, overall, that the best action to take from here is to use caution with your paper treasures. Eliminate or replace old mounts and warped cover pages. The same goes with old glassines which have turned brown or cracked. You want a suitable legacy to pass on. Ed □

The Lancaster Stamp Club family wishes to convey its deepest sympathies to Lori Hostetler on the recent loss of her husband, Dick.
Lamentations 3:25

Saal's Philatelic PCs Made a Hit A nice transition for stamp collectors

In follow-up to July's program on "The History of the Picture Postcard," the attached card is an appropriate transition from philatelist to dettiologist. Designed by a European named Saal, these cards depict embossed stamp sets from various countries around the world in the late 1800s to early 1900s. They are a joy to both look at and touch. This card depicts the Bavarian 2-80pf set of 1900 and 1-4 mark set of 1911. These post cards are readily found and are priced from \$8-15 depending on condition. Those with photos command more.



Miscellaneous Club Notes: Membership Report, Programs, Hosts

Membership: Lucy Eyster reports that attendance at the July meeting was 32 members plus guests. The total number of paid-up PSLC members as of the 18th July is 67 including one honorary member. Of this total number, 50 have email. There are also two junior members. Many thanks to Roy Baardsen from the Reading Stamp Club who joined PSLC and encouraged other members from

Reading to join us. Roy's activities only reinforce how important recruitment is to both the heart of philately and club membership. There are many organizations who have the following philosophy: "Every member recruit a new member."

After a short hiatus, both the **President's Report** and the **Secretary's Minutes** will resume in the September newsletter.

Program and Snack Schedules for the remainder of the year:

Please note the following dates/hosts for upcoming meetings. **10 September:** Auction; Dick & Eleanor Wheeler-Hosts; **08 October:** Lancaster Postal History (James G. Boyles), Lou Leidig-Host; **12 November:** Newfoundland (WP Snyder), Dick Colberg-Host; **10 December:** Christmas Party (No host).

James G. Boyles

Stamps & Supplies (Member of APS, FDCA, CSA)

An extensive stock is available of United States stamps and covers from Scott No.-1 along with Airmails, Revenues, Back of the Book, Stampless and First Day Covers, and Postal History. Plus much more!. There is also a good selection of general worldwide stamps and covers. Supplies are numerous and include Showgard™ mounts, glassines, hinges,

albums, supplements, catalogues, and all stamp supplies.

Visit our **First Day Sunday Stamp Shows** coming up at the Farm and Home Center on the 05th October and the 07th December.

James G. Boyles, Stamps & Supplies, PO Box 982, Lancaster, PA 17608-0982. Tel: 717.394.5118

2008 Olympics

Beijing, China



NYC's Mega Event- 23rd October

Preliminary Planning for the NYC Trek

Roy Baardsen continues to work on the club trek to the Fall NYC Mega Event, **Thursday, the 23rd October** at Madison Square Garden. Event is free. Bus seats will be available on a first come, first served basis. Non-collecting spouses and friends are welcome to attend.

We'll meet prior to 6:45 AM at the Wal-Mart Parking lot at 222/322, Ephrata. The bus will leave sharply

at 07:00. Stamp Show starts at 10:00. The bus will depart NYC at 5:00PM. No food or beverage will be available on the bus, but riders are free to bring their own victuals.

The charge will be \$45 per person, and this includes the driver's tip. As it stands on the 28th July, there are 26 participants including 5 Lancaster club members along with 3 spouses/friends. The bus co. needs a deposit for the reservation.

For those wishing to attend, please bring a check to the 13th August Club Picnic made out to the **Reading Stamp Collecting Club** for \$45. This is the deadline. If you will not be attending, you can also send your check straight away to Roy Baardsen at 379 Sioux Ct., Sinking Spring, PA 19608-8913. Roy said to feel free to call him with questions at 610-927-3435. The Mega Event is one not to be missed for this price.

Michael Matusko Stamps and Supplies 215-659-5669

Specialist in US Stamps/possessions and supplies. Stamps are available in both used and mint condition. (Covers are not available.) Possessions include the following:

Canal Zone

Palau

Guam

Marshall Islands

Micronesia

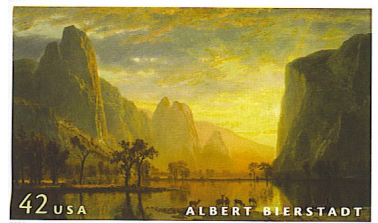
Philippines

Puerto Rico

Ryukyu

**Add Zest to your collecting...
Improve Your United States History...
Collect Possessions**

Supplies include tongs, hinges, a variety of brands, styles, and sizes of stamp mounts, stock pages and stock sheets, hinges, magnifiers, and many other philatelic needs. Current year album pages for Scotts, White Ace, and Harris are in stock. Special orders are welcome, but please allow at least two weeks for processing. **Call 215.659.5669.**



On 14th August at StampShow in Hartford, a painting by Albert Bierstadt will be released. It depicts the *Valley of the Yosemite*.



Musings...

There are some scary numbers out there

At Lancopex in April, I picked up a display issue of *The American Philatelists*, an older one from 10/2000. It contained an article of interest. Upon further perusal, I noticed the membership report which stood at 51,947 members. For comparison, I checked recent issues. By 03-08 the membership had dipped to 42,829 (a decline of 17.6%) and to 38,743 for 04/08 after a few thousand members were dropped from the roll due to death, resignation, or other non-payment of dues. This purge is done annually in APS.

If we assume a linear and conservative annual rate of decline in membership, say 2.25%, and project it in time, APS will have 30,857 members in ten (10) years and 21,935 members in 25 years or 2033 AD. I expect that actual membership numbers could be much less unless the trend is changed. Give credit to APS who is working on this issue. But they can not do it alone.

One way to shore up the hobby is to appeal to former collectors, those who collected into high school with the potential to resume sometime in mid-life. Many of us in PSLC fit into this category.

It is a grave mistake to assume that this approach will work forever. One can not return to collecting if one did not collect as a youth. And here is the challenge. "Youth" isn't collecting any more! Well, yes, a few are collecting, but not nearly like it was when we were kids. Half my friends had stamp albums.

In addition to the disturbing APS membership decline, there are also several local stamp clubs or specialized collecting entities that are folding monthly. We are fortunate here in Lancaster with a very active club, hard working members, and such strong leadership for so long.

But what can we do about this? First we must develop new collectors, both young and old. Second, we have to both sustain and grow club memberships, for PSLC, APS, and other collecting entities. Let's get out of our comfort zones. What specifically can we do?

1.) Continue with **displays and exhibits** in local post offices and libraries or any secure public display area which will have us.

2.) **Get the show on the road.** Our memberships have slide and PowerPoint shows that would be welcome to many groups. Throw in APS slide shows, and the availabilities are numerous. The work has already been done; all we need is the shoe leather.

3.) **Work with schools and home school groups.**

A few years ago a club member worked with a third grade class to compile an exhibit of the American Revolution as seen on US stamps. It won a medal at Lancopex.

While it has been a while since we home schooled our sons, this population is quite appropriate. There are organized support and activity groups with large number of well diversified children from preschool through high school. While they can use a computer for many of their learning entities, their daily activities are less reliant on text messaging and other electronic distractions seen so much today. They have enquiring minds, and their parents will be most supportive of philately as a learning activity. I would believe that philately is a natural match for homeschoolers. They have the time and interest to pursue this great hobby. Ed □



This document was created with Win2PDF available at <http://www.win2pdf.com>.
The unregistered version of Win2PDF is for evaluation or non-commercial use only.
This page will not be added after purchasing Win2PDF.