

Philatelic Society of Lancaster County



An Affiliate of the American Philatelic Society: James Buchanan Chapter No. 173

Club Meeting: Wednesday, 09th April at 7:00 PM

BlueBird Commons. Tonight's host is Al Schaub

Volume 81, Issue 4
April-2008

Message From the President

Eleanor Wheeler

Club Members:

LANCOPEX 2008

April 26th & 27th

I want to extend greetings to fellow club members and visitors. I was delighted to see so many at our last meeting and how quickly the "lick and stick" went. My thanks to everyone.

As you know, the annual Lancopex stamp exhibition and bourse is fast approaching. Folks, we all

need to consider how we may help get the show up and running. Jim Boyles is doing his usual wonderful job of organizing the dealers and exhibits. Your help is needed in setting up the tables and exhibit frames on Friday evening, April 25th through the close of the show on Sunday, April 27th at 4:00 PM. We also need greeters and people to sell snacks during show hours on Saturday and Sunday. Please, please call

Jim at 394-5118 and sign up for a couple of hours if you haven't already done so.

Our auction of items donated by Jim Lyman, at the March meeting, yielded \$309.50 for the club. Thanks to Jim and his generous donation and to all who bid and bought some treasures.

See you all at the next meeting on Wednesday, April 09th.

Eleanor

Inside this issue:

From the President- Eleanor Wheeler 1

April Program- FDR: Stamp Czar 1

LCPS Meeting Minutes-Dianne Meek Treasury Update 2

90th Anniversary: Inverted Jenny 2

Club notes, State Collections 3

FDR Month; Vacation Travel 3

Musings: Termonde, A Belgian Stamp Adventure 4

PSLC Meets the second Wednesday of the month at BlueBird Commons/Wood Crest Villa at 7:00 PM

President:

Eleanor Wheeler

Vice President:

William P. Snyder

Secretary:

Lori Hostetler

Treasurer:

Clair Smith

Newsletter Editor:

Paul Petersen; 717.299.5640

Wanted: Philatelic Journalists

Your Club Needs You

When he turned over the newsletter to me, former PSLC editor and chief, Dick Wheeler, warned it that it is tough at the top, always facing that blank screen while waiting for all the submissions to arrive over the waves or in the mail. Beside

the president, secretary, and treasurer, I have received some news from Al Schaub and Truys Greiner. But more is needed. So all of you potential Luft Award winners, let me hear from you. Philatelic news is always welcome, but

consider submitting your favorite philatelic web site. How does it advance your collecting? What is your favorite stamp and why? How did you get started in collecting? How are you sharing the hobby with others? Please let me know. Ed

Club Meeting Program for April-2008

Franklin D. Roosevelt-Stamp Czar

Tonight's PowerPoint will cover FDR's life as depicted through stamps, postal history, and related political issues.

Starting with a brief biographical review, the topics will address FDR as a collector, his input on US stamp design and production, his

relationship with APS, Hyde Park (NY), and the subsequent auction of his philatelic estate.

The presentation will be replete with numerous stamps, covers, post cards, and other ephemera and references regarding America's foremost Stamp collecting president.





You, the Readership



Does anyone know about these stock certificates issued by the APS years ago? This one is from August, 1892.



Minutes From the Secretary

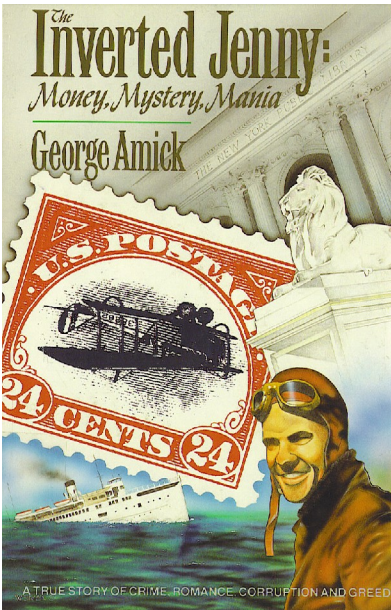
Dianne Meek-Acting Recording Secretary

Eleanor Wheeler called the meeting order at 7:05 PM and the sun is still shining... **Minutes and Announcements:** January minutes as appearing in the February newsletter were approved. Bob Noble introduced his neighbor and new member, Vern Martin. Eleanor read a letter from Tom Howard on his approval service and listed upcoming stamp shows (See Club Notes). **Lancopex:** Jim Boyles circulated a sign-up sheet for those wishing to contribute \$5 as a patron to be listed in the Lancopex program. He also passed around sign-up sheets for Lancopex volunteers with times, dates, and locations. In case you

missed them, they will be re-circulated in April prior to the event. **Old Business:** Ray Baardsen announced that with the temporal proximity of the Reading Stamp show to the Mega Event in Manhattan this fall, he will not be able to organize the annual multi-club trek. Eleanor expressed appreciation for the newsletter. If anyone is not getting the email or hard copy newsletter or has changed addresses, please inform Bob Noble. **New Business:** Paul Petersen followed up on development of a club wide literature database. No interest was expressed. Rather than shelving the idea completely, Roy Baardsen recommended that

members might use the newsletter to inform club members of what they need in the philatelic literature. Members thought this was a good idea. The business meeting was adjourned at 7:27 PM for snacks and preparation of postcard mailings announcing Lancopex. Eleanor reconvened the club to begin the auction of the James Layman Collection with all proceeds going to the club. **The Treasury:** Opening balance (01st January) \$3929.94; Income \$1781.25; Expenses \$1558.23; Closing Balance (29th February) \$4152.96. PS LC has 2 CDs for a total of \$4202.98 with Fulton Bank in Lancaster.

90th Anniversary of the Inverted Jenny Celebrate America's Most Famous Stamp



Amick, G. (1986). *The Inverted Jenny: Money, Mystery, and Mania*. Sidney, OH: Amos Press

The date of the May club meeting will mark the 90th anniversary of the discovery of the inverted Jenny. On the 14th May 1918, Wm. T. Robey purchased a sheet of 100 24¢ airmail stamps only to find the blue vignette inverted within the red frame in every stamp. He was a new stamp collector but on a fast and savvy learning curve. He had previously shared with others the possibility of an error given the double printing run to produce the stamp, one for the airplane and the other for the frame. After all, it was only 17 years earlier with the production of the 1901 Pan American issue when inversions were found in three of the six stamp set. He was going to get in the lottery.

To do my part, I requested a copy of Amick's book on the topic from the Am. Phil. Res. Library in Bellefonte. While it was a little pricy, the process was easy; I had the book in about 4 days. Robey immediately set out to market the stamps through newspapers, philatelic periodicals, and dealer contacts. Through the naiveté of a co worker, two postal inspectors were at his place of work within an hour of purchase, and they later interviewed his wife. Suspecting this, he did not return home until late, and they had already left. At his office they demanded the sheet of inverts. Robey informed them that they had better confiscate all the 1869 and Pan American inverts

and then come back for his. In fact, when he delivered the Jennies to Eugene Klein in Philadelphia a week later (for \$15,000), his father in law went with him with an empty briefcase as a decoy should the "G-men" try to snatch them away. Roby was just the beginning of the story. Klein fortunately numbered each stamp and immediately resold the sheet to Col. Ned Green, an eccentric NY millionaire collector. Green kept some blocks for himself and sold the rest using Klein as his agent. The narratives of the sales, thefts, and disasters are fascinating. But as troubling is the lack of internal consistency in the early days. Interviews contradicted published articles,

(Continued on page 3)

PSLC Club Notes

Parking, Lancopex, Membership, Shows & Letters

A quick note on parking at Woodcrest Villa. There are a good number of visitor spaces outside of BlueBird Commons, but this is not infinite. Should these spaces be filled when you arrive, you may park in the Employees Parking Lot. This is just across the street from the visitors lot. It is empty and open to PSLC club member's overflow. Please do not park in spaces designated with "Resident

Parking." **Lancopex update.** Jim Boyles reports that plans continue and that he will re-circulate the sign-up sheets at the April meeting for various tasks needed through out the weekend. This includes meeting and greeting; snack bar, door prizes; registration; children's table; set up, break down & clean-up; and various other tasks. This is the club's big event of the year, so let's go for it!

Membership: Vern Martin is the newest member. Born in Berlin, he has been a collector since he was ten when he sorted stamps for the Hawid Co. next door. **Shows:** DELPEX will be held 12 April in New Castle, DE. SCOPEX on 21-22 June. A **letter** from Tom Howard offered 40 free stamps with those who wish to participate in his approval service. A **Postcard** was received from Al Schaub's former shipmate, Joe Munci, asking if the PSLC newsletter is available in Spanish.

April is FDR Month

In the recent edition of *Stamp Magazine* of the UK was a short but interesting article related to FD Roosevelt, the subject of the April PSLC PowerPoint program. It concerned a gift from Josef Stalin to FDR at the time of the conference at the Yalta in 1944, a philatelic gift, specifically Scott # C68a, a surcharged and overprinted 10 kopek stamp of August, 1935. The article asked if this gift was Stalin's attempt to influence FDR in the post war settlement of Europe. At the conference, Stalin believed he should be given control of Eastern Europe for helping to win WWII. Churchill had been marginalized, so decisions and promises at Yalta were largely between Stalin

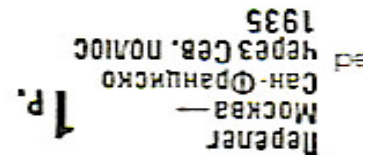
A Pennsylvania State Collection

The Philatelic way to Study State History

In her Refresher Course in a previous issue of *Linn's Stamp News*, Janet Klug wrote about the topic of state collections. She is from Ohio and identified many stamps from her state that are easily accessible at a reasonable cost. Compiled, these stamps tell the story of Ohio's history, people, and culture. How about a

Pennsylvania collection, a collection from one's native state or a relative's native country? There are stamps with the PA flag, state bird, state tree, and many others. There is Wm. Penn, Penn State University, and "Greetings from Pennsylvania." How many presidents are from PA? Name some PA authors, sports figures (IE

Jim Thorpe), explorers, and other famous Pennsylvanians on our US stamps, especially earlier ones when PA was central to the country's onset and subsequent history? And don't forget that USA/PA postal icon, Ben Franklin, American Minister to the French court during the war was a tireless collector of number 1s!



and an ailing Roosevelt. The stamp in question was one of a 10 issue set to commemorate the seven aviators who rescued the crew of the ice-breaker *Chelyuslin* and its scientific expedition. As the ship floundered and broke apart, the crew escaped to floating ice. For their bravery, all pilots were named Heroes of the Soviet Union. Depicted on the 10 kopek issue was S. A. Levanevsky, and this stamp was later overprinted to commemorate his upcoming polar flight from Moscow to San Francisco. Unfortunately Levanevsky and his crew were killed on their second attempt. The overprint varieties contain some errors, and one mistake is a full inversion. This latter stamp is considered a jewel of Soviet philately and was a choice gift to Roosevelt from Stalin at Yalta.

Inverted Jenny

Continued here

and diary entries differed from the evidence.

Amick narrates the stories of the sales and ownership of the Jennies into the 1980s. But even with this detail, for some stamps it is still hard to determine a provenance. In the early sales during the 20s-30s full records were not kept and some buyers wanted anonymity. But lacking this data, America's most famous stamp still reigns.

Travel Plans and Collecting

Or what about intriguing postmarks?



Are you planning a summer vacation, either domestic or international? If so, make it a philatelic journey. Check *Linn's* or *Scott's* for new listings, and mark your trek accordingly. If you are into postal history, why not look for exotic postmarks that may only be a short detour from your planned route. Travel always opens up possibilities, so enhance your collection as you go.

Don't Miss May's Club Meeting: Auction, Treasures?

FDR coming to Lancaster in April. Don't miss it.



Scott # 116



Scott # 117



Scott # 118



Scott # 119

Musings From The Editor

Termonde: A Belgian Stamp Adventure

When I returned to stamp collecting around 2000, it was Jeff Levan who shared his African colonials, pointing out the beauty of "real" engraved stamps. I was hooked, especially on the bi-colours, accumulating them when I could.

Subsequently, I obtained part of an engraved bi-colour Belgian set (116-121) of 1915-1920 commemorating atrocities inflicted on this country during WWI. These stamps were for my WWI accumulation. Immediately I recognized the Cloth Hall vignette in Ypres on the 35¢ stamp, a magnificent 16th century structure which was razed due to the shell fire in the fall of 1914. (The building was used for British artillery observation due to its height, and as such became a target for the Germans.) The remains of Cloth Hall became the allied symbol of resistance in that unoccupied sliver of Belgium. By 1966 Cloth Hall had been rebuilt to specifications. The 40¢ stamp (green and black) depicts the bridge at Dinant, site of a reprisal massacre of 664 Belgian civilians and children. During the initial invasion, the world class library at Louvain was looted, sacked, and destroyed; this is pictured on a beautiful scarlet and black 50¢ stamp (and is on many later issued stamps of Belgium). Printed in 1920 was the 65¢ claret and black stamp resembling the earlier series (Scott 139). The vignette contains the intact town hall at Termonde (also labeled Dendermonde in Flemish. Like Canada Belgium is bilingual).

Now here lies the problem. What happened at Termonde? Was the town hall destroyed? If so, why? I spent countless unsuccessful hours in my books tiring to find out the role, if any, of Termonde in the war. Then came my chance; it was the Western Front Association, a historical study group of the 1914-1918 war, its precursors, and aftermath. Our East Coast Branch meets in Baltimore a few times a year. There are also national seminars annually which alternate between the east and west coasts. When held within a day's drive, I try to attend. At the 2003 conference, a few speakers could not get to Quantico because of the hurricane that hit the east coast and disrupted transportation and other services. If I had my slides, I could have easily filled in. So for the 2005 conference to be held 09/05 in Newport News, I offered my slides as emergency fill in to the Program Committee. Then came hurricane Katrina and its aftermath to the Texas coast. The call came the night before I left. "Can you bring your



slide show,? The banquet/ keynote speaker is stuck in Texas as air flights were shut down or backed up for several days." I was planning to take my book for this author to autograph.

I am a recycler of books, CD, videos, bottles and paper, and even stamp club slide shows of WWI related stamps and postal history. My wife's advise was to fake the stamp part if I had to but not the war stuff, not with all those experts in the audience. This included historians, authors, professors, military experts, and a few other armatures like me. While a little intimidating to start, the dinner and presentation went well. Years of college teaching prepared me to work the room, and I answered some questions and asked others of the audience, including one about the 65¢ Termonde stamp. Did anyone know...? The last comment came from the journal editor who thanked me and then remarked that in all his years participating in the seminars, he had never experienced a question for which no one in the audience had an answer (referring to Termonde). It was time I let Termonde go.

Fast forward to a few weeks ago as I pursued "Linn's Philatelic Gems-2" by Donna O'Keefe. There was my stamp on page 22, except this was the inverted variety (139a) valued at over \$50K. But included was a brief history of what happened to the town. Yes, Termonde was in the war. Apparently the townspeople refused to pay the heavy fines imposed on them by the newly occupying Germans who then leveled the town by burning the buildings and houses. While it is a sad story, it showed that philately had an answer where modern historians were silent..

This document was created with Win2PDF available at <http://www.win2pdf.com>.
The unregistered version of Win2PDF is for evaluation or non-commercial use only.
This page will not be added after purchasing Win2PDF.